

Data Path : Z:\pestpcbsrv\HPCHEM1\FID_E\Data\FE011924AL\
 Data File : FE046299.D
 Signal(s) : FID1B.ch
 Acq On : 19 Jan 2024 09:39
 Operator : YP\AJ
 Sample : I.BLK
 Misc :
 ALS Vial : 1 Sample Multiplier: 1

Instrument :
 FID_E
 ClientSampleId :

Integration File: autoint1.e
 Quant Time: Jan 19 22:07:37 2024
 Quant Method : Z:\pestpcbsrv\HPCHEM1\FID_E\methods\Aliphatic EPH 122923.M
 Quant Title : GC Extractables
 QLast Update : Fri Dec 29 03:49:54 2023
 Response via : Initial Calibration
 Integrator: ChemStation

Volume Inj. : 1 ul
 Signal Phase : Rxi-1ms
 Signal Info : 20M x 0.18mm x 0.18um

Compound	R.T.	Response	Conc Units

System Monitoring Compounds			
Target Compounds			
16) T n-Octacosane (C28)	17.113	26231	0.183 ug/ml
17) T n-Tricontane (C30)	18.000	13721	0.092 ug/ml
18) T n-Dotriacontane (C32)	18.837	68177	0.456 ug/ml
19) T n-Tetratriacontane (C34)	19.628	55652	0.388 ug/ml
20) T n-Hexatriacontane (C36)	20.374	24808	0.170 ug/ml
21) T n-Octatriacontane (C38)	21.133	193783	1.314 ug/ml

(f)=RT Delta > 1/2 Window

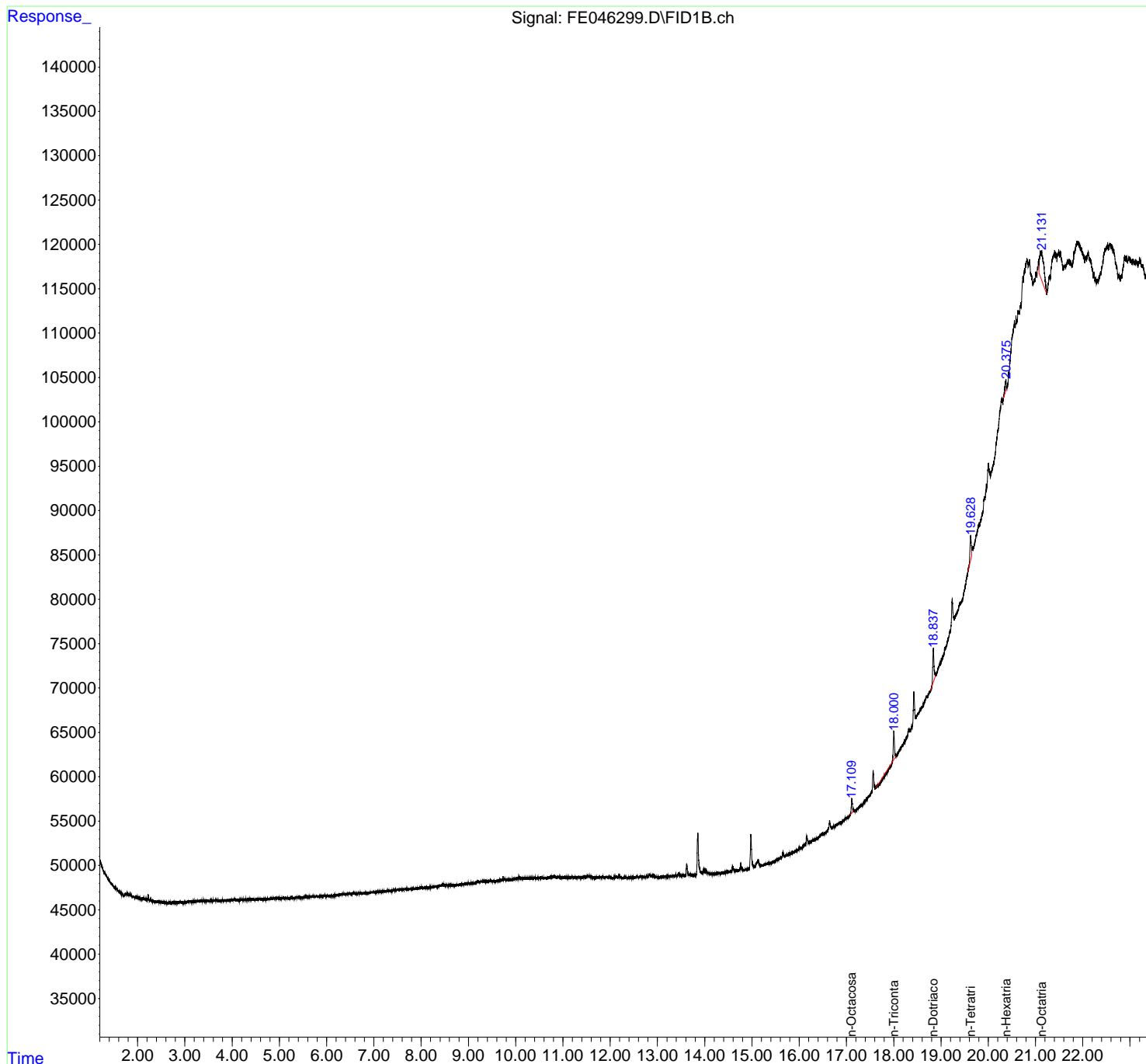
(m)=manual int.

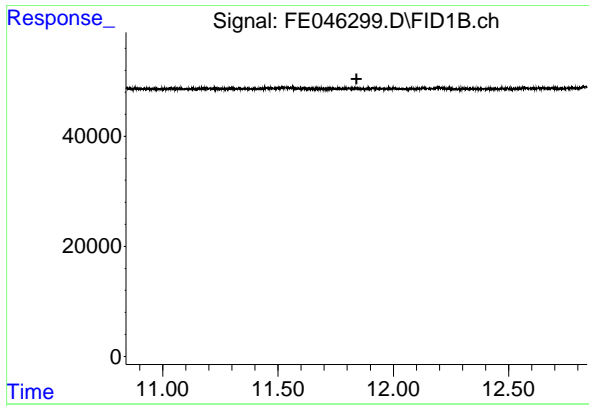
Data Path : Z:\pestpcbsrv\HPCHEM1\FID_E\Data\FE011924AL\
 Data File : FE046299.D
 Signal(s) : FID1B.ch
 Acq On : 19 Jan 2024 09:39
 Operator : YP\AJ
 Sample : I.BLK
 Misc :
 ALS Vial : 1 Sample Multiplier: 1

Instrument :
 FID_E
 ClientSampleId :

Integration File: autoint1.e
 Quant Time: Jan 19 22:07:37 2024
 Quant Method : Z:\pestpcbsrv\HPCHEM1\FID_E\methods\Aliphatic EPH 122923.M
 Quant Title : GC Extractables
 QLast Update : Fri Dec 29 03:49:54 2023
 Response via : Initial Calibration
 Integrator: ChemStation

Volume Inj. : 1 ul
 Signal Phase : Rxi-1ms
 Signal Info : 20M x 0.18mm x 0.18um

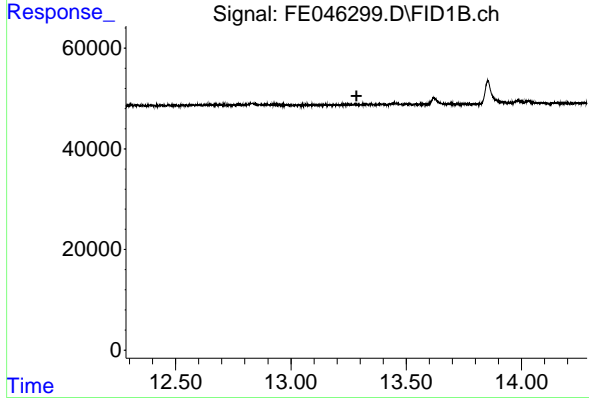




#9 ortho-Terphenyl (SURR)

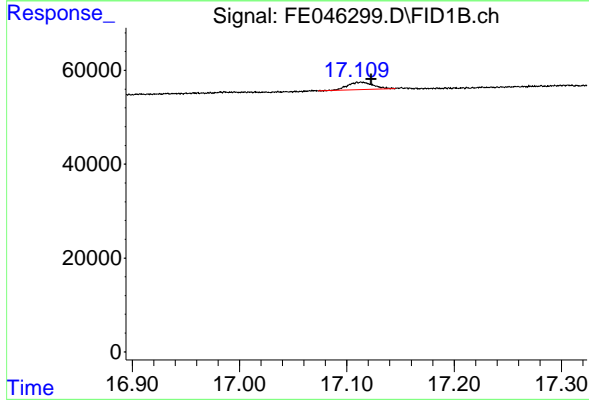
R.T.: 0.000 min
 Exp R.T.: 11.840 min
 Response: 0
 Conc: N.D.

Instrument : FID_E
 ClientSampleId :



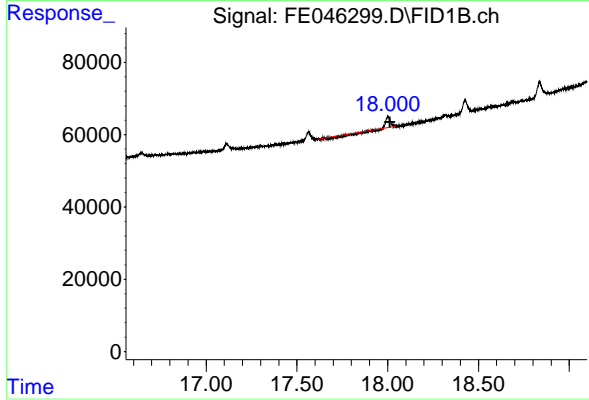
#12 1-chlorooctadecane (SURR)

R.T.: 0.000 min
 Exp R.T.: 13.284 min
 Response: 0
 Conc: N.D.



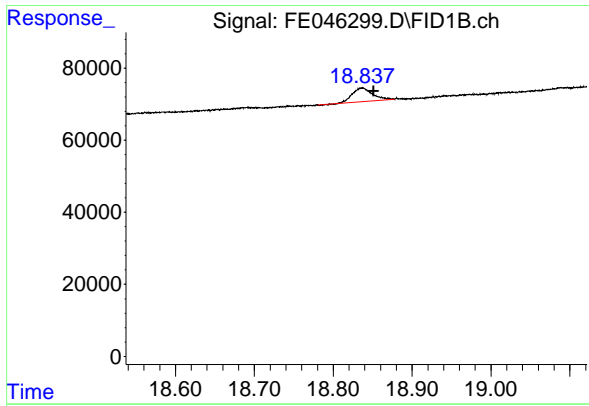
#16 n-Octacosane (C28)

R.T.: 17.113 min
 Delta R.T.: -0.009 min
 Response: 26231
 Conc: 0.18 ug/ml



#17 n-Tricontane (C30)

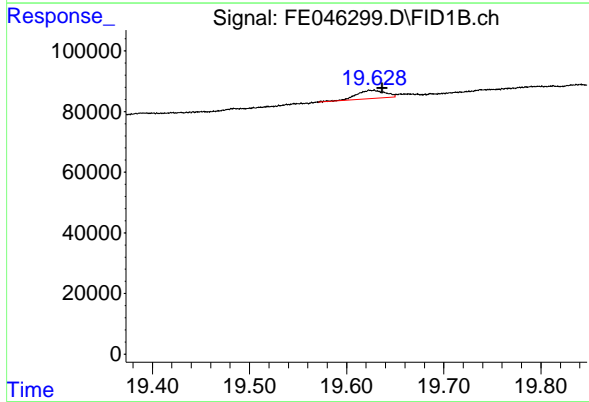
R.T.: 18.000 min
 Delta R.T.: -0.013 min
 Response: 13721
 Conc: 0.09 ug/ml



#18 n-Dotriacontane (C32)

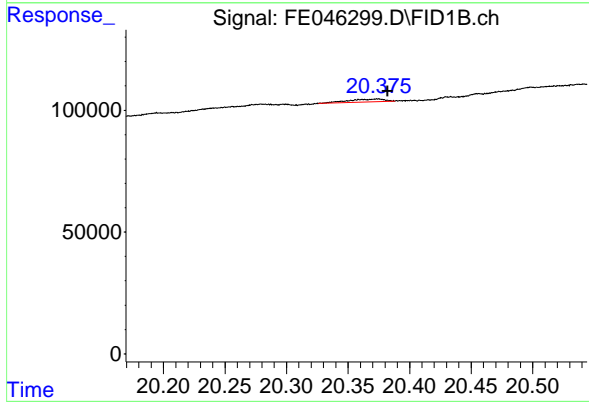
R.T.: 18.837 min
 Delta R.T.: -0.014 min
 Response: 68177
 Conc: 0.46 ug/ml

Instrument :
 FID_E
 ClientSampleId :



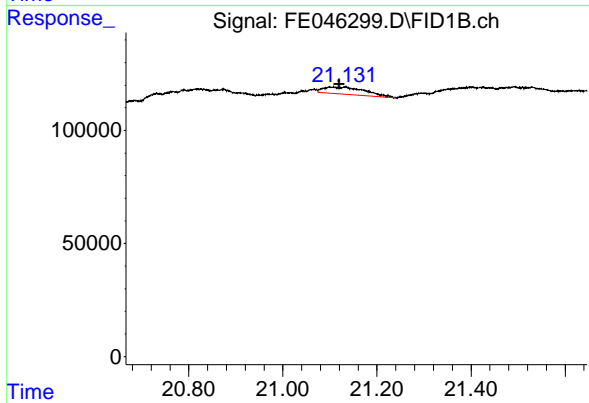
#19 n-Tetracontane (C34)

R.T.: 19.628 min
 Delta R.T.: -0.009 min
 Response: 55652
 Conc: 0.39 ug/ml



#20 n-Hexatriacontane (C36)

R.T.: 20.374 min
 Delta R.T.: -0.008 min
 Response: 24808
 Conc: 0.17 ug/ml



#21 n-Octatriacontane (C38)

R.T.: 21.133 min
 Delta R.T.: 0.013 min
 Response: 193783
 Conc: 1.31 ug/ml