

Data Path : Z:\pestpcbsrv\HPCHEM1\FID_E\Data\FE011924AL\
 Data File : FE046324.D
 Signal(s) : FID1B.ch
 Acq On : 19 Jan 2024 23:51
 Operator : YP\AJ
 Sample : P1182-01DL 5X
 Misc :
 ALS Vial : 32 Sample Multiplier: 1

Instrument :
 FID_E
ClientSampleId :
 OR-03-011824DL

Integration File: autoint1.e
 Quant Time: Jan 20 00:15:46 2024
 Quant Method : Z:\pestpcbsrv\HPCHEM1\FID_E\methods\Aliphatic EPH 122923.M
 Quant Title : GC Extractables
 QLast Update : Fri Dec 29 03:49:54 2023
 Response via : Initial Calibration
 Integrator: ChemStation

Volume Inj. : 1 ul
 Signal Phase : Rxi-1ms
 Signal Info : 20M x 0.18mm x 0.18um

Compound	R.T.	Response	Conc Units

System Monitoring Compounds			
9) S ortho-Terphenyl (SURR)	11.827	1107883	6.096 ug/ml
Spiked Amount	50.000	Recovery =	12.19%
12) S 1-chlorooctadecane (S...	13.270	1180380	8.834 ug/ml
Spiked Amount	50.000	Recovery =	17.67%

Target Compounds

(f)=RT Delta > 1/2 Window

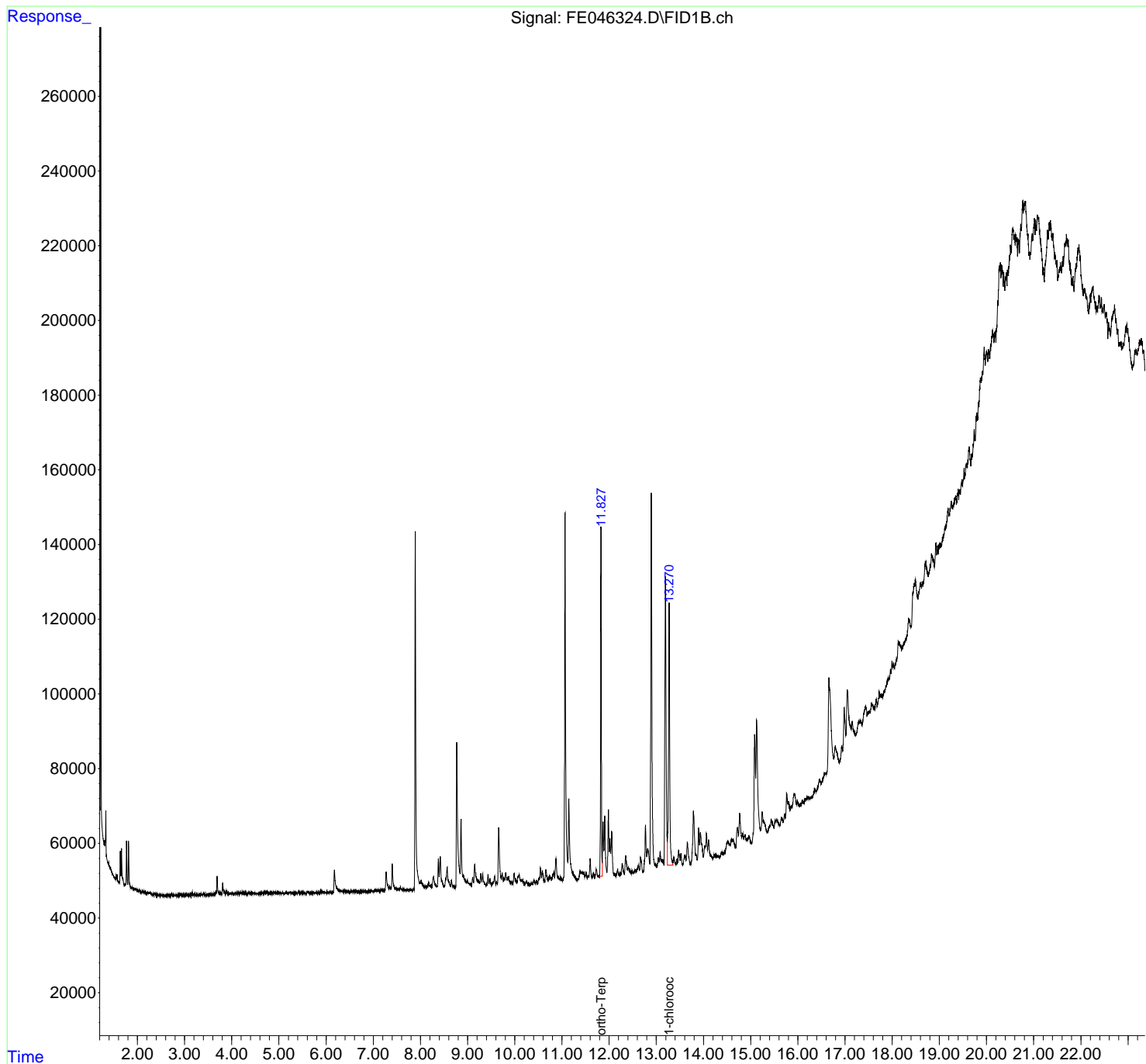
(m)=manual int.

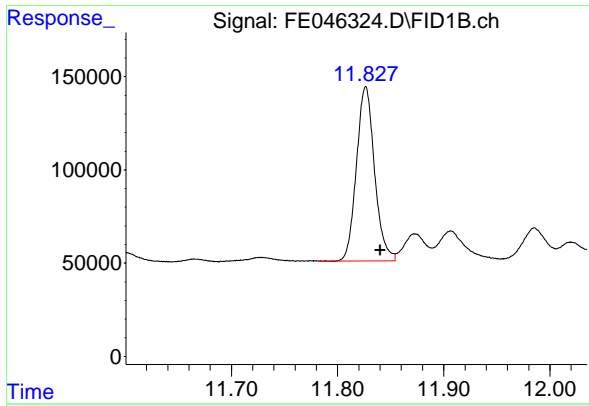
Data Path : Z:\pestpcbsrv\HPCHEM1\FID_E\Data\FE011924AL\
Data File : FE046324.D
Signal(s) : FID1B.ch
Acq On : 19 Jan 2024 23:51
Operator : YP\AJ
Sample : P1182-01DL 5X
Misc :
ALS Vial : 32 Sample Multiplier: 1

Instrument :
FID_E
ClientSampleId :
OR-03-011824DL

Integration File: autoint1.e
Quant Time: Jan 20 00:15:46 2024
Quant Method : Z:\pestpcbsrv\HPCHEM1\FID_E\methods\Aliphatic EPH 122923.M
Quant Title : GC Extractables
QLast Update : Fri Dec 29 03:49:54 2023
Response via : Initial Calibration
Integrator: ChemStation

Volume Inj. : 1 ul
Signal Phase : Rxi-1ms
Signal Info : 20M x 0.18mm x 0.18um

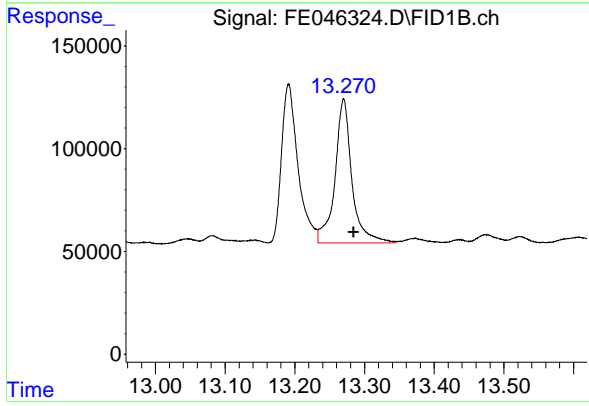




#9 ortho-Terphenyl (SURR)

R.T.: 11.827 min
Delta R.T.: -0.014 min
Response: 1107883
Conc: 6.10 ug/ml

Instrument :
FID_E
ClientSampleId :
OR-03-011824DL



#12 1-chlorooctadecane (SURR)

R.T.: 13.270 min
Delta R.T.: -0.014 min
Response: 1180380
Conc: 8.83 ug/ml