

Data Path : Z:\pestpcbsrv\HPCHEM1\FID_E\Data\FE012125AL\
 Data File : FE051983.D
 Signal(s) : FID1B.ch
 Acq On : 21 Jan 2025 10:19
 Operator : YP\AJ
 Sample : Q1134-03DL 5X
 Misc :
 ALS Vial : 12 Sample Multiplier: 1

Instrument :
 FID_E
ClientSampleId :
 EO-1-011725-E2DL

Manual Integrations
APPROVED

Reviewed By :Yogesh Patel 01/21/2025
 Supervised By :Ankita Jodhani 01/22/2025

Integration File: autoint1.e
 Quant Time: Jan 21 10:43:56 2025
 Quant Method : Z:\pestpcbsrv\HPCHEM1\FID_E\methods\Aliphatic EPH 011625.M
 Quant Title : GC Extractables
 QLast Update : Thu Jan 16 16:05:07 2025
 Response via : Initial Calibration
 Integrator: ChemStation

Volume Inj. : 1 ul
 Signal Phase : Rxi-1ms
 Signal Info : 20M x 0.18mm x 0.18um

Compound	R.T.	Response	Conc Units

System Monitoring Compounds			
9) S ortho-Terphenyl (SURR)	12.195	598209	4.185 ug/ml
Spiked Amount	50.000	Recovery =	8.37%
12) S 1-chlorooctadecane (S...	13.609	501769	4.374 ug/mlm
Spiked Amount	50.000	Recovery =	8.75%

Target Compounds

(f)=RT Delta > 1/2 Window

(m)=manual int.

Data Path : Z:\pestpcbsrv\HPCHEM1\FID_E\Data\FE012125AL\
 Data File : FE051983.D
 Signal(s) : FID1B.ch
 Acq On : 21 Jan 2025 10:19
 Operator : YP\AJ
 Sample : Q1134-03DL 5X
 Misc :
 ALS Vial : 12 Sample Multiplier: 1

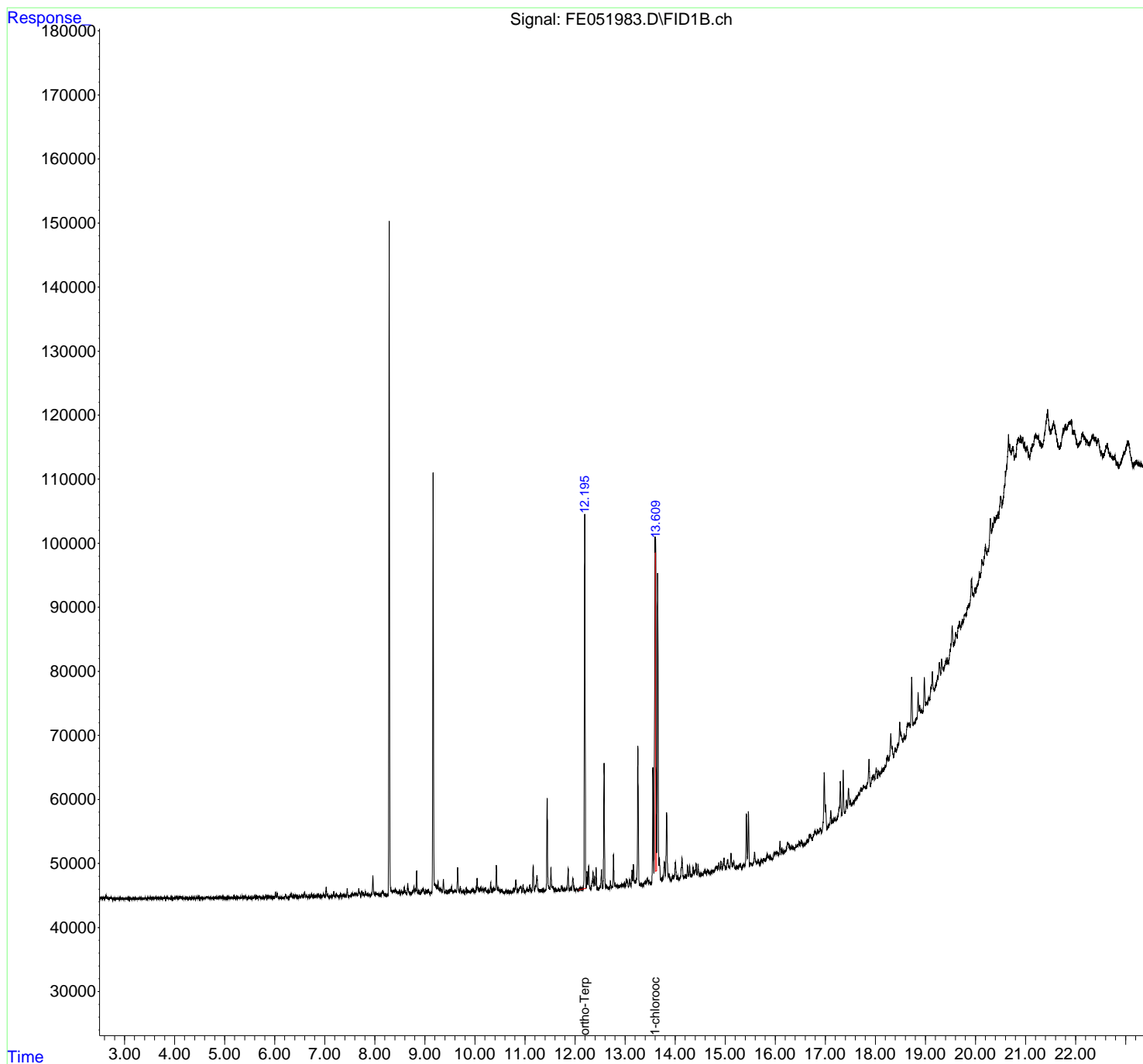
Instrument :
 FID_E
ClientSampleId :
 EO-1-011725-E2DL

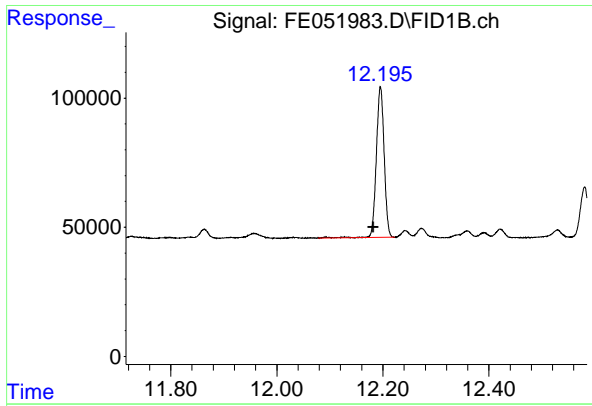
Manual Integrations
APPROVED

Reviewed By :Yogesh Patel 01/21/2025
 Supervised By :Ankita Jodhani 01/22/2025

Integration File: autoint1.e
 Quant Time: Jan 21 10:43:56 2025
 Quant Method : Z:\pestpcbsrv\HPCHEM1\FID_E\methods\Aliphatic EPH 011625.
 Quant Title : GC Extractables
 QLast Update : Thu Jan 16 16:05:07 2025
 Response via : Initial Calibration
 Integrator: ChemStation

Volume Inj. : 1 ul
 Signal Phase : Rxi-1ms
 Signal Info : 20M x 0.18mm x 0.18um





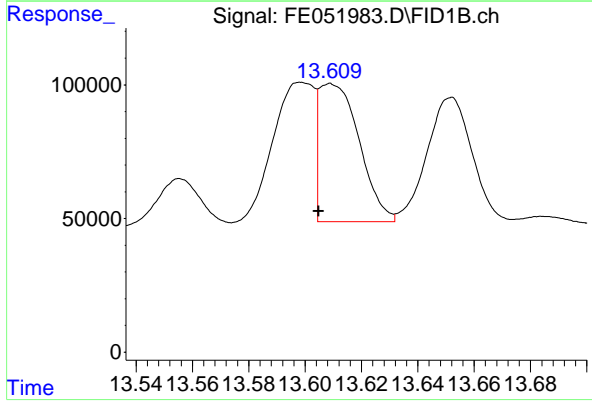
#9 ortho-Terphenyl (SURR)

R.T.: 12.195 min
 Delta R.T.: 0.013 min
 Response: 598209
 Conc: 4.19 ug/ml

Instrument : FID_E
 ClientSampleId : EO-1-011725-E2DL

Manual Integrations
 APPROVED

Reviewed By :Yogesh Patel 01/21/2025
 Supervised By :Ankita Jodhani 01/22/2025



#12 1-chlorooctadecane (SURR)

R.T.: 13.609 min
 Delta R.T.: 0.004 min
 Response: 501769
 Conc: 4.37 ug/ml m