

Data Path : Z:\pestpcbsrv\HPCHEM1\FID\_E\Data\FE012224AL\  
 Data File : FE046337.D  
 Signal(s) : FID1B.ch  
 Acq On : 22 Jan 2024 14:32  
 Operator : YP\AJ  
 Sample : PB158547BSD  
 Misc :  
 ALS Vial : 15 Sample Multiplier: 1

**Instrument :**  
 FID\_E  
**ClientSampleId :**  
 PB158547BSD

**Manual Integrations**  
**APPROVED**  
 Reviewed By :Ankita Jodhani 01/23/2024  
 Supervised By :Sohil Jodhani 01/23/2024

Integration File: autoint1.e  
 Quant Time: Jan 23 00:33:29 2024  
 Quant Method : Z:\pestpcbsrv\HPCHEM1\FID\_E\methods\Aliphatic EPH 122923.M  
 Quant Title : GC Extractables  
 QLast Update : Fri Dec 29 03:49:54 2023  
 Response via : Initial Calibration  
 Integrator: ChemStation

Volume Inj. : 1 ul  
 Signal Phase : Rxi-1ms  
 Signal Info : 20M x 0.18mm x 0.18um

Compound	R.T.	Response	Conc Units
<b>System Monitoring Compounds</b>			
9) S ortho-Terphenyl (SURR)	11.829	7907012	43.511 ug/ml
Spiked Amount	50.000	Recovery	= 87.02%
12) S 1-chlorooctadecane (S...	13.271	6414857	48.012 ug/ml
Spiked Amount	50.000	Recovery	= 96.02%
<b>Target Compounds</b>			
1) T n-Nonane (C9)	3.230	6680314	43.649 ug/ml
2) T n-Decane (C10)	4.473	7040611	45.366 ug/ml
3) T A~Naphthalene (C11.7)	6.170	8278134	49.776 ug/ml
4) T n-Dodecane (C12)	6.634	7522085	48.176 ug/ml
5) T A~2-methylnaphthalene...	7.265	8046915	50.542 ug/ml
6) T n-Tetradecane (C14)	8.460	7646023	49.085 ug/ml
7) T n-Hexadecane (C16)	10.069	7712130	48.701 ug/ml
8) T n-Octadecane (C18)	11.514	7820299	49.687 ug/ml
10) T n-Eicosane (C20)	12.826	7823639	51.717 ug/ml
11) T n-Heneicosane (C21)	13.438	7506730	51.048 ug/ml
13) T n-Docosane (C22)	14.025	7384812	50.522 ug/ml
14) T n-Tetracosane (C24)	15.130	16592331	114.404 ug/ml
15) T n-Hexacosane (C26)	16.155	6960401	48.549 ug/ml
16) T n-Octacosane (C28)	17.106	9297670	64.829 ug/mlm
17) T n-Tricontane (C30)	17.999	6744994	45.379 ug/ml
18) T n-Dotriacontane (C32)	18.834	7610693	50.887 ug/mlm
19) T n-Tetratriacontane (C34)	19.617	6580032	45.932 ug/ml
20) T n-Hexatriacontane (C36)	20.363	6579786	45.129 ug/mlm
21) T n-Octatriacontane (C38)	21.091	6764743	45.875 ug/ml
22) T n-Tetracontane (C40)	21.985	6647948	42.472 ug/mlm

(f)=RT Delta > 1/2 Window

(m)=manual int.

Data Path : Z:\pestpcbsrv\HPCHEM1\FID\_E\Data\FE012224AL\  
 Data File : FE046337.D  
 Signal(s) : FID1B.ch  
 Acq On : 22 Jan 2024 14:32  
 Operator : YP\AJ  
 Sample : PB158547BSD  
 Misc :  
 ALS Vial : 15 Sample Multiplier: 1

**Instrument :**

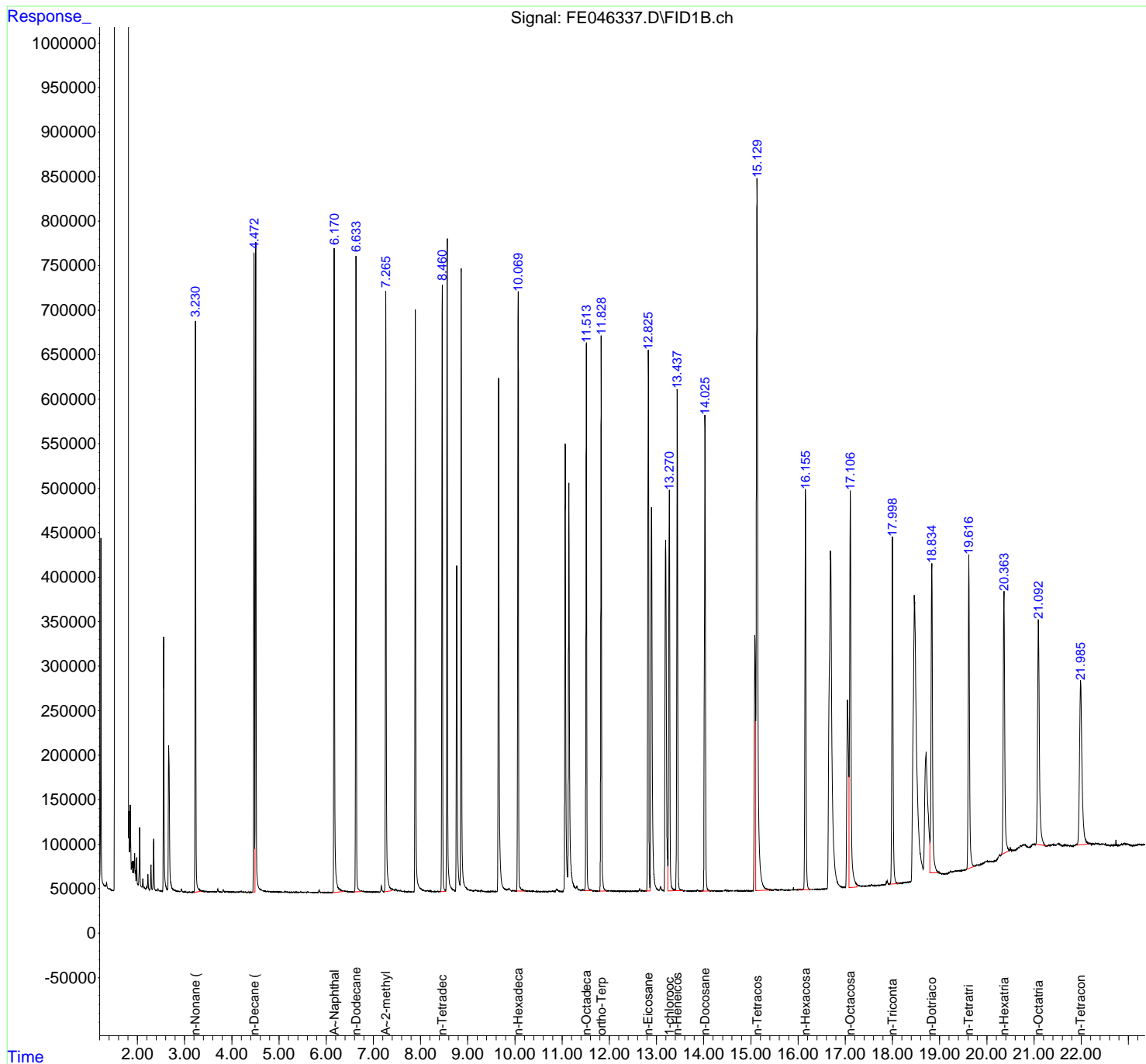
FID\_E  
 ClientSampleId :  
 PB158547BSD

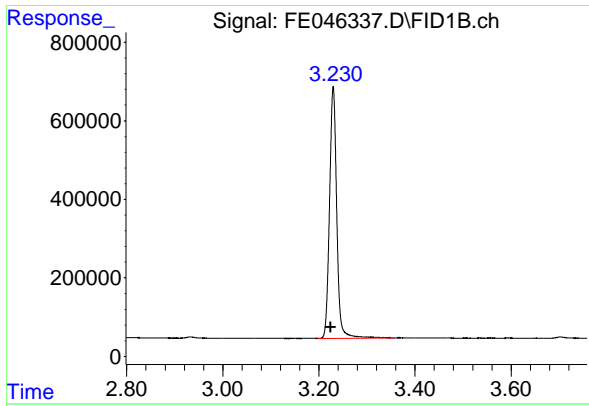
**Manual Integrations  
 APPROVED**

Reviewed By :Ankita Jodhani 01/23/2024  
 Supervised By :Sohil Jodhani 01/23/2024

Integration File: autoint1.e  
 Quant Time: Jan 23 00:33:29 2024  
 Quant Method : Z:\pestpcbsrv\HPCHEM1\FID\_E\methods\Aliphatic EPH 122923.  
 Quant Title : GC Extractables  
 QLast Update : Fri Dec 29 03:49:54 2023  
 Response via : Initial Calibration  
 Integrator: ChemStation

Volume Inj. : 1 ul  
 Signal Phase : Rxi-1ms  
 Signal Info : 20M x 0.18mm x 0.18um





#1 n-Nonane (C9)

R.T.: 3.230 min  
 Delta R.T.: 0.006 min  
 Response: 6680314  
 Conc: 43.65 ug/ml

Instrument :

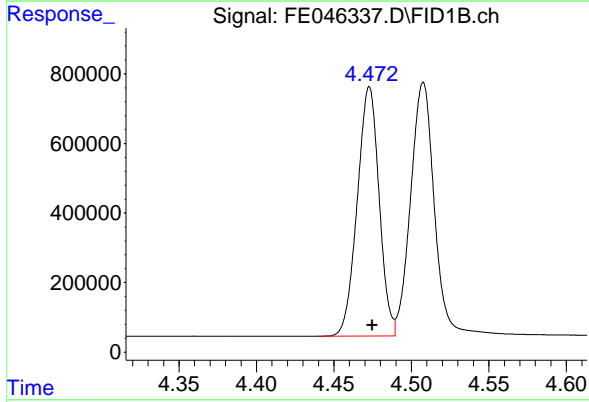
FID\_E

Client Sample Id :

PB158547BSD

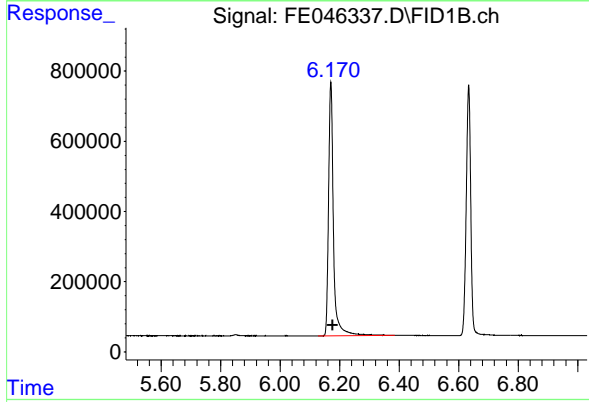
Manual Integrations  
**APPROVED**

Reviewed By :Ankita Jodhani 01/23/2024  
 Supervised By :Sohil Jodhani 01/23/2024



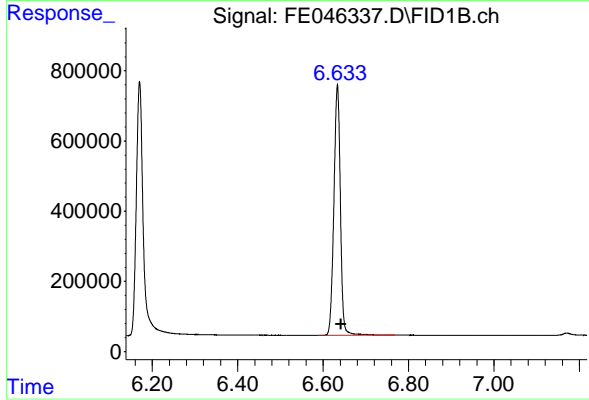
#2 n-Decane (C10)

R.T.: 4.473 min  
 Delta R.T.: -0.002 min  
 Response: 7040611  
 Conc: 45.37 ug/ml



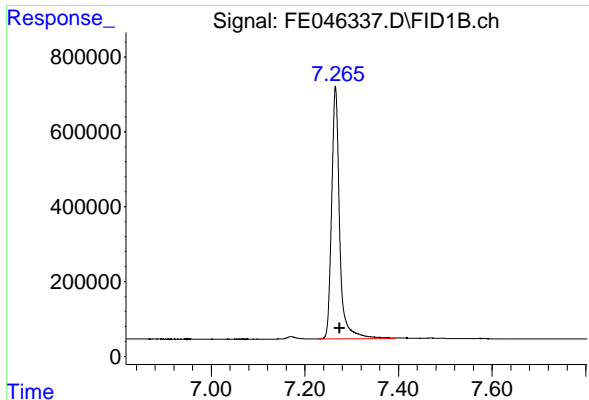
#3 A~Naphthalene (C11.7)

R.T.: 6.170 min  
 Delta R.T.: -0.007 min  
 Response: 8278134  
 Conc: 49.78 ug/ml



#4 n-Dodecane (C12)

R.T.: 6.634 min  
 Delta R.T.: -0.009 min  
 Response: 7522085  
 Conc: 48.18 ug/ml



#5 A~2-methylnaphthalene (C12.89)

R.T.: 7.265 min  
 Delta R.T.: -0.008 min  
 Response: 8046915  
 Conc: 50.54 ug/ml

Instrument :

FID\_E

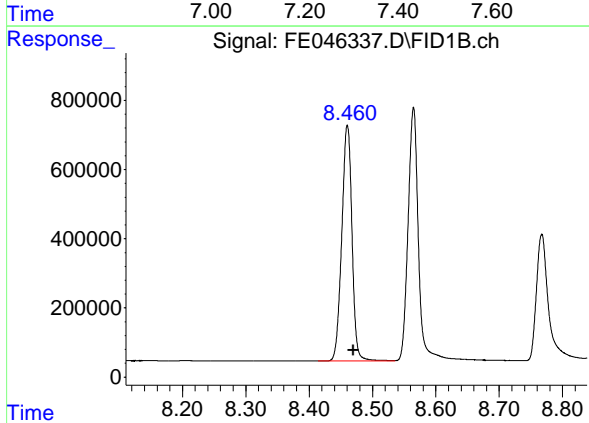
Client Sample Id :

PB158547BSD

Manual Integrations

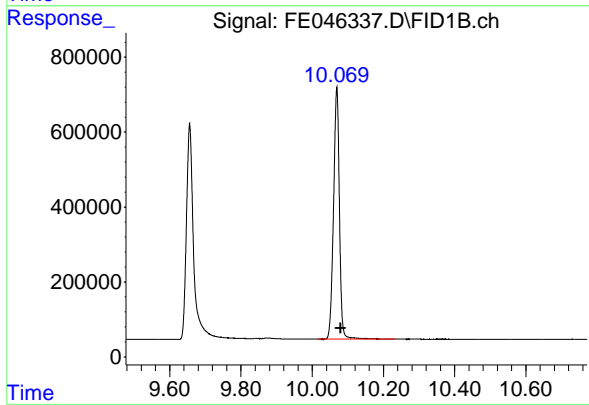
APPROVED

Reviewed By :Ankita Jodhani 01/23/2024  
 Supervised By :Sohil Jodhani 01/23/2024



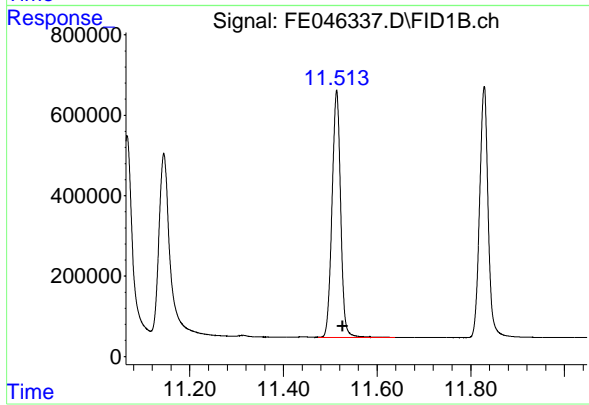
#6 n-Tetradecane (C14)

R.T.: 8.460 min  
 Delta R.T.: -0.010 min  
 Response: 7646023  
 Conc: 49.08 ug/ml



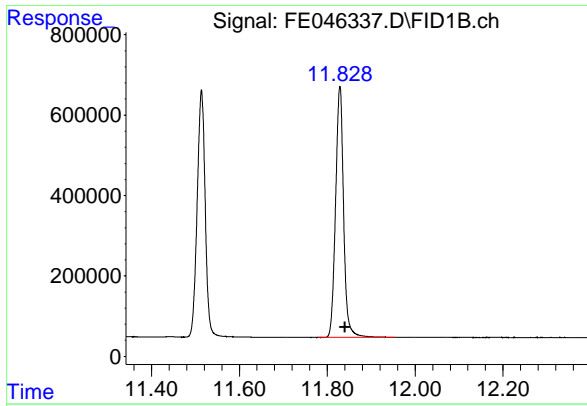
#7 n-Hexadecane (C16)

R.T.: 10.069 min  
 Delta R.T.: -0.011 min  
 Response: 7712130  
 Conc: 48.70 ug/ml



#8 n-Octadecane (C18)

R.T.: 11.514 min  
 Delta R.T.: -0.013 min  
 Response: 7820299  
 Conc: 49.69 ug/ml



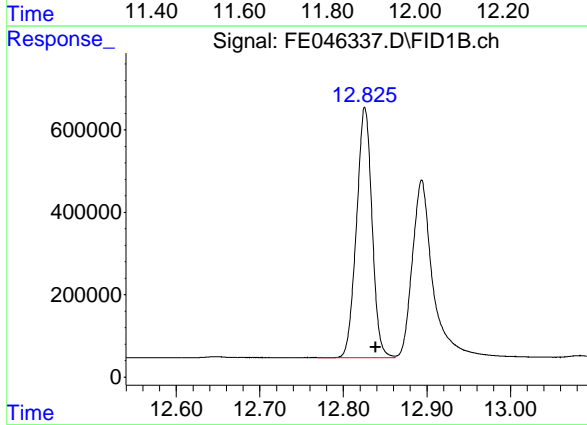
#9 ortho-Terphenyl (SURRE)

R.T.: 11.829 min  
 Delta R.T.: -0.011 min  
 Response: 7907012  
 Conc: 43.51 ug/ml

Instrument : FID\_E  
 Client Sample Id : PB158547BSD

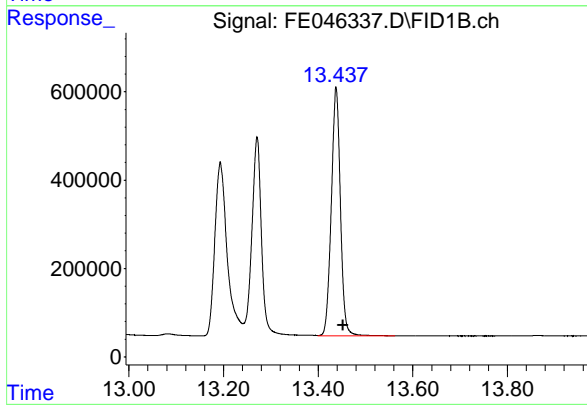
Manual Integrations  
 APPROVED

Reviewed By :Ankita Jodhani 01/23/2024  
 Supervised By :Sohil Jodhani 01/23/2024



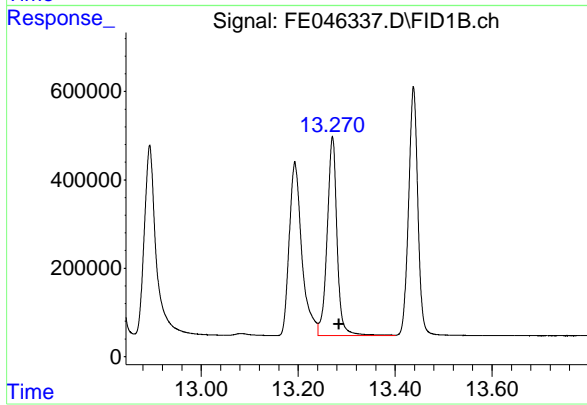
#10 n-Eicosane (C20)

R.T.: 12.826 min  
 Delta R.T.: -0.013 min  
 Response: 7823639  
 Conc: 51.72 ug/ml



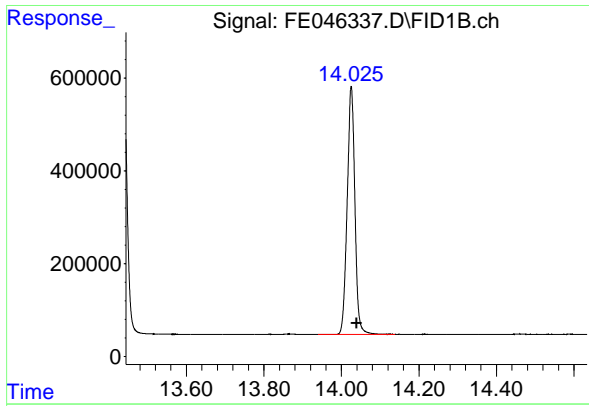
#11 n-Heneicosane (C21)

R.T.: 13.438 min  
 Delta R.T.: -0.015 min  
 Response: 7506730  
 Conc: 51.05 ug/ml



#12 1-chlorooctadecane (SURRE)

R.T.: 13.271 min  
 Delta R.T.: -0.013 min  
 Response: 6414857  
 Conc: 48.01 ug/ml



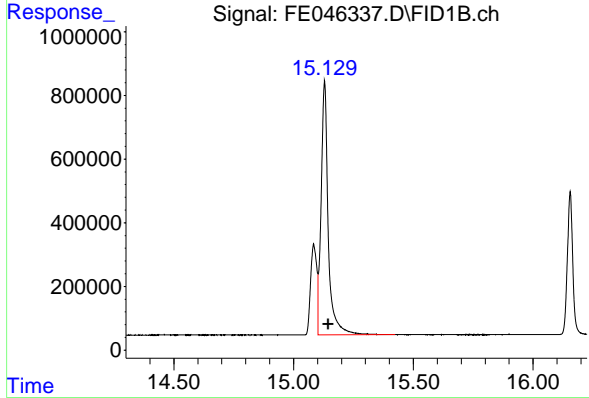
#13 n-Docosane (C22)

R.T.: 14.025 min  
 Delta R.T.: -0.014 min  
 Response: 7384812  
 Conc: 50.52 ug/ml

Instrument : FID\_E  
 Client Sample Id : PB158547BSD

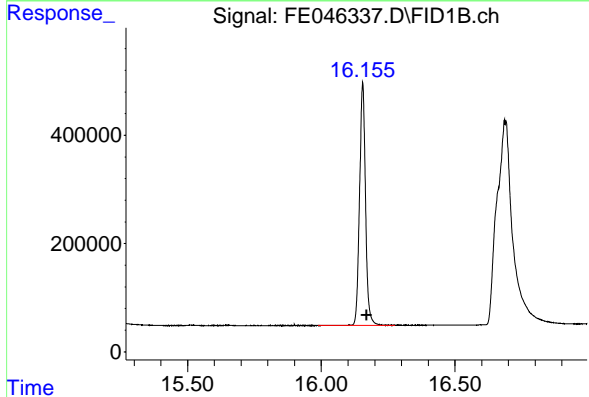
Manual Integrations  
 APPROVED

Reviewed By :Ankita Jodhani 01/23/2024  
 Supervised By :Sohil Jodhani 01/23/2024



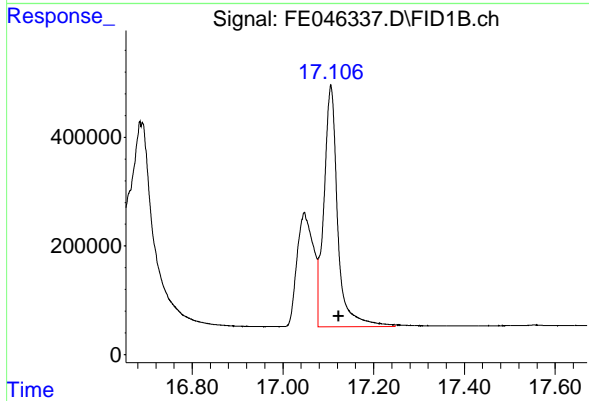
#14 n-Tetracosane (C24)

R.T.: 15.130 min  
 Delta R.T.: -0.016 min  
 Response: 16592331  
 Conc: 114.40 ug/ml



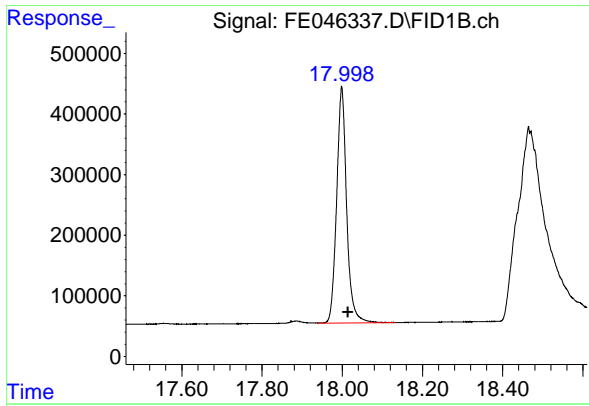
#15 n-Hexacosane (C26)

R.T.: 16.155 min  
 Delta R.T.: -0.015 min  
 Response: 6960401  
 Conc: 48.55 ug/ml



#16 n-Octacosane (C28)

R.T.: 17.106 min  
 Delta R.T.: -0.017 min  
 Response: 9297670  
 Conc: 64.83 ug/ml m



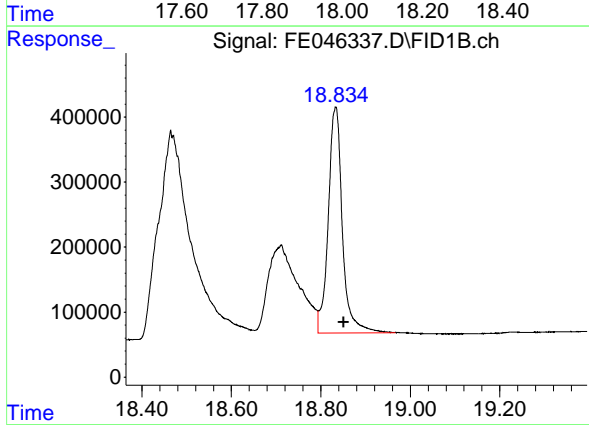
#17 n-Tricontane (C30)

R.T.: 17.999 min  
 Delta R.T.: -0.015 min  
 Response: 6744994  
 Conc: 45.38 ug/ml

Instrument :  
 FID\_E  
 Client Sample Id :  
 PB158547BSD

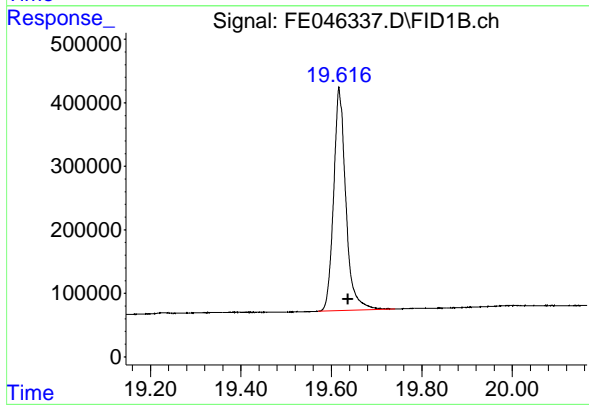
Manual Integrations  
 APPROVED

Reviewed By :Ankita Jodhani 01/23/2024  
 Supervised By :Sohil Jodhani 01/23/2024



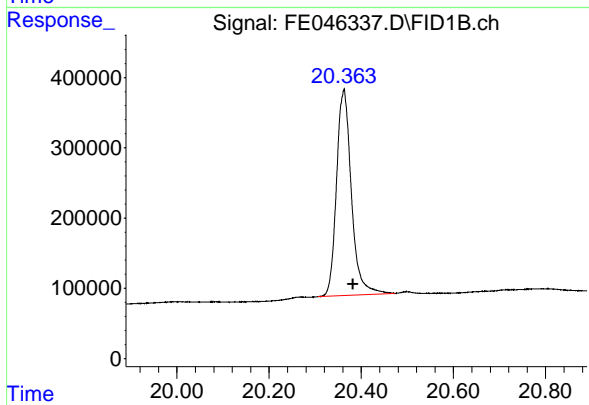
#18 n-Dotriacontane (C32)

R.T.: 18.834 min  
 Delta R.T.: -0.018 min  
 Response: 7610693  
 Conc: 50.89 ug/ml m



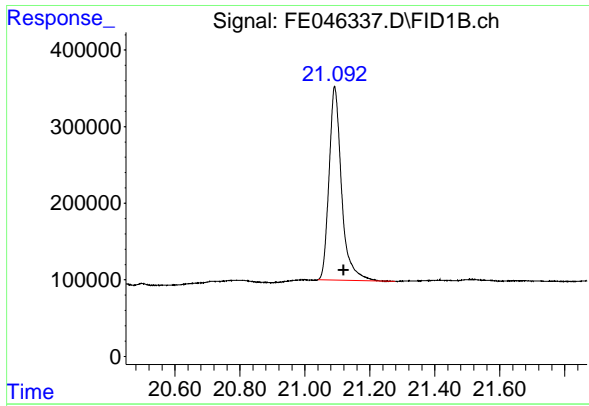
#19 n-Tetracontane (C34)

R.T.: 19.617 min  
 Delta R.T.: -0.020 min  
 Response: 6580032  
 Conc: 45.93 ug/ml



#20 n-Hexatriacontane (C36)

R.T.: 20.363 min  
 Delta R.T.: -0.019 min  
 Response: 6579786  
 Conc: 45.13 ug/ml m



#21 n-Octatriacontane (C38)

R.T.: 21.091 min  
 Delta R.T.: -0.028 min  
 Response: 6764743  
 Conc: 45.88 ug/ml

Instrument :

FID\_E

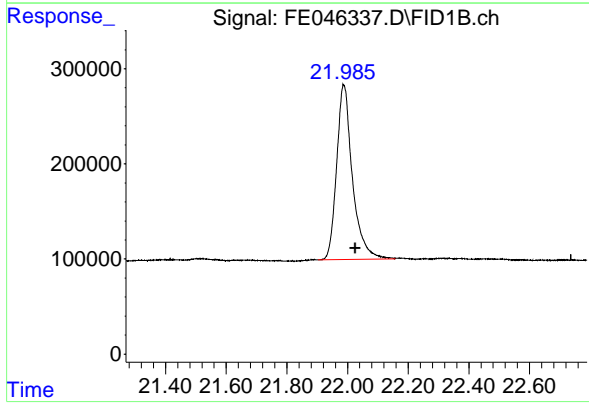
ClientSampleId :

PB158547BSD

Manual Integrations

APPROVED

Reviewed By :Ankita Jodhani 01/23/2024  
 Supervised By :Sohil Jodhani 01/23/2024



#22 n-Tetracontane (C40)

R.T.: 21.985 min  
 Delta R.T.: -0.040 min  
 Response: 6647948  
 Conc: 42.47 ug/ml m