

Data Path : Z:\pestpcbsrv\HPCHEM1\FID_E\Data\FE012323AL\
 Data File : FE039970.D
 Signal(s) : FID1B.ch
 Acq On : 23 Jan 2023 17:10
 Operator : YP\AJ
 Sample : 01252-01
 Misc :
 ALS Vial : 10 Sample Multiplier: 1

Integration File: autoint1.e
 Quant Time: Jan 24 01:29:49 2023
 Quant Method : Z:\pestpcbsrv\HPCHEM1\FID_E\methods\Aliphatic EPH 011023.M
 Quant Title : GC Extractables
 QLast Update : Tue Jan 10 04:24:52 2023
 Response via : Initial Calibration
 Integrator: ChemStation

Volume Inj. : 1 ul
 Signal Phase : Rxi-1ms
 Signal Info : 20M x 0.18mm x 0.18um

Compound	R.T.	Response	Conc Units

System Monitoring Compounds			
9) S ortho-Terphenyl (SURR)	11.911	5207671	33.912 ug/ml
Spiked Amount	50.000	Recovery	= 67.82%
12) S 1-chlorooctadecane (S...	13.348	4107846	35.201 ug/ml
Spiked Amount	50.000	Recovery	= 70.40%

Target Compounds

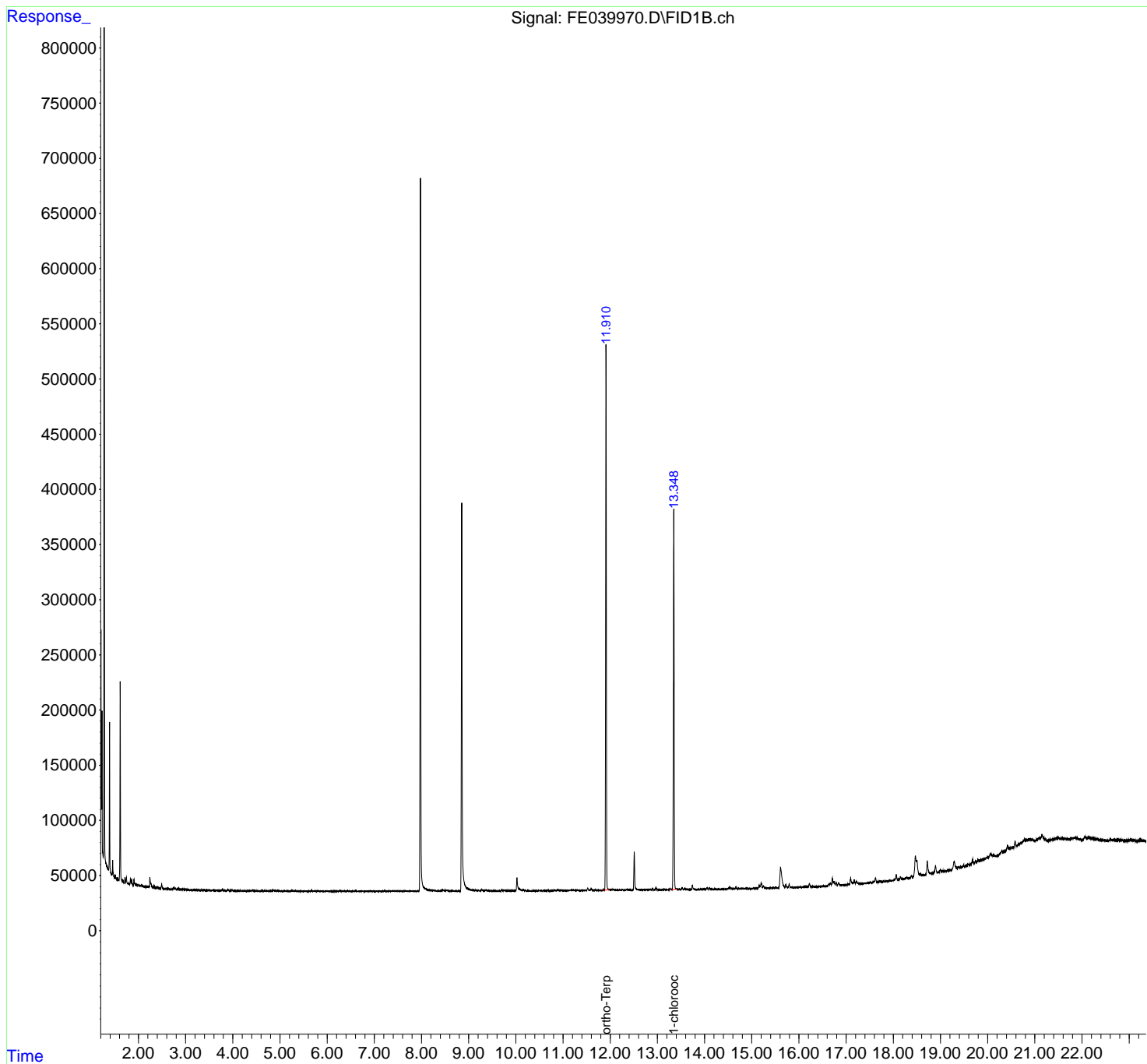
(f)=RT Delta > 1/2 Window

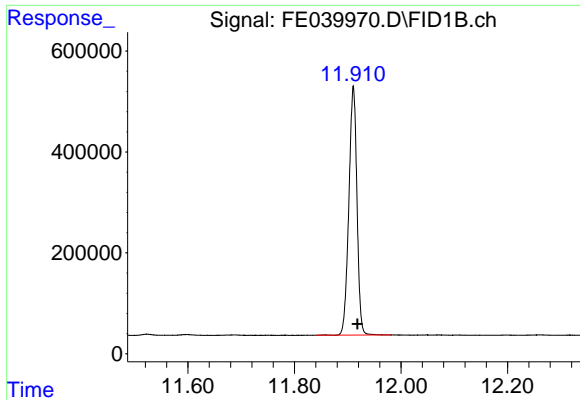
(m)=manual int.

Data Path : Z:\pestpcbsrv\HPCHEM1\FID_E\Data\FE012323AL\
 Data File : FE039970.D
 Signal(s) : FID1B.ch
 Acq On : 23 Jan 2023 17:10
 Operator : YP\AJ
 Sample : 01252-01
 Misc :
 ALS Vial : 10 Sample Multiplier: 1

Integration File: autoint1.e
 Quant Time: Jan 24 01:29:49 2023
 Quant Method : Z:\pestpcbsrv\HPCHEM1\FID_E\methods\Aliphatic EPH 011023.M
 Quant Title : GC Extractables
 QLast Update : Tue Jan 10 04:24:52 2023
 Response via : Initial Calibration
 Integrator: ChemStation

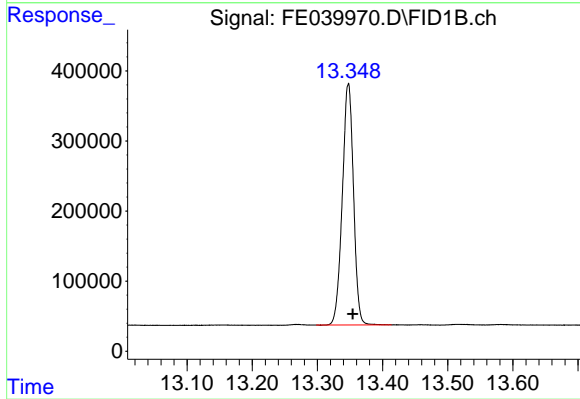
Volume Inj. : 1 ul
 Signal Phase : Rxi-1ms
 Signal Info : 20M x 0.18mm x 0.18um





#9 ortho-Terphenyl (SURR)

R.T.: 11.911 min
Delta R.T.: -0.007 min
Response: 5207671
Conc: 33.91 ug/ml



#12 1-chlorooctadecane (SURR)

R.T.: 13.348 min
Delta R.T.: -0.006 min
Response: 4107846
Conc: 35.20 ug/ml