

Data Path : Z:\pestpcbsrv\HPCHEM1\FID\_E\Data\FE012324AL\  
 Data File : FE046357.D  
 Signal(s) : FID1B.ch  
 Acq On : 23 Jan 2024 16:11  
 Operator : YP\AJ  
 Sample : P1219-01  
 Misc :  
 ALS Vial : 16 Sample Multiplier: 1

Integration File: autoint1.e  
 Quant Time: Jan 24 00:02:05 2024  
 Quant Method : Z:\pestpcbsrv\HPCHEM1\FID\_E\methods\Aliphatic EPH 122923.M  
 Quant Title : GC Extractables  
 QLast Update : Fri Dec 29 03:49:54 2023  
 Response via : Initial Calibration  
 Integrator: ChemStation

Volume Inj. : 1 ul  
 Signal Phase : Rxi-1ms  
 Signal Info : 20M x 0.18mm x 0.18um

Compound	R.T.	Response	Conc Units
-----			
System Monitoring Compounds			
9) S ortho-Terphenyl (SURR)	11.824	6289631	34.611 ug/ml
Spiked Amount	50.000	Recovery	= 69.22%
12) S 1-chlorooctadecane (S...	13.265	5191340	38.854 ug/ml
Spiked Amount	50.000	Recovery	= 77.71%

Target Compounds

-----

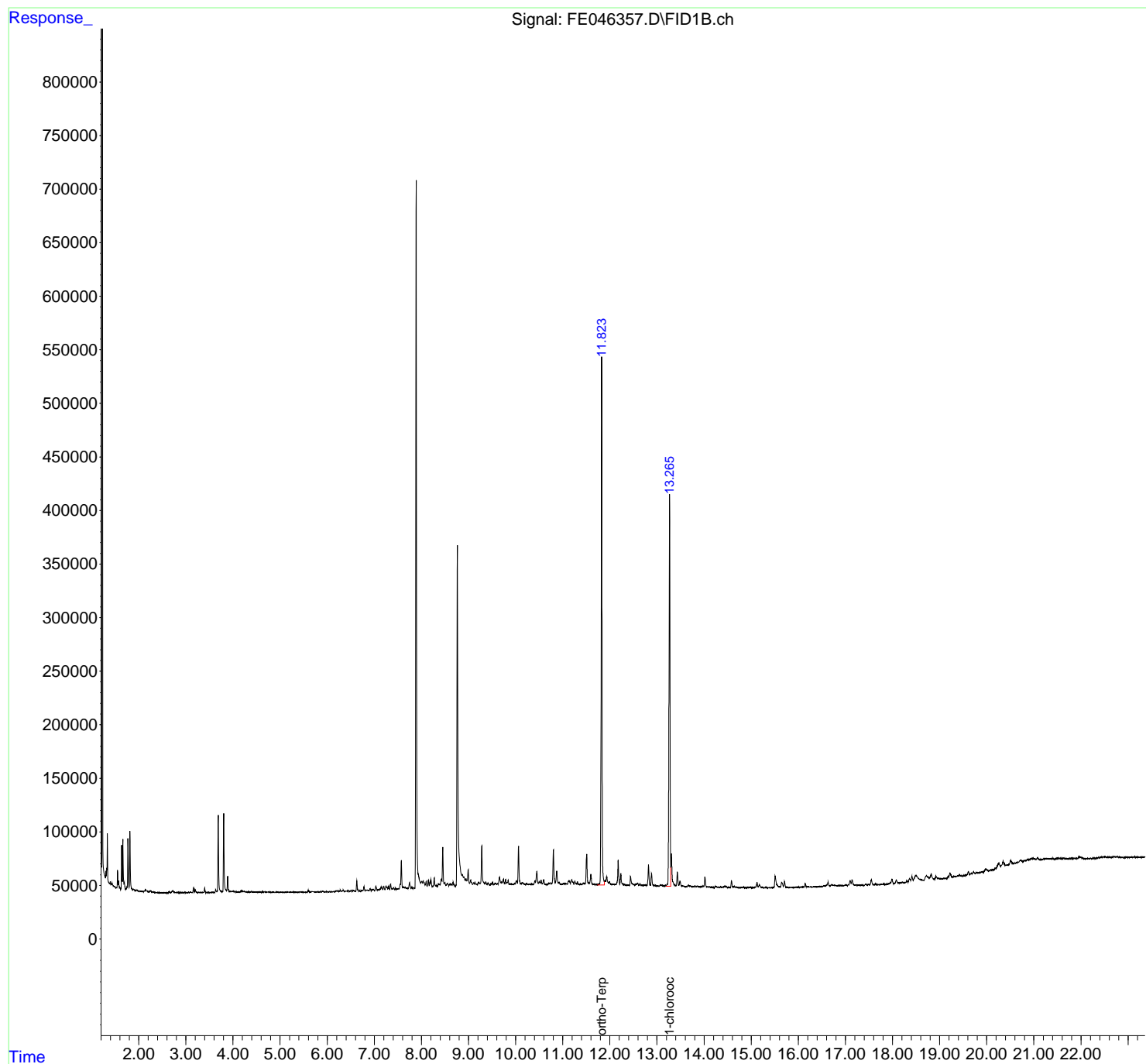
(f)=RT Delta > 1/2 Window

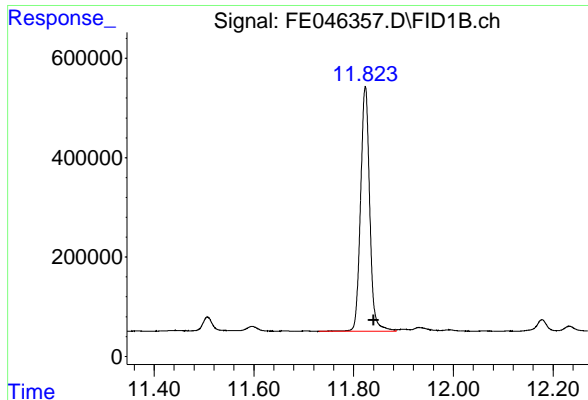
(m)=manual int.

Data Path : Z:\pestpcbsrv\HPCHEM1\FID\_E\Data\FE012324AL\  
 Data File : FE046357.D  
 Signal(s) : FID1B.ch  
 Acq On : 23 Jan 2024 16:11  
 Operator : YP\AJ  
 Sample : P1219-01  
 Misc :  
 ALS Vial : 16 Sample Multiplier: 1

Integration File: autoint1.e  
 Quant Time: Jan 24 00:02:05 2024  
 Quant Method : Z:\pestpcbsrv\HPCHEM1\FID\_E\methods\Aliphatic EPH 122923.M  
 Quant Title : GC Extractables  
 QLast Update : Fri Dec 29 03:49:54 2023  
 Response via : Initial Calibration  
 Integrator: ChemStation

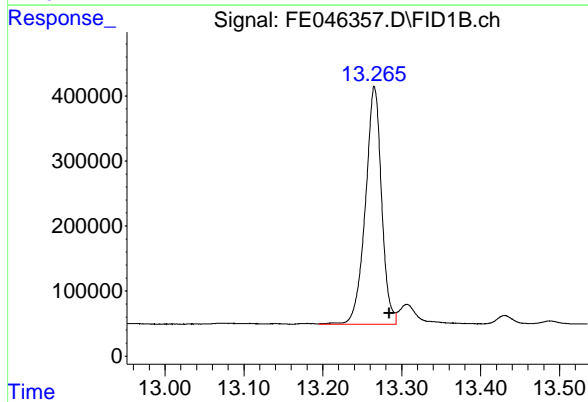
Volume Inj. : 1 ul  
 Signal Phase : Rxi-1ms  
 Signal Info : 20M x 0.18mm x 0.18um





#9 ortho-Terphenyl (SURR)

R.T.: 11.824 min  
Delta R.T.: -0.017 min  
Response: 6289631  
Conc: 34.61 ug/ml



#12 1-chlorooctadecane (SURR)

R.T.: 13.265 min  
Delta R.T.: -0.019 min  
Response: 5191340  
Conc: 38.85 ug/ml