

Data Path : Z:\pestpcbsrv\HPCHEM1\FID_E\Data\FE012423AL\
 Data File : FE040011.D
 Signal(s) : FID1B.ch
 Acq On : 24 Jan 2023 22:29
 Operator : YP\AJ
 Sample : 20 PPM ALIPHATIC HC STD
 Misc :
 ALS Vial : 3 Sample Multiplier: 1

Integration File: autoint1.e
 Quant Time: Jan 24 23:48:20 2023
 Quant Method : Z:\pestpcbsrv\HPCHEM1\FID_E\methods\Aliphatic EPH 011023.M
 Quant Title : GC Extractables
 QLast Update : Tue Jan 10 04:24:52 2023
 Response via : Initial Calibration
 Integrator: ChemStation

Volume Inj. : 1 ul
 Signal Phase : Rxi-1ms
 Signal Info : 20M x 0.18mm x 0.18um

| Compound | R.T. | Response | Conc Units |
|--------------------------------|--------|------------|--------------|
| ----- | | | |
| System Monitoring Compounds | | | |
| 9) S ortho-Terphenyl (SURR) | 11.903 | 3012778 | 19.619 ug/ml |
| Spiked Amount | 50.000 | Recovery = | 39.24% |
| 12) S 1-chlorooctadecane (S... | 13.340 | 2296189 | 19.676 ug/ml |
| Spiked Amount | 50.000 | Recovery = | 39.35% |
| Target Compounds | | | |
| 1) T n-Nonane (C9) | 3.301 | 2627794 | 20.702 ug/ml |
| 2) T n-Decane (C10) | 4.548 | 2587235 | 20.833 ug/ml |
| 3) T A~Naphthalene (C11.7) | 6.250 | 2841021 | 20.145 ug/ml |
| 4) T n-Dodecane (C12) | 6.712 | 2618918 | 20.830 ug/ml |
| 5) T A~2-methylnaphthalene... | 7.345 | 2662774 | 20.330 ug/ml |
| 6) T n-Tetradecane (C14) | 8.538 | 2655372 | 20.646 ug/ml |
| 7) T n-Hexadecane (C16) | 10.144 | 2737955 | 20.295 ug/ml |
| 8) T n-Octadecane (C18) | 11.586 | 2793584 | 19.936 ug/ml |
| 10) T n-Eicosane (C20) | 12.894 | 2729783 | 19.702 ug/ml |
| 11) T n-Heneicosane (C21) | 13.507 | 2731013 | 19.571 ug/ml |
| 13) T n-Docosane (C22) | 14.094 | 2717238 | 19.576 ug/ml |
| 14) T n-Tetracosane (C24) | 15.197 | 2751085 | 19.982 ug/ml |
| 15) T n-Hexacosane (C26) | 16.218 | 2649100 | 19.849 ug/ml |
| 16) T n-Octacosane (C28) | 17.166 | 2673913 | 20.541 ug/ml |
| 17) T n-Tricontane (C30) | 18.054 | 2671460 | 20.948 ug/ml |
| 18) T n-Dotriacontane (C32) | 18.887 | 2686160 | 21.248 ug/ml |
| 19) T n-Tetratriacontane (C34) | 19.673 | 2541876 | 20.571 ug/ml |
| 20) T n-Hexatriacontane (C36) | 20.412 | 2394267 | 20.308 ug/ml |
| 21) T n-Octatriacontane (C38) | 21.145 | 2348218 | 19.647 ug/ml |
| 22) T n-Tetracontane (C40) | 22.042 | 2368727 | 19.517 ug/ml |
| ----- | | | |

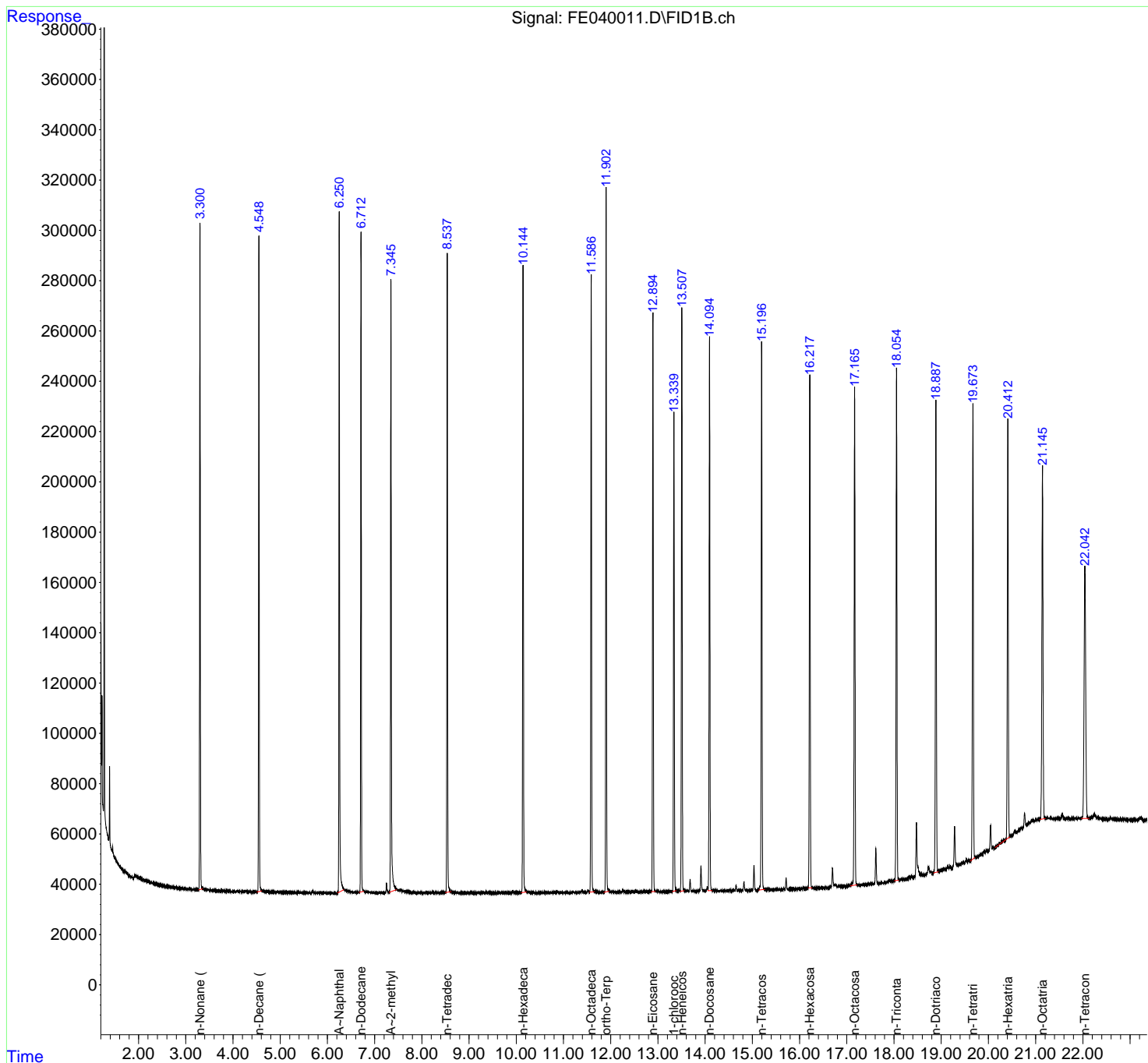
(f)=RT Delta > 1/2 Window

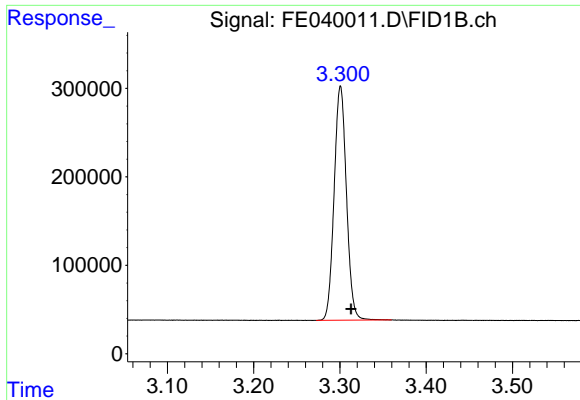
(m)=manual int.

Data Path : Z:\pestpcbsrv\HPCHEM1\FID_E\Data\FE012423AL\
 Data File : FE040011.D
 Signal(s) : FID1B.ch
 Acq On : 24 Jan 2023 22:29
 Operator : YP\AJ
 Sample : 20 PPM ALIPHATIC HC STD
 Misc :
 ALS Vial : 3 Sample Multiplier: 1

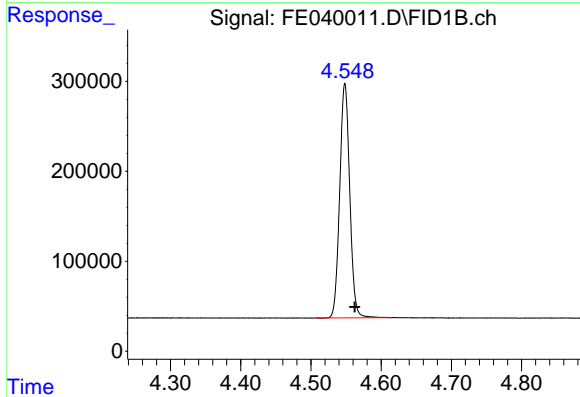
Integration File: autoint1.e
 Quant Time: Jan 24 23:48:20 2023
 Quant Method : Z:\pestpcbsrv\HPCHEM1\FID_E\methods\Aliphatic EPH 011023.M
 Quant Title : GC Extractables
 QLast Update : Tue Jan 10 04:24:52 2023
 Response via : Initial Calibration
 Integrator: ChemStation

Volume Inj. : 1 ul
 Signal Phase : Rxi-1ms
 Signal Info : 20M x 0.18mm x 0.18um

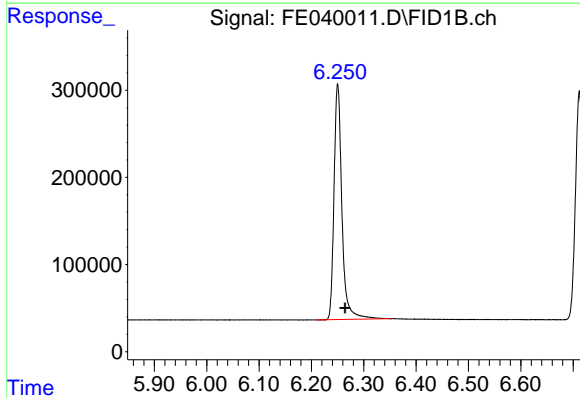




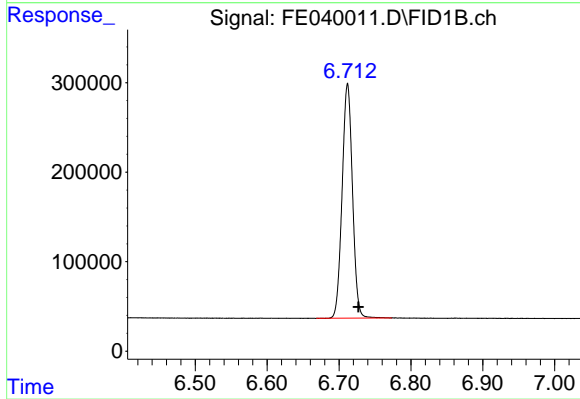
#1 n-Nonane (C9)
R.T.: 3.301 min
Delta R.T.: -0.012 min
Response: 2627794
Conc: 20.70 ug/ml



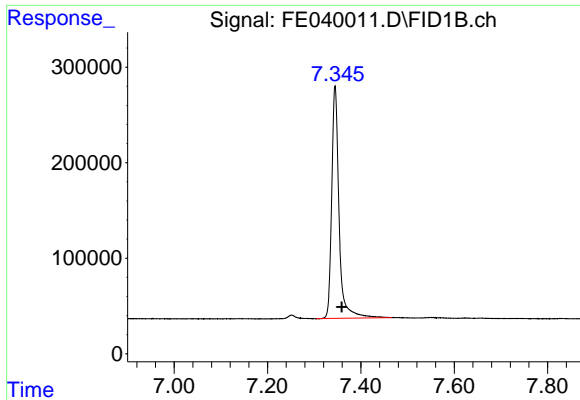
#2 n-Decane (C10)
R.T.: 4.548 min
Delta R.T.: -0.014 min
Response: 2587235
Conc: 20.83 ug/ml



#3 A~Naphthalene (C11.7)
R.T.: 6.250 min
Delta R.T.: -0.014 min
Response: 2841021
Conc: 20.15 ug/ml

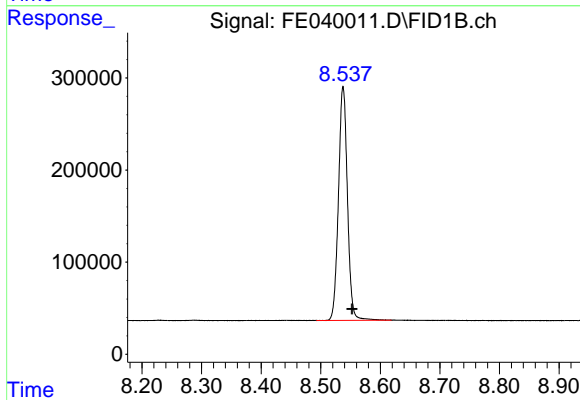


#4 n-Dodecane (C12)
R.T.: 6.712 min
Delta R.T.: -0.015 min
Response: 2618918
Conc: 20.83 ug/ml



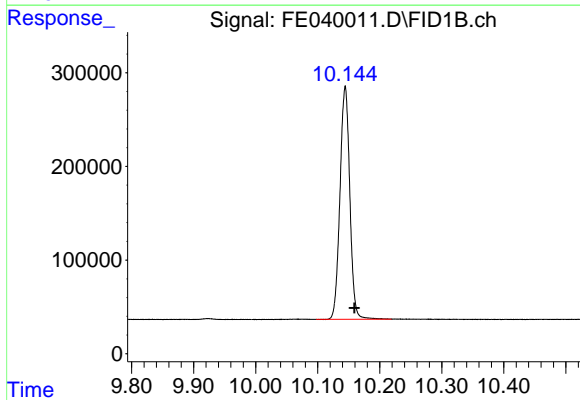
#5 A~2-methylnaphthalene (C12.89)

R.T.: 7.345 min
Delta R.T.: -0.014 min
Response: 2662774
Conc: 20.33 ug/ml



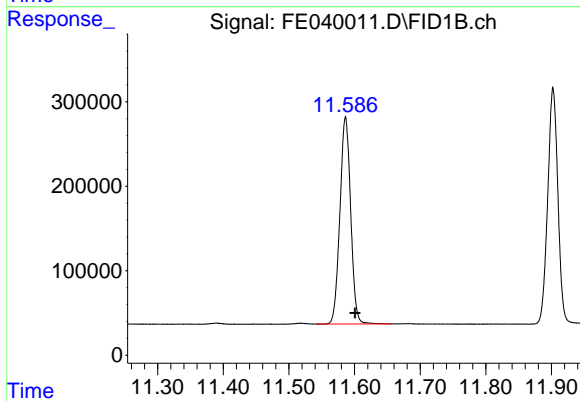
#6 n-Tetradecane (C14)

R.T.: 8.538 min
Delta R.T.: -0.015 min
Response: 2655372
Conc: 20.65 ug/ml



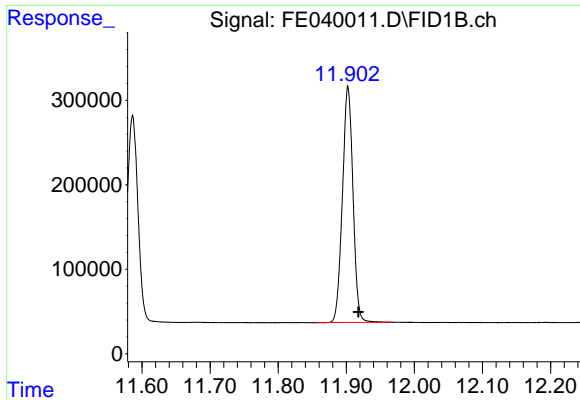
#7 n-Hexadecane (C16)

R.T.: 10.144 min
Delta R.T.: -0.015 min
Response: 2737955
Conc: 20.30 ug/ml



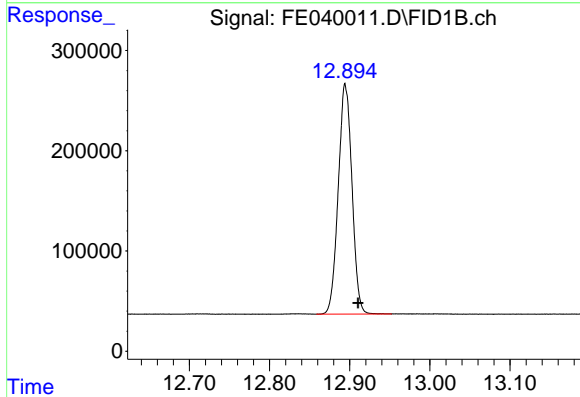
#8 n-Octadecane (C18)

R.T.: 11.586 min
Delta R.T.: -0.015 min
Response: 2793584
Conc: 19.94 ug/ml



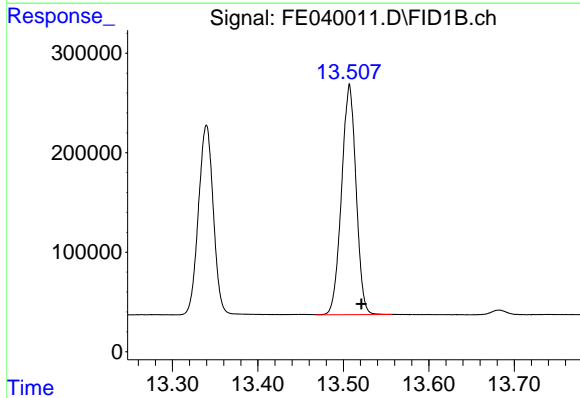
#9 ortho-Terphenyl (SURR)

R.T.: 11.903 min
 Delta R.T.: -0.015 min
 Response: 3012778
 Conc: 19.62 ug/ml



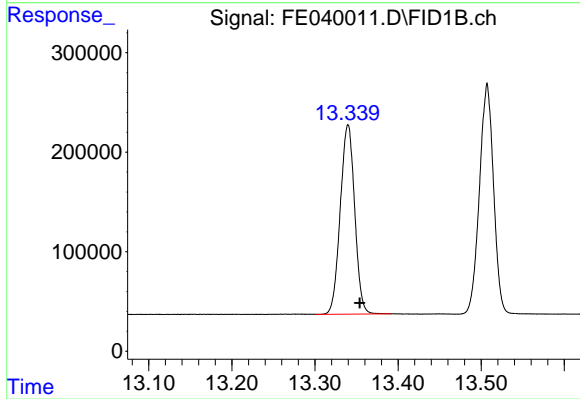
#10 n-Eicosane (C20)

R.T.: 12.894 min
 Delta R.T.: -0.016 min
 Response: 2729783
 Conc: 19.70 ug/ml



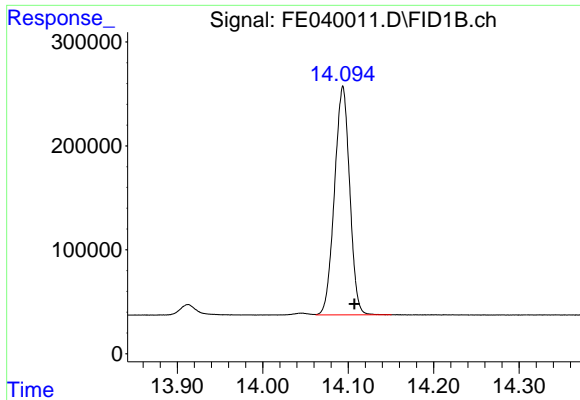
#11 n-Heneicosane (C21)

R.T.: 13.507 min
 Delta R.T.: -0.014 min
 Response: 2731013
 Conc: 19.57 ug/ml

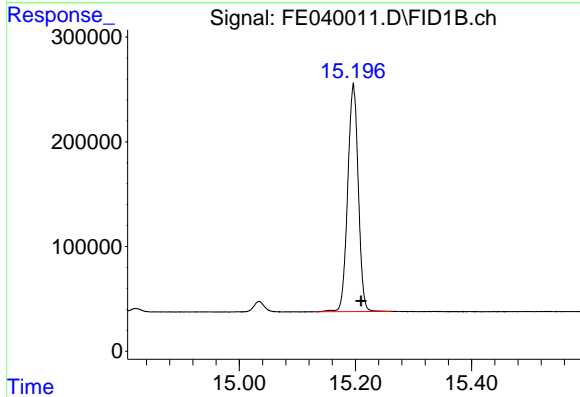


#12 1-chlorooctadecane (SURR)

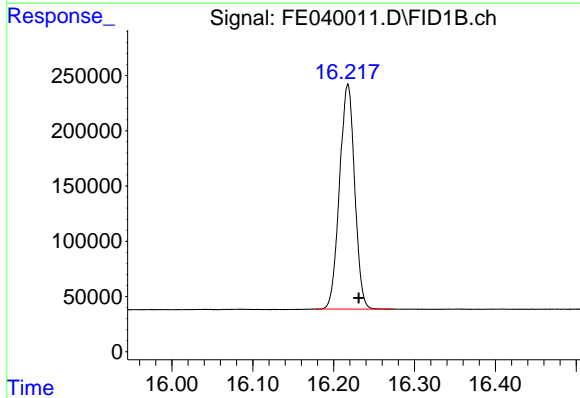
R.T.: 13.340 min
 Delta R.T.: -0.014 min
 Response: 2296189
 Conc: 19.68 ug/ml



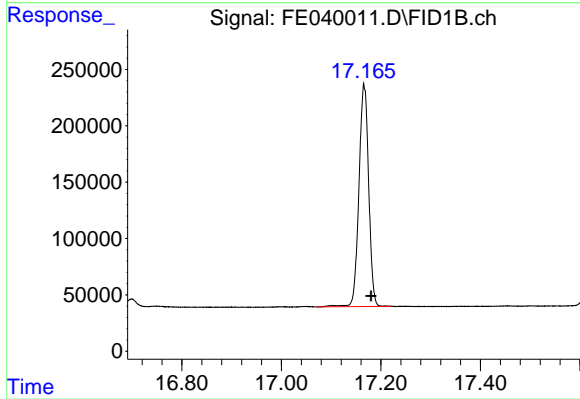
#13 n-Docosane (C22)
R.T.: 14.094 min
Delta R.T.: -0.014 min
Response: 2717238
Conc: 19.58 ug/ml



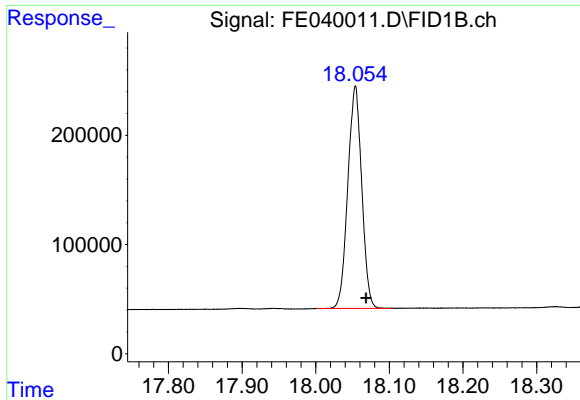
#14 n-Tetracosane (C24)
R.T.: 15.197 min
Delta R.T.: -0.013 min
Response: 2751085
Conc: 19.98 ug/ml



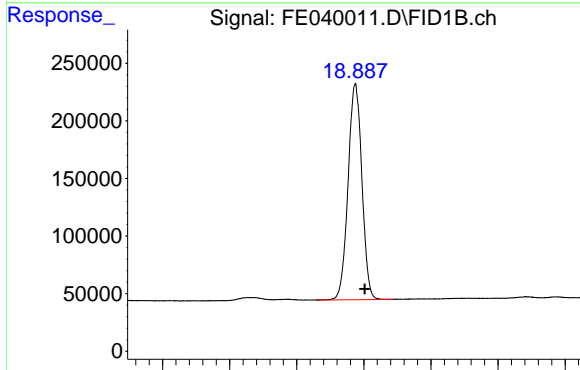
#15 n-Hexacosane (C26)
R.T.: 16.218 min
Delta R.T.: -0.014 min
Response: 2649100
Conc: 19.85 ug/ml



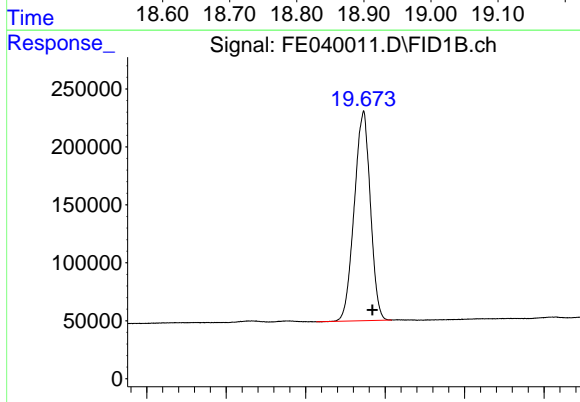
#16 n-Octacosane (C28)
R.T.: 17.166 min
Delta R.T.: -0.014 min
Response: 2673913
Conc: 20.54 ug/ml



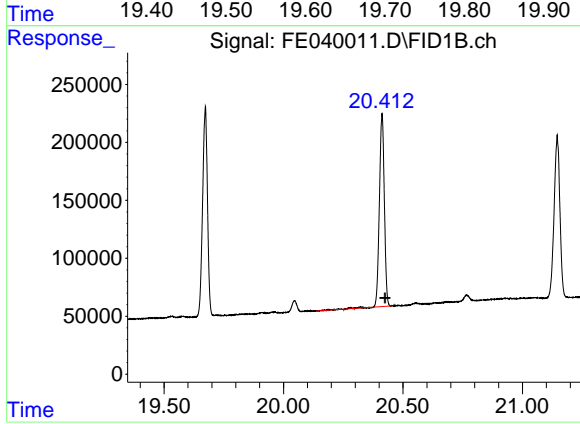
#17 n-Tricontane (C30)
R.T.: 18.054 min
Delta R.T.: -0.015 min
Response: 2671460
Conc: 20.95 ug/ml



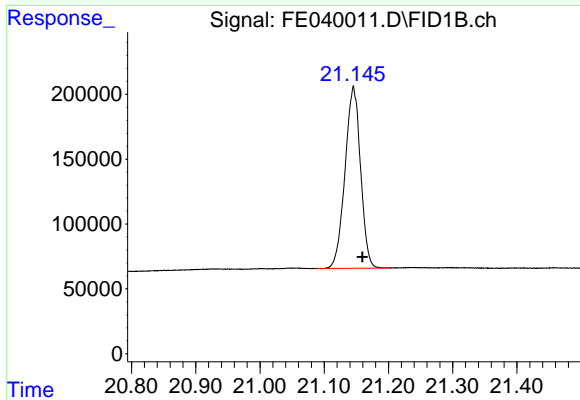
#18 n-Dotriacontane (C32)
R.T.: 18.887 min
Delta R.T.: -0.014 min
Response: 2686160
Conc: 21.25 ug/ml



#19 n-Tetratriacontane (C34)
R.T.: 19.673 min
Delta R.T.: -0.011 min
Response: 2541876
Conc: 20.57 ug/ml

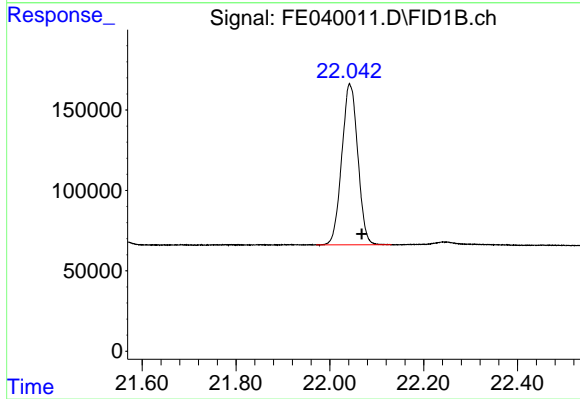


#20 n-Hexatriacontane (C36)
R.T.: 20.412 min
Delta R.T.: -0.013 min
Response: 2394267
Conc: 20.31 ug/ml



#21 n-Octatriacontane (C38)

R.T.: 21.145 min
Delta R.T.: -0.014 min
Response: 2348218
Conc: 19.65 ug/ml



#22 n-Tetracontane (C40)

R.T.: 22.042 min
Delta R.T.: -0.026 min
Response: 2368727
Conc: 19.52 ug/ml