

Data Path : Z:\pestpcbsrv\HPCHEM1\FID\_E\Data\FE012423AL\  
 Data File : FE040019.D  
 Signal(s) : FID1B.ch  
 Acq On : 25 Jan 2023 03:05  
 Operator : YP\AJ  
 Sample : 01268-01  
 Misc :  
 ALS Vial : 27 Sample Multiplier: 1

Integration File: autoint1.e  
 Quant Time: Jan 25 05:52:52 2023  
 Quant Method : Z:\pestpcbsrv\HPCHEM1\FID\_E\methods\Aliphatic EPH 011023.M  
 Quant Title : GC Extractables  
 QLast Update : Tue Jan 10 04:24:52 2023  
 Response via : Initial Calibration  
 Integrator: ChemStation

Volume Inj. : 1 ul  
 Signal Phase : Rxi-1ms  
 Signal Info : 20M x 0.18mm x 0.18um

Compound	R.T.	Response	Conc Units
-----			
System Monitoring Compounds			
9) S ortho-Terphenyl (SURR)	11.904	5697837	37.103 ug/ml
Spiked Amount	50.000	Recovery	= 74.21%
12) S 1-chlorooctadecane (S...	13.340	5334362	45.711 ug/ml
Spiked Amount	50.000	Recovery	= 91.42%

Target Compounds

-----

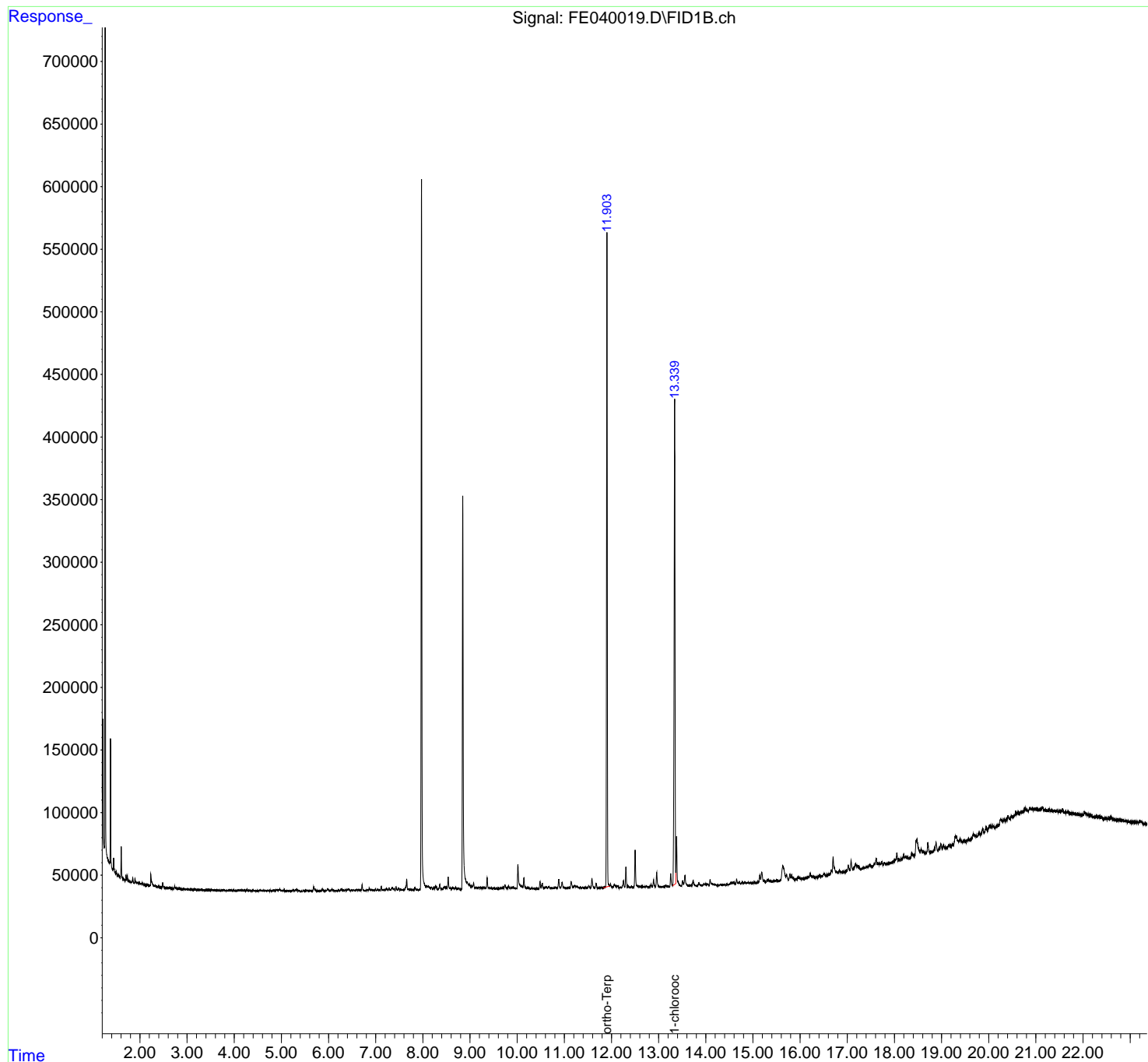
(f)=RT Delta > 1/2 Window

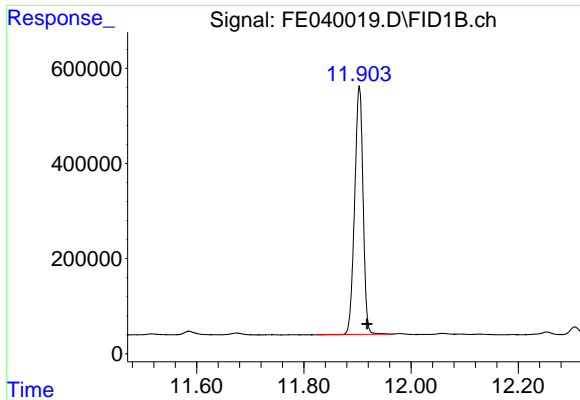
(m)=manual int.

Data Path : Z:\pestpcbsrv\HPCHEM1\FID\_E\Data\FE012423AL\  
Data File : FE040019.D  
Signal(s) : FID1B.ch  
Acq On : 25 Jan 2023 03:05  
Operator : YP\AJ  
Sample : 01268-01  
Misc :  
ALS Vial : 27 Sample Multiplier: 1

Integration File: autoint1.e  
Quant Time: Jan 25 05:52:52 2023  
Quant Method : Z:\pestpcbsrv\HPCHEM1\FID\_E\methods\Aliphatic EPH 011023.M  
Quant Title : GC Extractables  
QLast Update : Tue Jan 10 04:24:52 2023  
Response via : Initial Calibration  
Integrator: ChemStation

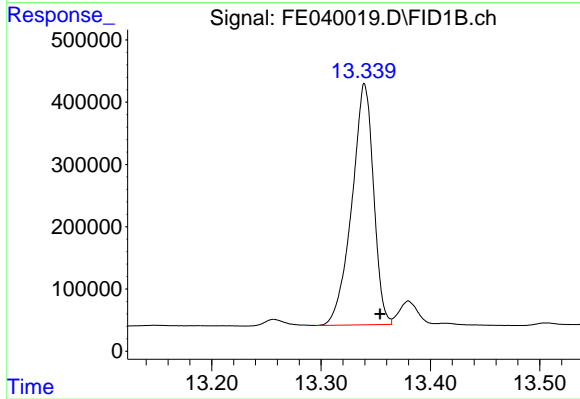
Volume Inj. : 1 ul  
Signal Phase : Rxi-1ms  
Signal Info : 20M x 0.18mm x 0.18um





#9 ortho-Terphenyl (SURR)

R.T.: 11.904 min  
Delta R.T.: -0.014 min  
Response: 5697837  
Conc: 37.10 ug/ml



#12 1-chlorooctadecane (SURR)

R.T.: 13.340 min  
Delta R.T.: -0.014 min  
Response: 5334362  
Conc: 45.71 ug/ml