

Data Path : Z:\pestpcbsrv\HPCHEM1\FID_E\Data\FE012822AL\
 Data File : FE034748.D
 Signal(s) : FID1B.CH
 Acq On : 29 Jan 2022 2:45
 Operator : AJ\MA
 Sample : 20 PPM ALIPHATIC HC STD
 Misc :
 ALS Vial : 4 Sample Multiplier: 1

Integration File: autoint1.e
 Quant Time: Jan 29 03:08:58 2022
 Quant Method : Z:\pestpcbsrv\HPCHEM1\FID_E\methods\Aliphatic EPH 012822.M
 Quant Title : GC Extractables
 QLast Update : Sat Jan 29 00:52:24 2022
 Response via : Initial Calibration
 Integrator: ChemStation 6890 Scale Mode: Large solvent peaks clipped

Volume Inj. : 1 ul
 Signal Phase : Rxi-1ms
 Signal Info : 20M x 0.18mm x 0.18um

Compound	R.T.	Response	Conc Units

System Monitoring Compounds			
9) S ortho-Terphenyl (SURR)	11.058	2507267	19.539 ug/ml
Spiked Amount	50.000	Recovery	= 39.08%
12) S 1-chlorooctadecane (S...	12.492	1885934	19.543 ug/ml
Spiked Amount	50.000	Recovery	= 39.09%
Target Compounds			
1) T n-Nonane (C9)	2.910	2217179	19.449 ug/ml
2) T n-Decane (C10)	3.939	2239405	19.472 ug/ml
3) T A~Naphthalene (C11.7)	5.497	2497729	19.463 ug/ml
4) T n-Dodecane (C12)	5.934	2228709	19.424 ug/ml
5) T A~2-methylnaphthalene...	6.544	2511363	19.486 ug/ml
6) T n-Tetradecane (C14)	7.720	2249799	19.448 ug/ml
7) T n-Hexadecane (C16)	9.314	2231381	19.473 ug/ml
8) T n-Octadecane (C18)	10.749	2242289	19.464 ug/ml
10) T n-Eicosane (C20)	12.053	2185360	19.526 ug/ml
11) T n-Heneicosane (C21)	12.661	2189202	19.537 ug/ml
13) T n-Docosane (C22)	13.245	2153998	19.554 ug/ml
14) T n-Tetracosane (C24)	14.343	2125384	19.618 ug/ml
15) T n-Hexacosane (C26)	15.359	2061962	19.711 ug/ml
16) T n-Octacosane (C28)	16.303	2016540	19.758 ug/ml
17) T n-Tricontane (C30)	17.187	1955106	19.783 ug/ml
18) T n-Dotriacontane (C32)	18.015	1820564	19.822 ug/ml
19) T n-Tetratriacontane (C34)	18.796	1717901	19.723 ug/ml
20) T n-Hexatriacontane (C36)	19.532	1618867	19.677 ug/ml
21) T n-Octatriacontane (C38)	20.238	1556761	19.639 ug/ml
22) T n-Tetracontane (C40)	21.063	1576972	19.553 ug/ml

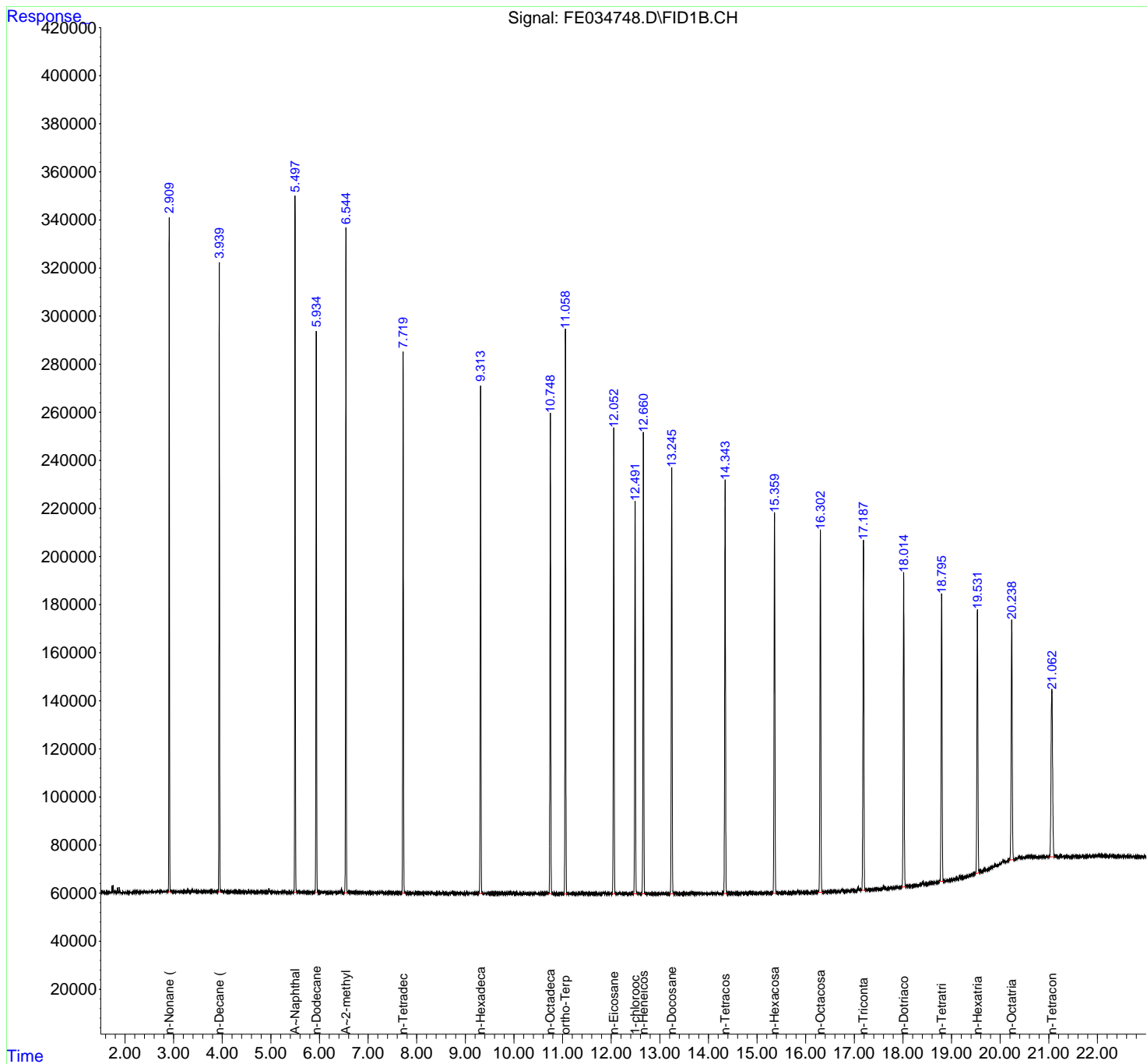
(f)=RT Delta > 1/2 Window

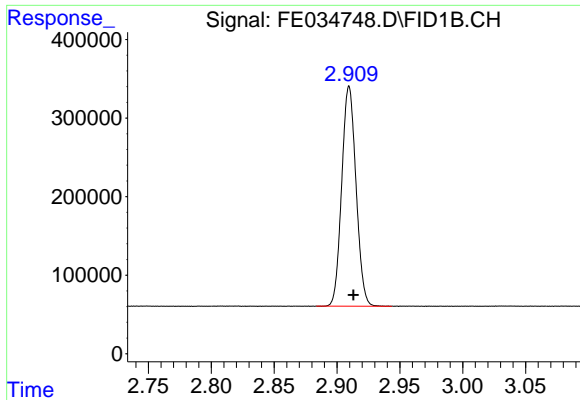
(m)=manual int.

Data Path : Z:\pestpcbsrv\HPCHEM1\FID_E\Data\FE012822AL\
 Data File : FE034748.D
 Signal(s) : FID1B.CH
 Acq On : 29 Jan 2022 2:45
 Operator : AJ\MA
 Sample : 20 PPM ALIPHATIC HC STD
 Misc :
 ALS Vial : 4 Sample Multiplier: 1

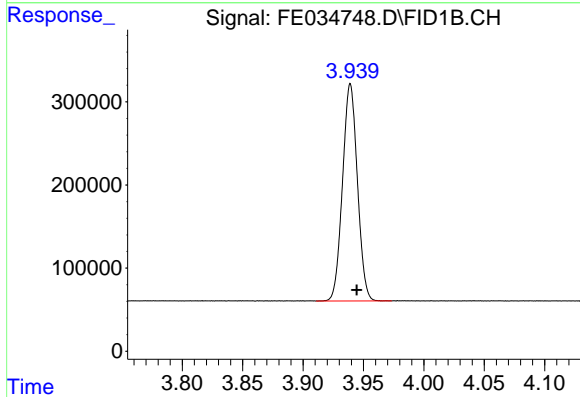
Integration File: autoint1.e
 Quant Time: Jan 29 03:08:58 2022
 Quant Method : Z:\pestpcbsrv\HPCHEM1\FID_E\methods\Aliphatic EPH 012822.M
 Quant Title : GC Extractables
 QLast Update : Sat Jan 29 00:52:24 2022
 Response via : Initial Calibration
 Integrator: ChemStation 6890 Scale Mode: Large solvent peaks clipped

Volume Inj. : 1 ul
 Signal Phase : Rxi-1ms
 Signal Info : 20M x 0.18mm x 0.18um

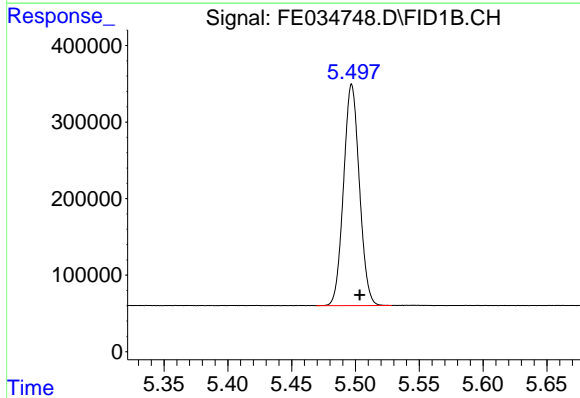




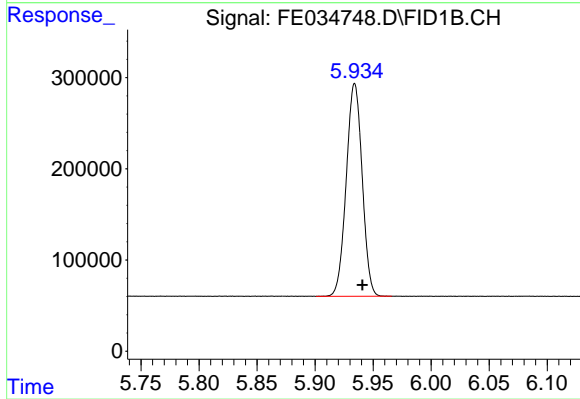
#1 n-Nonane (C9)
R.T.: 2.910 min
Delta R.T.: -0.003 min
Response: 2217179
Conc: 19.45 ug/ml



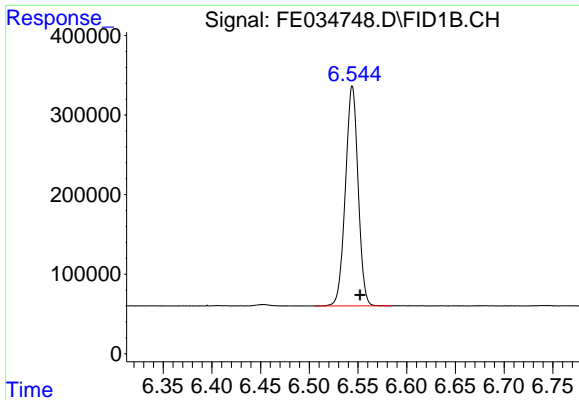
#2 n-Decane (C10)
R.T.: 3.939 min
Delta R.T.: -0.005 min
Response: 2239405
Conc: 19.47 ug/ml



#3 A~Naphthalene (C11.7)
R.T.: 5.497 min
Delta R.T.: -0.006 min
Response: 2497729
Conc: 19.46 ug/ml

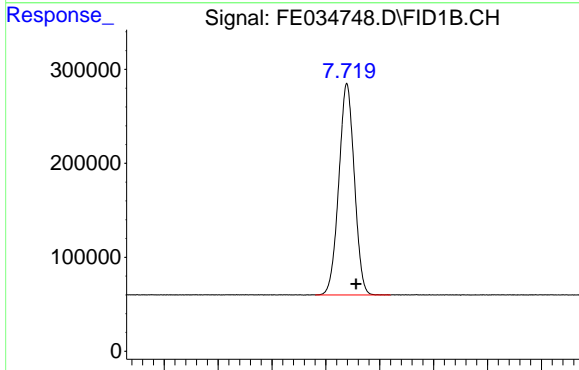


#4 n-Dodecane (C12)
R.T.: 5.934 min
Delta R.T.: -0.007 min
Response: 2228709
Conc: 19.42 ug/ml



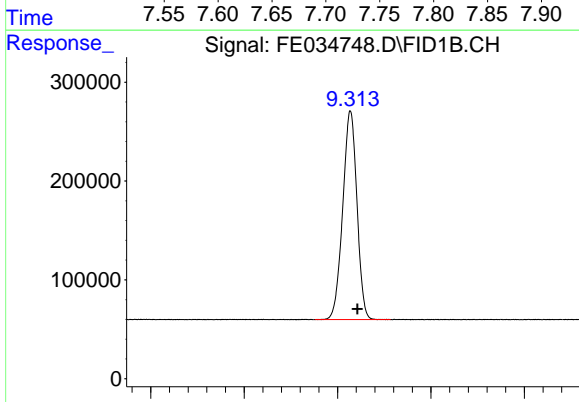
#5 A~2-methylnaphthalene (C12.89)

R.T.: 6.544 min
Delta R.T.: -0.008 min
Response: 2511363
Conc: 19.49 ug/ml



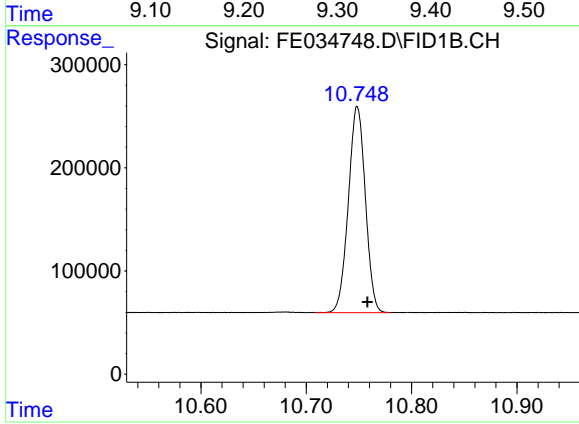
#6 n-Tetradecane (C14)

R.T.: 7.720 min
Delta R.T.: -0.008 min
Response: 2249799
Conc: 19.45 ug/ml



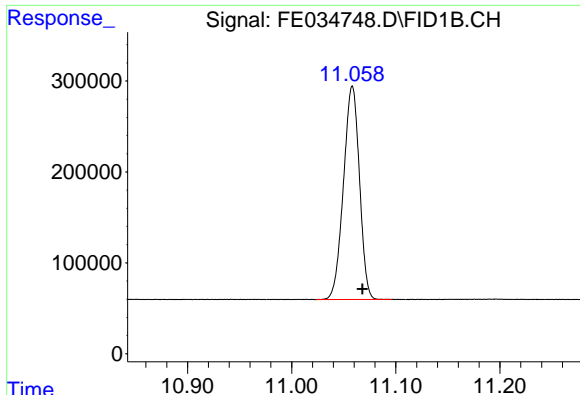
#7 n-Hexadecane (C16)

R.T.: 9.314 min
Delta R.T.: -0.008 min
Response: 2231381
Conc: 19.47 ug/ml



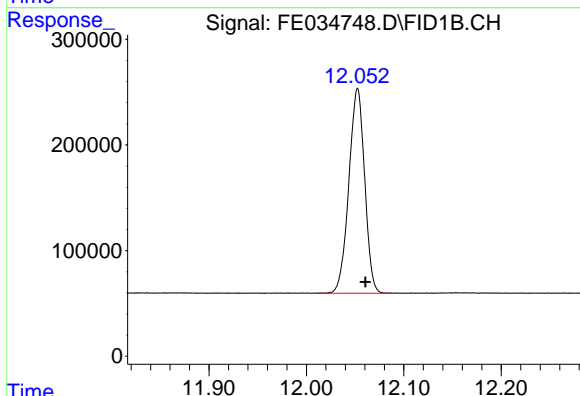
#8 n-Octadecane (C18)

R.T.: 10.749 min
Delta R.T.: -0.010 min
Response: 2242289
Conc: 19.46 ug/ml



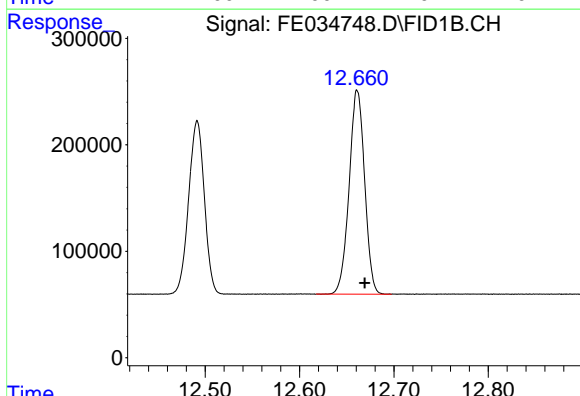
#9 ortho-Terphenyl (SURR)

R.T.: 11.058 min
 Delta R.T.: -0.010 min
 Response: 2507267
 Conc: 19.54 ug/ml



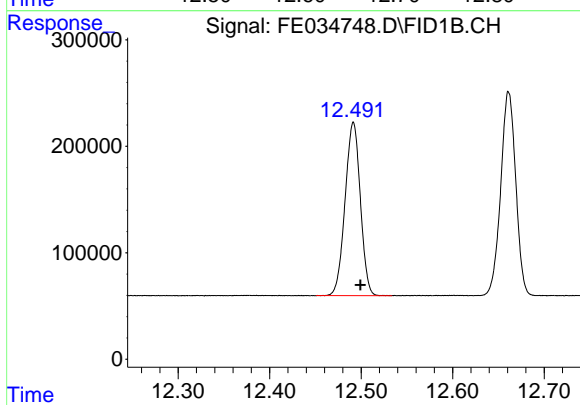
#10 n-Eicosane (C20)

R.T.: 12.053 min
 Delta R.T.: -0.008 min
 Response: 2185360
 Conc: 19.53 ug/ml



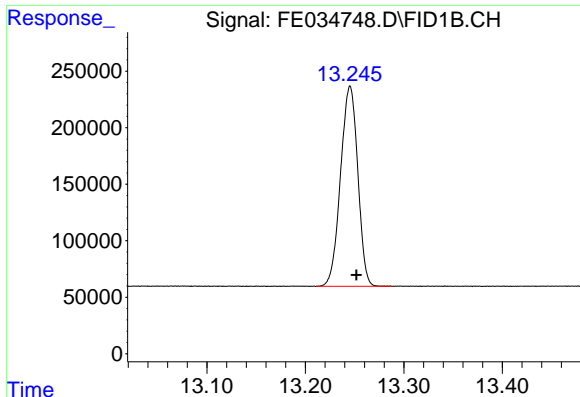
#11 n-Heneicosane (C21)

R.T.: 12.661 min
 Delta R.T.: -0.008 min
 Response: 2189202
 Conc: 19.54 ug/ml



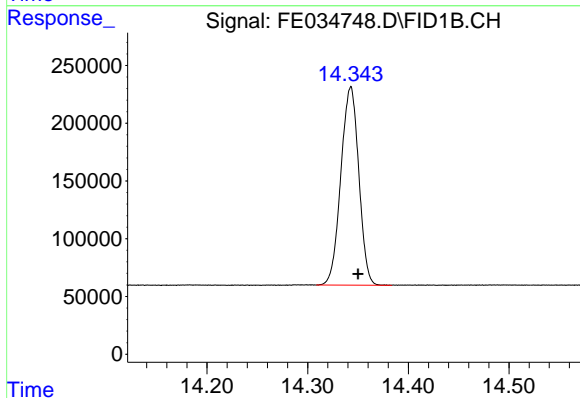
#12 1-chlorooctadecane (SURR)

R.T.: 12.492 min
 Delta R.T.: -0.007 min
 Response: 1885934
 Conc: 19.54 ug/ml



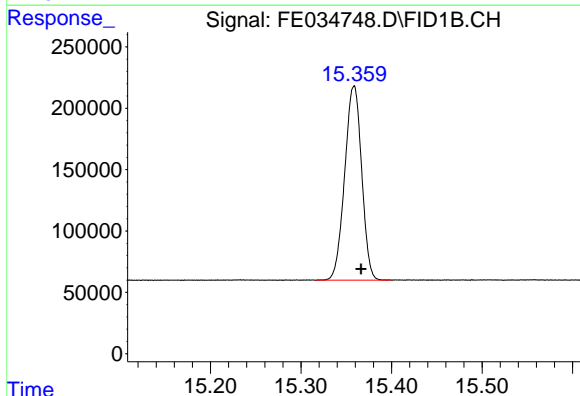
#13 n-Docosane (C22)

R.T.: 13.245 min
Delta R.T.: -0.006 min
Response: 2153998
Conc: 19.55 ug/ml



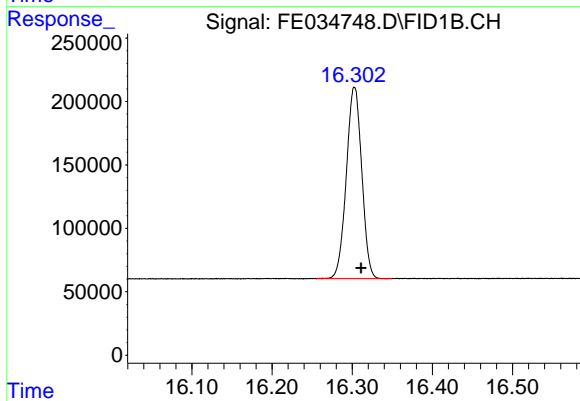
#14 n-Tetracosane (C24)

R.T.: 14.343 min
Delta R.T.: -0.007 min
Response: 2125384
Conc: 19.62 ug/ml



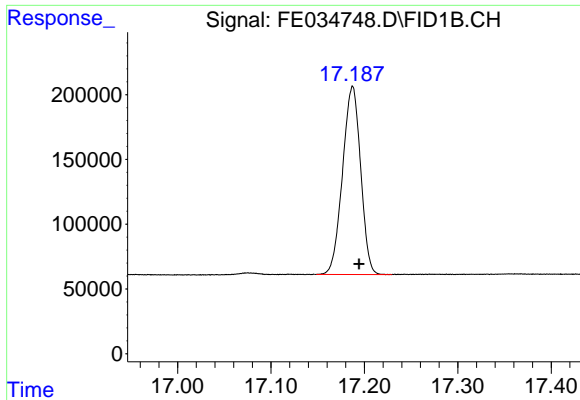
#15 n-Hexacosane (C26)

R.T.: 15.359 min
Delta R.T.: -0.008 min
Response: 2061962
Conc: 19.71 ug/ml

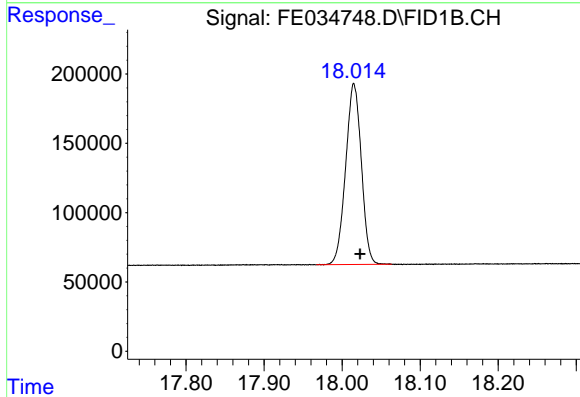


#16 n-Octacosane (C28)

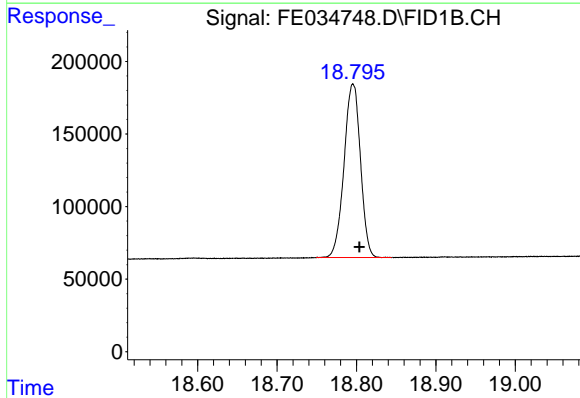
R.T.: 16.303 min
Delta R.T.: -0.008 min
Response: 2016540
Conc: 19.76 ug/ml



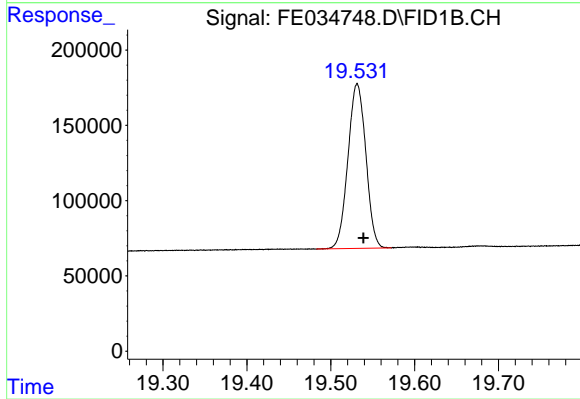
#17 n-Tricontane (C30)
R.T.: 17.187 min
Delta R.T.: -0.007 min
Response: 1955106
Conc: 19.78 ug/ml



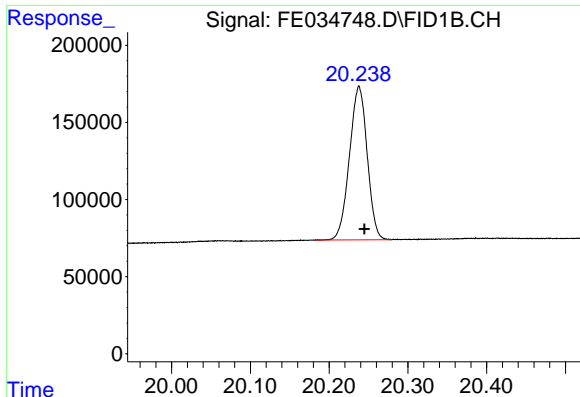
#18 n-Dotriacontane (C32)
R.T.: 18.015 min
Delta R.T.: -0.008 min
Response: 1820564
Conc: 19.82 ug/ml



#19 n-Tetratriacontane (C34)
R.T.: 18.796 min
Delta R.T.: -0.008 min
Response: 1717901
Conc: 19.72 ug/ml

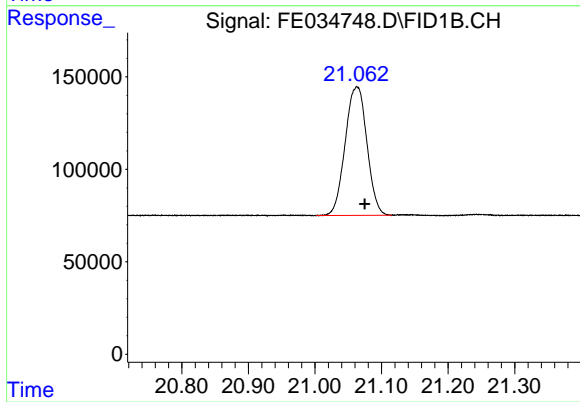


#20 n-Hexatriacontane (C36)
R.T.: 19.532 min
Delta R.T.: -0.007 min
Response: 1618867
Conc: 19.68 ug/ml



#21 n-Octatriacontane (C38)

R.T.: 20.238 min
Delta R.T.: -0.007 min
Response: 1556761
Conc: 19.64 ug/ml



#22 n-Tetracontane (C40)

R.T.: 21.063 min
Delta R.T.: -0.011 min
Response: 1576972
Conc: 19.55 ug/ml