

Data Path : Z:\pestpcbsrv\HPCHEM1\FID_E\Data\FE012925AL\
 Data File : FE052118.D
 Signal(s) : FID1B.ch
 Acq On : 29 Jan 2025 10:37
 Operator : YP\AJ
 Sample : 20 PPM ALIPHATIC HC STD
 Misc :
 ALS Vial : 2 Sample Multiplier: 1

Instrument :
 FID_E
ClientSampleId :
 20 PPM ALIPHATIC HC STD

Manual Integrations
APPROVED

Reviewed By :Yogesh Patel 01/30/2025
 Supervised By :Ankita Jodhani 01/30/2025

Integration File: autoint1.e
 Quant Time: Jan 30 01:24:44 2025
 Quant Method : Z:\pestpcbsrv\HPCHEM1\FID_E\methods\Aliphatic EPH 011625.M
 Quant Title : GC Extractables
 QLast Update : Thu Jan 16 16:05:07 2025
 Response via : Initial Calibration
 Integrator: ChemStation

Volume Inj. : 1 ul
 Signal Phase : Rxi-1ms
 Signal Info : 20M x 0.18mm x 0.18um

Compound	R.T.	Response	Conc Units

System Monitoring Compounds			
9) S ortho-Terphenyl (SURR)	12.196	2892222	20.236 ug/ml
Spiked Amount	50.000	Recovery	= 40.47%
12) S 1-chlorooctadecane (S...	13.611	2229755	19.437 ug/ml
Spiked Amount	50.000	Recovery	= 38.87%
Target Compounds			
1) T n-Nonane (C9)	3.676	2089114	19.595 ug/ml
2) T n-Decane (C10)	4.903	2259978	20.643 ug/ml
3) T A~Naphthalene (C11.7)	6.597	2566132	21.118 ug/ml
4) T n-Dodecane (C12)	7.031	2378769	21.076 ug/ml
5) T A~2-methylnaphthalene...	7.677	2550732	21.366 ug/ml
6) T n-Tetradecane (C14)	8.838	2460628	21.156 ug/ml
7) T n-Hexadecane (C16)	10.431	2619540	20.770 ug/ml
8) T n-Octadecane (C18)	11.864	2688376	20.319 ug/ml
10) T n-Eicosane (C20)	13.165	2608421	19.897 ug/ml
11) T n-Heneicosane (C21)	13.774	2559738	19.666 ug/ml
13) T n-Docosane (C22)	14.358	2571863	19.597 ug/ml
14) T n-Tetracosane (C24)	15.454	2589729	19.496 ug/mlm
15) T n-Hexacosane (C26)	16.471	2561381	19.377 ug/ml
16) T n-Octacosane (C28)	17.418	2607881	19.759 ug/ml
17) T n-Tricontane (C30)	18.303	2792992	20.485 ug/ml
18) T n-Dotriacontane (C32)	19.134	2732491	20.850 ug/ml
19) T n-Tetratriacontane (C34)	19.915	2325433	20.655 ug/mlm
20) T n-Hexatriacontane (C36)	20.653	1933716	20.359 ug/ml
21) T n-Octatriacontane (C38)	21.438	1763982	20.421 ug/mlm
22) T n-Tetracontane (C40)	22.437	1724821	20.930 ug/ml

(f)=RT Delta > 1/2 Window

(m)=manual int.

Data Path : Z:\pestpcbsrv\HPCHEM1\FID_E\Data\FE012925AL\
 Data File : FE052118.D
 Signal(s) : FID1B.ch
 Acq On : 29 Jan 2025 10:37
 Operator : YP\AJ
 Sample : 20 PPM ALIPHATIC HC STD
 Misc :
 ALS Vial : 2 Sample Multiplier: 1

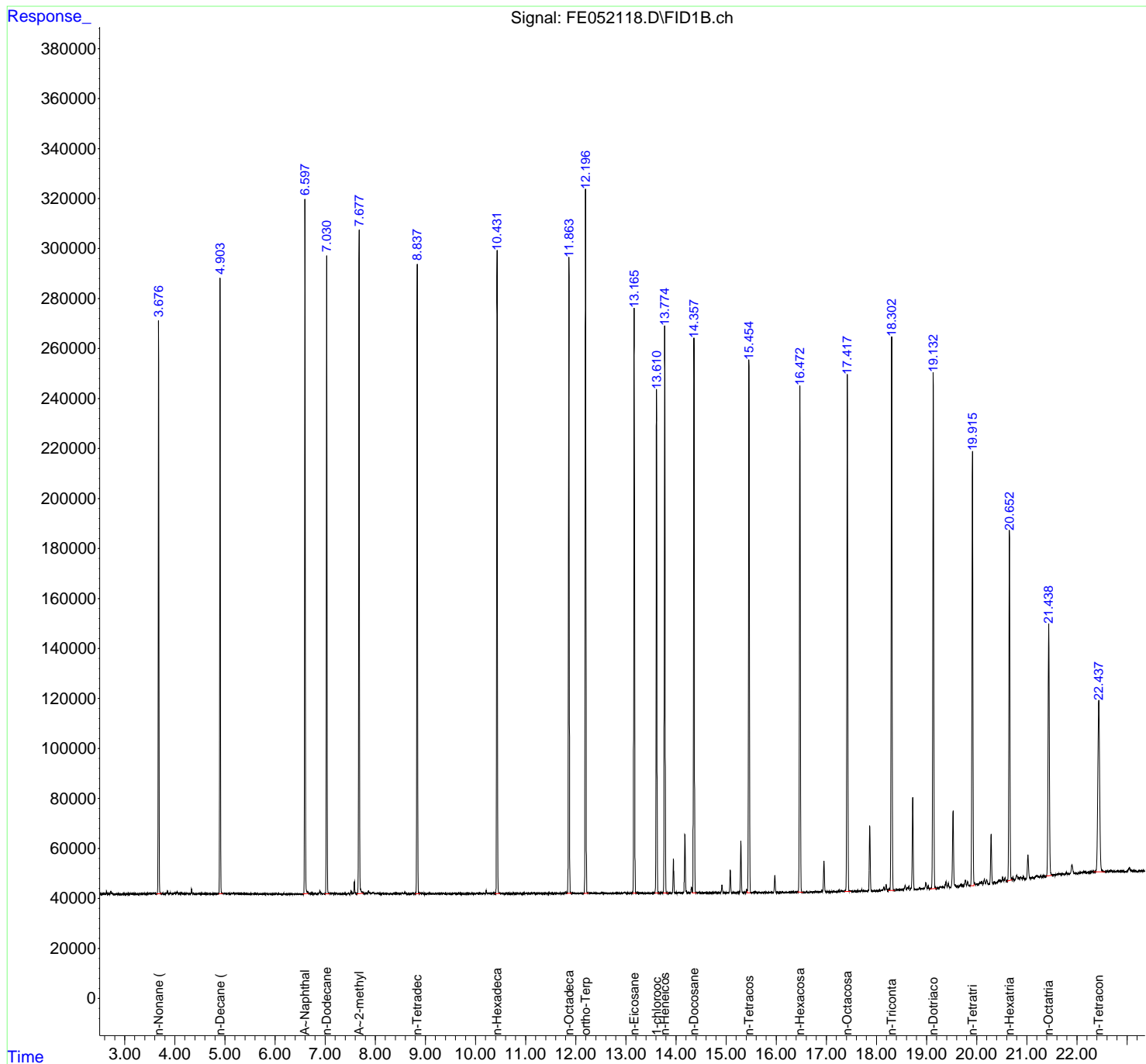
Instrument :
 FID_E
ClientSampleId :
 20 PPM ALIPHATIC HC STD

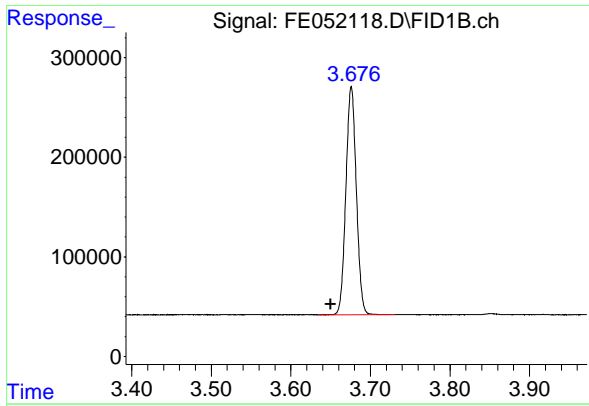
Manual Integrations
APPROVED

Reviewed By :Yogesh Patel 01/30/2025
 Supervised By :Ankita Jodhani 01/30/2025

Integration File: autoint1.e
 Quant Time: Jan 30 01:24:44 2025
 Quant Method : Z:\pestpcbsrv\HPCHEM1\FID_E\methods\Aliphatic EPH 011625.
 Quant Title : GC Extractables
 QLast Update : Thu Jan 16 16:05:07 2025
 Response via : Initial Calibration
 Integrator: ChemStation

Volume Inj. : 1 ul
 Signal Phase : Rxi-1ms
 Signal Info : 20M x 0.18mm x 0.18um





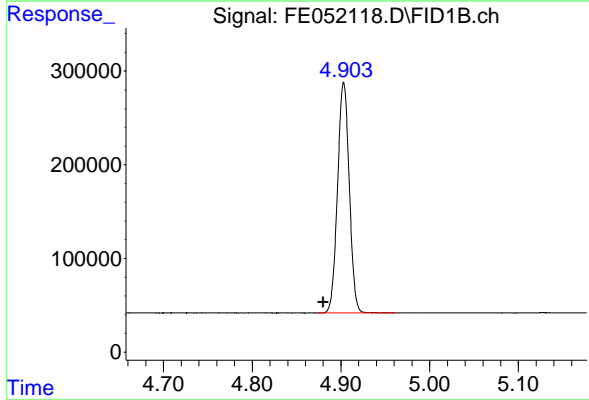
#1 n-Nonane (C9)

R.T.: 3.676 min
 Delta R.T.: 0.026 min
 Response: 2089114
 Conc: 19.60 ug/ml

Instrument : FID_E
 ClientSampleId : 20 PPM ALIPHATIC HC STD

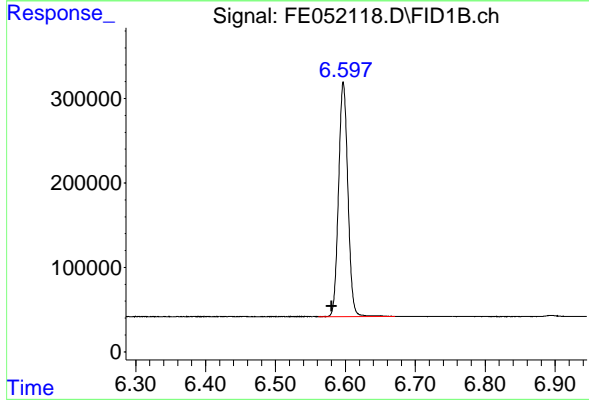
Manual Integrations
 APPROVED

Reviewed By :Yogesh Patel 01/30/2025
 Supervised By :Ankita Jodhani 01/30/2025



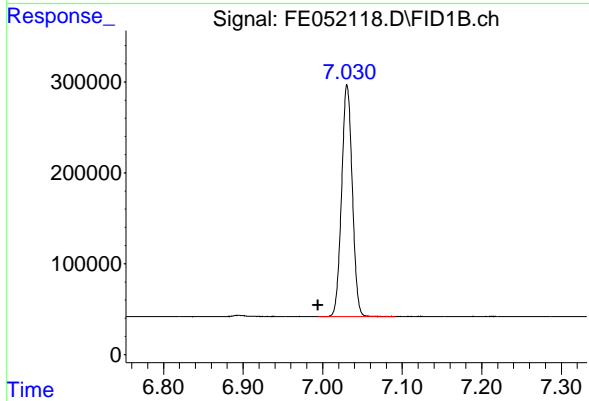
#2 n-Decane (C10)

R.T.: 4.903 min
 Delta R.T.: 0.023 min
 Response: 2259978
 Conc: 20.64 ug/ml



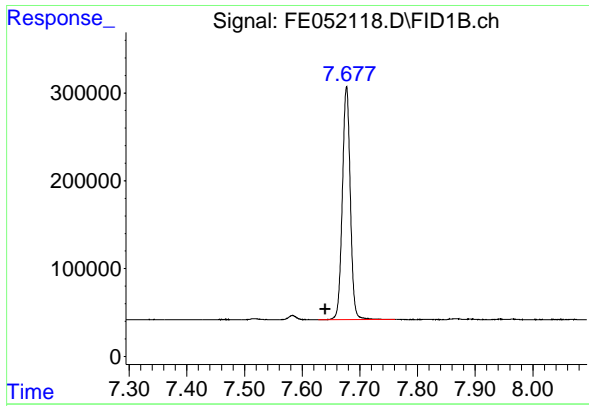
#3 A~Naphthalene (C11.7)

R.T.: 6.597 min
 Delta R.T.: 0.017 min
 Response: 2566132
 Conc: 21.12 ug/ml



#4 n-Dodecane (C12)

R.T.: 7.031 min
 Delta R.T.: 0.037 min
 Response: 2378769
 Conc: 21.08 ug/ml



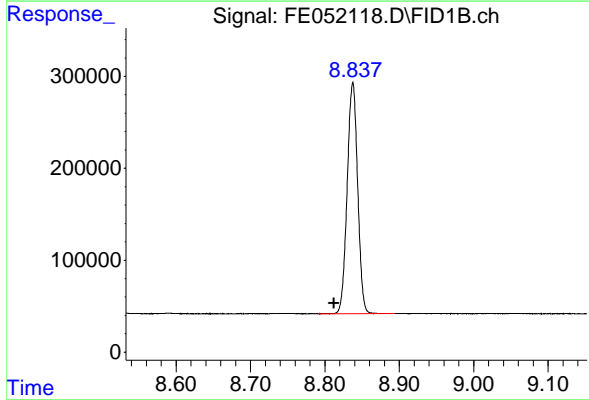
#5 A~2-methylnaphthalene (C12.89)

R.T.: 7.677 min
 Delta R.T.: 0.036 min
 Response: 2550732
 Conc: 21.37 ug/ml

Instrument : FID_E
 ClientSampleId : 20 PPM ALIPHATIC HC STD

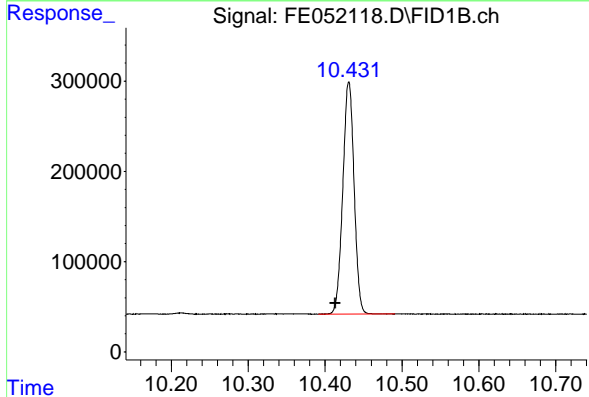
Manual Integrations
 APPROVED

Reviewed By :Yogesh Patel 01/30/2025
 Supervised By :Ankita Jodhani 01/30/2025



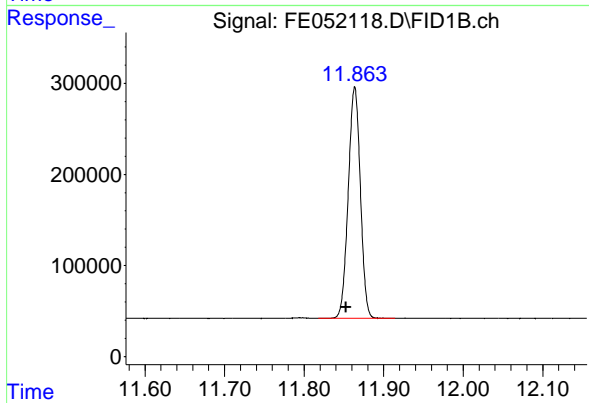
#6 n-Tetradecane (C14)

R.T.: 8.838 min
 Delta R.T.: 0.025 min
 Response: 2460628
 Conc: 21.16 ug/ml



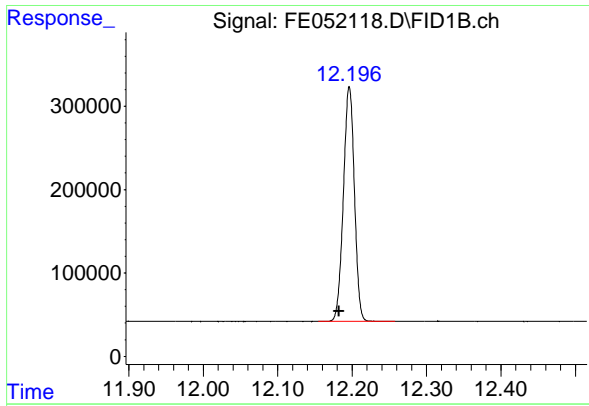
#7 n-Hexadecane (C16)

R.T.: 10.431 min
 Delta R.T.: 0.017 min
 Response: 2619540
 Conc: 20.77 ug/ml



#8 n-Octadecane (C18)

R.T.: 11.864 min
 Delta R.T.: 0.011 min
 Response: 2688376
 Conc: 20.32 ug/ml



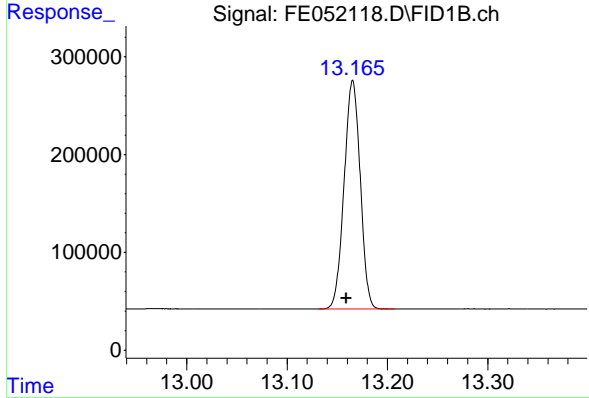
#9 ortho-Terphenyl (SURR)

R.T.: 12.196 min
 Delta R.T.: 0.014 min
 Response: 2892222
 Conc: 20.24 ug/ml

Instrument : FID_E
 Client Sample Id : 20 PPM ALIPHATIC HC STD

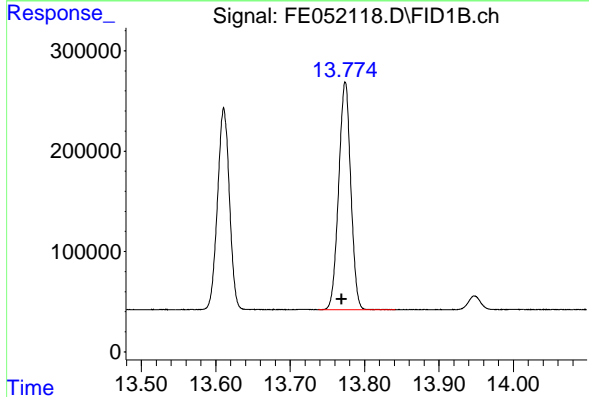
Manual Integrations
 APPROVED

Reviewed By :Yogesh Patel 01/30/2025
 Supervised By :Ankita Jodhani 01/30/2025



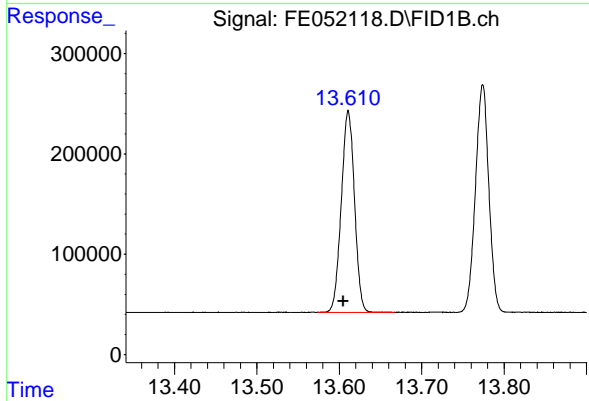
#10 n-Eicosane (C20)

R.T.: 13.165 min
 Delta R.T.: 0.007 min
 Response: 2608421
 Conc: 19.90 ug/ml



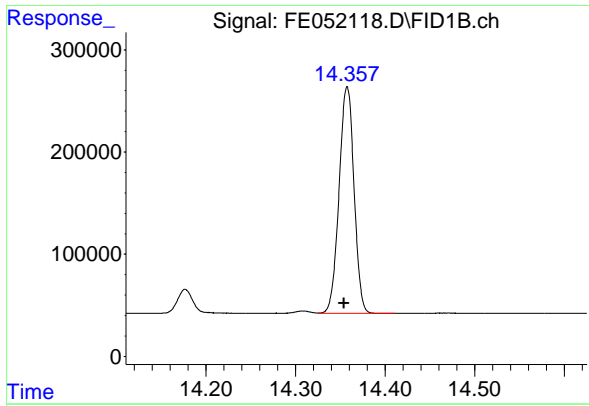
#11 n-Heneicosane (C21)

R.T.: 13.774 min
 Delta R.T.: 0.004 min
 Response: 2559738
 Conc: 19.67 ug/ml



#12 1-chlorooctadecane (SURR)

R.T.: 13.611 min
 Delta R.T.: 0.006 min
 Response: 2229755
 Conc: 19.44 ug/ml



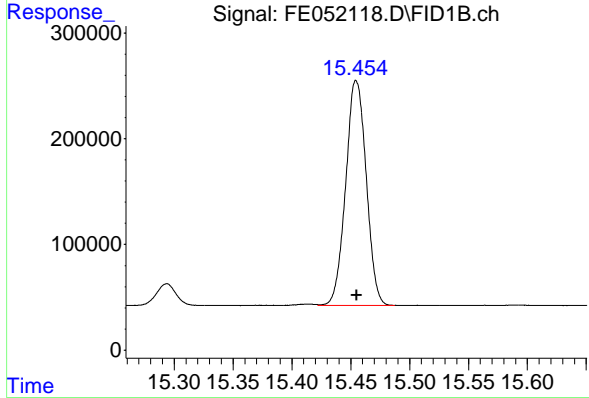
#13 n-Docosane (C22)

R.T.: 14.358 min
 Delta R.T.: 0.003 min
 Response: 2571863
 Conc: 19.60 ug/ml

Instrument : FID_E
 Client Sample Id : 20 PPM ALIPHATIC HC STD

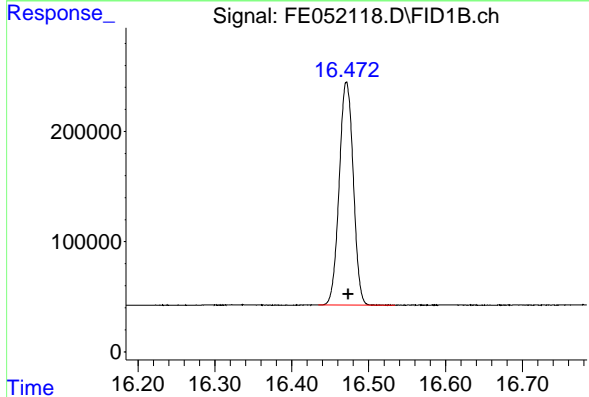
Manual Integrations
 APPROVED

Reviewed By :Yogesh Patel 01/30/2025
 Supervised By :Ankita Jodhani 01/30/2025



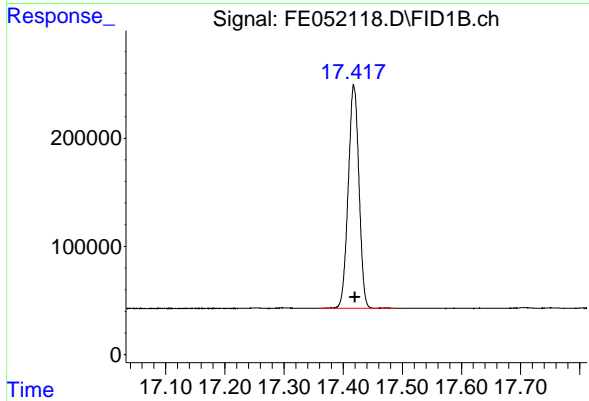
#14 n-Tetracosane (C24)

R.T.: 15.454 min
 Delta R.T.: -0.001 min
 Response: 2589729
 Conc: 19.50 ug/ml m



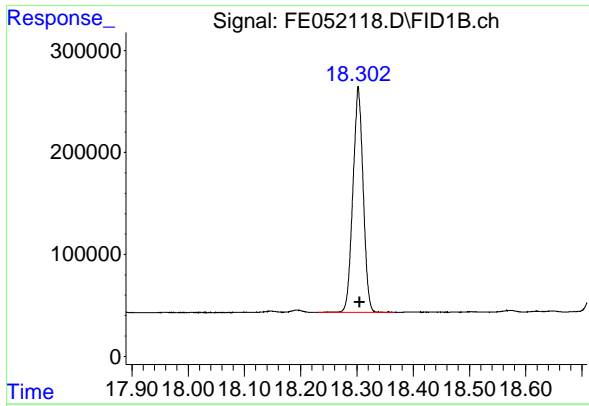
#15 n-Hexacosane (C26)

R.T.: 16.471 min
 Delta R.T.: -0.003 min
 Response: 2561381
 Conc: 19.38 ug/ml



#16 n-Octacosane (C28)

R.T.: 17.418 min
 Delta R.T.: -0.002 min
 Response: 2607881
 Conc: 19.76 ug/ml



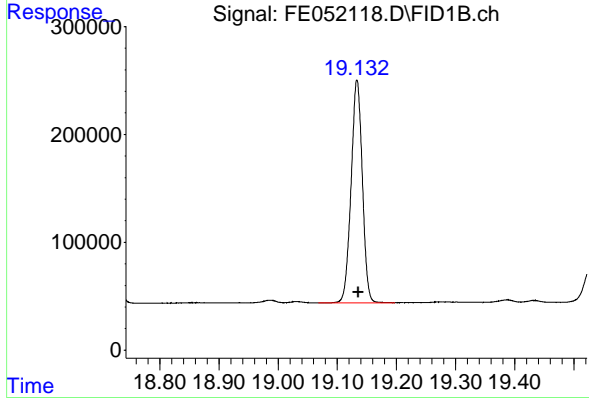
#17 n-Tricontane (C30)

R.T.: 18.303 min
 Delta R.T.: -0.002 min
 Response: 2792992
 Conc: 20.49 ug/ml

Instrument : FID_E
 Client Sample Id : 20 PPM ALIPHATIC HC STD

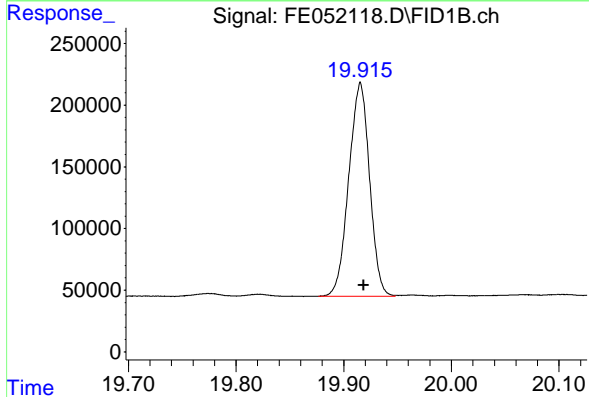
Manual Integrations
 APPROVED

Reviewed By :Yogesh Patel 01/30/2025
 Supervised By :Ankita Jodhani 01/30/2025



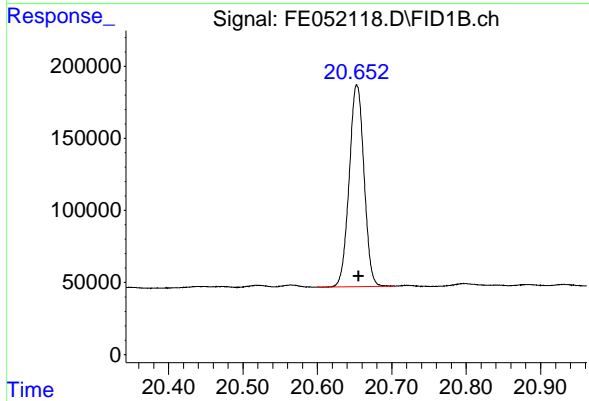
#18 n-Dotriacontane (C32)

R.T.: 19.134 min
 Delta R.T.: -0.002 min
 Response: 2732491
 Conc: 20.85 ug/ml



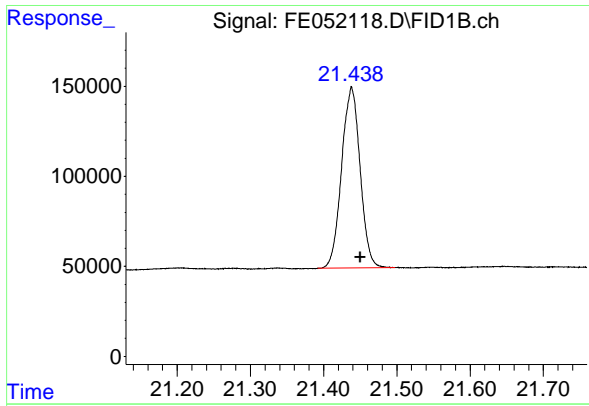
#19 n-Tetracontane (C34)

R.T.: 19.915 min
 Delta R.T.: -0.003 min
 Response: 2325433
 Conc: 20.66 ug/ml m



#20 n-Hexatriacontane (C36)

R.T.: 20.653 min
 Delta R.T.: -0.003 min
 Response: 1933716
 Conc: 20.36 ug/ml



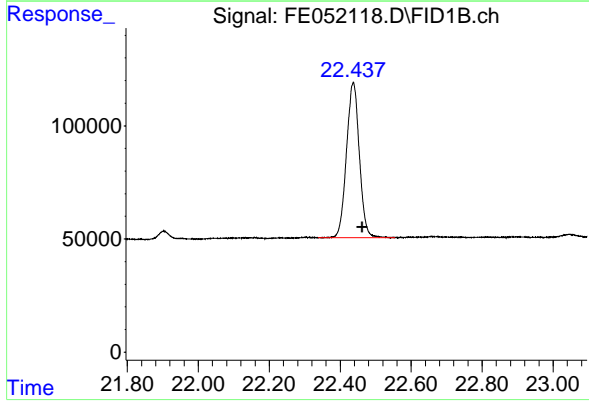
#21 n-Octatriacontane (C38)

R.T.: 21.438 min
 Delta R.T.: -0.013 min
 Response: 1763982
 Conc: 20.42 ug/ml

Instrument : FID_E
 ClientSampleId : 20 PPM ALIPHATIC HC STD

Manual Integrations
 APPROVED

Reviewed By :Yogesh Patel 01/30/2025
 Supervised By :Ankita Jodhani 01/30/2025



#22 n-Tetracontane (C40)

R.T.: 22.437 min
 Delta R.T.: -0.026 min
 Response: 1724821
 Conc: 20.93 ug/ml