

Data Path : Z:\pestpcbsrv\HPCHEM1\FID\_E\Data\FE013122AL\  
 Data File : FE034781.D  
 Signal(s) : FID1B.CH  
 Acq On : 01 Feb 2022 8:29  
 Operator : AJ\MA  
 Sample : I.BLK  
 Misc :  
 ALS Vial : 1 Sample Multiplier: 1

Integration File: autoint1.e  
 Quant Time: Feb 01 08:50:11 2022  
 Quant Method : Z:\pestpcbsrv\HPCHEM1\FID\_E\methods\Aliphatic EPH 012822.M  
 Quant Title : GC Extractables  
 QLast Update : Sat Jan 29 00:52:24 2022  
 Response via : Initial Calibration  
 Integrator: ChemStation 6890 Scale Mode: Large solvent peaks clipped

Volume Inj. : 1 ul  
 Signal Phase : Rxi-1ms  
 Signal Info : 20M x 0.18mm x 0.18um

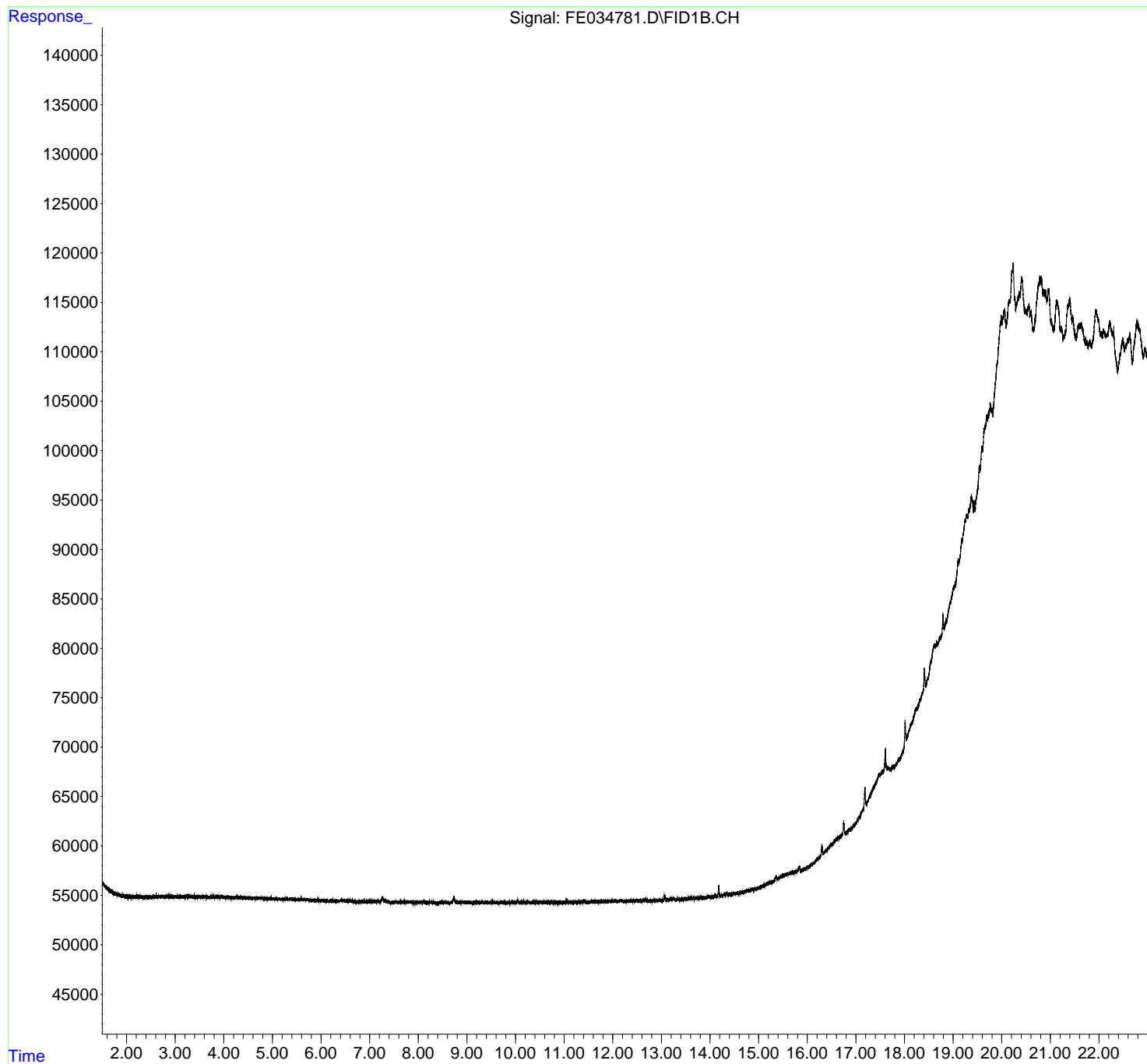
Compound	R.T.	Response	Conc Units
-----			
System Monitoring Compounds			
Target Compounds			
-----			

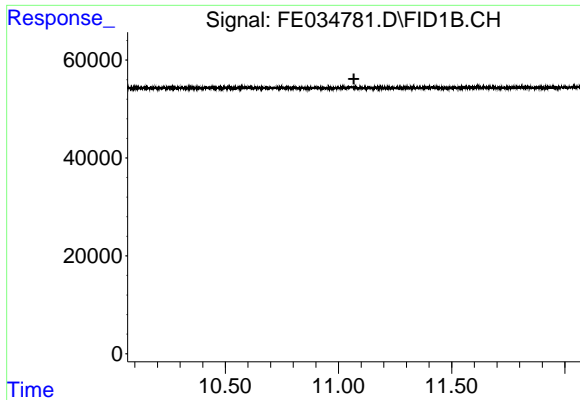
(f)=RT Delta > 1/2 Window (m)=manual int.

Data Path : Z:\pestpcbsrv\HPCHEM1\FID\_E\Data\FE013122AL\  
Data File : FE034781.D  
Signal(s) : FID1B.CH  
Acq On : 01 Feb 2022 8:29  
Operator : AJ\MA  
Sample : I.BLK  
Misc :  
ALS Vial : 1 Sample Multiplier: 1

Integration File: autoint1.e  
Quant Time: Feb 01 08:50:11 2022  
Quant Method : Z:\pestpcbsrv\HPCHEM1\FID\_E\methods\Aliphatic EPH 012822.M  
Quant Title : GC Extractables  
QLast Update : Sat Jan 29 00:52:24 2022  
Response via : Initial Calibration  
Integrator: ChemStation 6890 Scale Mode: Large solvent peaks clipped

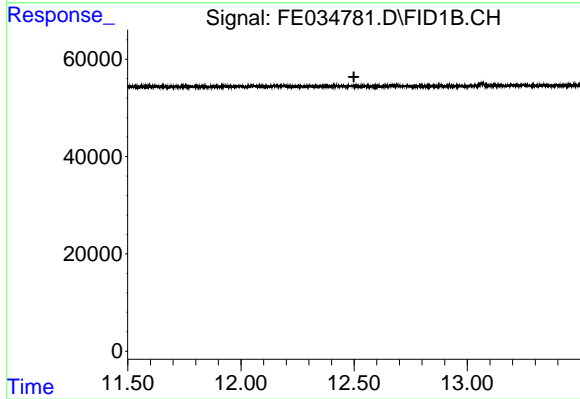
Volume Inj. : 1 ul  
Signal Phase : Rxi-1ms  
Signal Info : 20M x 0.18mm x 0.18um





#9 ortho-Terphenyl (SURR)

R.T.: 0.000 min  
Exp R.T. : 11.068 min  
Response: 0  
Conc: N.D.



#12 1-chlorooctadecane (SURR)

R.T.: 0.000 min  
Exp R.T. : 12.499 min  
Response: 0  
Conc: N.D.