

Data Path : Z:\pestpcbsrv\HPCHEM1\FID\_E\Data\FE020122AL\  
 Data File : FE034802.D  
 Signal(s) : FID1B.CH  
 Acq On : 01 Feb 2022 22:52  
 Operator : AJ\MA  
 Sample : N1335-12  
 Misc :  
 ALS Vial : 16 Sample Multiplier: 1

Integration File: autoint1.e  
 Quant Time: Feb 02 01:20:36 2022  
 Quant Method : Z:\pestpcbsrv\HPCHEM1\FID\_E\methods\Aliphatic EPH 012822.M  
 Quant Title : GC Extractables  
 QLast Update : Sat Jan 29 00:52:24 2022  
 Response via : Initial Calibration  
 Integrator: ChemStation 6890 Scale Mode: Large solvent peaks clipped

Volume Inj. : 1 ul  
 Signal Phase : Rxi-1ms  
 Signal Info : 20M x 0.18mm x 0.18um

Compound	R.T.	Response	Conc Units
-----			
System Monitoring Compounds			
9) S ortho-Terphenyl (SURR)	11.058	4167476	32.478 ug/ml
Spiked Amount	50.000	Recovery	= 64.96%
12) S 1-chlorooctadecane (S...	12.491	3226723	33.436 ug/ml
Spiked Amount	50.000	Recovery	= 66.87%
Target Compounds			
3) T A~Naphthalene (C11.7)	5.564f	90982	<MDL ug/ml
-----			

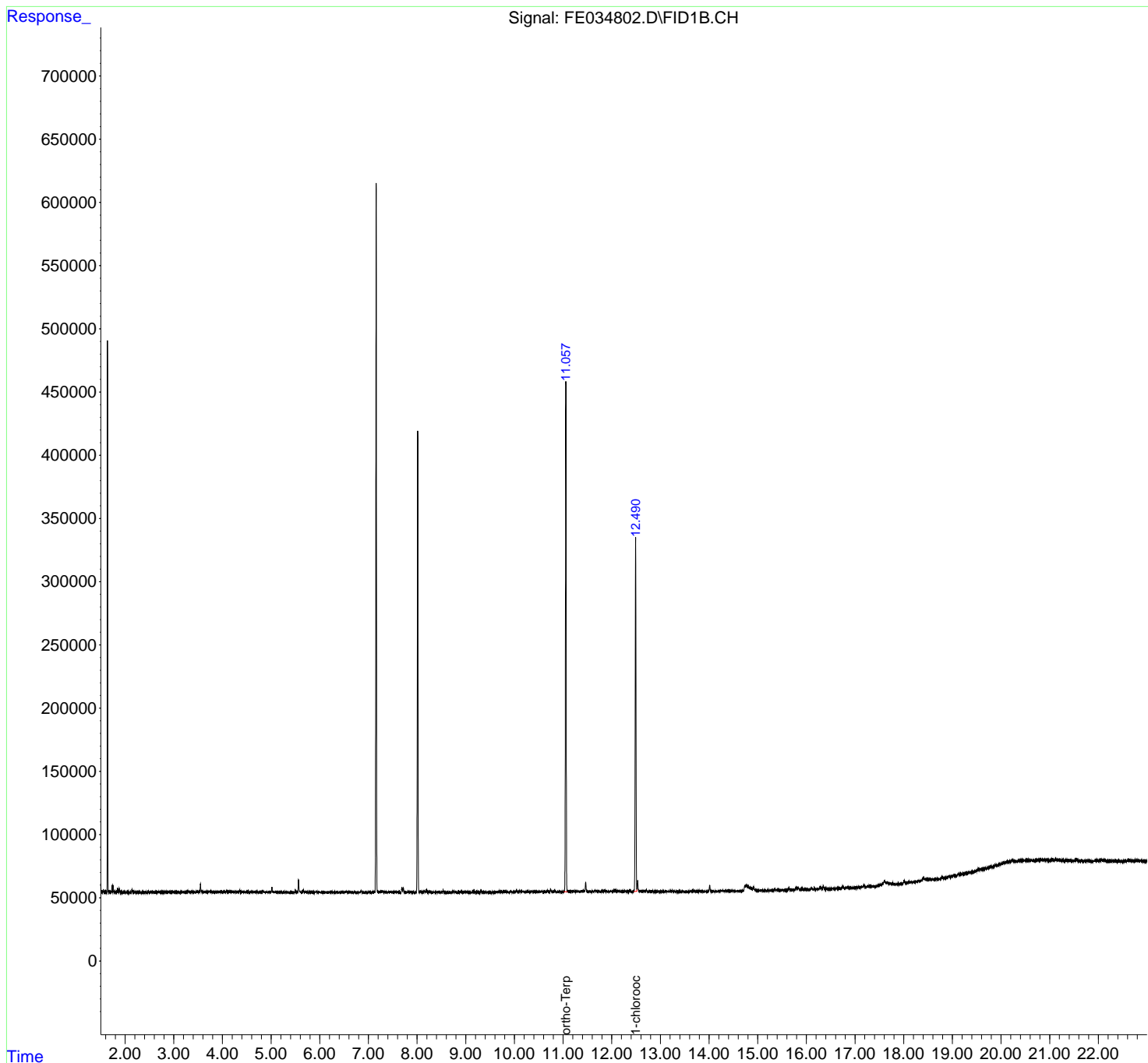
(f)=RT Delta > 1/2 Window

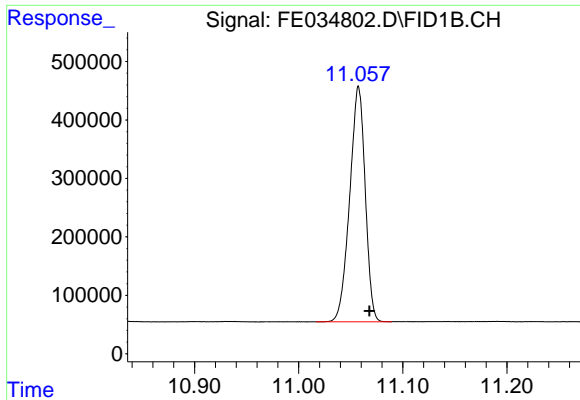
(m)=manual int.

Data Path : Z:\pestpcbsrv\HPCHEM1\FID\_E\Data\FE020122AL\  
Data File : FE034802.D  
Signal(s) : FID1B.CH  
Acq On : 01 Feb 2022 22:52  
Operator : AJ\MA  
Sample : N1335-12  
Misc :  
ALS Vial : 16 Sample Multiplier: 1

Integration File: autoint1.e  
Quant Time: Feb 02 01:20:36 2022  
Quant Method : Z:\pestpcbsrv\HPCHEM1\FID\_E\methods\Aliphatic EPH 012822.M  
Quant Title : GC Extractables  
QLast Update : Sat Jan 29 00:52:24 2022  
Response via : Initial Calibration  
Integrator: ChemStation 6890 Scale Mode: Large solvent peaks clipped

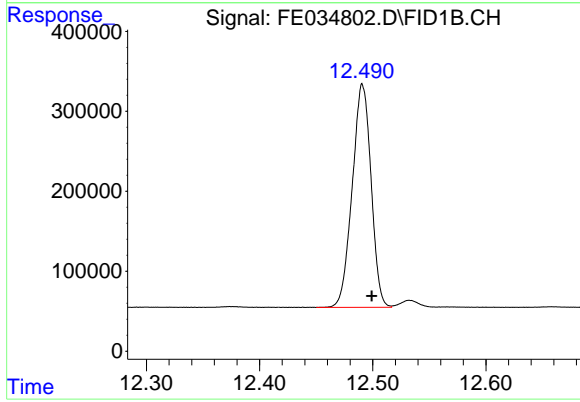
Volume Inj. : 1 ul  
Signal Phase : Rxi-1ms  
Signal Info : 20M x 0.18mm x 0.18um





#9 ortho-Terphenyl (SURR)

R.T.: 11.058 min  
Delta R.T.: -0.010 min  
Response: 4167476  
Conc: 32.48 ug/ml



#12 1-chlorooctadecane (SURR)

R.T.: 12.491 min  
Delta R.T.: -0.008 min  
Response: 3226723  
Conc: 33.44 ug/ml