

Data Path : Z:\pestpcbsrv\HPCHEM1\FID\_E\Data\FE020224AL\  
 Data File : FE046550.D  
 Signal(s) : FID1B.ch  
 Acq On : 02 Feb 2024 23:56  
 Operator : YP\AJ  
 Sample : P1307-07  
 Misc :  
 ALS Vial : 23 Sample Multiplier: 1

Integration File: autoint1.e  
 Quant Time: Feb 05 05:04:16 2024  
 Quant Method : Z:\pestpcbsrv\HPCHEM1\FID\_E\methods\Aliphatic EPH 012524.M  
 Quant Title : GC Extractables  
 QLast Update : Thu Jan 25 14:56:03 2024  
 Response via : Initial Calibration  
 Integrator: ChemStation

Volume Inj. : 1 ul  
 Signal Phase : Rxi-1ms  
 Signal Info : 20M x 0.18mm x 0.18um

Compound	R.T.	Response	Conc Units
-----			
System Monitoring Compounds			
9) S ortho-Terphenyl (SURR)	11.818	8148180	44.066 ug/ml
Spiked Amount	50.000	Recovery	= 88.13%
12) S 1-chlorooctadecane (S...	13.259	5156073	36.240 ug/ml
Spiked Amount	50.000	Recovery	= 72.48%
Target Compounds			
14) T n-Tetracosane (C24)	15.144	139007	0.842 ug/ml
16) T n-Octacosane (C28)	17.085	33785	0.215 ug/ml
17) T n-Tricontane (C30)	17.977	51940	0.332 ug/ml
18) T n-Dotriacontane (C32)	18.810	73781	0.488 ug/ml
19) T n-Tetratriacontane (C34)	19.597	36070	0.254 ug/ml
20) T n-Hexatriacontane (C36)	20.347	23109	0.168 ug/ml
-----			

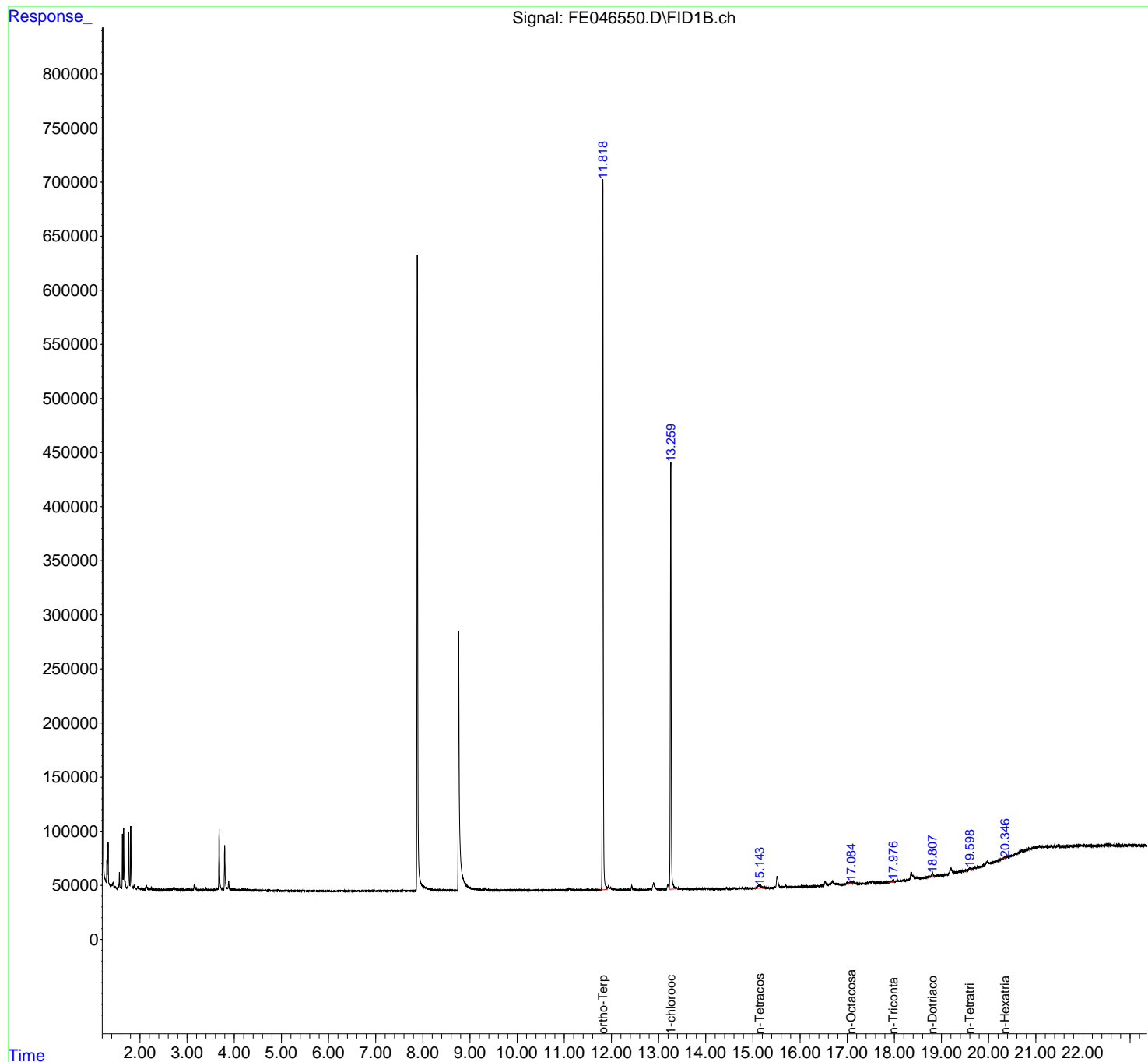
(f)=RT Delta > 1/2 Window

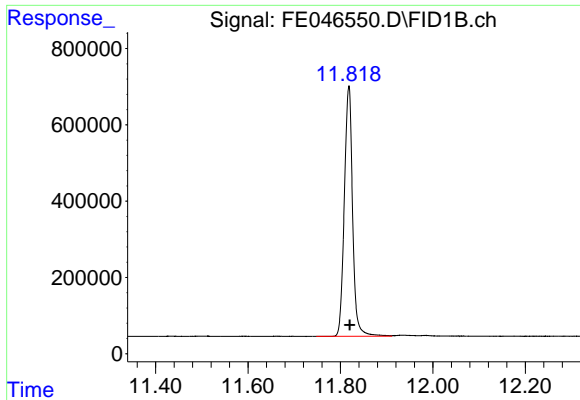
(m)=manual int.

Data Path : Z:\pestpcbsrv\HPCHEM1\FID\_E\Data\FE020224AL\  
 Data File : FE046550.D  
 Signal(s) : FID1B.ch  
 Acq On : 02 Feb 2024 23:56  
 Operator : YP\AJ  
 Sample : P1307-07  
 Misc :  
 ALS Vial : 23 Sample Multiplier: 1

Integration File: autoint1.e  
 Quant Time: Feb 05 05:04:16 2024  
 Quant Method : Z:\pestpcbsrv\HPCHEM1\FID\_E\methods\Aliphatic EPH 012524.M  
 Quant Title : GC Extractables  
 QLast Update : Thu Jan 25 14:56:03 2024  
 Response via : Initial Calibration  
 Integrator: ChemStation

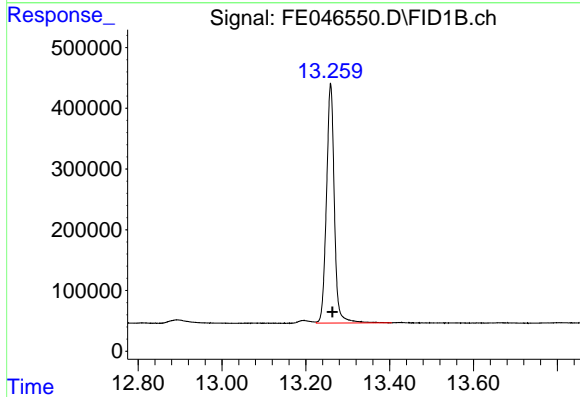
Volume Inj. : 1 ul  
 Signal Phase : Rxi-1ms  
 Signal Info : 20M x 0.18mm x 0.18um





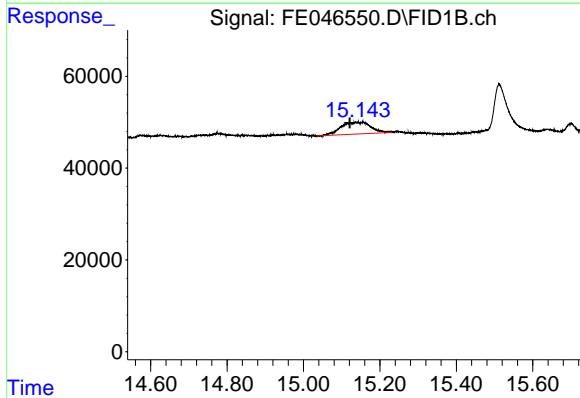
#9 ortho-Terphenyl (SURR)

R.T.: 11.818 min  
 Delta R.T.: -0.002 min  
 Response: 8148180  
 Conc: 44.07 ug/ml



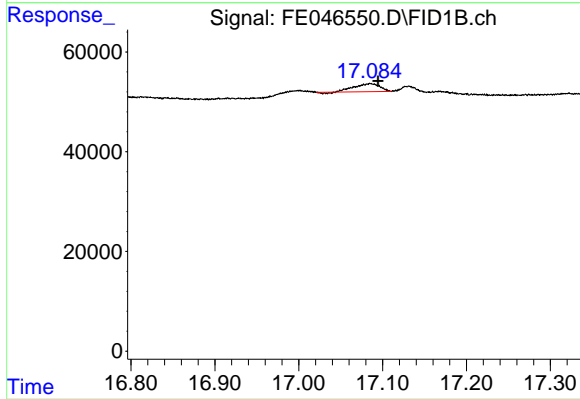
#12 1-chlorooctadecane (SURR)

R.T.: 13.259 min  
 Delta R.T.: -0.004 min  
 Response: 5156073  
 Conc: 36.24 ug/ml



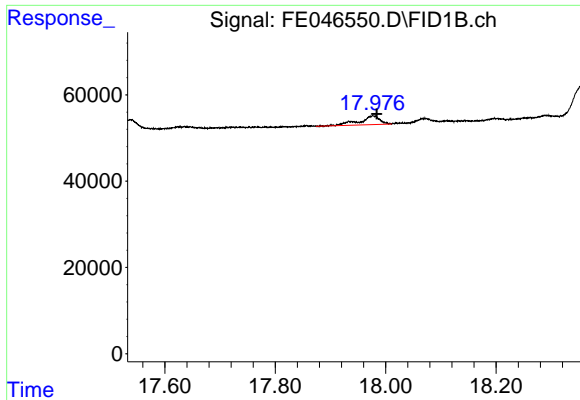
#14 n-Tetracosane (C24)

R.T.: 15.144 min  
 Delta R.T.: 0.022 min  
 Response: 139007  
 Conc: 0.84 ug/ml



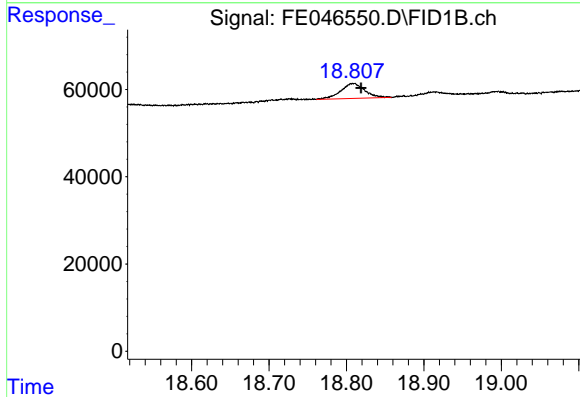
#16 n-Octacosane (C28)

R.T.: 17.085 min  
 Delta R.T.: -0.009 min  
 Response: 33785  
 Conc: 0.22 ug/ml



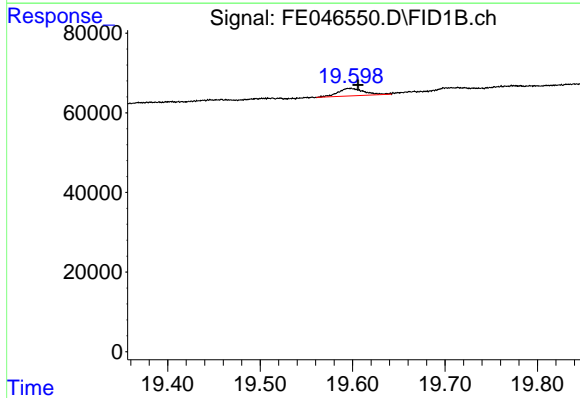
#17 n-Tricontane (C30)

R.T.: 17.977 min  
Delta R.T.: -0.007 min  
Response: 51940  
Conc: 0.33 ug/ml



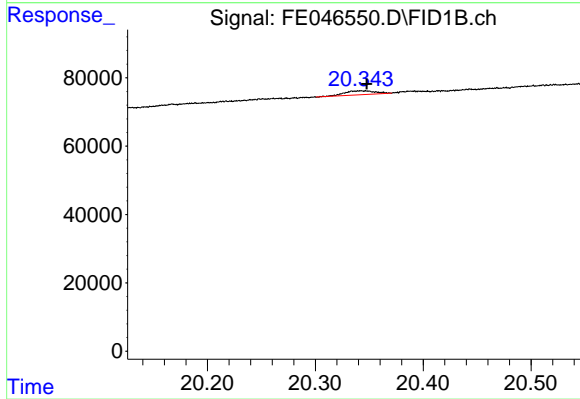
#18 n-Dotriacontane (C32)

R.T.: 18.810 min  
Delta R.T.: -0.009 min  
Response: 73781  
Conc: 0.49 ug/ml



#19 n-Tetratriacontane (C34)

R.T.: 19.597 min  
Delta R.T.: -0.009 min  
Response: 36070  
Conc: 0.25 ug/ml



#20 n-Hexatriacontane (C36)

R.T.: 20.347 min  
Delta R.T.: 0.000 min  
Response: 23109  
Conc: 0.17 ug/ml