

Data Path : Z:\pestpcbsrv\HPCHEM1\FID_E\Data\FE020224AL\
 Data File : FE046548.D
 Signal(s) : FID1B.ch
 Acq On : 02 Feb 2024 22:56
 Operator : YP\AJ
 Sample : P1307-05
 Misc :
 ALS Vial : 21 Sample Multiplier: 1

Integration File: sample.E
 Quant Time: Feb 05 05:03:37 2024
 Quant Method : Z:\pestpcbsrv\HPCHEM1\FID_E\methods\Aliphatic EPH 012524.M
 Quant Title : GC Extractables
 QLast Update : Thu Jan 25 14:56:03 2024
 Response via : Initial Calibration
 Integrator: ChemStation

Volume Inj. : 1 ul
 Signal Phase : Rxi-1ms
 Signal Info : 20M x 0.18mm x 0.18um

Compound	R.T.	Response	Conc Units

System Monitoring Compounds			
9) S ortho-Terphenyl (SURR)	11.818	6696130	36.213 ug/ml
Spiked Amount	50.000	Recovery	= 72.43%
12) S 1-chlorooctadecane (S...	13.259	6162935	43.317 ug/ml
Spiked Amount	50.000	Recovery	= 86.63%

Target Compounds

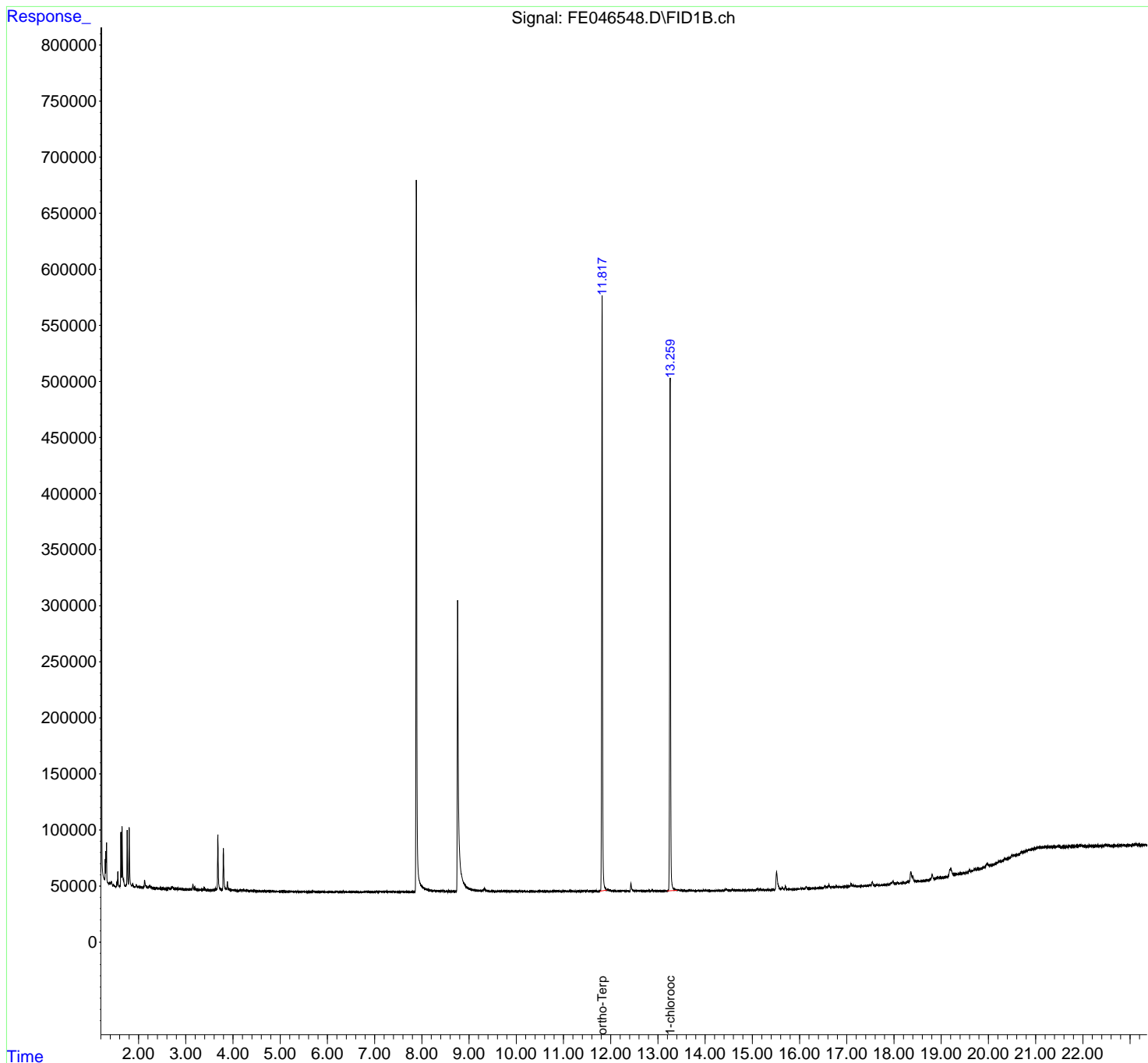
(f)=RT Delta > 1/2 Window

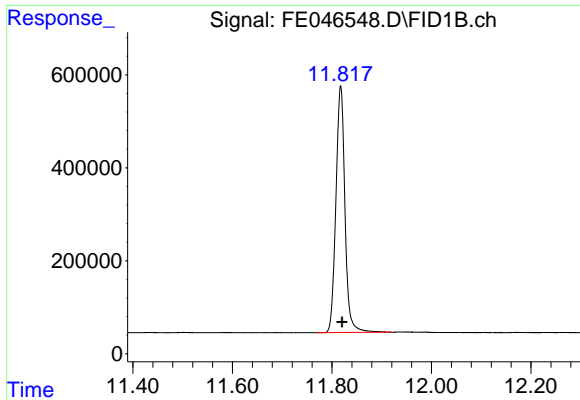
(m)=manual int.

Data Path : Z:\pestpcbsrv\HPCHEM1\FID_E\Data\FE020224AL\
Data File : FE046548.D
Signal(s) : FID1B.ch
Acq On : 02 Feb 2024 22:56
Operator : YP\AJ
Sample : P1307-05
Misc :
ALS Vial : 21 Sample Multiplier: 1

Integration File: sample.E
Quant Time: Feb 05 05:03:37 2024
Quant Method : Z:\pestpcbsrv\HPCHEM1\FID_E\methods\Aliphatic EPH 012524.M
Quant Title : GC Extractables
QLast Update : Thu Jan 25 14:56:03 2024
Response via : Initial Calibration
Integrator: ChemStation

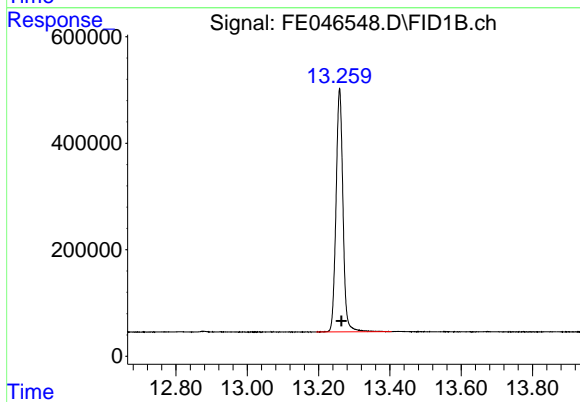
Volume Inj. : 1 ul
Signal Phase : Rxi-1ms
Signal Info : 20M x 0.18mm x 0.18um





#9 ortho-Terphenyl (SURR)

R.T.: 11.818 min
Delta R.T.: -0.003 min
Response: 6696130
Conc: 36.21 ug/ml



#12 1-chlorooctadecane (SURR)

R.T.: 13.259 min
Delta R.T.: -0.005 min
Response: 6162935
Conc: 43.32 ug/ml