

Data Path : Z:\pestpcbsrv\HPCHEM1\FID_E\Data\FE020524AL\
 Data File : FE046582.D
 Signal(s) : FID1B.ch
 Acq On : 05 Feb 2024 18:02
 Operator : YP\AJ
 Sample : P1358-06
 Misc :
 ALS Vial : 18 Sample Multiplier: 1

Instrument :
 FID_E
 ClientSampleId :

Integration File: autoint1.e
 Quant Time: Feb 06 03:15:23 2024
 Quant Method : Z:\pestpcbsrv\HPCHEM1\FID_E\methods\Aliphatic EPH 012524.M
 Quant Title : GC Extractables
 QLast Update : Thu Jan 25 14:56:03 2024
 Response via : Initial Calibration
 Integrator: ChemStation

Volume Inj. : 1 ul
 Signal Phase : Rxi-1ms
 Signal Info : 20M x 0.18mm x 0.18um

Compound	R.T.	Response	Conc Units

System Monitoring Compounds			
9) S ortho-Terphenyl (SURR)	11.831	20034973	108.350 ug/ml
Spiked Amount	50.000	Recovery	= 216.70%
12) S 1-chlorooctadecane (S...	13.275	17407900	122.354 ug/ml
Spiked Amount	50.000	Recovery	= 244.71%
Target Compounds			
6) T n-Tetradecane (C14)	8.445	180365	1.100 ug/ml
7) T n-Hexadecane (C16)	10.064	2387238	13.970 ug/ml
8) T n-Octadecane (C18)	11.511	6721715	38.556 ug/ml
10) T n-Eicosane (C20)	12.830	6432592	37.886 ug/ml
11) T n-Heneicosane (C21)	13.442	6875594	41.223 ug/ml
13) T n-Docosane (C22)	14.013	4634906	27.977 ug/ml
14) T n-Tetracosane (C24)	15.126	2990401	18.123 ug/ml
15) T n-Hexacosane (C26)	16.139	42315	0.262 ug/ml
16) T n-Octacosane (C28)	17.091	53094	0.338 ug/ml
17) T n-Tricontane (C30)	17.985	90368	0.577 ug/ml
18) T n-Dotriacontane (C32)	18.811	135123	0.894 ug/ml
19) T n-Tetratriacontane (C34)	19.621	47659	0.336 ug/ml
21) T n-Octatriacontane (C38)	21.141f	27690	0.216 ug/ml

(f)=RT Delta > 1/2 Window

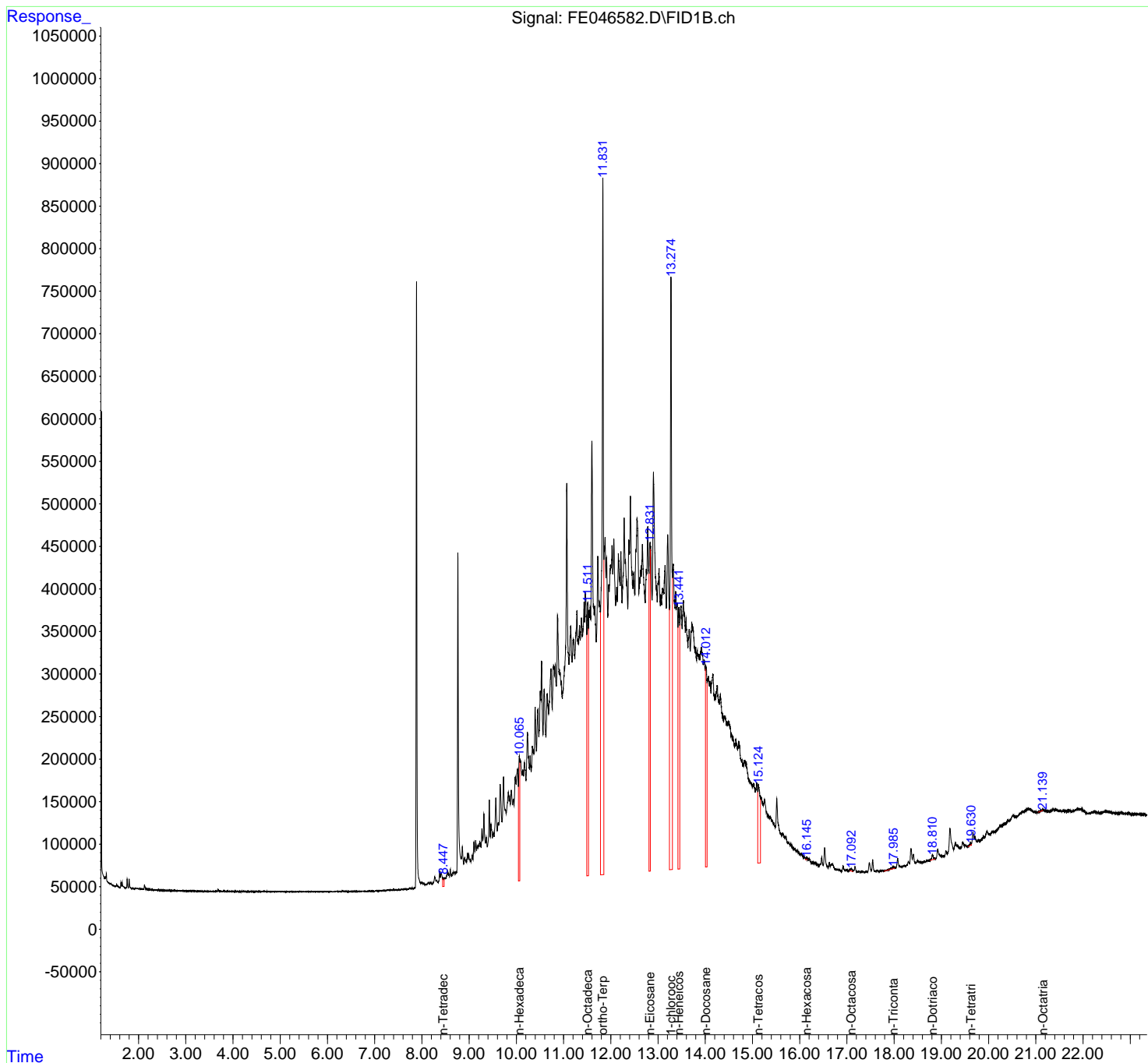
(m)=manual int.

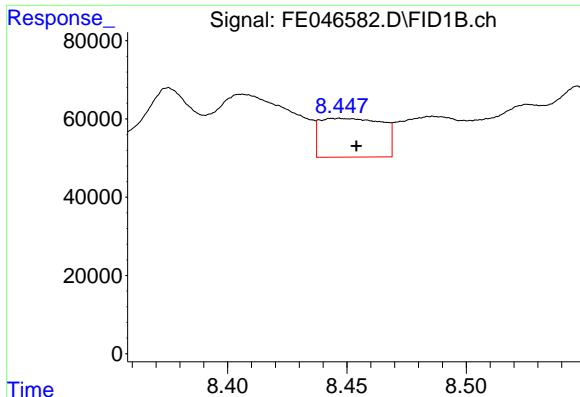
Data Path : Z:\pestpcbsrv\HPCHEM1\FID_E\Data\FE020524AL\
 Data File : FE046582.D
 Signal(s) : FID1B.ch
 Acq On : 05 Feb 2024 18:02
 Operator : YP\AJ
 Sample : P1358-06
 Misc :
 ALS Vial : 18 Sample Multiplier: 1

Instrument :
 FID_E
 ClientSampleId :

Integration File: autoint1.e
 Quant Time: Feb 06 03:15:23 2024
 Quant Method : Z:\pestpcbsrv\HPCHEM1\FID_E\methods\Aliphatic EPH 012524.M
 Quant Title : GC Extractables
 QLast Update : Thu Jan 25 14:56:03 2024
 Response via : Initial Calibration
 Integrator: ChemStation

Volume Inj. : 1 ul
 Signal Phase : Rxi-1ms
 Signal Info : 20M x 0.18mm x 0.18um

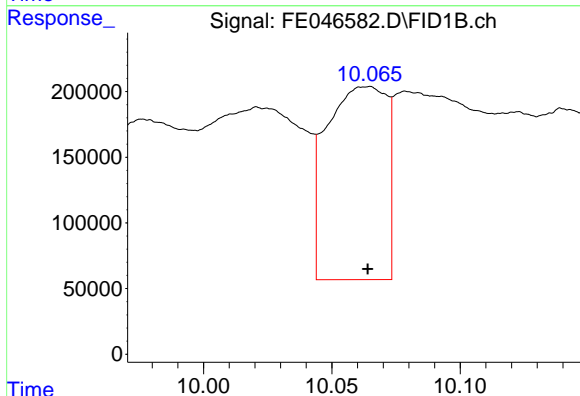




#6 n-Tetradecane (C14)

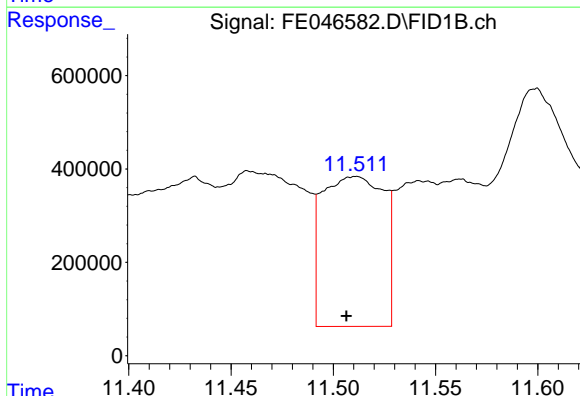
R.T.: 8.445 min
 Delta R.T.: -0.009 min
 Response: 180365
 Conc: 1.10 ug/ml

Instrument :
 FID_E
 ClientSampleId :



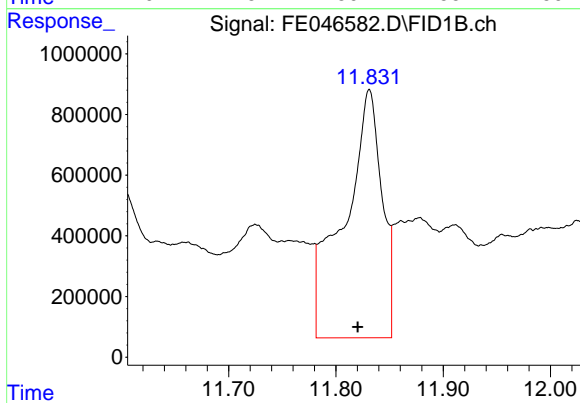
#7 n-Hexadecane (C16)

R.T.: 10.064 min
 Delta R.T.: 0.000 min
 Response: 2387238
 Conc: 13.97 ug/ml



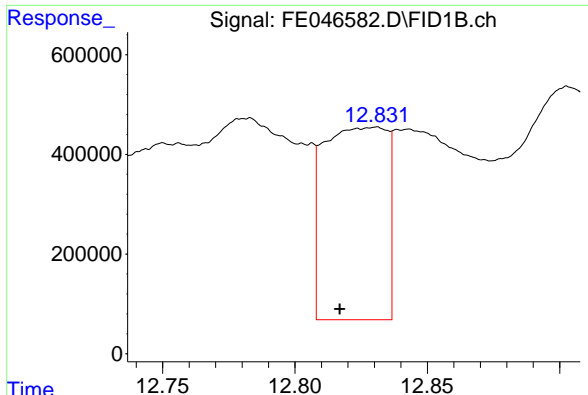
#8 n-Octadecane (C18)

R.T.: 11.511 min
 Delta R.T.: 0.005 min
 Response: 6721715
 Conc: 38.56 ug/ml



#9 ortho-Terphenyl (SURR)

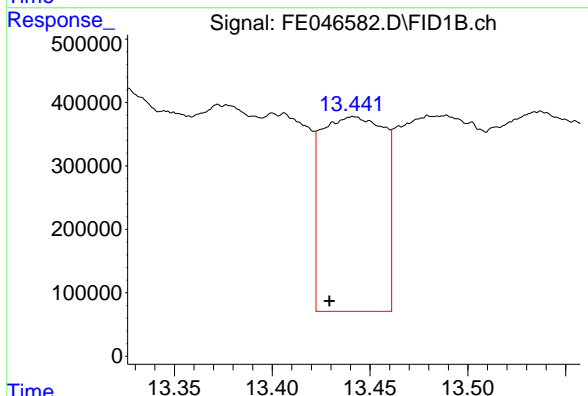
R.T.: 11.831 min
 Delta R.T.: 0.011 min
 Response: 20034973
 Conc: 108.35 ug/ml



#10 n-Eicosane (C20)

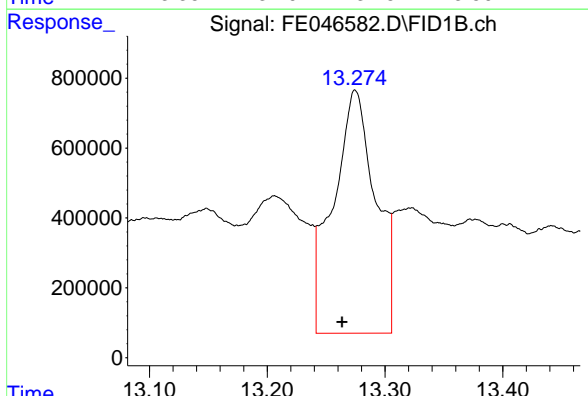
R.T.: 12.830 min
 Delta R.T.: 0.013 min
 Response: 6432592
 Conc: 37.89 ug/ml

Instrument :
 FID_E
 ClientSampleId :



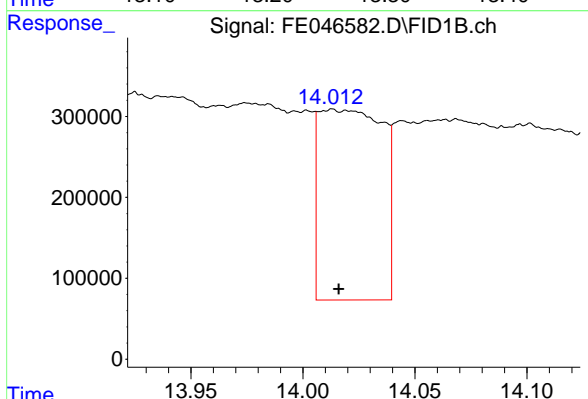
#11 n-Heneicosane (C21)

R.T.: 13.442 min
 Delta R.T.: 0.012 min
 Response: 6875594
 Conc: 41.22 ug/ml



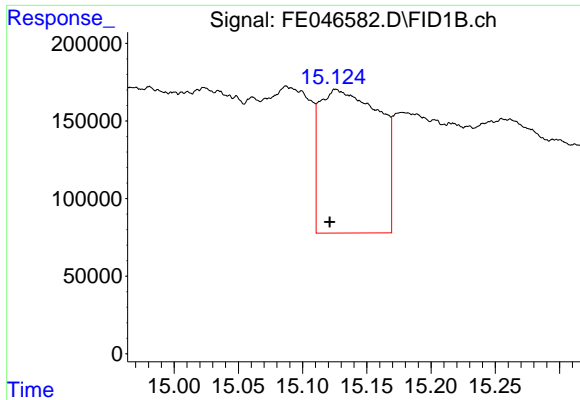
#12 1-chlorooctadecane (SURR)

R.T.: 13.275 min
 Delta R.T.: 0.011 min
 Response: 17407900
 Conc: 122.35 ug/ml



#13 n-Docosane (C22)

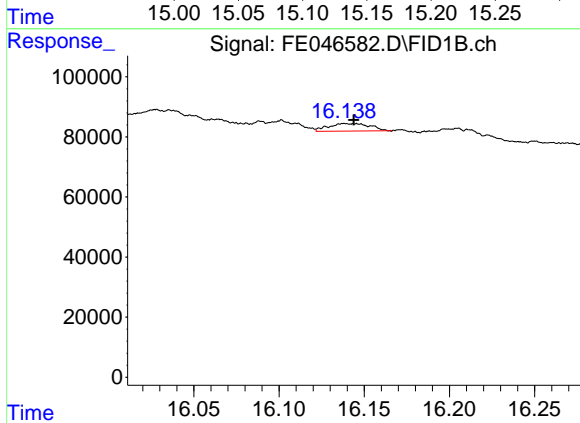
R.T.: 14.013 min
 Delta R.T.: -0.003 min
 Response: 4634906
 Conc: 27.98 ug/ml



#14 n-Tetracosane (C24)

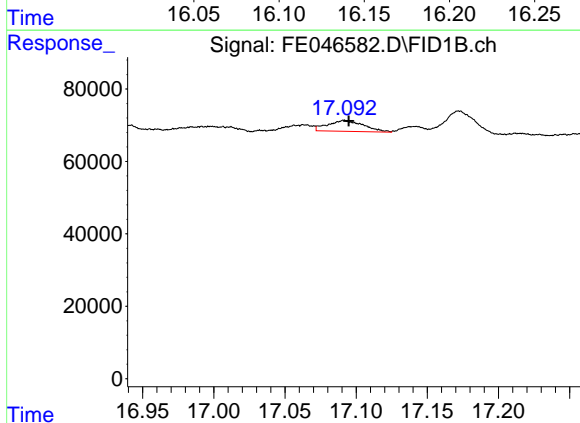
R.T.: 15.126 min
 Delta R.T.: 0.005 min
 Response: 2990401
 Conc: 18.12 ug/ml

Instrument :
 FID_E
 ClientSampleId :



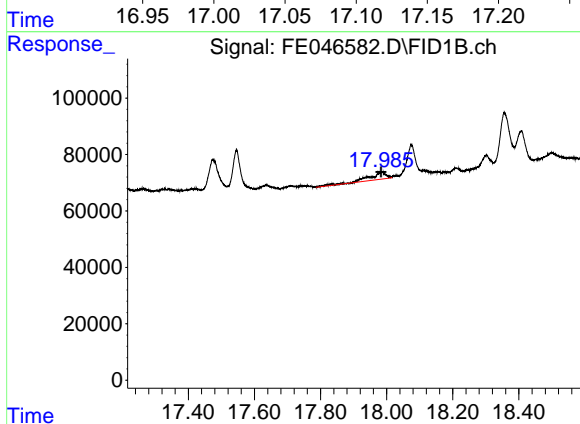
#15 n-Hexacosane (C26)

R.T.: 16.139 min
 Delta R.T.: -0.005 min
 Response: 42315
 Conc: 0.26 ug/ml



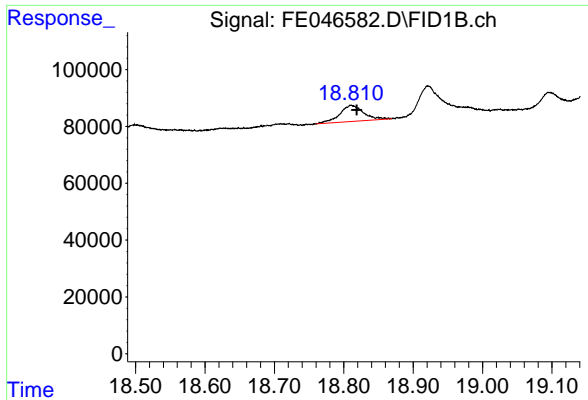
#16 n-Octacosane (C28)

R.T.: 17.091 min
 Delta R.T.: -0.003 min
 Response: 53094
 Conc: 0.34 ug/ml



#17 n-Tricontane (C30)

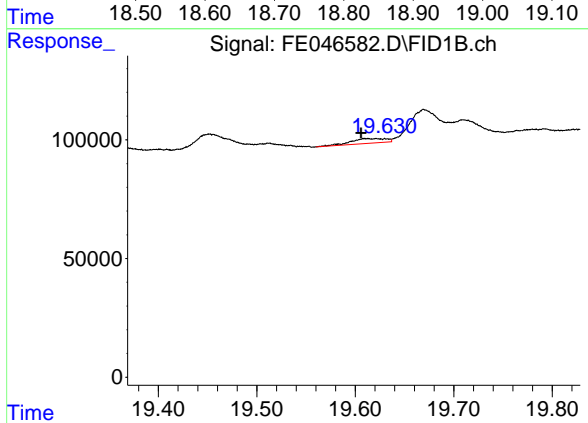
R.T.: 17.985 min
 Delta R.T.: 0.001 min
 Response: 90368
 Conc: 0.58 ug/ml



#18 n-Dotriacontane (C32)

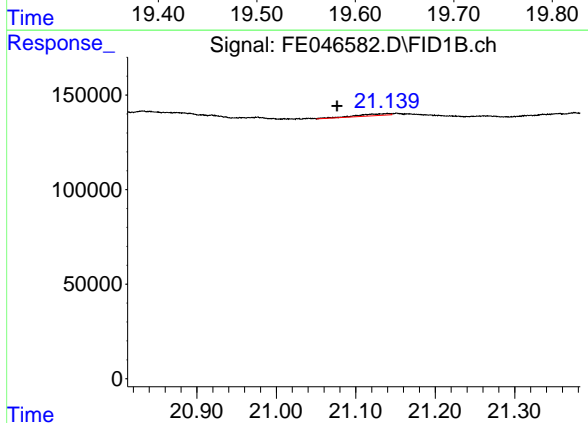
R.T.: 18.811 min
 Delta R.T.: -0.008 min
 Response: 135123
 Conc: 0.89 ug/ml

Instrument :
 FID_E
 ClientSampleId :



#19 n-Tetraatriacontane (C34)

R.T.: 19.621 min
 Delta R.T.: 0.016 min
 Response: 47659
 Conc: 0.34 ug/ml



#21 n-Octatriacontane (C38)

R.T.: 21.141 min
 Delta R.T.: 0.064 min
 Response: 27690
 Conc: 0.22 ug/ml