

Data Path : Z:\pestpcbsrv\HPCHEM1\FID\_E\Data\FE020624AL\  
 Data File : FE046616.D  
 Signal(s) : FID1B.ch  
 Acq On : 06 Feb 2024 16:35  
 Operator : YP\AJ  
 Sample : PB158864BL  
 Misc :  
 ALS Vial : 12 Sample Multiplier: 1

Integration File: autoint1.e  
 Quant Time: Feb 07 10:13:32 2024  
 Quant Method : Z:\pestpcbsrv\HPCHEM1\FID\_E\methods\Aliphatic EPH 012524.M  
 Quant Title : GC Extractables  
 QLast Update : Thu Jan 25 14:56:03 2024  
 Response via : Initial Calibration  
 Integrator: ChemStation

Volume Inj. : 1 ul  
 Signal Phase : Rxi-1ms  
 Signal Info : 20M x 0.18mm x 0.18um

Compound	R.T.	Response	Conc Units
-----			
System Monitoring Compounds			
9) S ortho-Terphenyl (SURR)	11.814	6231879	33.702 ug/ml
Spiked Amount	50.000	Recovery	= 67.40%
12) S 1-chlorooctadecane (S...	13.256	4850709	34.094 ug/ml
Spiked Amount	50.000	Recovery	= 68.19%

Target Compounds

-----

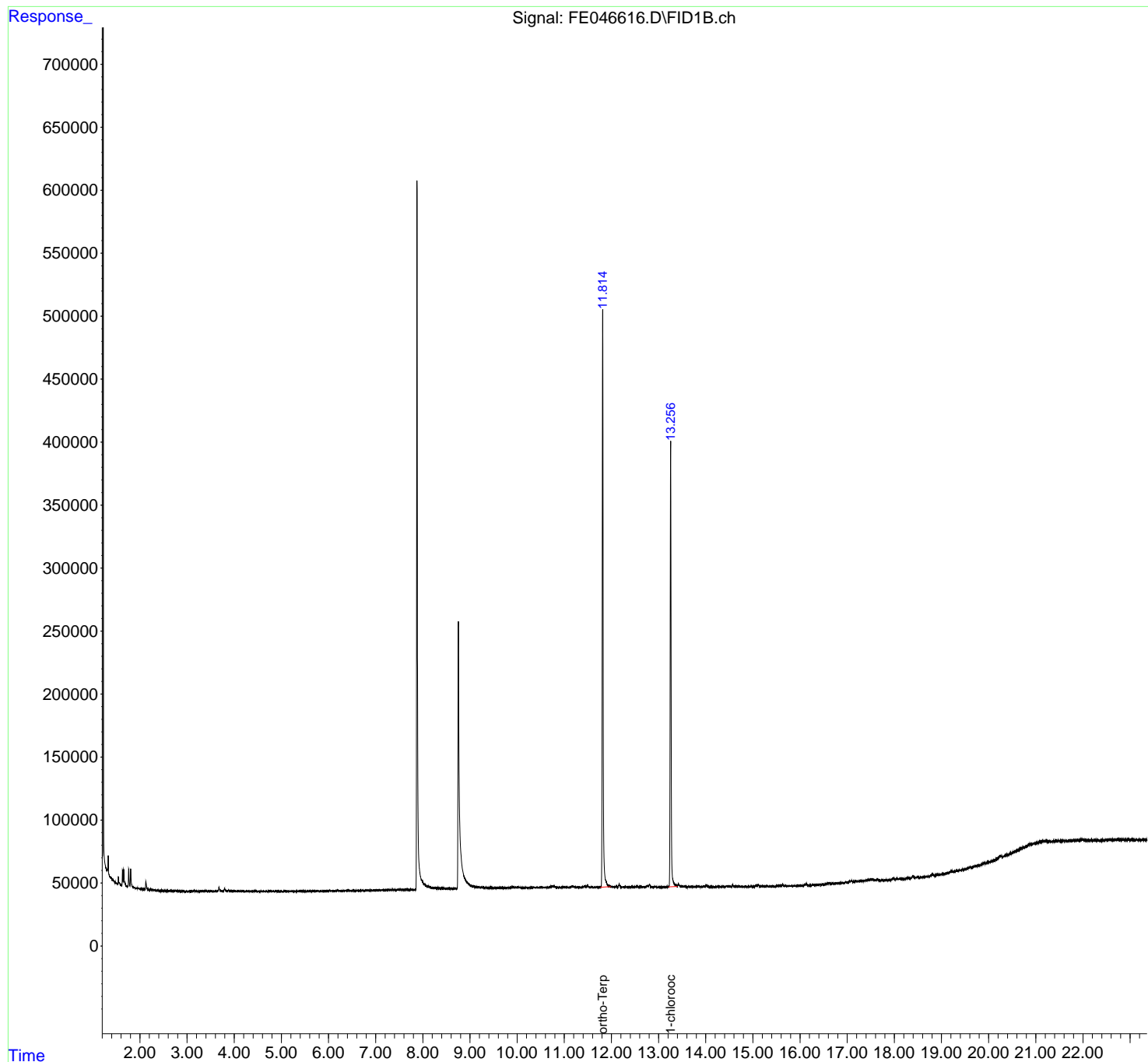
(f)=RT Delta > 1/2 Window

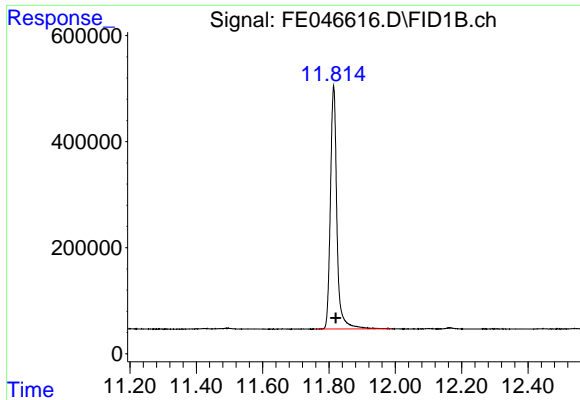
(m)=manual int.

Data Path : Z:\pestpcbsrv\HPCHEM1\FID\_E\Data\FE020624AL\  
Data File : FE046616.D  
Signal(s) : FID1B.ch  
Acq On : 06 Feb 2024 16:35  
Operator : YP\AJ  
Sample : PB158864BL  
Misc :  
ALS Vial : 12 Sample Multiplier: 1

Integration File: autoint1.e  
Quant Time: Feb 07 10:13:32 2024  
Quant Method : Z:\pestpcbsrv\HPCHEM1\FID\_E\methods\Aliphatic EPH 012524.M  
Quant Title : GC Extractables  
QLast Update : Thu Jan 25 14:56:03 2024  
Response via : Initial Calibration  
Integrator: ChemStation

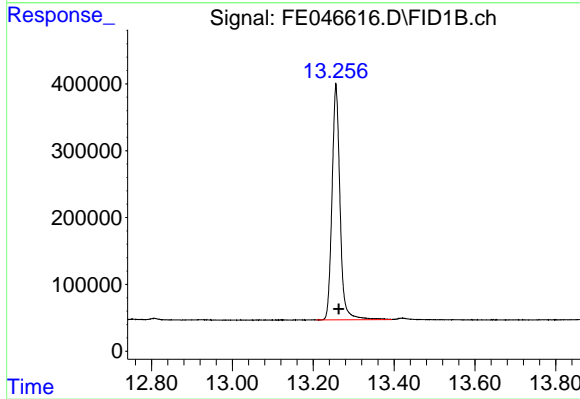
Volume Inj. : 1 ul  
Signal Phase : Rxi-1ms  
Signal Info : 20M x 0.18mm x 0.18um





#9 ortho-Terphenyl (SURR)

R.T.: 11.814 min  
Delta R.T.: -0.006 min  
Response: 6231879  
Conc: 33.70 ug/ml



#12 1-chlorooctadecane (SURR)

R.T.: 13.256 min  
Delta R.T.: -0.007 min  
Response: 4850709  
Conc: 34.09 ug/ml