

Data Path : Z:\pestpcbsrv\HPCHEM1\FID_E\Data\FE020725AL\
 Data File : FE052291.D
 Signal(s) : FID1B.ch
 Acq On : 07 Feb 2025 14:57
 Operator : YP\AJ
 Sample : Q1308-10
 Misc :
 ALS Vial : 19 Sample Multiplier: 1

Instrument :
 FID_E
 ClientSampleId :

Integration File: autoint1.e
 Quant Time: Feb 08 02:24:47 2025
 Quant Method : Z:\pestpcbsrv\HPCHEM1\FID_E\methods\Aliphatic EPH 020325.M
 Quant Title : GC Extractables
 QLast Update : Fri Feb 07 07:52:07 2025
 Response via : Initial Calibration
 Integrator: ChemStation

Volume Inj. : 1 ul
 Signal Phase : Rxi-1ms
 Signal Info : 20M x 0.18mm x 0.18um

Compound	R.T.	Response	Conc Units

System Monitoring Compounds			
9) S ortho-Terphenyl (SURR)	12.277	4082047	32.981 ug/ml
Spiked Amount	50.000	Recovery	= 65.96%
12) S 1-chlorooctadecane (S...	13.725	6137998	62.194 ug/ml
Spiked Amount	50.000	Recovery	= 124.39%
Target Compounds			
1) T n-Nonane (C9)	3.776	366979	3.929 ug/ml
2) T n-Decane (C10)	4.963	4508795	46.951 ug/ml
3) T A~Naphthalene (C11.7)	6.733	4656304	43.569 ug/ml
4) T n-Dodecane (C12)	7.131	5039779	50.847 ug/ml
5) T A~2-methylnaphthalene...	7.796	5962337	56.929 ug/ml
6) T n-Tetradecane (C14)	8.960	6552369	64.931 ug/ml
7) T n-Hexadecane (C16)	10.548	2536047	23.370 ug/ml
8) T n-Octadecane (C18)	11.960	4809458	42.336 ug/ml
10) T n-Eicosane (C20)	13.279	2449805	21.708 ug/ml

(f)=RT Delta > 1/2 Window

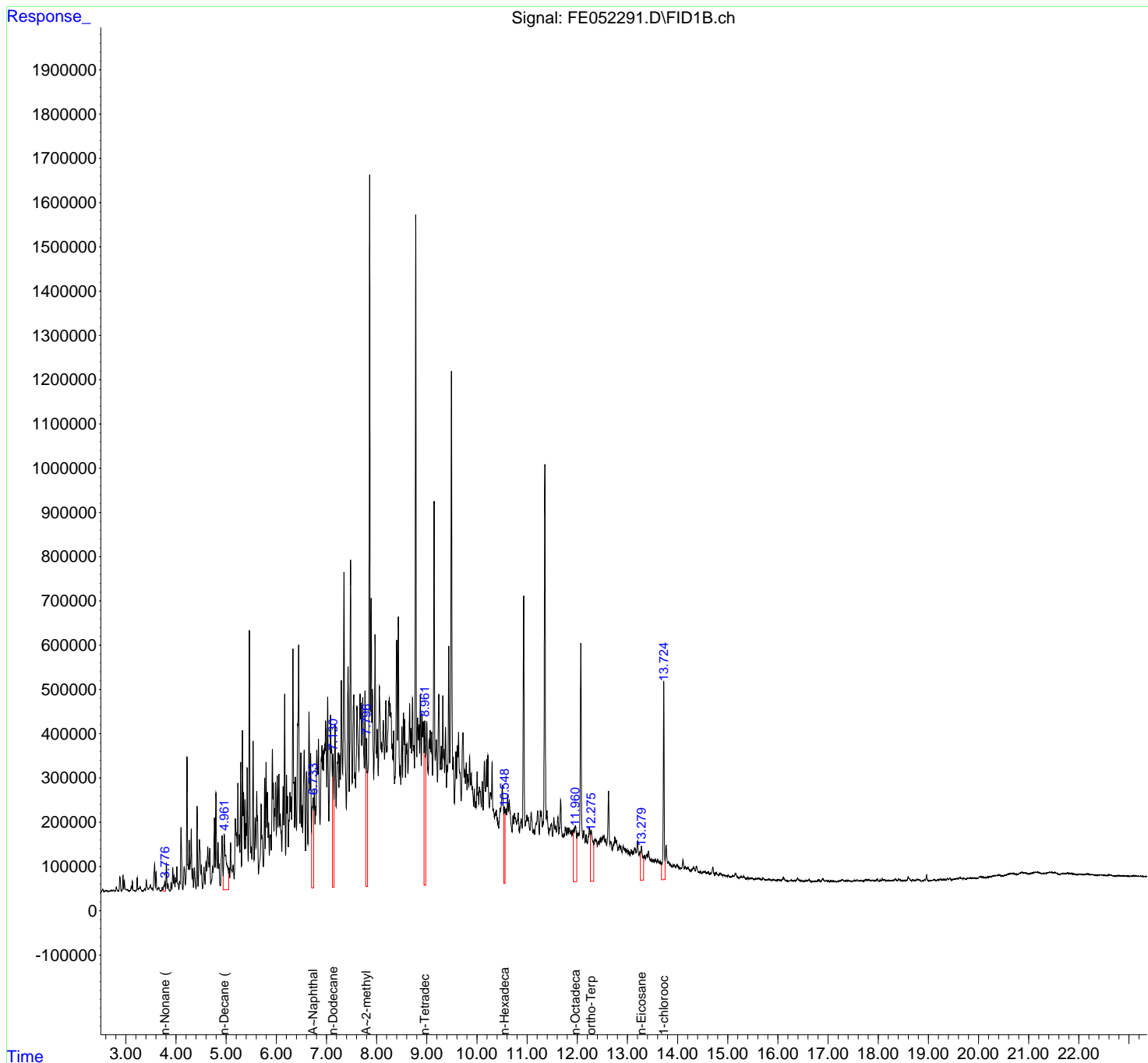
(m)=manual int.

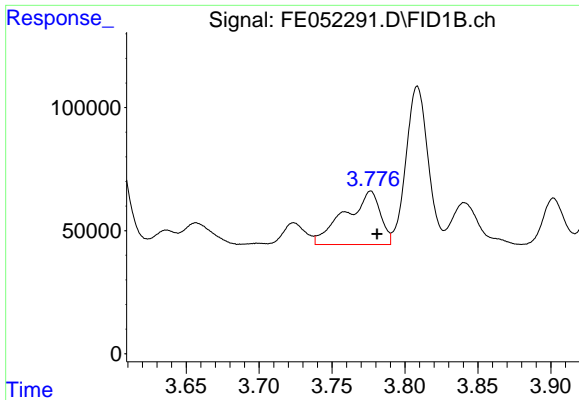
Data Path : Z:\pestpcbsrv\HPCHEM1\FID_E\Data\FE020725AL\
Data File : FE052291.D
Signal(s) : FID1B.ch
Acq On : 07 Feb 2025 14:57
Operator : YP\AJ
Sample : Q1308-10
Misc :
ALS Vial : 19 Sample Multiplier: 1

Instrument :
FID_E
ClientSampleId :

Integration File: autoint1.e
Quant Time: Feb 08 02:24:47 2025
Quant Method : Z:\pestpcbsrv\HPCHEM1\FID_E\methods\Aliphatic EPH 020325.M
Quant Title : GC Extractables
QLast Update : Fri Feb 07 07:52:07 2025
Response via : Initial Calibration
Integrator: ChemStation

Volume Inj. : 1 ul
Signal Phase : Rxi-1ms
Signal Info : 20M x 0.18mm x 0.18um

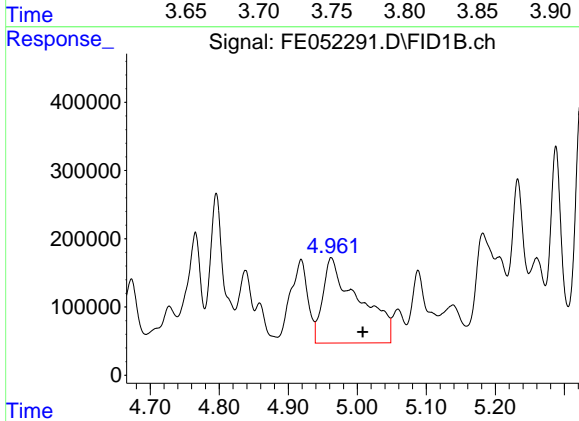




#1 n-Nonane (C9)

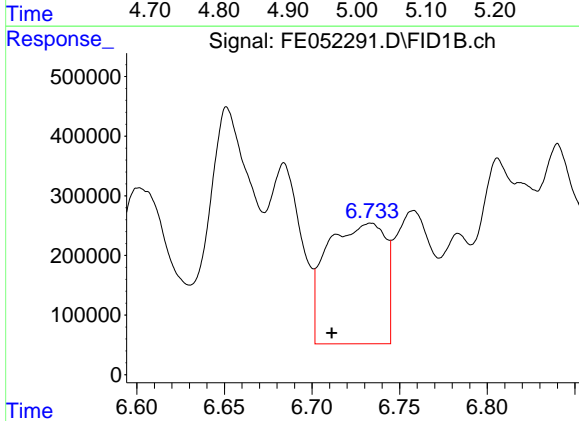
R.T.: 3.776 min
 Delta R.T.: -0.005 min
 Response: 366979
 Conc: 3.93 ug/ml

Instrument :
 FID_E
 ClientSampleId :



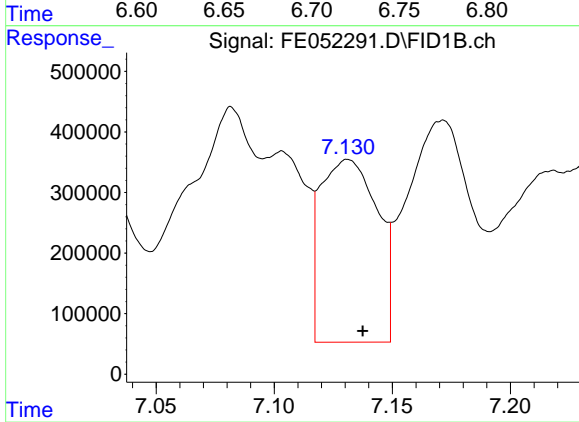
#2 n-Decane (C10)

R.T.: 4.963 min
 Delta R.T.: -0.045 min
 Response: 4508795
 Conc: 46.95 ug/ml



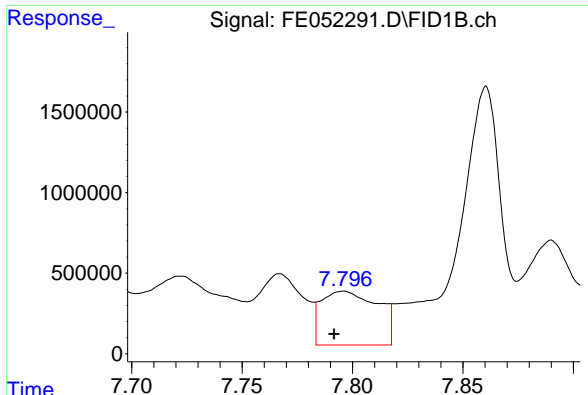
#3 A~Naphthalene (C11.7)

R.T.: 6.733 min
 Delta R.T.: 0.022 min
 Response: 4656304
 Conc: 43.57 ug/ml



#4 n-Dodecane (C12)

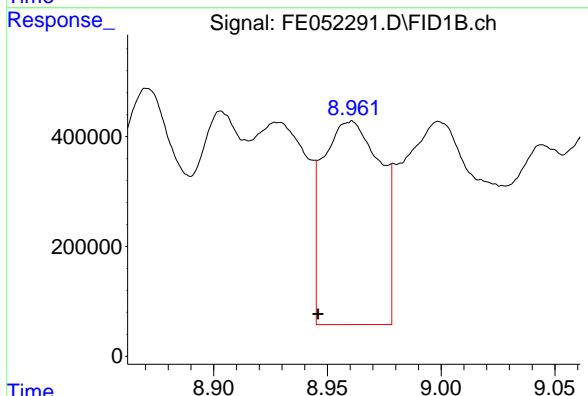
R.T.: 7.131 min
 Delta R.T.: -0.006 min
 Response: 5039779
 Conc: 50.85 ug/ml



#5 A~2-methylnaphthalene (C12.89)

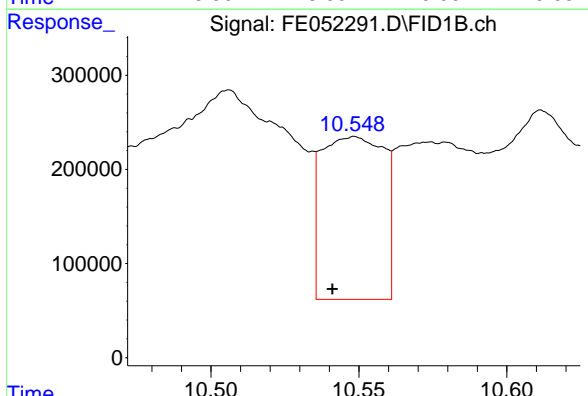
R.T.: 7.796 min
 Delta R.T.: 0.004 min
 Response: 5962337
 Conc: 56.93 ug/ml

Instrument :
 FID_E
 ClientSampleId :



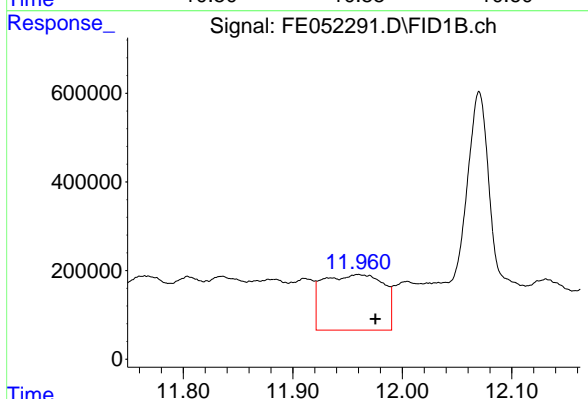
#6 n-Tetradecane (C14)

R.T.: 8.960 min
 Delta R.T.: 0.014 min
 Response: 6552369
 Conc: 64.93 ug/ml



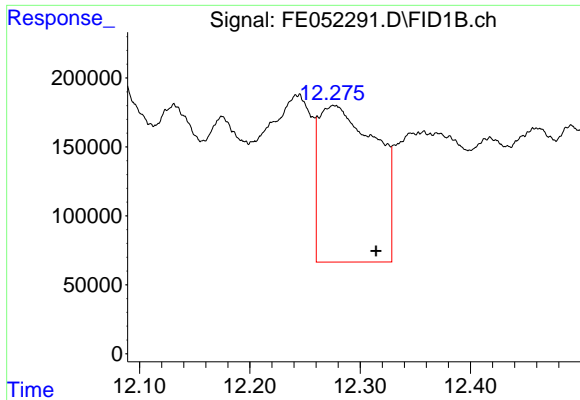
#7 n-Hexadecane (C16)

R.T.: 10.548 min
 Delta R.T.: 0.007 min
 Response: 2536047
 Conc: 23.37 ug/ml



#8 n-Octadecane (C18)

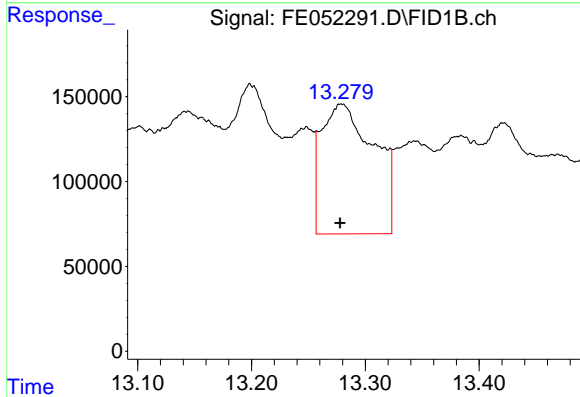
R.T.: 11.960 min
 Delta R.T.: -0.015 min
 Response: 4809458
 Conc: 42.34 ug/ml



#9 ortho-Terphenyl (SURR)

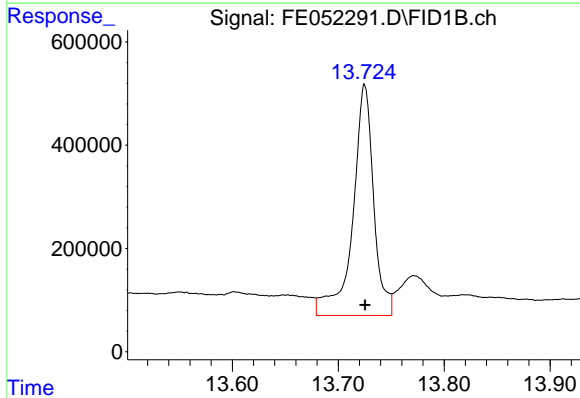
R.T.: 12.277 min
 Delta R.T.: -0.038 min
 Response: 4082047
 Conc: 32.98 ug/ml

Instrument :
 FID_E
 ClientSampleId :



#10 n-Eicosane (C20)

R.T.: 13.279 min
 Delta R.T.: 0.002 min
 Response: 2449805
 Conc: 21.71 ug/ml



#12 1-chlorooctadecane (SURR)

R.T.: 13.725 min
 Delta R.T.: 0.000 min
 Response: 6137998
 Conc: 62.19 ug/ml