

Data Path : Z:\pestpcbsrv\HPCHEM1\FID_E\Data\FE020822AL\
 Data File : FE034887.D
 Signal(s) : FID1B.CH
 Acq On : 08 Feb 2022 21:55
 Operator : YP\AJ
 Sample : PB142517BL
 Misc :
 ALS Vial : 10 Sample Multiplier: 1

Instrument :
 FID_E
 ClientSampleId :
 PB142517BL

Integration File: sample.E
 Quant Time: Feb 09 03:09:45 2022
 Quant Method : Z:\pestpcbsrv\HPCHEM1\FID_E\methods\Aliphatic EPH 020822.M
 Quant Title : GC Extractables
 QLast Update : Tue Feb 08 22:05:03 2022
 Response via : Initial Calibration
 Integrator: ChemStation 6890 Scale Mode: Large solvent peaks clipped

Volume Inj. : 1 ul
 Signal Phase : Rxi-1ms
 Signal Info : 20M x 0.18mm x 0.18um

Compound	R.T.	Response	Conc Units

System Monitoring Compounds			
9) S ortho-Terphenyl (SURR)	11.141	13693755	46.757 ug/ml
Spiked Amount	50.000	Recovery	= 93.51%
12) S 1-chlorooctadecane (S...	12.570	10728111	47.984 ug/ml
Spiked Amount	50.000	Recovery	= 95.97%

Target Compounds

(f)=RT Delta > 1/2 Window

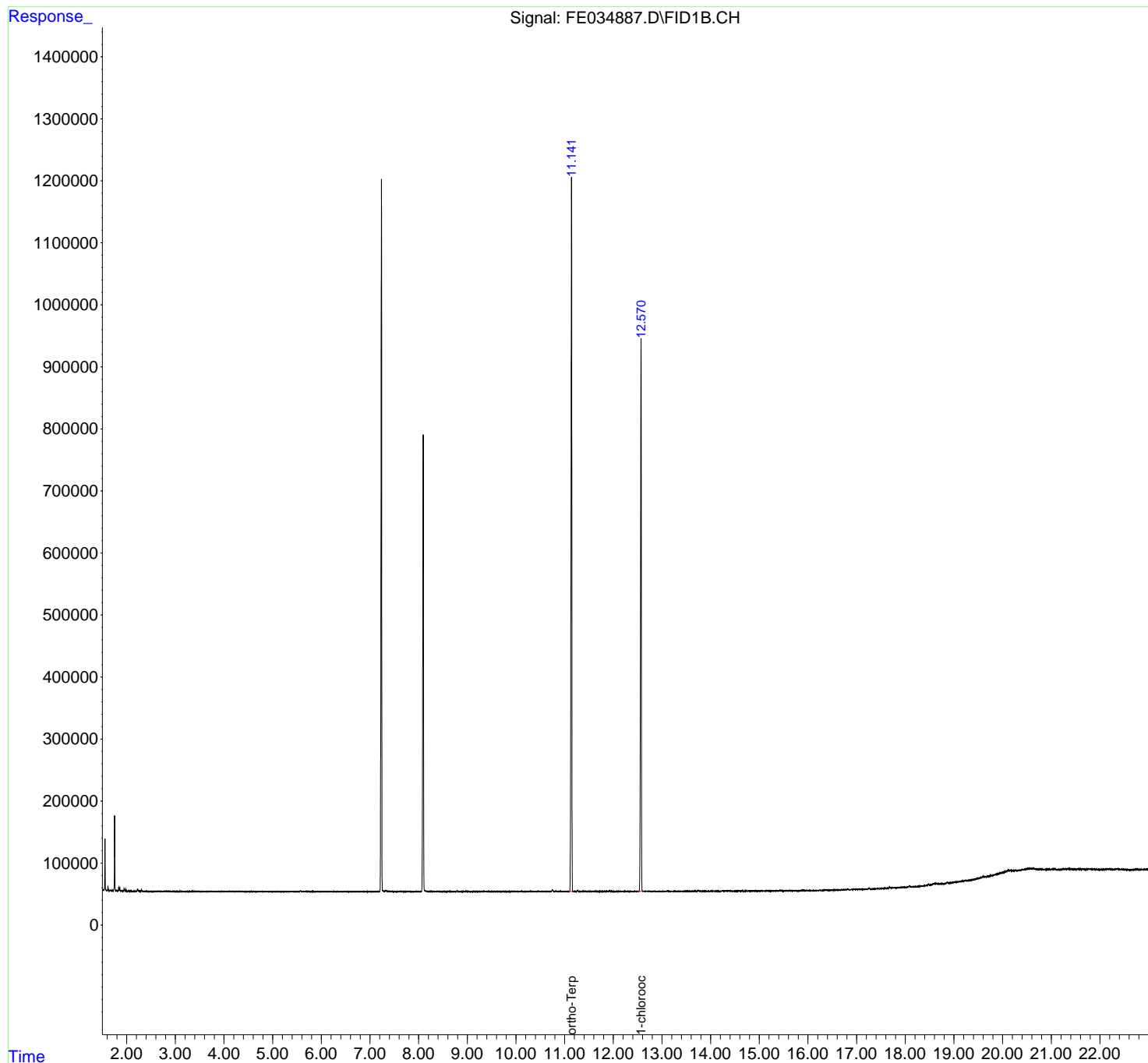
(m)=manual int.

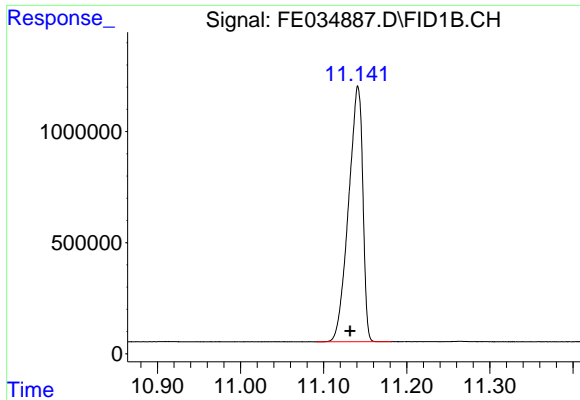
Data Path : Z:\pestpcbsrv\HPCHEM1\FID_E\Data\FE020822AL\
Data File : FE034887.D
Signal(s) : FID1B.CH
Acq On : 08 Feb 2022 21:55
Operator : YP\AJ
Sample : PB142517BL
Misc :
ALS Vial : 10 Sample Multiplier: 1

Instrument :
FID_E
ClientSampleId :
PB142517BL

Integration File: sample.E
Quant Time: Feb 09 03:09:45 2022
Quant Method : Z:\pestpcbsrv\HPCHEM1\FID_E\methods\Aliphatic EPH 020822.M
Quant Title : GC Extractables
QLast Update : Tue Feb 08 22:05:03 2022
Response via : Initial Calibration
Integrator: ChemStation 6890 Scale Mode: Large solvent peaks clipped

Volume Inj. : 1 ul
Signal Phase : Rxi-1ms
Signal Info : 20M x 0.18mm x 0.18um

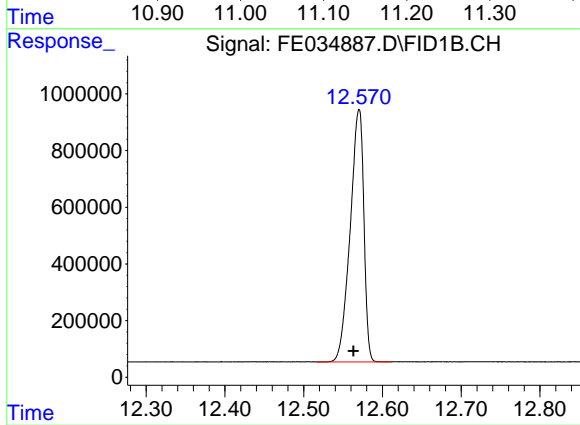




#9 ortho-Terphenyl (SURR)

R.T.: 11.141 min
Delta R.T.: 0.009 min
Response: 13693755
Conc: 46.76 ug/ml

Instrument :
FID_E
ClientSampleId :
PB142517BL



#12 1-chlorooctadecane (SURR)

R.T.: 12.570 min
Delta R.T.: 0.007 min
Response: 10728111
Conc: 47.98 ug/ml