

Data Path : Z:\pestpcbsrv\HPCHEM1\FID_E\Data\FE020823AL\
 Data File : FE040267.D
 Signal(s) : FID1B.ch
 Acq On : 08 Feb 2023 20:09
 Operator : YP\AJ
 Sample : 01477-02
 Misc :
 ALS Vial : 19 Sample Multiplier: 1

Instrument :
 FID_E
ClientSampleId :
 TR-6-020723-EPH-2

Integration File: autoint1.e
 Quant Time: Feb 09 02:36:44 2023
 Quant Method : Z:\pestpcbsrv\HPCHEM1\FID_E\methods\Aliphatic EPH 020223.M
 Quant Title : GC Extractables
 QLast Update : Thu Feb 02 04:52:48 2023
 Response via : Initial Calibration
 Integrator: ChemStation

Volume Inj. : 1 ul
 Signal Phase : Rxi-1ms
 Signal Info : 20M x 0.18mm x 0.18um

Compound	R.T.	Response	Conc Units

System Monitoring Compounds			
9) S ortho-Terphenyl (SURR)	11.897	5738481	35.453 ug/ml
Spiked Amount	50.000	Recovery	= 70.91%
12) S 1-chlorooctadecane (S...	13.334	5632422	45.414 ug/ml
Spiked Amount	50.000	Recovery	= 90.83%

Target Compounds

(f)=RT Delta > 1/2 Window

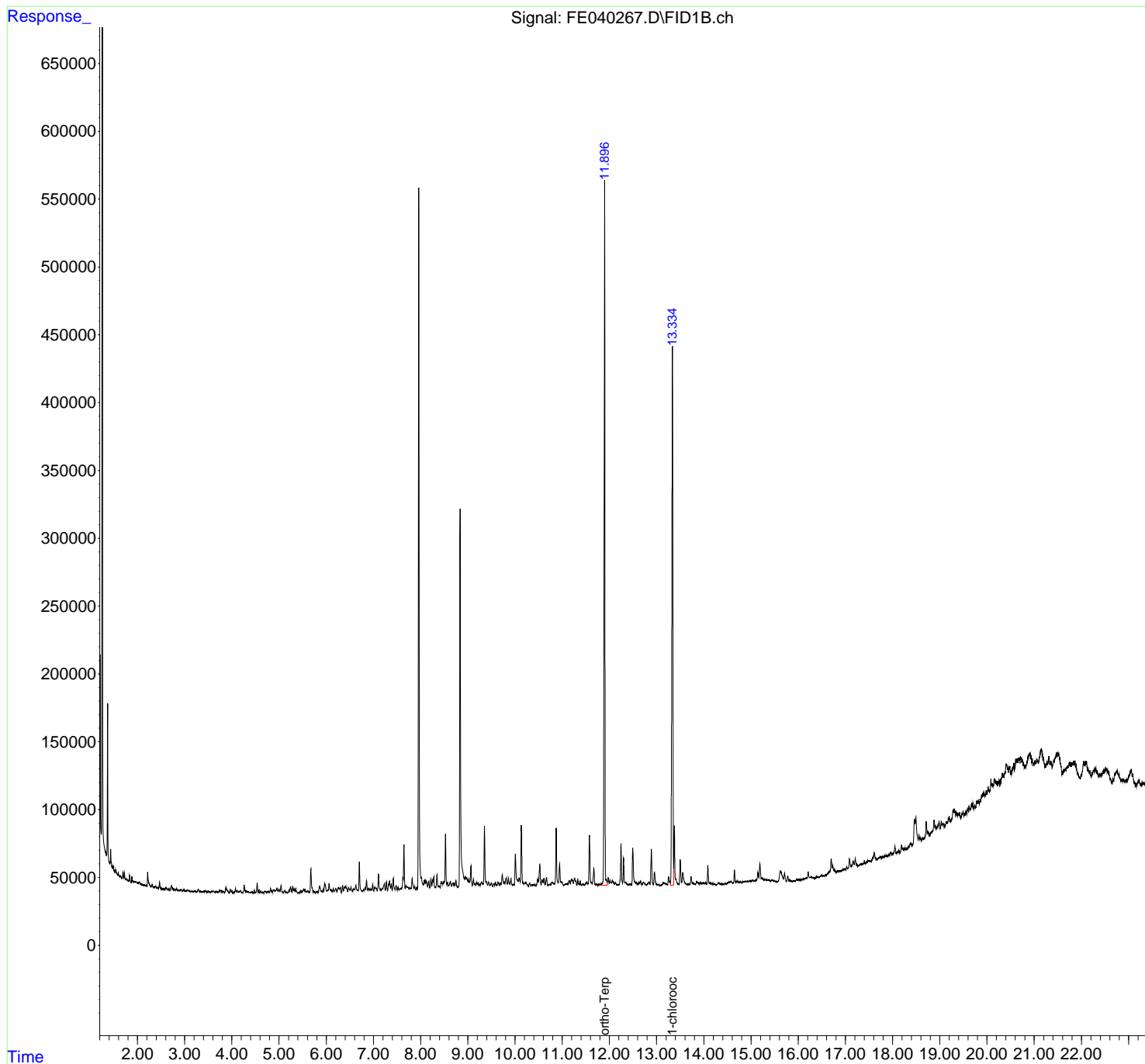
(m)=manual int.

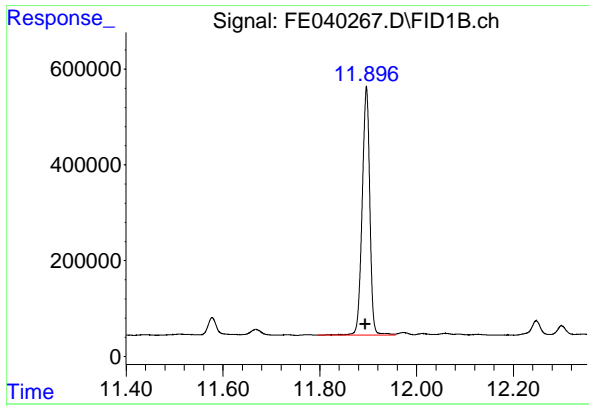
Data Path : Z:\pestpcbsrv\HPCHEM1\FID_E\Data\FE020823AL\
 Data File : FE040267.D
 Signal(s) : FID1B.ch
 Acq On : 08 Feb 2023 20:09
 Operator : YP\AJ
 Sample : 01477-02
 Misc :
 ALS Vial : 19 Sample Multiplier: 1

Instrument :
 FID_E
 ClientSampleId :
 TR-6-020723-EPH-2

Integration File: autoint1.e
 Quant Time: Feb 09 02:36:44 2023
 Quant Method : Z:\pestpcbsrv\HPCHEM1\FID_E\methods\Aliphatic EPH 020223.M
 Quant Title : GC Extractables
 QLast Update : Thu Feb 02 04:52:48 2023
 Response via : Initial Calibration
 Integrator: ChemStation

Volume Inj. : 1 ul
 Signal Phase : Rxi-1ms
 Signal Info : 20M x 0.18mm x 0.18um

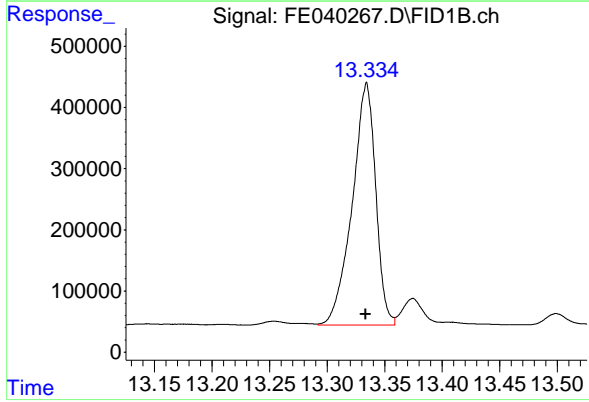




#9 ortho-Terphenyl (SURR)

R.T.: 11.897 min
Delta R.T.: 0.002 min
Response: 5738481
Conc: 35.45 ug/ml

Instrument :
FID_E
ClientSampleId :
TR-6-020723-EPH-2



#12 1-chlorooctadecane (SURR)

R.T.: 13.334 min
Delta R.T.: 0.000 min
Response: 5632422
Conc: 45.41 ug/ml