

Data Path : Z:\pestpcbsrv\HPCHEM1\FID_E\Data\FE020824AL\
 Data File : FE046651.D
 Signal(s) : FID1B.ch
 Acq On : 08 Feb 2024 21:57
 Operator : YP\AJ
 Sample : P1411-02
 Misc :
 ALS Vial : 15 Sample Multiplier: 1

Instrument :
 FID_E
 ClientSampleId :
 72-11929-E2

Integration File: autoint1.e
 Quant Time: Feb 09 02:41:55 2024
 Quant Method : Z:\pestpcbsrv\HPCHEM1\FID_E\methods\Aliphatic EPH 012524.M
 Quant Title : GC Extractables
 QLast Update : Thu Jan 25 14:56:03 2024
 Response via : Initial Calibration
 Integrator: ChemStation

Volume Inj. : 1 ul
 Signal Phase : Rxi-1ms
 Signal Info : 20M x 0.18mm x 0.18um

Compound	R.T.	Response	Conc Units

System Monitoring Compounds			
9) S ortho-Terphenyl (SURR)	11.827	20218962	109.345 ug/ml
Spiked Amount	50.000	Recovery	= 218.69%
12) S 1-chlorooctadecane (S...	13.257	10832927	76.141 ug/ml
Spiked Amount	50.000	Recovery	= 152.28%
Target Compounds			
1) T n-Nonane (C9)	3.207	217062	1.344 ug/ml
2) T n-Decane (C10)	4.476	585029	3.570 ug/ml
3) T A~Naphthalene (C11.7)	6.181	22839355	133.565 ug/ml
4) T n-Dodecane (C12)	6.644	15699964	94.915 ug/ml
5) T A~2-methylnaphthalene...	7.265	24514777	153.706 ug/ml
6) T n-Tetradecane (C14)	8.432	64667478	394.564 ug/ml
7) T n-Hexadecane (C16)	10.075	36928255	216.107 ug/ml
8) T n-Octadecane (C18)	11.505	11180826	64.133 ug/ml
10) T n-Eicosane (C20)	12.808	4925134	29.008 ug/ml
11) T n-Heneicosane (C21)	13.426	2391753	14.340 ug/ml
13) T n-Docosane (C22)	14.029	875718	5.286 ug/ml
14) T n-Tetracosane (C24)	15.119	448038	2.715 ug/ml
15) T n-Hexacosane (C26)	16.129	27722	0.172 ug/ml
16) T n-Octacosane (C28)	17.075	71171	0.453 ug/ml
17) T n-Tricontane (C30)	17.966	52547	0.335 ug/ml
18) T n-Dotriacontane (C32)	18.797	51981	0.344 ug/ml
19) T n-Tetratriacontane (C34)	19.587	48472	0.342 ug/ml
20) T n-Hexatriacontane (C36)	20.328	36336	0.264 ug/ml
21) T n-Octatriacontane (C38)	21.052	49988	0.390 ug/ml

(f)=RT Delta > 1/2 Window

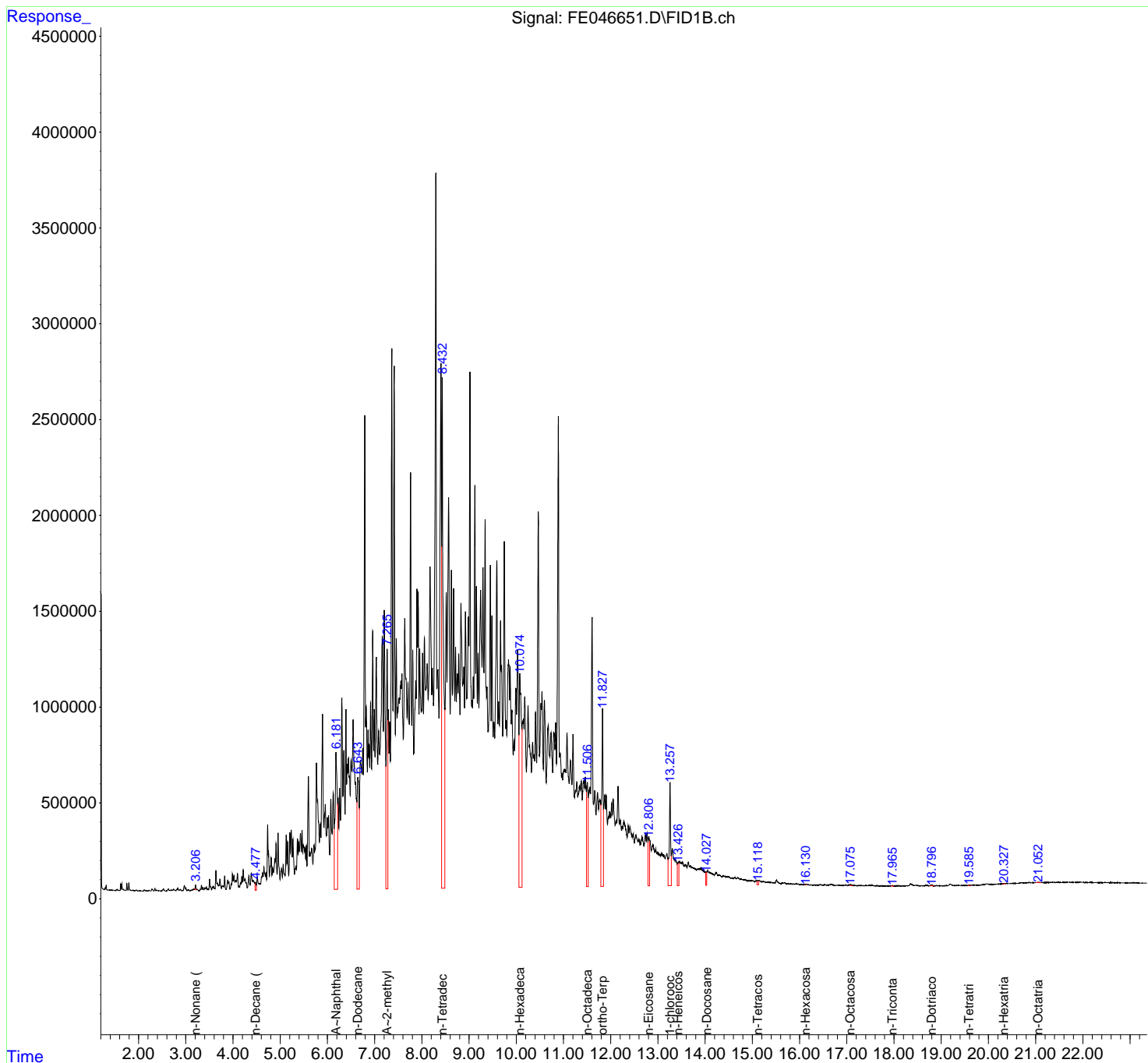
(m)=manual int.

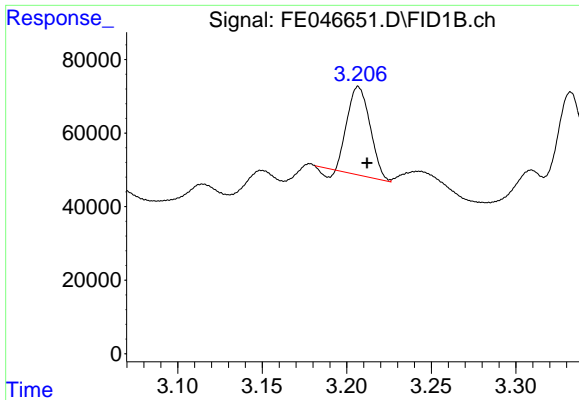
Data Path : Z:\pestpcbsrv\HPCHEM1\FID_E\Data\FE020824AL\
 Data File : FE046651.D
 Signal(s) : FID1B.ch
 Acq On : 08 Feb 2024 21:57
 Operator : YP\AJ
 Sample : P1411-02
 Misc :
 ALS Vial : 15 Sample Multiplier: 1

Instrument :
 FID_E
 ClientSampleId :
 72-11929-E2

Integration File: autoint1.e
 Quant Time: Feb 09 02:41:55 2024
 Quant Method : Z:\pestpcbsrv\HPCHEM1\FID_E\methods\Aliphatic EPH 012524.M
 Quant Title : GC Extractables
 QLast Update : Thu Jan 25 14:56:03 2024
 Response via : Initial Calibration
 Integrator: ChemStation

Volume Inj. : 1 ul
 Signal Phase : Rxi-1ms
 Signal Info : 20M x 0.18mm x 0.18um

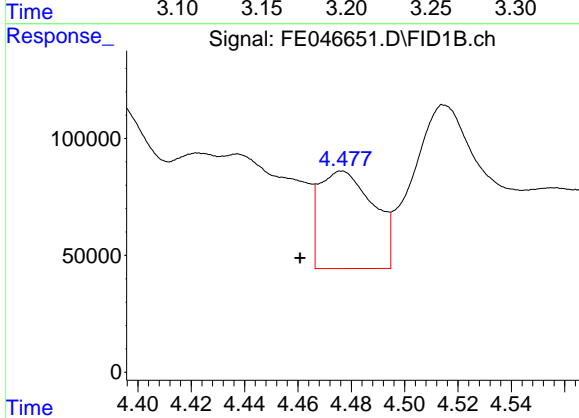




#1 n-Nonane (C9)

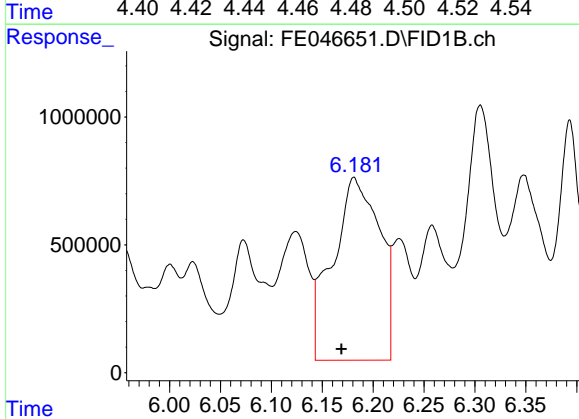
R.T.: 3.207 min
 Delta R.T.: -0.005 min
 Response: 217062
 Conc: 1.34 ug/ml

Instrument : FID_E
 ClientSampleId : 72-11929-E2



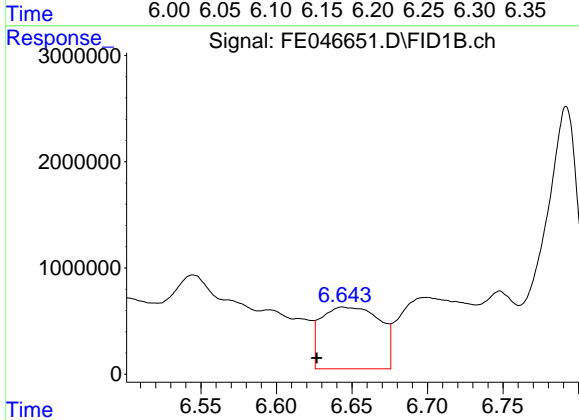
#2 n-Decane (C10)

R.T.: 4.476 min
 Delta R.T.: 0.016 min
 Response: 585029
 Conc: 3.57 ug/ml



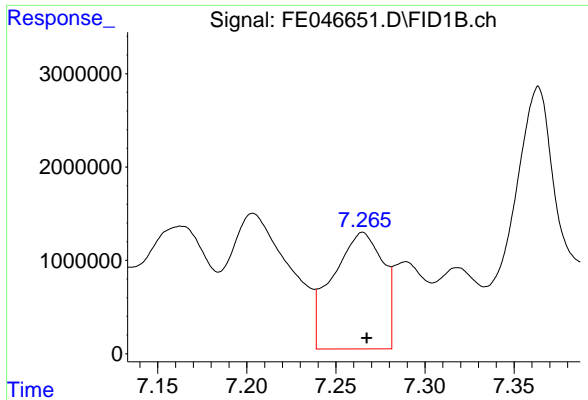
#3 A~Naphthalene (C11.7)

R.T.: 6.181 min
 Delta R.T.: 0.012 min
 Response: 22839355
 Conc: 133.56 ug/ml



#4 n-Dodecane (C12)

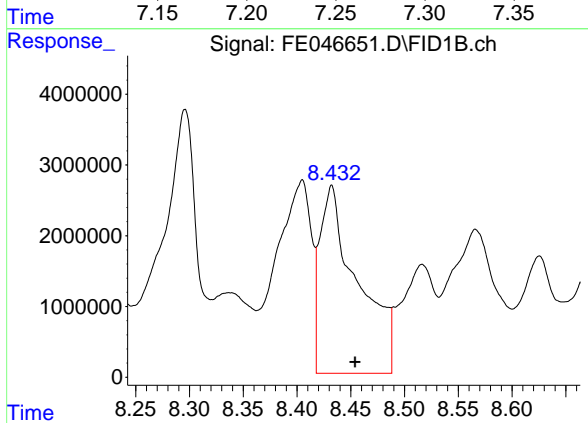
R.T.: 6.644 min
 Delta R.T.: 0.017 min
 Response: 15699964
 Conc: 94.91 ug/ml



#5 A~2-methylnaphthalene (C12.89)

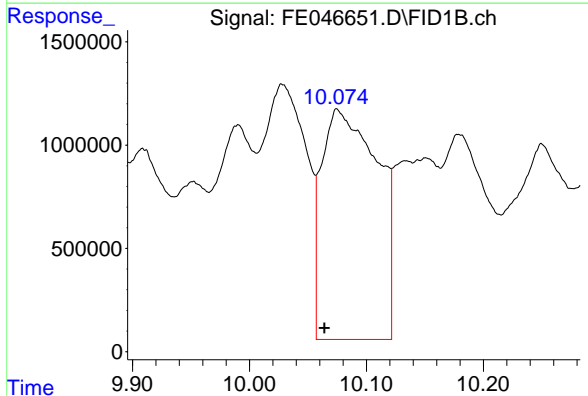
R.T.: 7.265 min
 Delta R.T.: -0.002 min
 Response: 24514777
 Conc: 153.71 ug/ml

Instrument :
 FID_E
 ClientSampleId :
 72-11929-E2



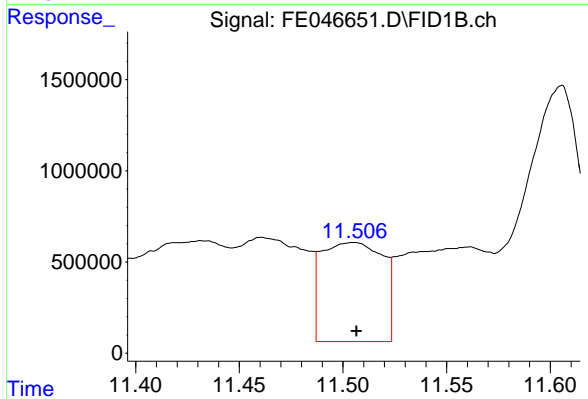
#6 n-Tetradecane (C14)

R.T.: 8.432 min
 Delta R.T.: -0.022 min
 Response: 64667478
 Conc: 394.56 ug/ml



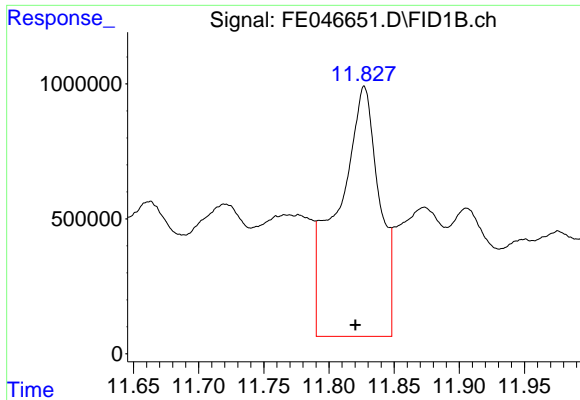
#7 n-Hexadecane (C16)

R.T.: 10.075 min
 Delta R.T.: 0.011 min
 Response: 36928255
 Conc: 216.11 ug/ml



#8 n-Octadecane (C18)

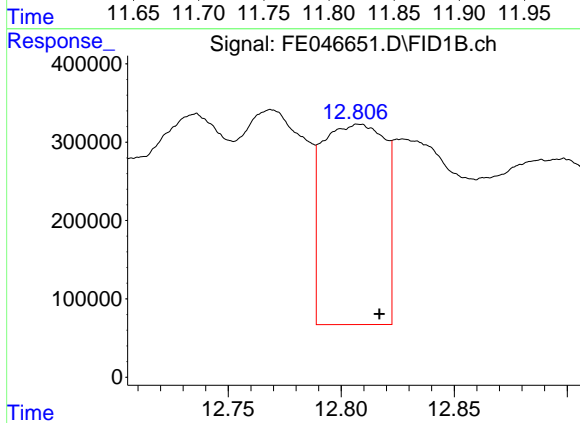
R.T.: 11.505 min
 Delta R.T.: -0.001 min
 Response: 11180826
 Conc: 64.13 ug/ml



#9 ortho-Terphenyl (SURR)

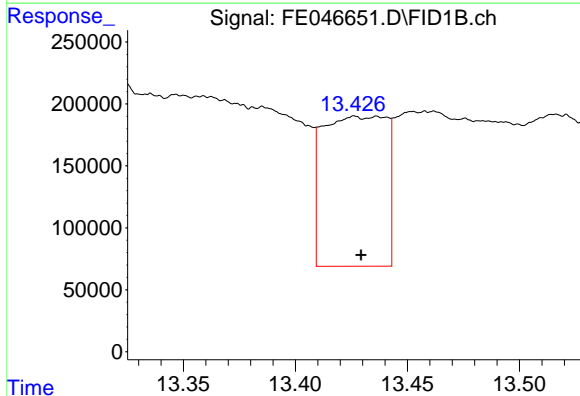
R.T.: 11.827 min
 Delta R.T.: 0.007 min
 Response: 20218962
 Conc: 109.35 ug/ml

Instrument :
 FID_E
 ClientSampleId :
 72-11929-E2



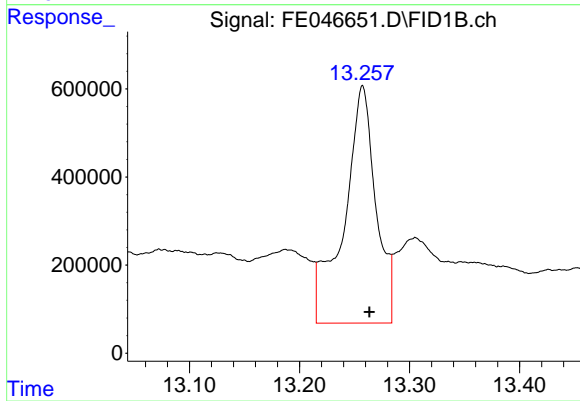
#10 n-Eicosane (C20)

R.T.: 12.808 min
 Delta R.T.: -0.009 min
 Response: 4925134
 Conc: 29.01 ug/ml



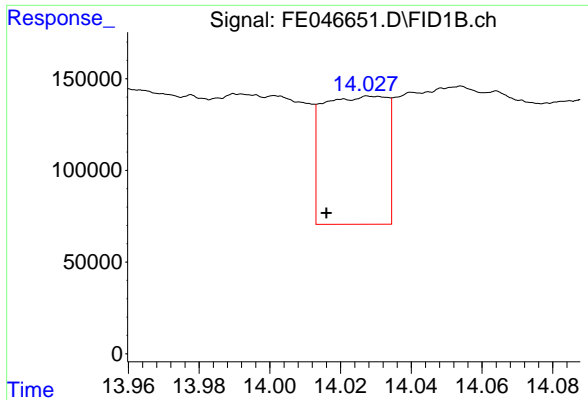
#11 n-Heneicosane (C21)

R.T.: 13.426 min
 Delta R.T.: -0.003 min
 Response: 2391753
 Conc: 14.34 ug/ml



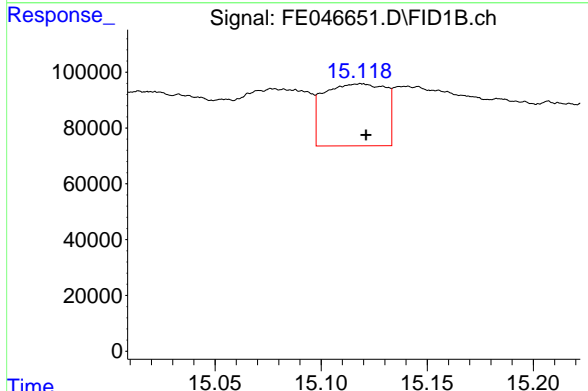
#12 1-chlorooctadecane (SURR)

R.T.: 13.257 min
 Delta R.T.: -0.006 min
 Response: 10832927
 Conc: 76.14 ug/ml

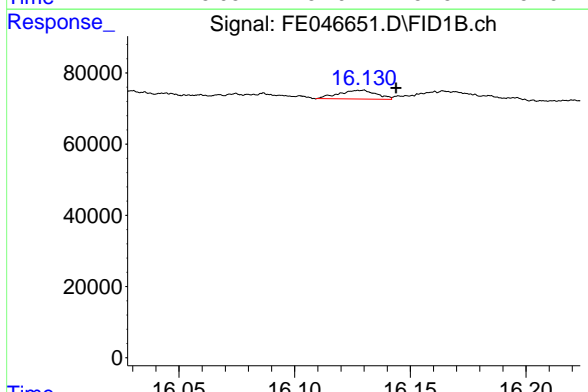


#13 n-Docosane (C22)
 R.T.: 14.029 min
 Delta R.T.: 0.013 min
 Response: 875718
 Conc: 5.29 ug/ml

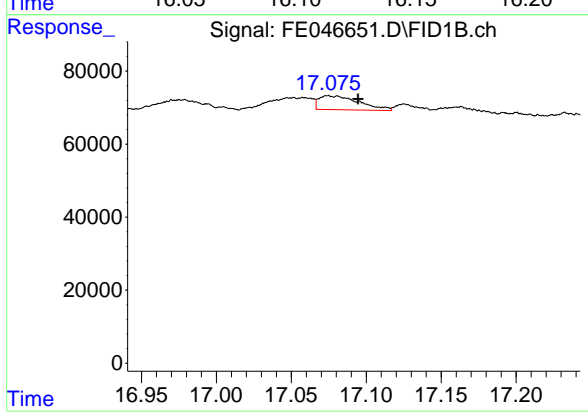
Instrument : FID_E
 ClientSampleId : 72-11929-E2



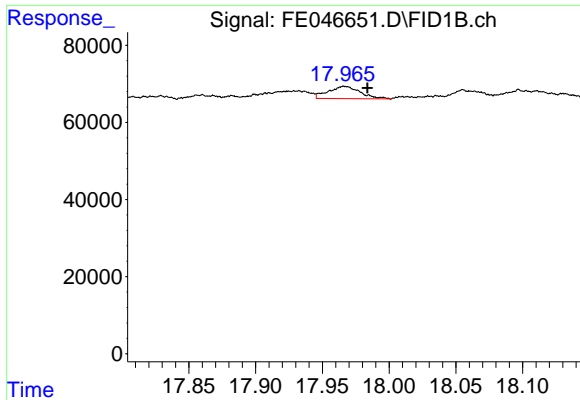
#14 n-Tetracosane (C24)
 R.T.: 15.119 min
 Delta R.T.: -0.002 min
 Response: 448038
 Conc: 2.72 ug/ml



#15 n-Hexacosane (C26)
 R.T.: 16.129 min
 Delta R.T.: -0.015 min
 Response: 27722
 Conc: 0.17 ug/ml



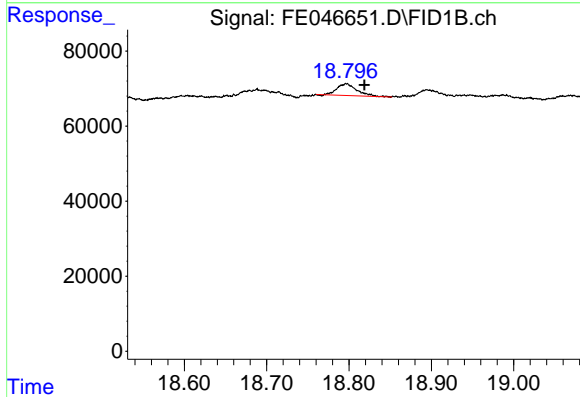
#16 n-Octacosane (C28)
 R.T.: 17.075 min
 Delta R.T.: -0.020 min
 Response: 71171
 Conc: 0.45 ug/ml



#17 n-Tricontane (C30)

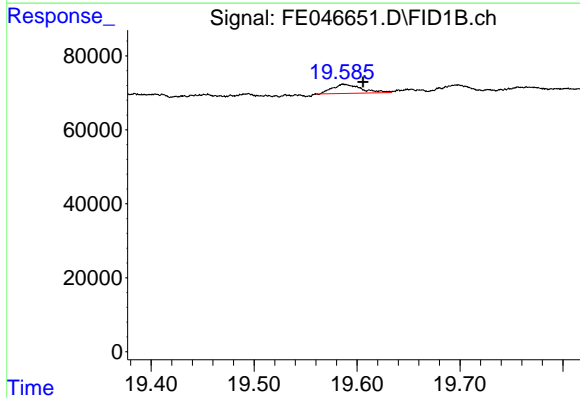
R.T.: 17.966 min
 Delta R.T.: -0.017 min
 Response: 52547
 Conc: 0.34 ug/ml

Instrument :
 FID_E
 ClientSampleId :
 72-11929-E2



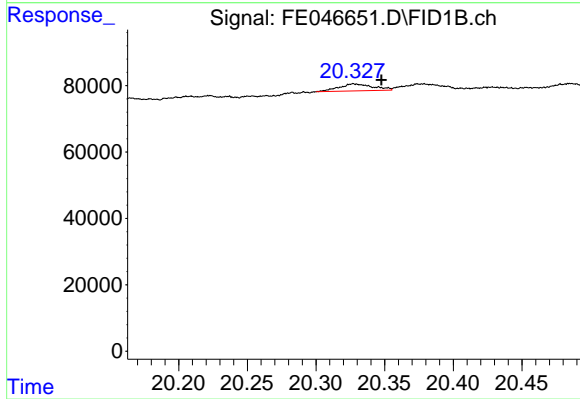
#18 n-Dotriacontane (C32)

R.T.: 18.797 min
 Delta R.T.: -0.022 min
 Response: 51981
 Conc: 0.34 ug/ml



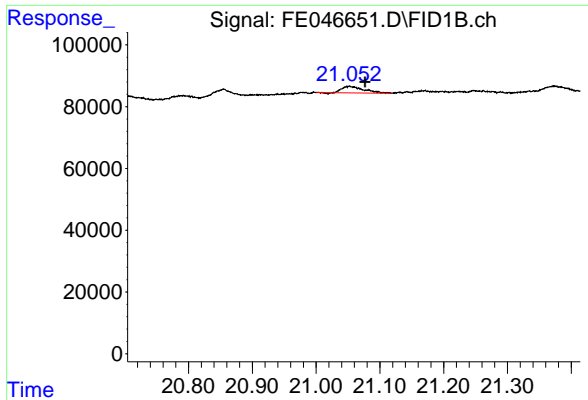
#19 n-Tetratriacontane (C34)

R.T.: 19.587 min
 Delta R.T.: -0.019 min
 Response: 48472
 Conc: 0.34 ug/ml



#20 n-Hexatriacontane (C36)

R.T.: 20.328 min
 Delta R.T.: -0.019 min
 Response: 36336
 Conc: 0.26 ug/ml



#21 n-Octatriacontane (C38)

R.T.: 21.052 min
Delta R.T.: -0.024 min
Response: 49988
Conc: 0.39 ug/ml

Instrument :
FID_E
ClientSampleId :
72-11929-E2