

Data Path : Z:\pestpcbsrv\HPCHEM1\FID_E\Data\FE021024AL\
 Data File : FE046670.D
 Signal(s) : FID1B.ch
 Acq On : 10 Feb 2024 13:16
 Operator : YP\AJ
 Sample : MECL2
 Misc :
 ALS Vial : 1 Sample Multiplier: 1

Integration File: sample.E
 Quant Time: Feb 11 23:59:54 2024
 Quant Method : Z:\pestpcbsrv\HPCHEM1\FID_E\methods\Aliphatic EPH 012524.M
 Quant Title : GC Extractables
 QLast Update : Thu Jan 25 14:56:03 2024
 Response via : Initial Calibration
 Integrator: ChemStation

Volume Inj. : 1 ul
 Signal Phase : Rxi-1ms
 Signal Info : 20M x 0.18mm x 0.18um

Compound	R.T.	Response	Conc Units

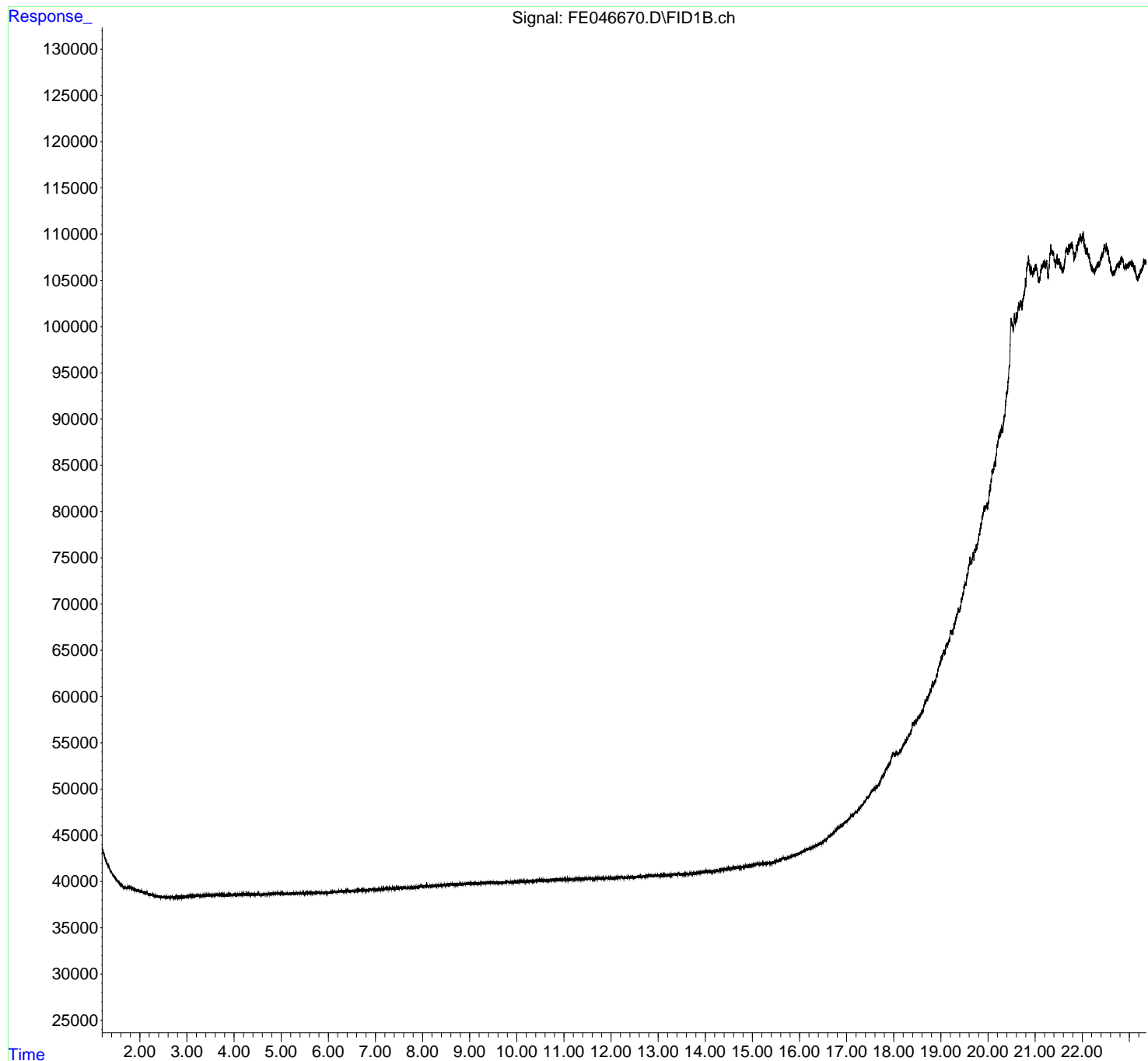
System Monitoring Compounds			
Target Compounds			

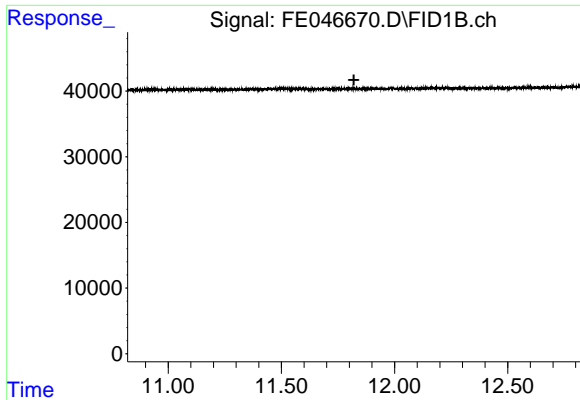
(f)=RT Delta > 1/2 Window (m)=manual int.

Data Path : Z:\pestpcbsrv\HPCHEM1\FID_E\Data\FE021024AL\
Data File : FE046670.D
Signal(s) : FID1B.ch
Acq On : 10 Feb 2024 13:16
Operator : YP\AJ
Sample : MECL2
Misc :
ALS Vial : 1 Sample Multiplier: 1

Integration File: sample.E
Quant Time: Feb 11 23:59:54 2024
Quant Method : Z:\pestpcbsrv\HPCHEM1\FID_E\methods\Aliphatic EPH 012524.M
Quant Title : GC Extractables
QLast Update : Thu Jan 25 14:56:03 2024
Response via : Initial Calibration
Integrator: ChemStation

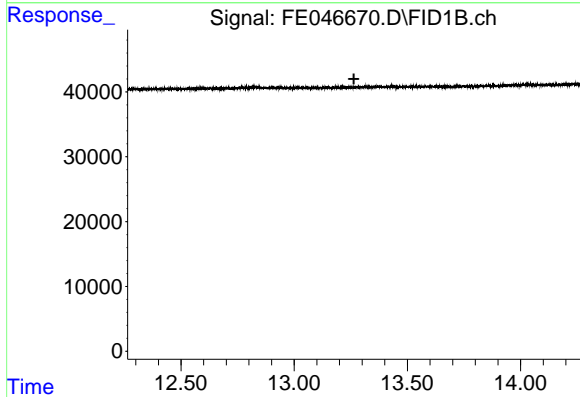
Volume Inj. : 1 ul
Signal Phase : Rxi-1ms
Signal Info : 20M x 0.18mm x 0.18um





#9 ortho-Terphenyl (SURR)

R.T.: 0.000 min
Exp R.T. : 11.820 min
Response: 0
Conc: N.D.



#12 1-chlorooctadecane (SURR)

R.T.: 0.000 min
Exp R.T. : 13.264 min
Response: 0
Conc: N.D.