

Data Path : Z:\pestpcbsrv\HPCHEM1\FID_E\Data\FE021024AL\
 Data File : FE046695.D
 Signal(s) : FID1B.ch
 Acq On : 11 Feb 2024 01:50
 Operator : YP\AJ
 Sample : P1391-16
 Misc :
 ALS Vial : 23 Sample Multiplier: 1

Integration File: sample.E
 Quant Time: Feb 12 00:05:30 2024
 Quant Method : Z:\pestpcbsrv\HPCHEM1\FID_E\methods\Aliphatic EPH 012524.M
 Quant Title : GC Extractables
 QLast Update : Thu Jan 25 14:56:03 2024
 Response via : Initial Calibration
 Integrator: ChemStation

Volume Inj. : 1 ul
 Signal Phase : Rxi-1ms
 Signal Info : 20M x 0.18mm x 0.18um

Compound	R.T.	Response	Conc Units

System Monitoring Compounds			
9) S ortho-Terphenyl (SURR)	11.808	5715601	30.910 ug/ml
Spiked Amount	50.000	Recovery	= 61.82%
12) S 1-chlorooctadecane (S...	13.250	4497617	31.612 ug/ml
Spiked Amount	50.000	Recovery	= 63.22%

Target Compounds

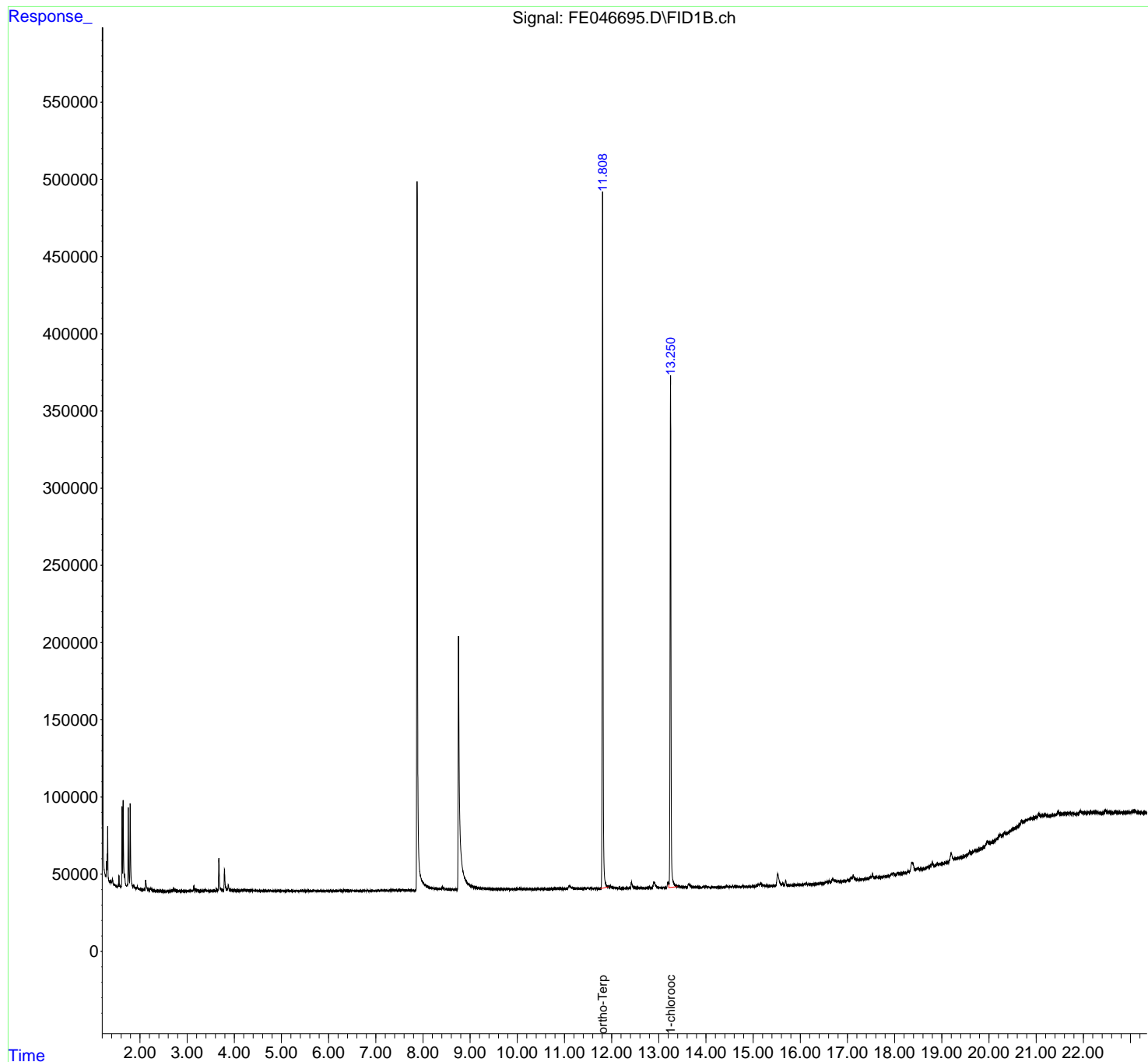
(f)=RT Delta > 1/2 Window

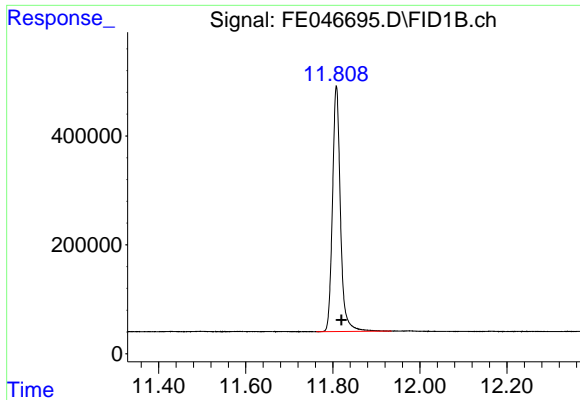
(m)=manual int.

Data Path : Z:\pestpcbsrv\HPCHEM1\FID_E\Data\FE021024AL\
Data File : FE046695.D
Signal(s) : FID1B.ch
Acq On : 11 Feb 2024 01:50
Operator : YP\AJ
Sample : P1391-16
Misc :
ALS Vial : 23 Sample Multiplier: 1

Integration File: sample.E
Quant Time: Feb 12 00:05:30 2024
Quant Method : Z:\pestpcbsrv\HPCHEM1\FID_E\methods\Aliphatic EPH 012524.M
Quant Title : GC Extractables
QLast Update : Thu Jan 25 14:56:03 2024
Response via : Initial Calibration
Integrator: ChemStation

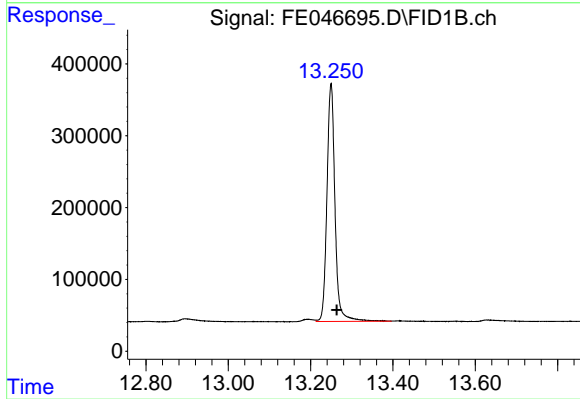
Volume Inj. : 1 ul
Signal Phase : Rxi-1ms
Signal Info : 20M x 0.18mm x 0.18um





#9 ortho-Terphenyl (SURR)

R.T.: 11.808 min
Delta R.T.: -0.012 min
Response: 5715601
Conc: 30.91 ug/ml



#12 1-chlorooctadecane (SURR)

R.T.: 13.250 min
Delta R.T.: -0.014 min
Response: 4497617
Conc: 31.61 ug/ml