

Data Path : Z:\pestpcbsrv\HPCHEM1\FID_E\Data\FE021024AL\
 Data File : FE046698.D
 Signal(s) : FID1B.ch
 Acq On : 11 Feb 2024 03:20
 Operator : YP\AJ
 Sample : P1435-05
 Misc :
 ALS Vial : 26 Sample Multiplier: 1

Integration File: autoint1.e
 Quant Time: Feb 12 00:06:12 2024
 Quant Method : Z:\pestpcbsrv\HPCHEM1\FID_E\methods\Aliphatic EPH 012524.M
 Quant Title : GC Extractables
 QLast Update : Thu Jan 25 14:56:03 2024
 Response via : Initial Calibration
 Integrator: ChemStation

Volume Inj. : 1 ul
 Signal Phase : Rxi-1ms
 Signal Info : 20M x 0.18mm x 0.18um

Compound	R.T.	Response	Conc Units

System Monitoring Compounds			
9) S ortho-Terphenyl (SURR)	11.808	6247147	33.785 ug/ml
Spiked Amount	50.000	Recovery	= 67.57%
12) S 1-chlorooctadecane (S...	13.250	5042316	35.441 ug/ml
Spiked Amount	50.000	Recovery	= 70.88%
Target Compounds			
6) T n-Tetradecane (C14)	8.411	23347	0.142 ug/ml
10) T n-Eicosane (C20)	12.868f	23175	0.136 ug/ml
14) T n-Tetracosane (C24)	15.155	24034	0.146 ug/ml
15) T n-Hexacosane (C26)	16.127	39819	0.247 ug/ml
16) T n-Octacosane (C28)	17.076	25405	0.162 ug/ml
17) T n-Tricontane (C30)	17.968	37901	0.242 ug/ml
18) T n-Dotriacontane (C32)	18.797	61072	0.404 ug/ml

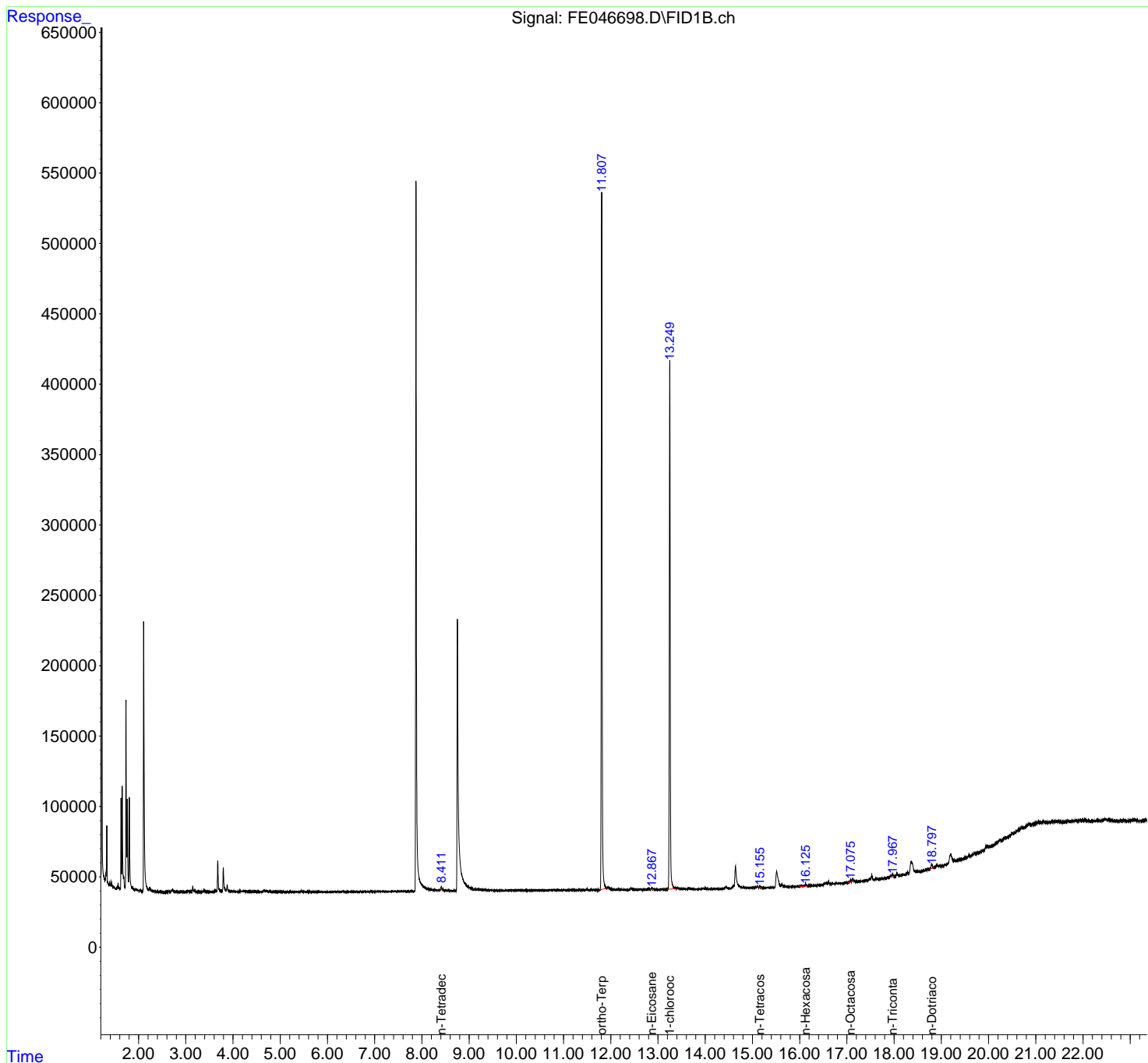
(f)=RT Delta > 1/2 Window

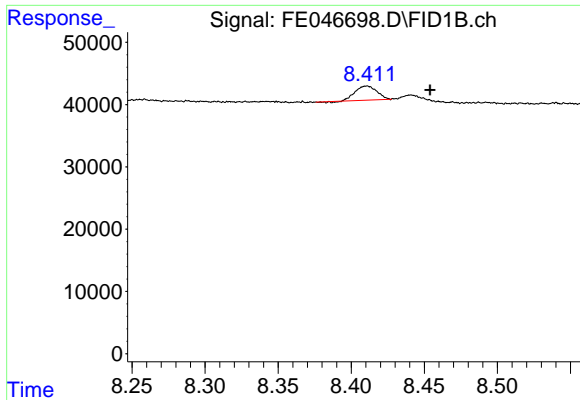
(m)=manual int.

Data Path : Z:\pestpcbsrv\HPCHEM1\FID_E\Data\FE021024AL\
Data File : FE046698.D
Signal(s) : FID1B.ch
Acq On : 11 Feb 2024 03:20
Operator : YP\AJ
Sample : P1435-05
Misc :
ALS Vial : 26 Sample Multiplier: 1

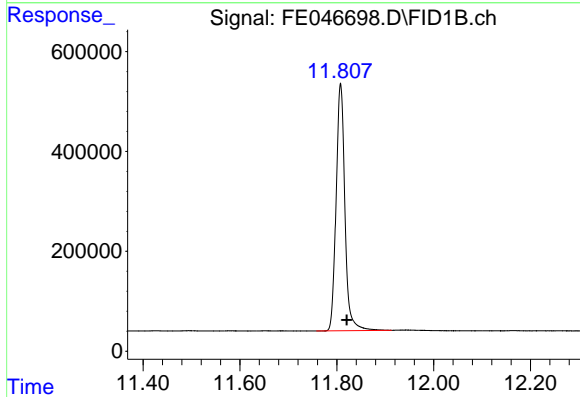
Integration File: autoint1.e
Quant Time: Feb 12 00:06:12 2024
Quant Method : Z:\pestpcbsrv\HPCHEM1\FID_E\methods\Aliphatic EPH 012524.M
Quant Title : GC Extractables
QLast Update : Thu Jan 25 14:56:03 2024
Response via : Initial Calibration
Integrator: ChemStation

Volume Inj. : 1 ul
Signal Phase : Rxi-1ms
Signal Info : 20M x 0.18mm x 0.18um

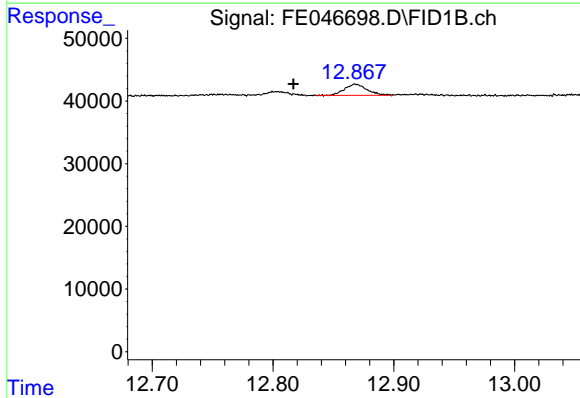




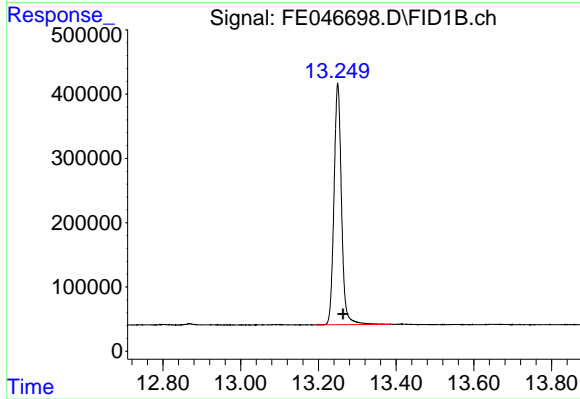
#6 n-Tetradecane (C14)
R.T.: 8.411 min
Delta R.T.: -0.043 min
Response: 23347
Conc: 0.14 ug/ml



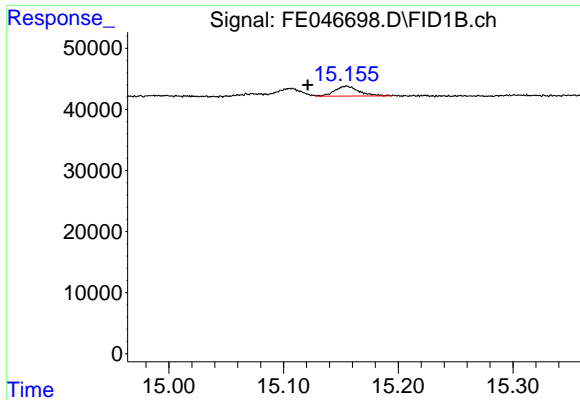
#9 ortho-Terphenyl (SURR)
R.T.: 11.808 min
Delta R.T.: -0.013 min
Response: 6247147
Conc: 33.78 ug/ml



#10 n-Eicosane (C20)
R.T.: 12.868 min
Delta R.T.: 0.052 min
Response: 23175
Conc: 0.14 ug/ml

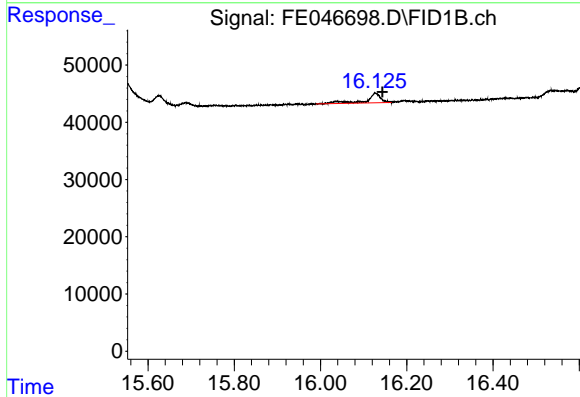


#12 1-chlorooctadecane (SURR)
R.T.: 13.250 min
Delta R.T.: -0.014 min
Response: 5042316
Conc: 35.44 ug/ml



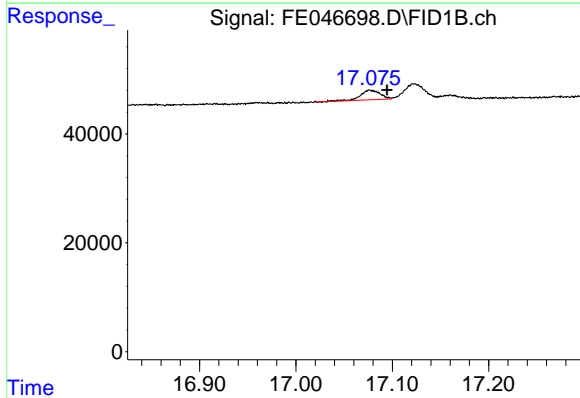
#14 n-Tetracosane (C24)

R.T.: 15.155 min
Delta R.T.: 0.034 min
Response: 24034
Conc: 0.15 ug/ml



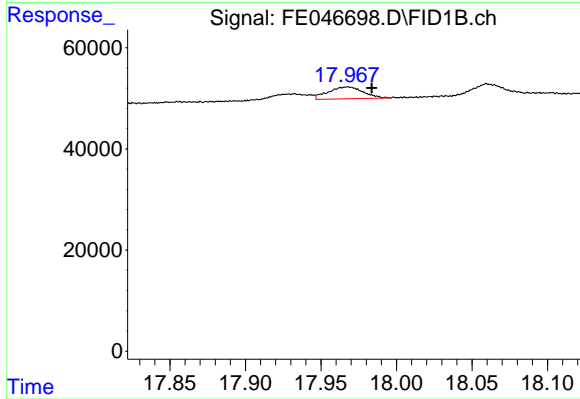
#15 n-Hexacosane (C26)

R.T.: 16.127 min
Delta R.T.: -0.017 min
Response: 39819
Conc: 0.25 ug/ml



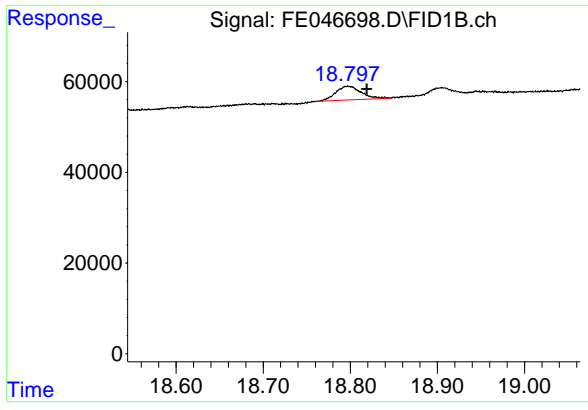
#16 n-Octacosane (C28)

R.T.: 17.076 min
Delta R.T.: -0.018 min
Response: 25405
Conc: 0.16 ug/ml



#17 n-Tricontane (C30)

R.T.: 17.968 min
Delta R.T.: -0.016 min
Response: 37901
Conc: 0.24 ug/ml



#18 n-Dotriacontane (C32)

R.T.: 18.797 min
Delta R.T.: -0.022 min
Response: 61072
Conc: 0.40 ug/ml