

Data Path : Z:\pestpcbsrv\HPCHEM1\FID_E\Data\FE021424\
 Data File : FE046806.D
 Signal(s) : FID1B.ch
 Acq On : 15 Feb 2024 09:22
 Operator : YP\AJ
 Sample : 50 PPM TRPH STD
 Misc :
 ALS Vial : 17 Sample Multiplier: 1

Integration File: autoint1.e
 Quant Time: Feb 16 00:19:28 2024
 Quant Method : Z:\pestpcbsrv\HPCHEM1\FID_E\methods\FE021424.M
 Quant Title :
 QLast Update : Wed Feb 14 16:03:20 2024
 Response via : Initial Calibration
 Integrator: ChemStation

Volume Inj. : 1uL
 Signal Phase : Rxi-1ms
 Signal Info : 20mx0.18mmx0.18um

Compound	R.T.	Response	Conc Units

System Monitoring Compounds			
9) S TETRACOSANE-d50 (SURR...	14.894	6201759	50.411 ug/ml
Target Compounds			
1) N-OCTANE	1.930	7266509	50.141 ug/ml
2) N-DECANE	4.439	6721259	51.642 ug/ml
3) N-DODECANE	6.609	6977582	52.930 ug/ml
4) N-TETRADECANE	8.435	6558793	50.989 ug/ml
5) N-HEXADECANE	10.043	6572610	49.832 ug/ml
6) N-OCTADECANE	11.486	7234398	51.124 ug/ml
7) N-EICOSANE	12.797	7025549	50.654 ug/ml
8) N-DOCOSANE	13.995	6857389	50.461 ug/ml
10) N-TETRACOSANE	15.098	6771202	50.348 ug/ml
11) N-HEXACOSANE	16.120	6641916	50.381 ug/ml
12) N-OCTACOSANE	17.070	6586855	50.461 ug/ml
13) N-TRIACONTANE	17.957	6533489	50.347 ug/ml
14) N-DOTRIACONTANE	18.791	6287569	50.214 ug/ml
15) N-TETRATRIACONTANE	19.576	5094553	49.497 ug/ml
16) N-HEXATRIACONTANE	20.315	4077786	49.966 ug/ml
17) N-OCTATRIACONTANE	21.039	3690311	48.049 ug/ml
18) N-TETRACONTANE	21.915	3804932	49.236 ug/ml

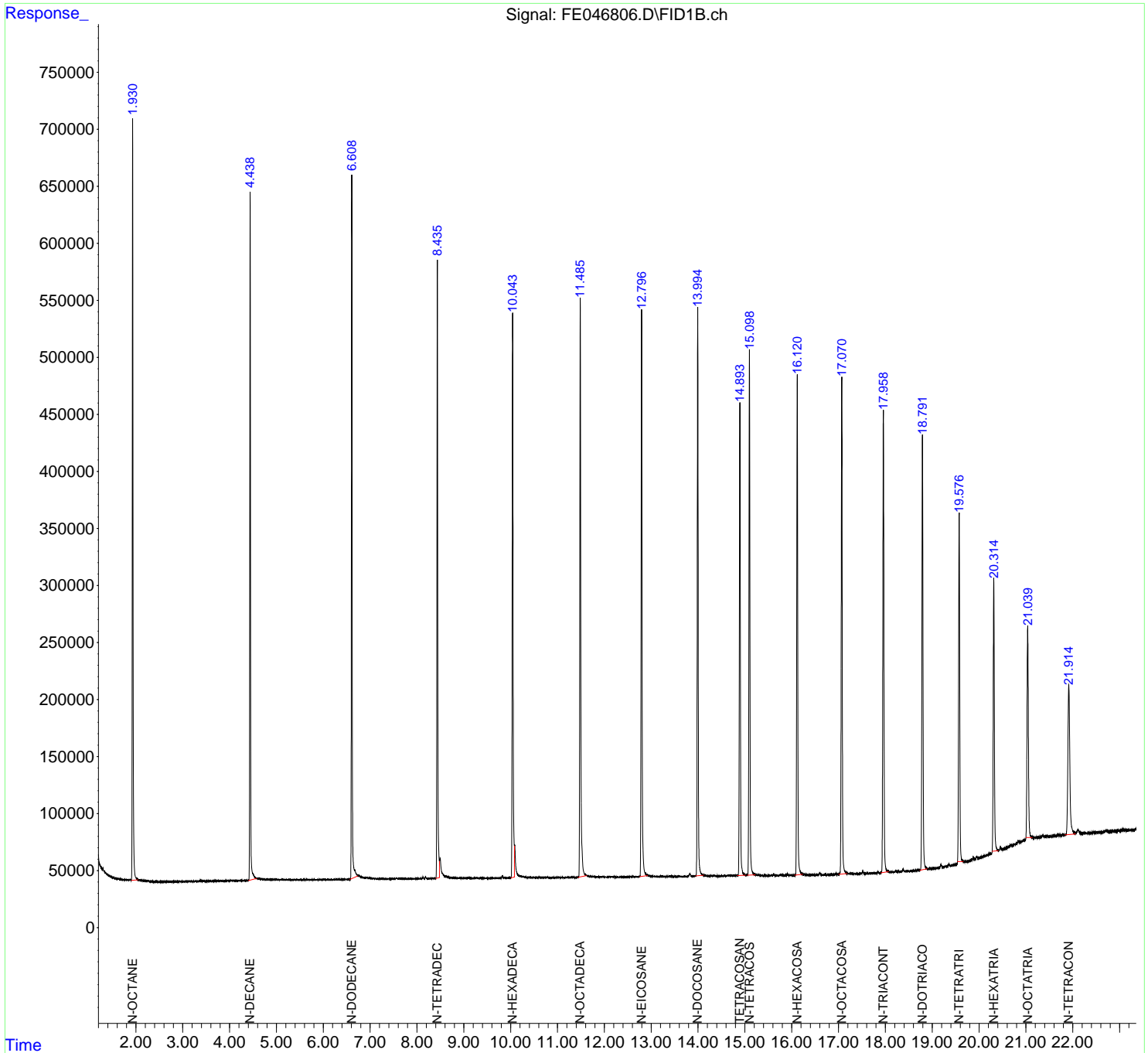
(f)=RT Delta > 1/2 Window

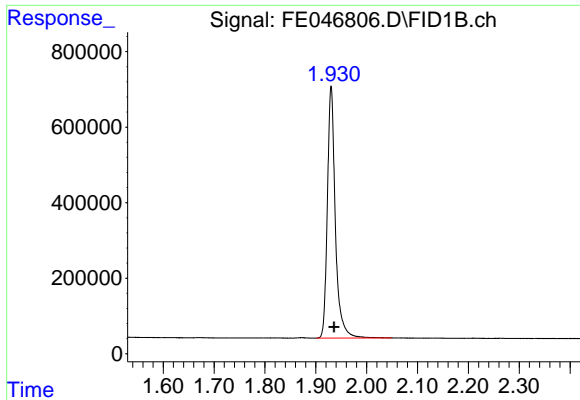
(m)=manual int.

Data Path : Z:\pestpcbsrv\HPCHEM1\FID_E\Data\FE021424\
 Data File : FE046806.D
 Signal(s) : FID1B.ch
 Acq On : 15 Feb 2024 09:22
 Operator : YP\AJ
 Sample : 50 PPM TRPH STD
 Misc :
 ALS Vial : 17 Sample Multiplier: 1

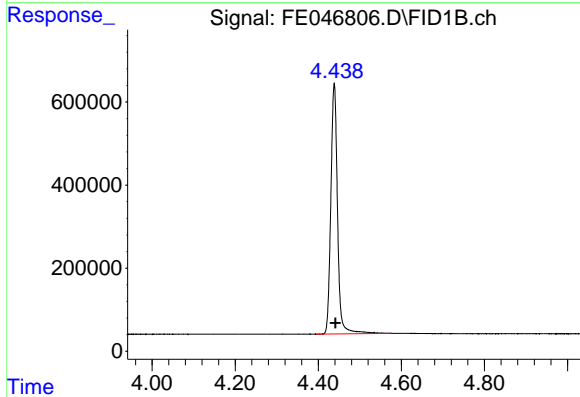
Integration File: autoint1.e
 Quant Time: Feb 16 00:19:28 2024
 Quant Method : Z:\pestpcbsrv\HPCHEM1\FID_E\methods\FE021424.M
 Quant Title :
 QLast Update : Wed Feb 14 16:03:20 2024
 Response via : Initial Calibration
 Integrator: ChemStation

Volume Inj. : 1uL
 Signal Phase : Rxi-1ms
 Signal Info : 20mx0.18mmx0.18um

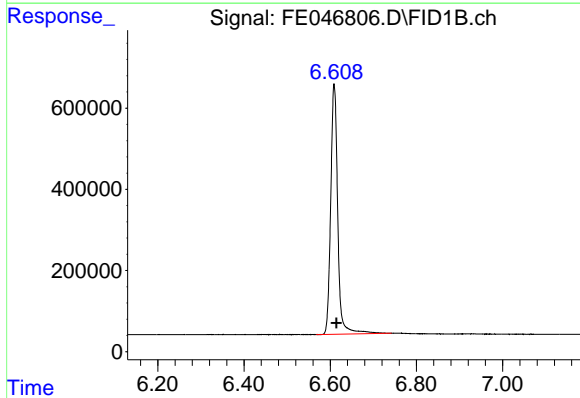




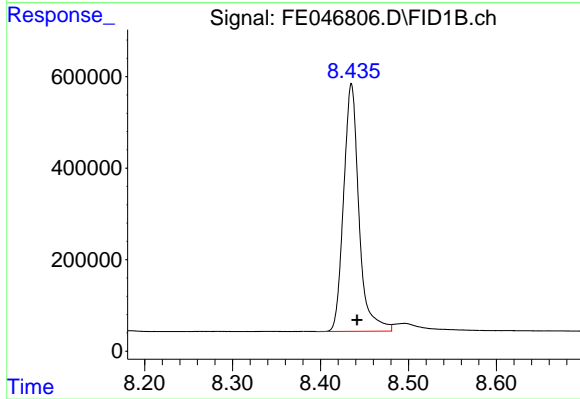
#1 N-OCTANE
R.T.: 1.930 min
Delta R.T.: -0.006 min
Response: 7266509
Conc: 50.14 ug/ml



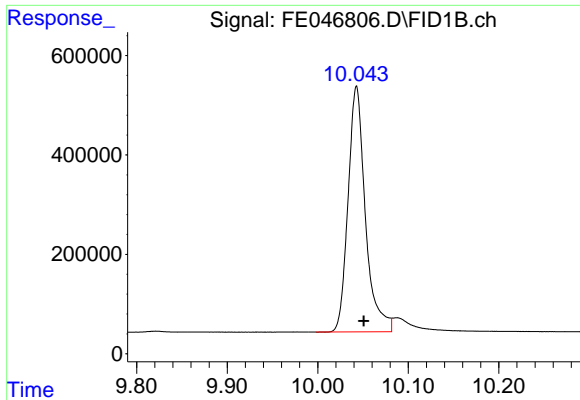
#2 N-DECANE
R.T.: 4.439 min
Delta R.T.: -0.003 min
Response: 6721259
Conc: 51.64 ug/ml



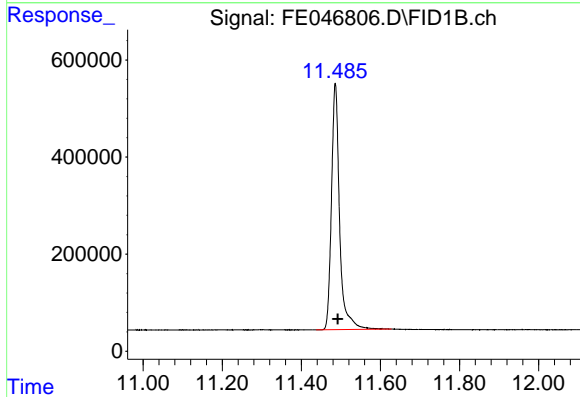
#3 N-DODECANE
R.T.: 6.609 min
Delta R.T.: -0.005 min
Response: 6977582
Conc: 52.93 ug/ml



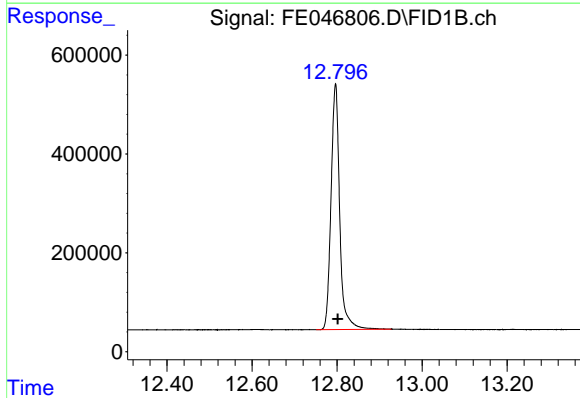
#4 N-TETRADECANE
R.T.: 8.435 min
Delta R.T.: -0.006 min
Response: 6558793
Conc: 50.99 ug/ml



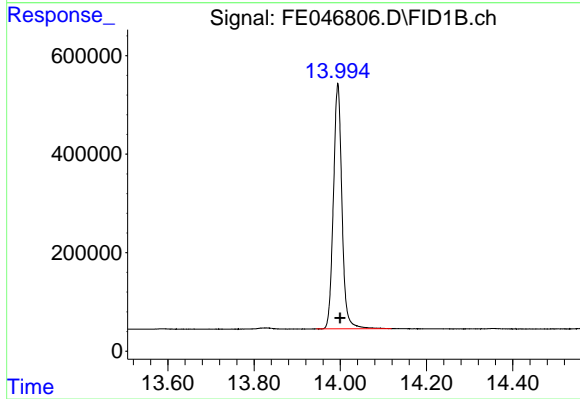
#5 N-HEXADECANE
R.T.: 10.043 min
Delta R.T.: -0.008 min
Response: 6572610
Conc: 49.83 ug/ml



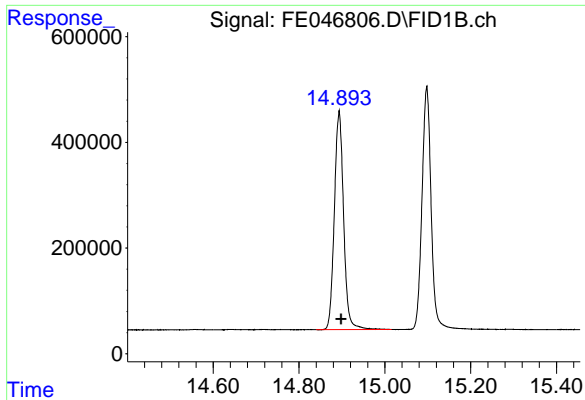
#6 N-OCTADECANE
R.T.: 11.486 min
Delta R.T.: -0.006 min
Response: 7234398
Conc: 51.12 ug/ml



#7 N-EICOSANE
R.T.: 12.797 min
Delta R.T.: -0.005 min
Response: 7025549
Conc: 50.65 ug/ml

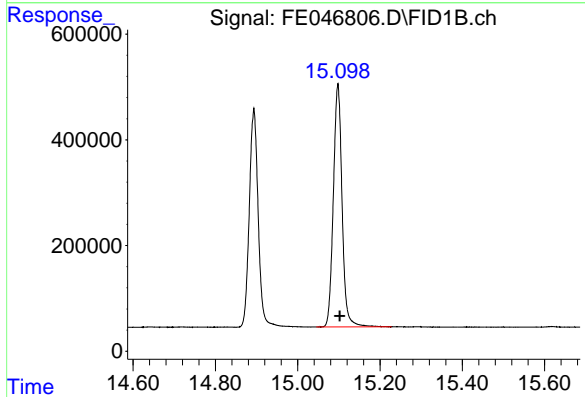


#8 N-DOCOSANE
R.T.: 13.995 min
Delta R.T.: -0.005 min
Response: 6857389
Conc: 50.46 ug/ml



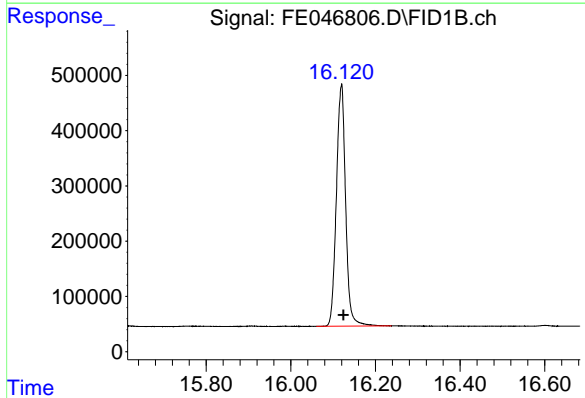
#9 TETRACOSANE-d50 (SURROGATE)

R.T.: 14.894 min
Delta R.T.: -0.004 min
Response: 6201759
Conc: 50.41 ug/ml



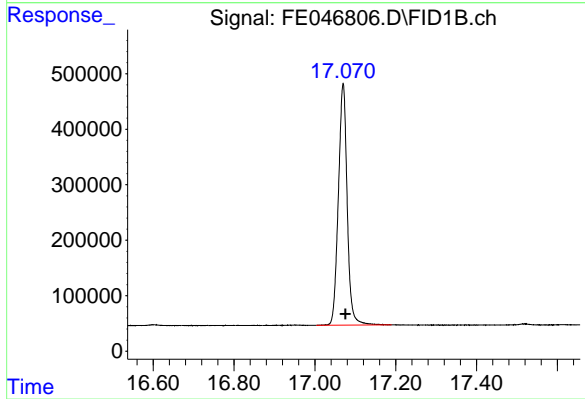
#10 N-TETRACOSANE

R.T.: 15.098 min
Delta R.T.: -0.004 min
Response: 6771202
Conc: 50.35 ug/ml



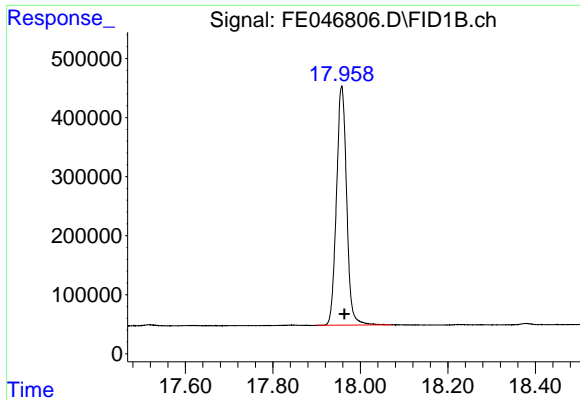
#11 N-HEXACOSANE

R.T.: 16.120 min
Delta R.T.: -0.004 min
Response: 6641916
Conc: 50.38 ug/ml

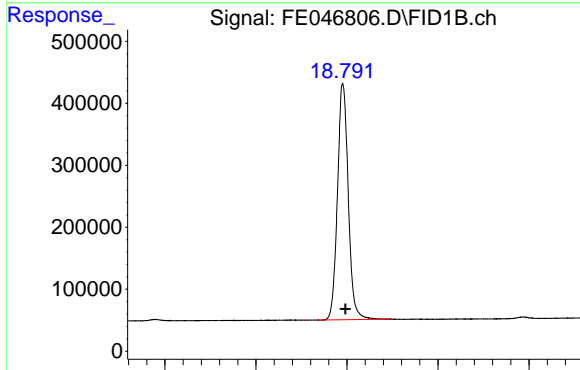


#12 N-OCTACOSANE

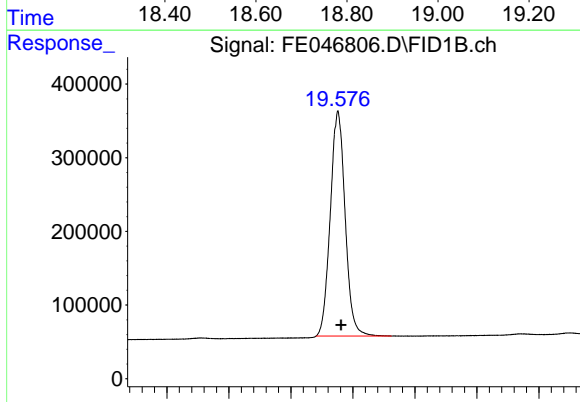
R.T.: 17.070 min
Delta R.T.: -0.005 min
Response: 6586855
Conc: 50.46 ug/ml



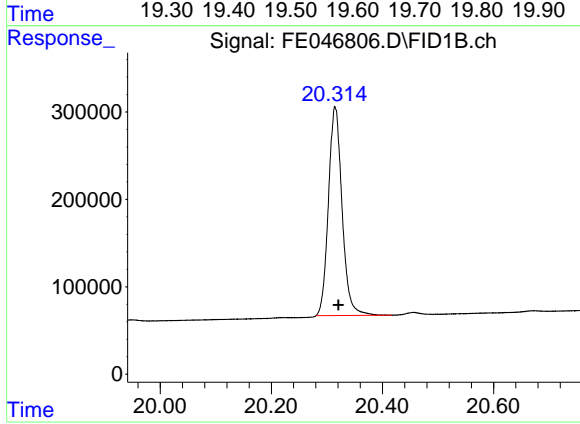
#13 N-TRIACONTANE
R.T.: 17.957 min
Delta R.T.: -0.006 min
Response: 6533489
Conc: 50.35 ug/ml



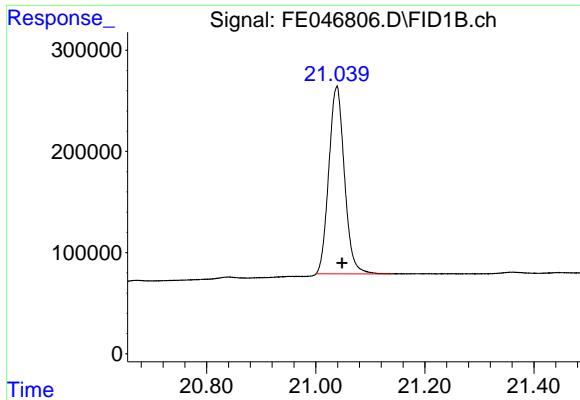
#14 N-DOTRIACONTANE
R.T.: 18.791 min
Delta R.T.: -0.006 min
Response: 6287569
Conc: 50.21 ug/ml



#15 N-TETRATRIACONTANE
R.T.: 19.576 min
Delta R.T.: -0.005 min
Response: 5094553
Conc: 49.50 ug/ml

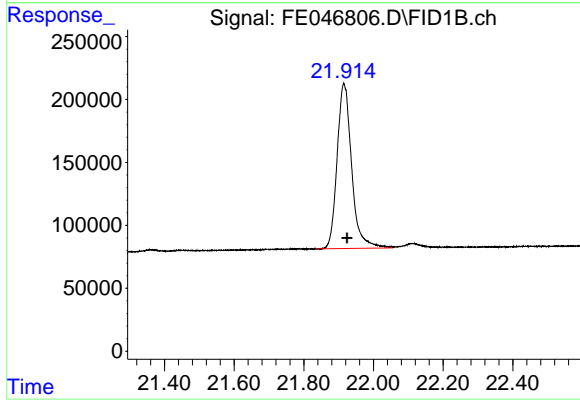


#16 N-HEXATRIACONTANE
R.T.: 20.315 min
Delta R.T.: -0.006 min
Response: 4077786
Conc: 49.97 ug/ml



#17 N-OCTATRIACONTANE

R.T.: 21.039 min
Delta R.T.: -0.010 min
Response: 3690311
Conc: 48.05 ug/ml



#18 N-TETRACONTANE

R.T.: 21.915 min
Delta R.T.: -0.009 min
Response: 3804932
Conc: 49.24 ug/ml