

Data Path : Z:\pestpcbsrv\HPCHEM1\FID_E\Data\FE021425AL\
 Data File : FE052397.D
 Signal(s) : FID1B.ch
 Acq On : 14 Feb 2025 19:06
 Operator : YP\AJ
 Sample : 20 PPM ALIPHATIC HC STD
 Misc :
 ALS Vial : 2 Sample Multiplier: 1

Instrument :
 FID_E
ClientSampleId :
 20 PPM ALIPHATIC HC STD

Manual Integrations
APPROVED

Reviewed By :Yogesh Patel 02/17/2025
 Supervised By :Ankita Jodhani 02/17/2025

Integration File: autoint1.e
 Quant Time: Feb 14 22:01:37 2025
 Quant Method : Z:\pestpcbsrv\HPCHEM1\FID_E\methods\Aliphatic EPH 021325.M
 Quant Title : GC Extractables
 QLast Update : Fri Feb 14 00:50:00 2025
 Response via : Initial Calibration
 Integrator: ChemStation

Volume Inj. : 1 ul
 Signal Phase : Rxi-1ms
 Signal Info : 20M x 0.18mm x 0.18um

Compound	R.T.	Response	Conc Units

System Monitoring Compounds			
9) S ortho-Terphenyl (SURR)	11.915	3599543	19.256 ug/ml
Spiked Amount	50.000	Recovery	= 38.51%
12) S 1-chlorooctadecane (S...	13.361	2680543	19.285 ug/ml
Spiked Amount	50.000	Recovery	= 38.57%
Target Compounds			
1) T n-Nonane (C9)	3.254	3222370	20.993 ug/ml
2) T n-Decane (C10)	4.516	3288136	21.052 ug/ml
3) T A~Naphthalene (C11.7)	6.227	3644514	21.095 ug/ml
4) T n-Dodecane (C12)	6.698	3304149	20.933 ug/ml
5) T A~2-methylnaphthalene...	7.330	3520079	20.959 ug/ml
6) T n-Tetradecane (C14)	8.535	3240365	20.572 ug/ml
7) T n-Hexadecane (C16)	10.150	3296933	20.172 ug/ml
8) T n-Octadecane (C18)	11.600	3275363	19.795 ug/ml
10) T n-Eicosane (C20)	12.915	3113544	19.530 ug/ml
11) T n-Heneicosane (C21)	13.530	3047236	19.450 ug/ml
13) T n-Docosane (C22)	14.118	3010625	19.238 ug/ml
14) T n-Tetracosane (C24)	15.225	2977296	18.931 ug/ml
15) T n-Hexacosane (C26)	16.249	2909617	18.785 ug/ml
16) T n-Octacosane (C28)	17.201	2852206	18.647 ug/ml
17) T n-Tricontane (C30)	18.091	2899479	18.575 ug/ml
18) T n-Dotriacontane (C32)	18.926	2815057	18.397 ug/ml
19) T n-Tetratriacontane (C34)	19.711	2452952	17.242 ug/ml
20) T n-Hexatriacontane (C36)	20.451	2054207	16.482 ug/ml
21) T n-Octatriacontane (C38)	21.196	1907416	17.451 ug/ml
22) T n-Tetracontane (C40)	22.115	1781302	17.709 ug/ml

(f)=RT Delta > 1/2 Window

(m)=manual int.

Data Path : Z:\pestpcbsrv\HPCHEM1\FID_E\Data\FE021425AL\
 Data File : FE052397.D
 Signal(s) : FID1B.ch
 Acq On : 14 Feb 2025 19:06
 Operator : YP\AJ
 Sample : 20 PPM ALIPHATIC HC STD
 Misc :
 ALS Vial : 2 Sample Multiplier: 1

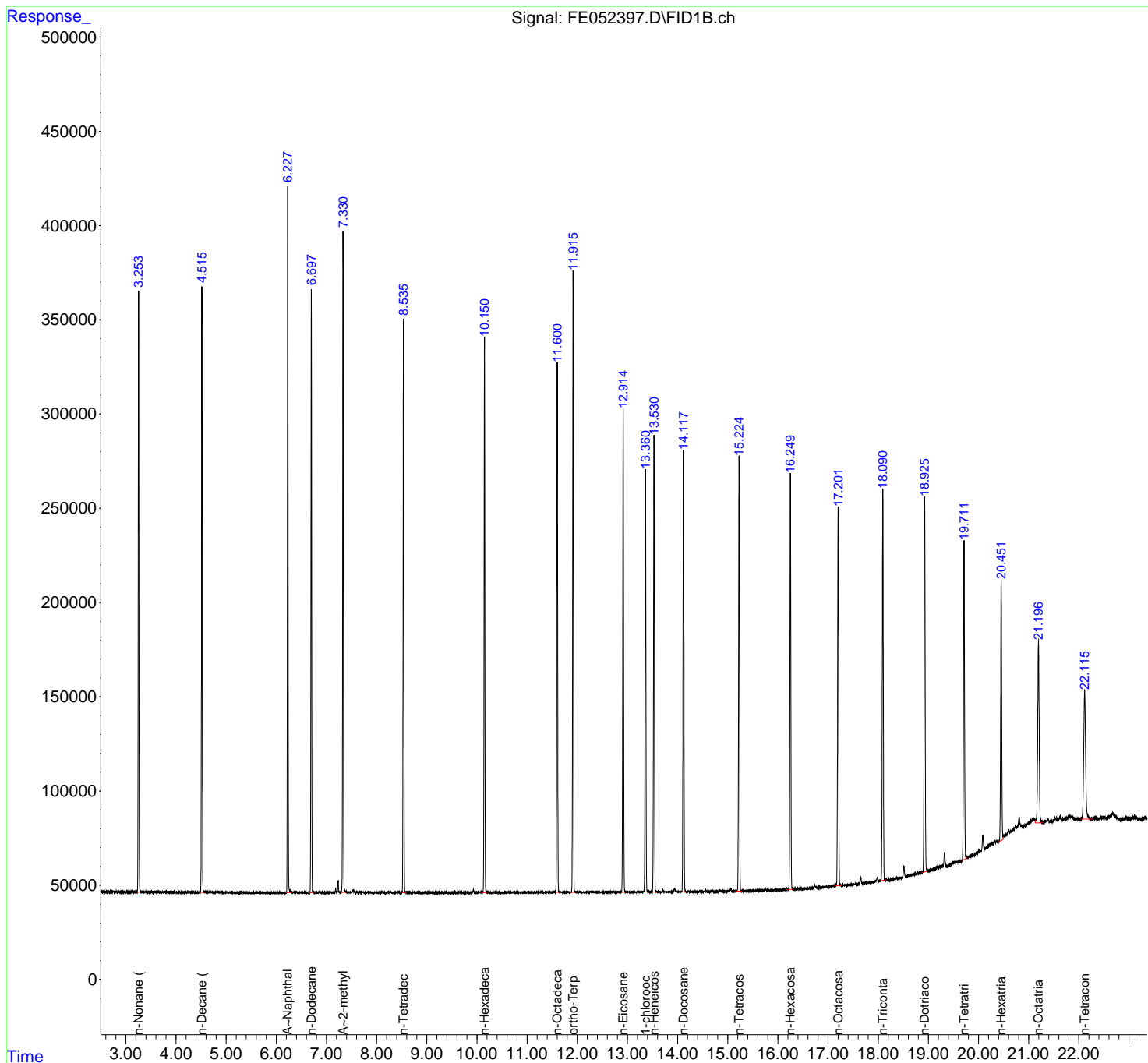
Instrument :
 FID_E
ClientSampleId :
 20 PPM ALIPHATIC HC STD

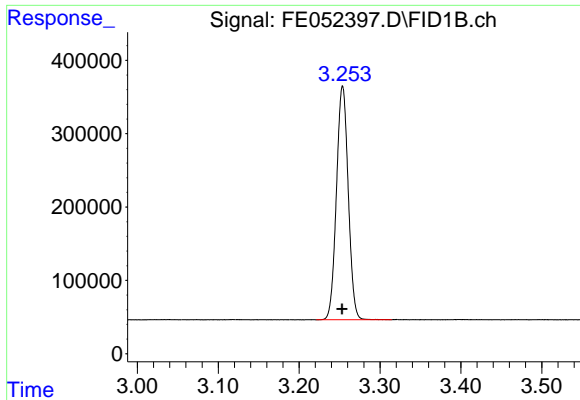
Manual Integrations
APPROVED

Reviewed By :Yogesh Patel 02/17/2025
 Supervised By :Ankita Jodhani 02/17/2025

Integration File: autoint1.e
 Quant Time: Feb 14 22:01:37 2025
 Quant Method : Z:\pestpcbsrv\HPCHEM1\FID_E\methods\Aliphatic EPH 021325.M
 Quant Title : GC Extractables
 QLast Update : Fri Feb 14 00:50:00 2025
 Response via : Initial Calibration
 Integrator: ChemStation

Volume Inj. : 1 ul
 Signal Phase : Rxi-1ms
 Signal Info : 20M x 0.18mm x 0.18um



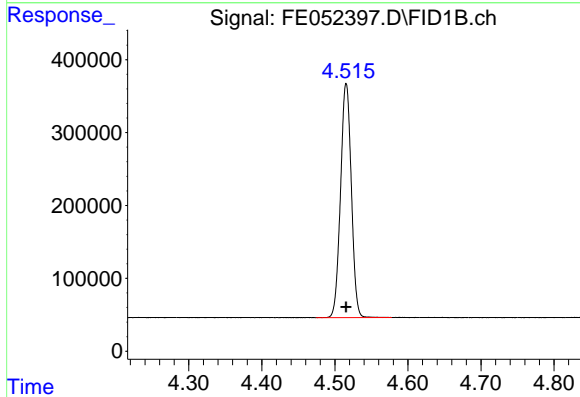


#1 n-Nonane (C9)
 R.T.: 3.254 min
 Delta R.T.: 0.000 min
 Response: 3222370
 Conc: 20.99 ug/ml

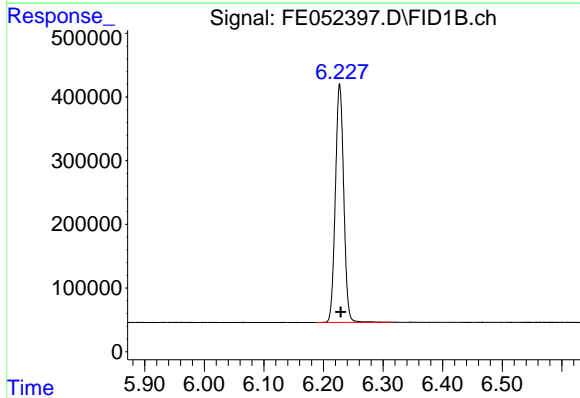
Instrument : FID_E
 ClientSampleId : 20 PPM ALIPHATIC HC STD

Manual Integrations
 APPROVED

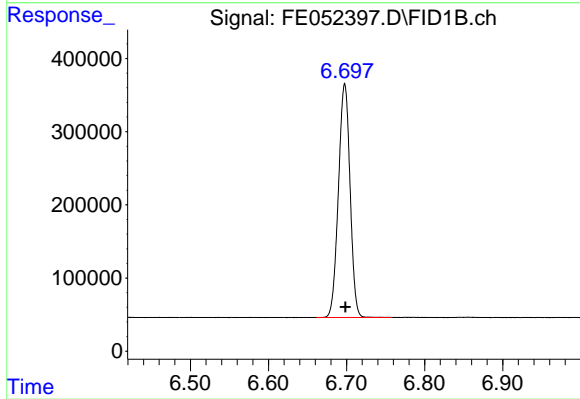
Reviewed By :Yogesh Patel 02/17/2025
 Supervised By :Ankita Jodhani 02/17/2025



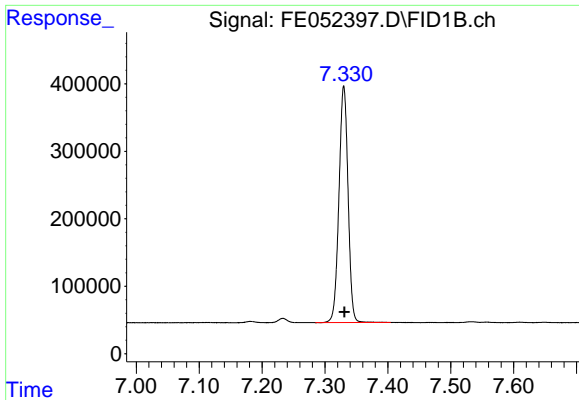
#2 n-Decane (C10)
 R.T.: 4.516 min
 Delta R.T.: 0.000 min
 Response: 3288136
 Conc: 21.05 ug/ml



#3 A~Naphthalene (C11.7)
 R.T.: 6.227 min
 Delta R.T.: -0.002 min
 Response: 3644514
 Conc: 21.09 ug/ml



#4 n-Dodecane (C12)
 R.T.: 6.698 min
 Delta R.T.: 0.000 min
 Response: 3304149
 Conc: 20.93 ug/ml



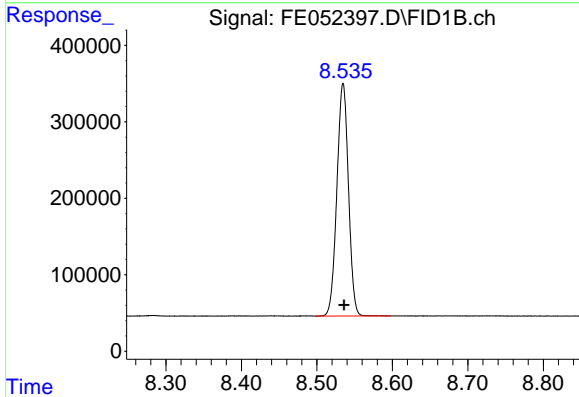
#5 A~2-methylnaphthalene (C12.89)

R.T.: 7.330 min
 Delta R.T.: -0.001 min
 Response: 3520079
 Conc: 20.96 ug/ml

Instrument : FID_E
 ClientSampleId : 20 PPM ALIPHATIC HC STD

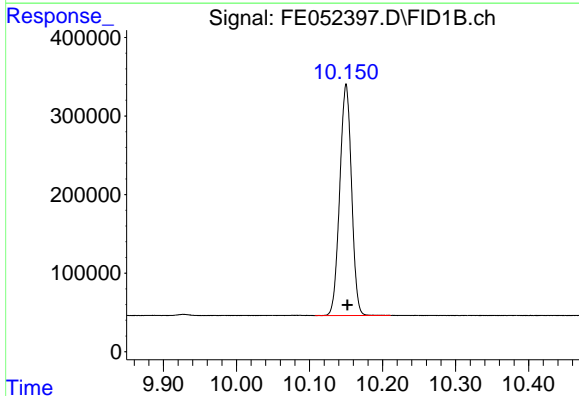
Manual Integrations
 APPROVED

Reviewed By :Yogesh Patel 02/17/2025
 Supervised By :Ankita Jodhani 02/17/2025



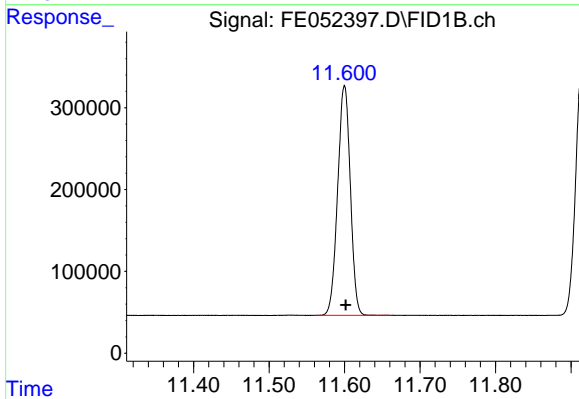
#6 n-Tetradecane (C14)

R.T.: 8.535 min
 Delta R.T.: -0.001 min
 Response: 3240365
 Conc: 20.57 ug/ml



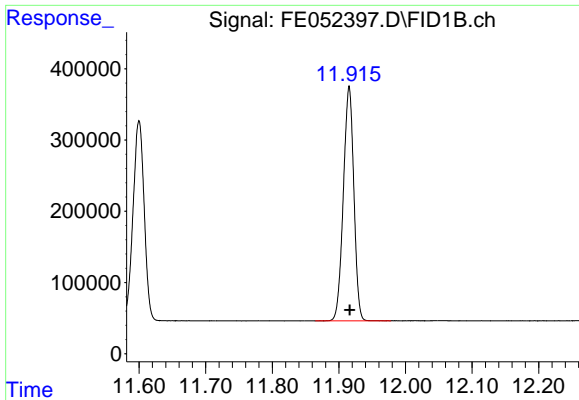
#7 n-Hexadecane (C16)

R.T.: 10.150 min
 Delta R.T.: -0.002 min
 Response: 3296933
 Conc: 20.17 ug/ml



#8 n-Octadecane (C18)

R.T.: 11.600 min
 Delta R.T.: -0.002 min
 Response: 3275363
 Conc: 19.80 ug/ml



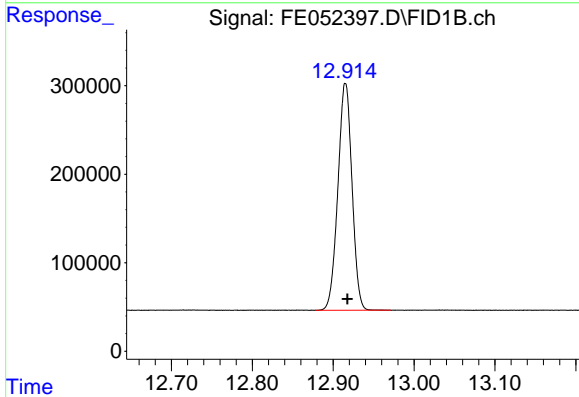
#9 ortho-Terphenyl (SURR)

R.T.: 11.915 min
 Delta R.T.: -0.001 min
 Response: 3599543
 Conc: 19.26 ug/ml

Instrument : FID_E
 ClientSampleId : 20 PPM ALIPHATIC HC STD

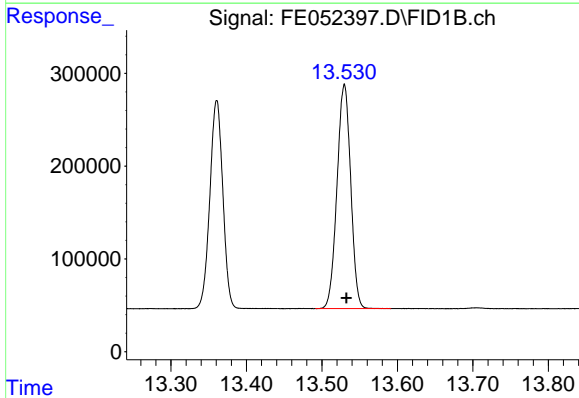
Manual Integrations
 APPROVED

Reviewed By :Yogesh Patel 02/17/2025
 Supervised By :Ankita Jodhani 02/17/2025



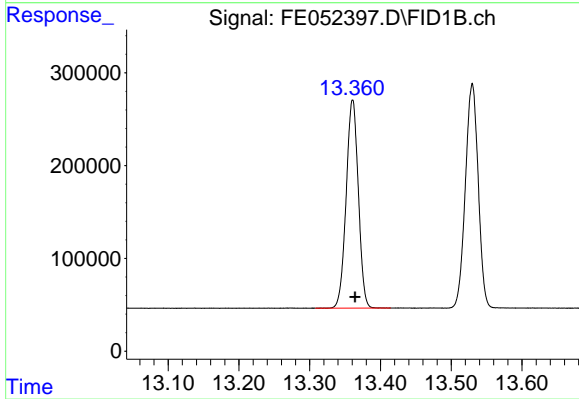
#10 n-Eicosane (C20)

R.T.: 12.915 min
 Delta R.T.: -0.003 min
 Response: 3113544
 Conc: 19.53 ug/ml



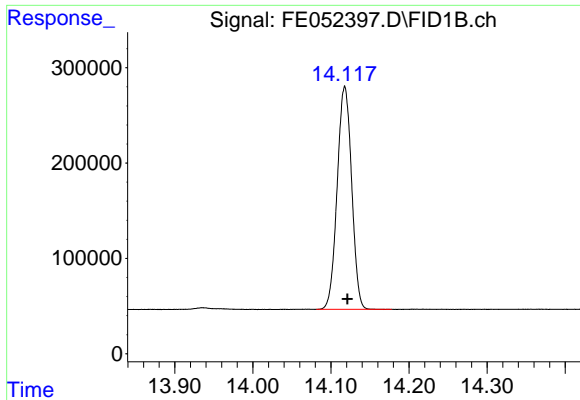
#11 n-Heneicosane (C21)

R.T.: 13.530 min
 Delta R.T.: -0.003 min
 Response: 3047236
 Conc: 19.45 ug/ml



#12 1-chlorooctadecane (SURR)

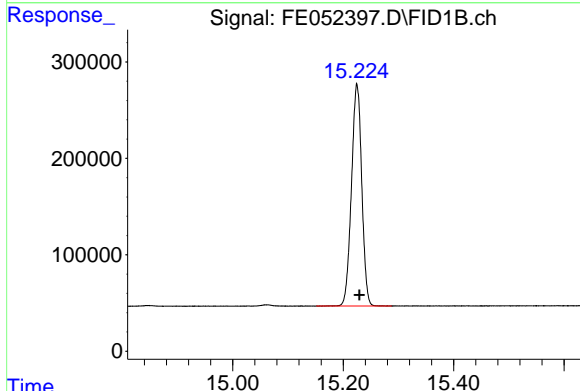
R.T.: 13.361 min
 Delta R.T.: -0.003 min
 Response: 2680543
 Conc: 19.29 ug/ml



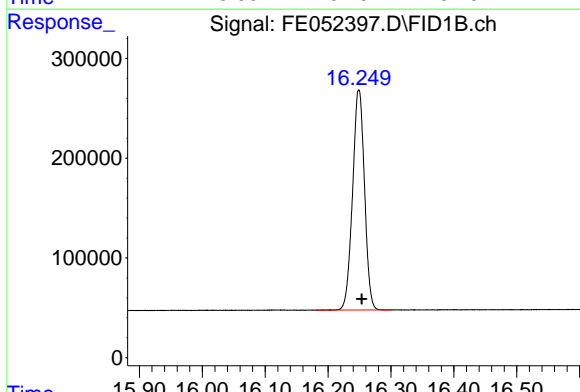
#13 n-Docosane (C22)
 R.T.: 14.118 min
 Delta R.T.: -0.003 min
 Response: 3010625
 Conc: 19.24 ug/ml

Instrument : FID_E
 Client Sample Id : 20 PPM ALIPHATIC HC STD

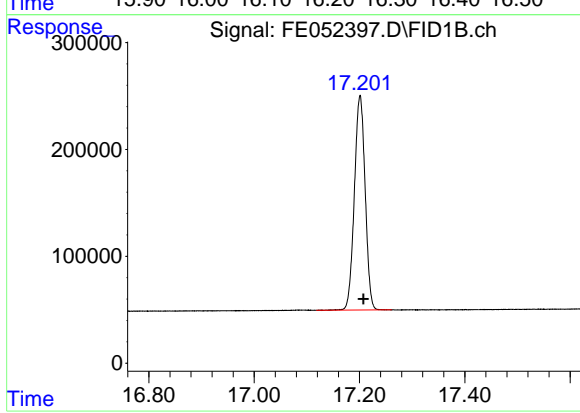
Manual Integrations
APPROVED
 Reviewed By :Yogesh Patel 02/17/2025
 Supervised By :Ankita Jodhani 02/17/2025



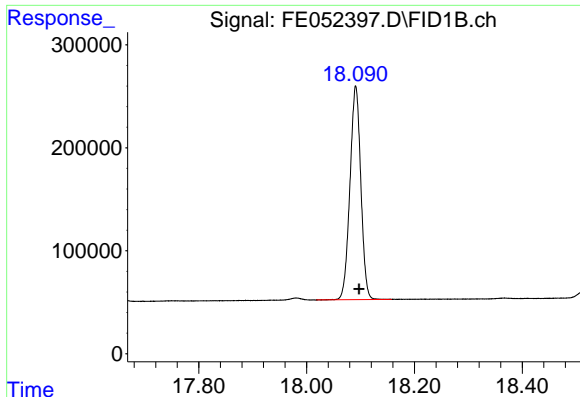
#14 n-Tetracosane (C24)
 R.T.: 15.225 min
 Delta R.T.: -0.004 min
 Response: 2977296
 Conc: 18.93 ug/ml



#15 n-Hexacosane (C26)
 R.T.: 16.249 min
 Delta R.T.: -0.005 min
 Response: 2909617
 Conc: 18.79 ug/ml



#16 n-Octacosane (C28)
 R.T.: 17.201 min
 Delta R.T.: -0.007 min
 Response: 2852206
 Conc: 18.65 ug/ml



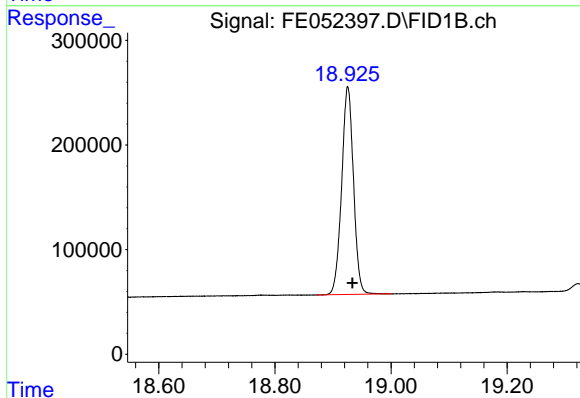
#17 n-Tricontane (C30)

R.T.: 18.091 min
 Delta R.T.: -0.006 min
 Response: 2899479
 Conc: 18.57 ug/ml

Instrument : FID_E
 Client Sample Id : 20 PPM ALIPHATIC HC STD

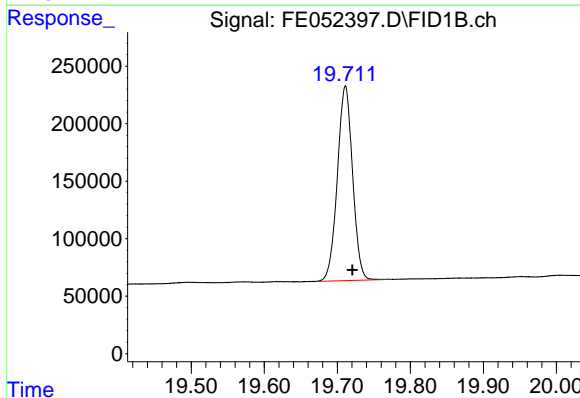
Manual Integrations
 APPROVED

Reviewed By :Yogesh Patel 02/17/2025
 Supervised By :Ankita Jodhani 02/17/2025



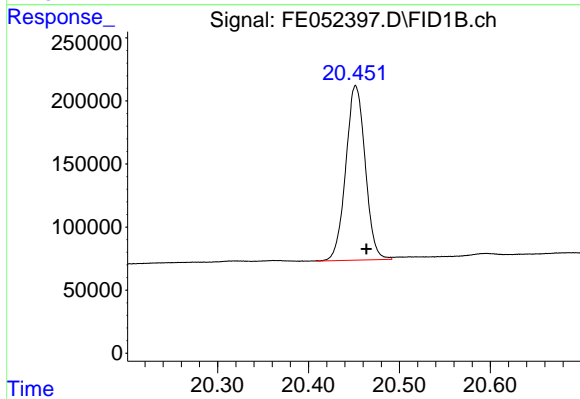
#18 n-Dotriacontane (C32)

R.T.: 18.926 min
 Delta R.T.: -0.008 min
 Response: 2815057
 Conc: 18.40 ug/ml



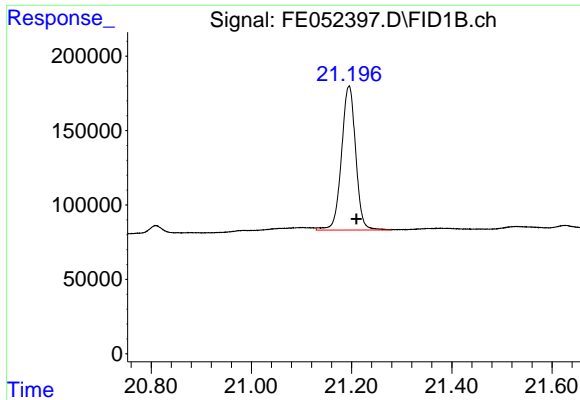
#19 n-Tetratriacontane (C34)

R.T.: 19.711 min
 Delta R.T.: -0.010 min
 Response: 2452952
 Conc: 17.24 ug/ml



#20 n-Hexatriacontane (C36)

R.T.: 20.451 min
 Delta R.T.: -0.012 min
 Response: 2054207
 Conc: 16.48 ug/ml m



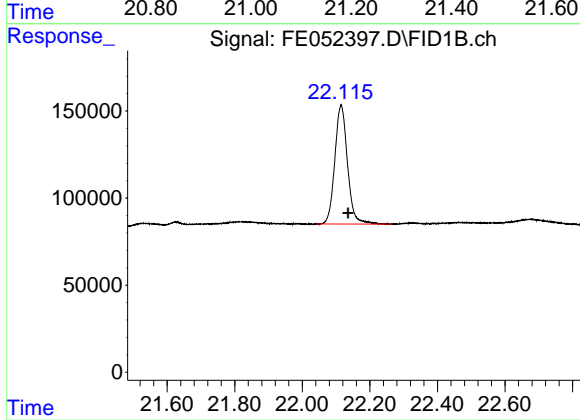
#21 n-Octatriacontane (C38)

R.T.: 21.196 min
 Delta R.T.: -0.014 min
 Response: 1907416
 Conc: 17.45 ug/ml

Instrument : FID_E
 ClientSampleId : 20 PPM ALIPHATIC HC STD

Manual Integrations
 APPROVED

Reviewed By :Yogesh Patel 02/17/2025
 Supervised By :Ankita Jodhani 02/17/2025



#22 n-Tetracontane (C40)

R.T.: 22.115 min
 Delta R.T.: -0.021 min
 Response: 1781302
 Conc: 17.71 ug/ml