

Data Path : Z:\pestpcbsrv\HPCHEM1\FID\_E\Data\FE021622AL\  
 Data File : FE035041.D  
 Signal(s) : FID1B.CH  
 Acq On : 16 Feb 2022 13:01  
 Operator : YP\AJ  
 Sample : 5 PPM ALIPHATIC HC STD5  
 Misc :  
 ALS Vial : 6 Sample Multiplier: 1

Integration File: autoint1.e  
 Quant Time: Feb 16 13:31:23 2022  
 Quant Method : Z:\pestpcbsrv\HPCHEM1\FID\_E\methods\Aliphatic EPH 021622.M  
 Quant Title : GC Extractables  
 QLast Update : Wed Feb 16 13:06:16 2022  
 Response via : Initial Calibration  
 Integrator: ChemStation 6890 Scale Mode: Large solvent peaks clipped

Volume Inj. : 1 ul  
 Signal Phase : Rxi-1ms  
 Signal Info : 20M x 0.18mm x 0.18um

Compound	R.T.	Response	Conc Units
-----			
System Monitoring Compounds			
9) S ortho-Terphenyl (SURR)	11.728	4749222	4.647 ug/ml
Spiked Amount	50.000	Recovery =	9.29%
12) S 1-chlorooctadecane (S...	13.147	3660484	4.590 ug/ml
Spiked Amount	50.000	Recovery =	9.18%
Target Compounds			
1) T n-Nonane (C9)	3.628	3799808	4.402 ug/ml
2) T n-Decane (C10)	4.617	3998273	4.497 ug/ml
3) T A~Naphthalene (C11.7)	6.169	4483327	4.634 ug/ml
4) T n-Dodecane (C12)	6.585	4264657	4.639 ug/ml
5) T A~2-methylnaphthalene...	7.215	4509099	4.602 ug/ml
6) T n-Tetradecane (C14)	8.367	4240601	4.587 ug/ml
7) T n-Hexadecane (C16)	9.961	4307768	4.615 ug/ml
8) T n-Octadecane (C18)	11.398	4383371	4.654 ug/ml
10) T n-Eicosane (C20)	12.702	4364945	4.682 ug/ml
11) T n-Heneicosane (C21)	13.312	4334850	4.649 ug/ml
13) T n-Docosane (C22)	13.896	4427879	4.775 ug/ml
14) T n-Tetracosane (C24)	14.994	4505208	4.957 ug/ml
15) T n-Hexacosane (C26)	16.010	4425818	5.115 ug/ml
16) T n-Octacosane (C28)	16.956	4197873	5.289 ug/ml
17) T n-Tricontane (C30)	17.839	3777253	5.484 ug/ml
18) T n-Dotriacontane (C32)	18.667	2963979	5.468 ug/ml
19) T n-Tetratriacontane (C34)	19.445	1991255	5.230 ug/ml
20) T n-Hexatriacontane (C36)	20.181	1199671	5.035 ug/ml
21) T n-Octatriacontane (C38)	20.930	695699	4.871 ug/ml
22) T n-Tetracontane (C40)	21.863	440900	4.810 ug/ml
-----			

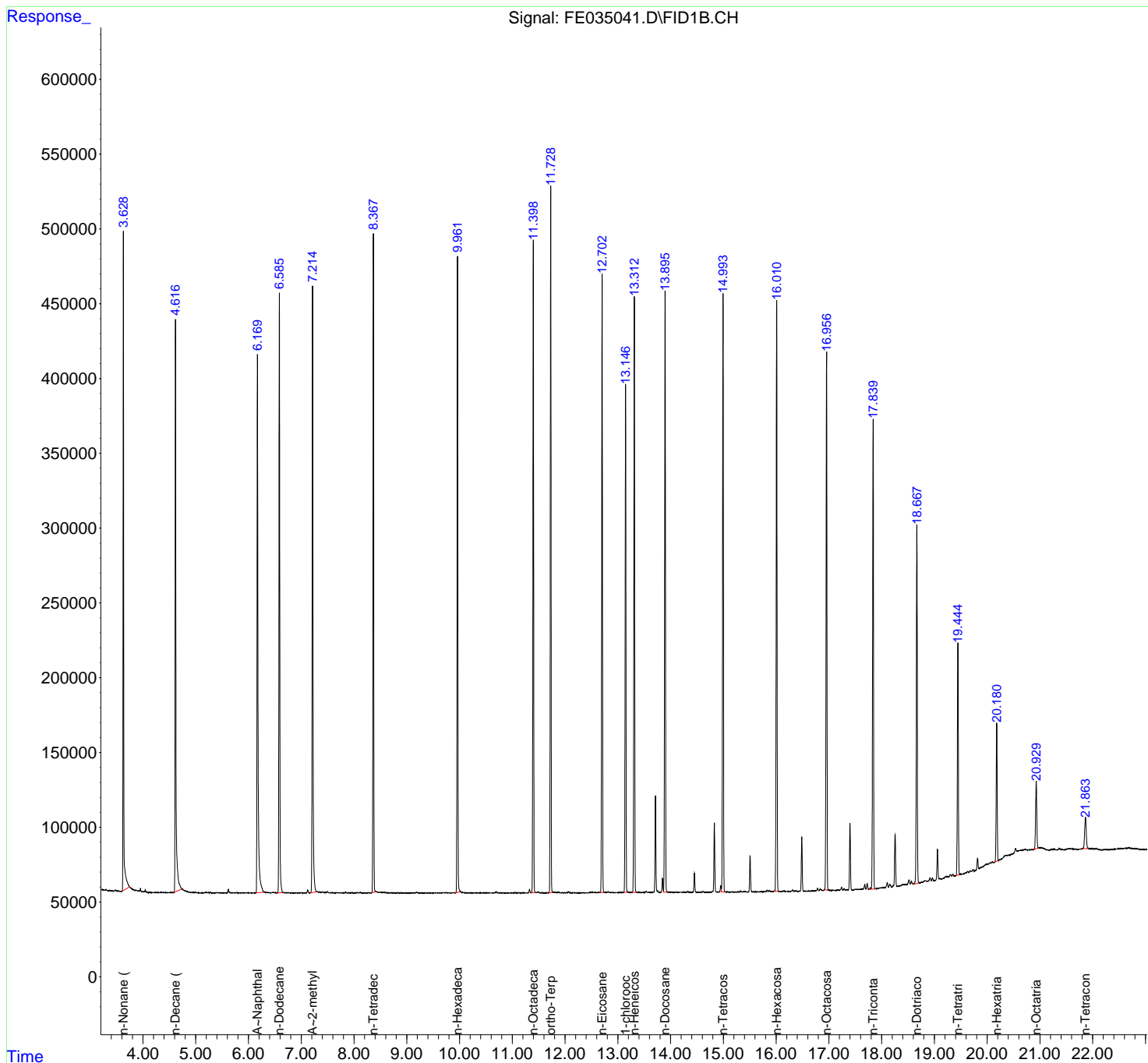
(f)=RT Delta > 1/2 Window

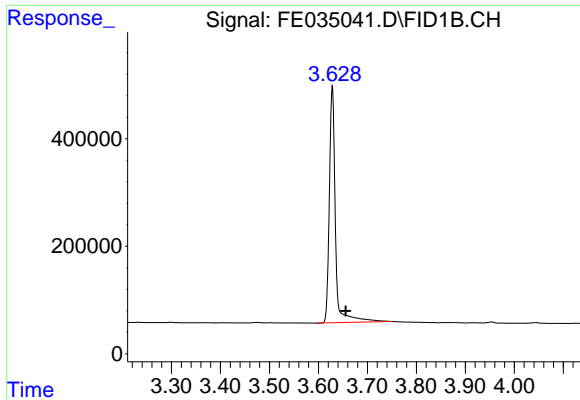
(m)=manual int.

Data Path : Z:\pestpcbsrv\HPCHEM1\FID\_E\Data\FE021622AL\  
 Data File : FE035041.D  
 Signal(s) : FID1B.CH  
 Acq On : 16 Feb 2022 13:01  
 Operator : YP\AJ  
 Sample : 5 PPM ALIPHATIC HC STD5  
 Misc :  
 ALS Vial : 6 Sample Multiplier: 1

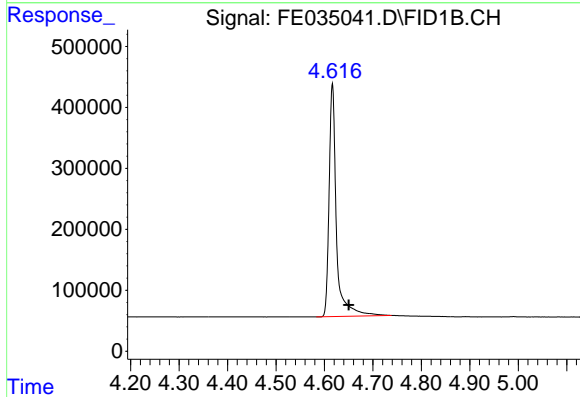
Integration File: autoint1.e  
 Quant Time: Feb 16 13:31:23 2022  
 Quant Method : Z:\pestpcbsrv\HPCHEM1\FID\_E\methods\Aliphatic EPH 021622.M  
 Quant Title : GC Extractables  
 QLast Update : Wed Feb 16 13:06:16 2022  
 Response via : Initial Calibration  
 Integrator: ChemStation 6890 Scale Mode: Large solvent peaks clipped

Volume Inj. : 1 ul  
 Signal Phase : Rxi-1ms  
 Signal Info : 20M x 0.18mm x 0.18um

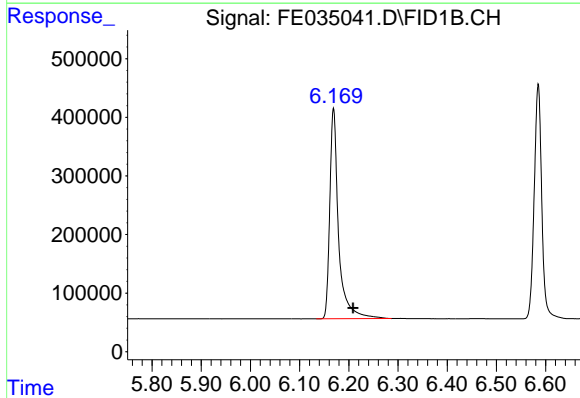




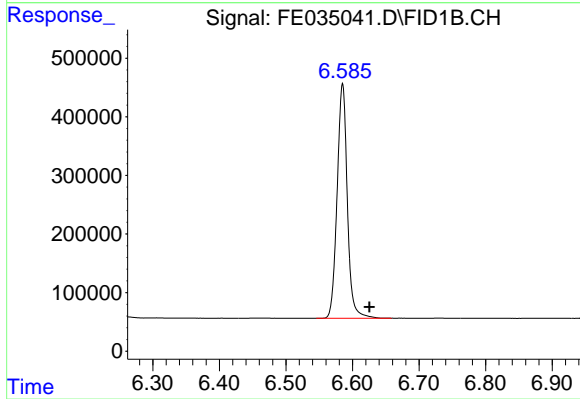
#1 n-Nonane (C9)  
R.T.: 3.628 min  
Delta R.T.: -0.028 min  
Response: 3799808  
Conc: 4.40 ug/ml



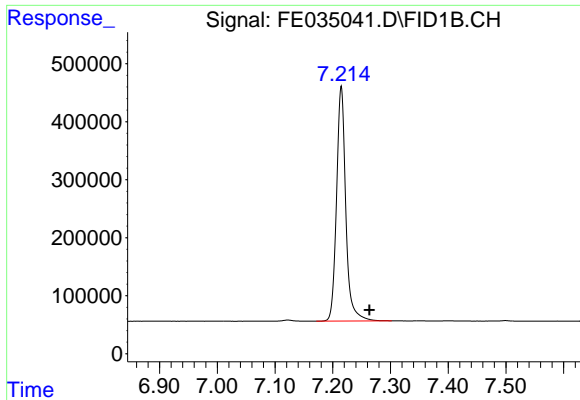
#2 n-Decane (C10)  
R.T.: 4.617 min  
Delta R.T.: -0.033 min  
Response: 3998273  
Conc: 4.50 ug/ml



#3 A~Naphthalene (C11.7)  
R.T.: 6.169 min  
Delta R.T.: -0.040 min  
Response: 4483327  
Conc: 4.63 ug/ml

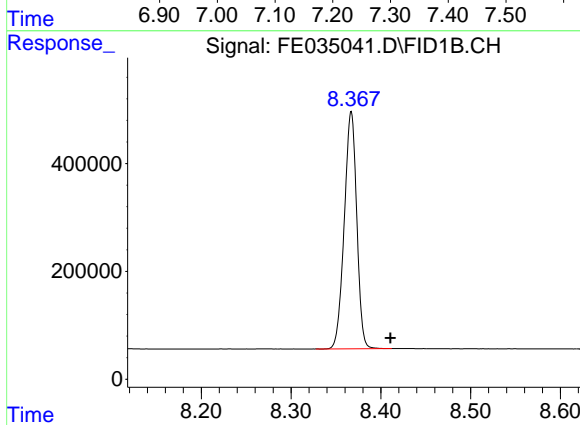


#4 n-Dodecane (C12)  
R.T.: 6.585 min  
Delta R.T.: -0.040 min  
Response: 4264657  
Conc: 4.64 ug/ml



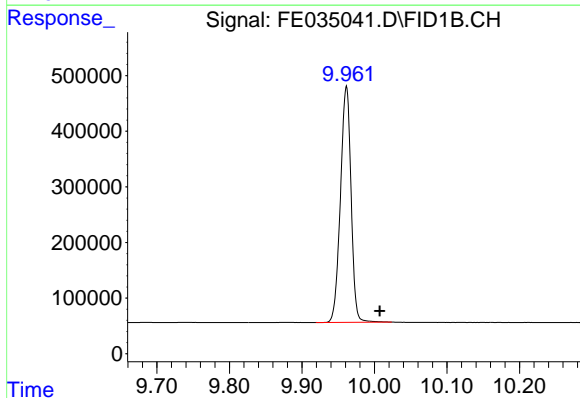
#5 A~2-methylnaphthalene (C12.89)

R.T.: 7.215 min  
Delta R.T.: -0.049 min  
Response: 4509099  
Conc: 4.60 ug/ml



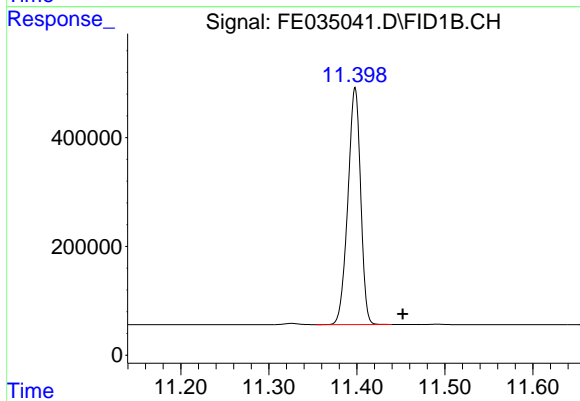
#6 n-Tetradecane (C14)

R.T.: 8.367 min  
Delta R.T.: -0.044 min  
Response: 4240601  
Conc: 4.59 ug/ml



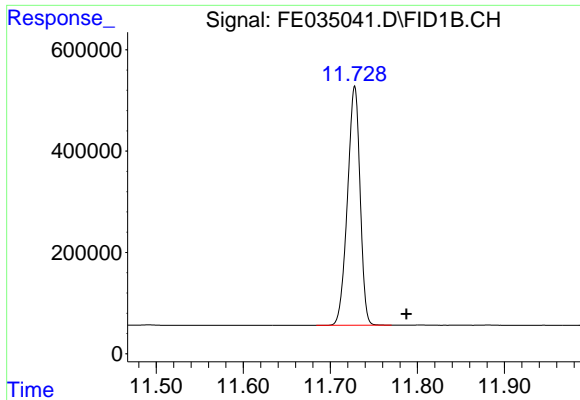
#7 n-Hexadecane (C16)

R.T.: 9.961 min  
Delta R.T.: -0.046 min  
Response: 4307768  
Conc: 4.61 ug/ml



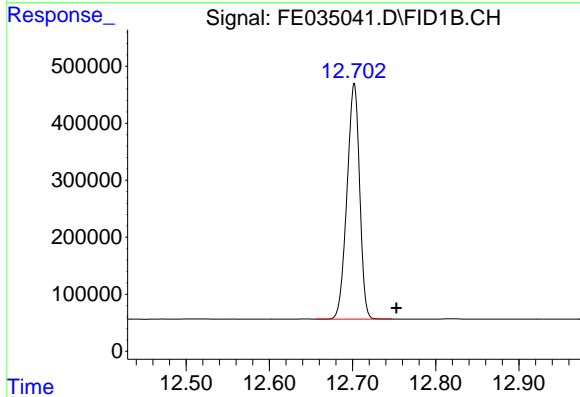
#8 n-Octadecane (C18)

R.T.: 11.398 min  
Delta R.T.: -0.054 min  
Response: 4383371  
Conc: 4.65 ug/ml



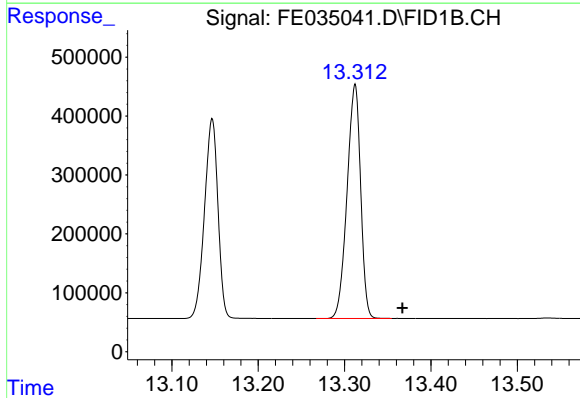
#9 ortho-Terphenyl (SURR)

R.T.: 11.728 min  
 Delta R.T.: -0.059 min  
 Response: 4749222  
 Conc: 4.65 ug/ml



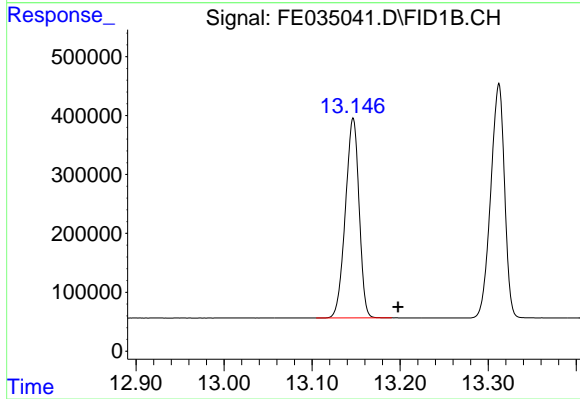
#10 n-Eicosane (C20)

R.T.: 12.702 min  
 Delta R.T.: -0.051 min  
 Response: 4364945  
 Conc: 4.68 ug/ml



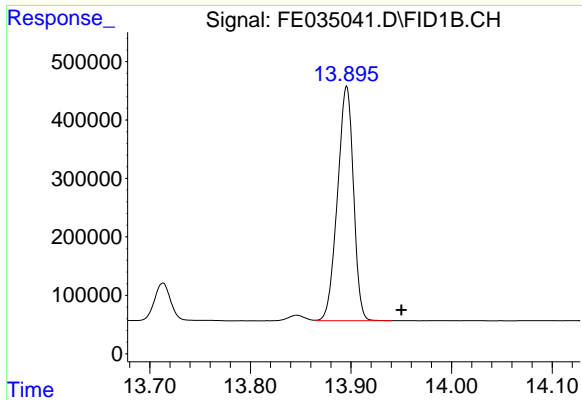
#11 n-Heneicosane (C21)

R.T.: 13.312 min  
 Delta R.T.: -0.055 min  
 Response: 4334850  
 Conc: 4.65 ug/ml



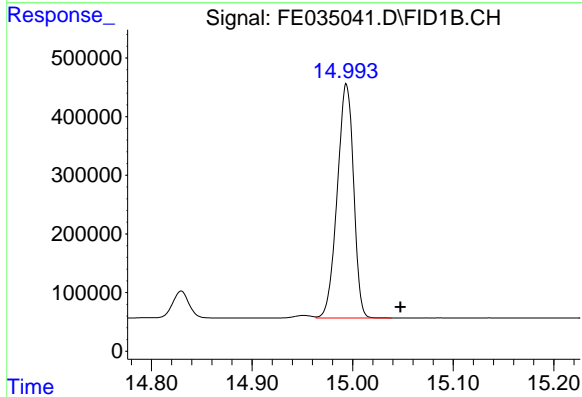
#12 1-chlorooctadecane (SURR)

R.T.: 13.147 min  
 Delta R.T.: -0.051 min  
 Response: 3660484  
 Conc: 4.59 ug/ml



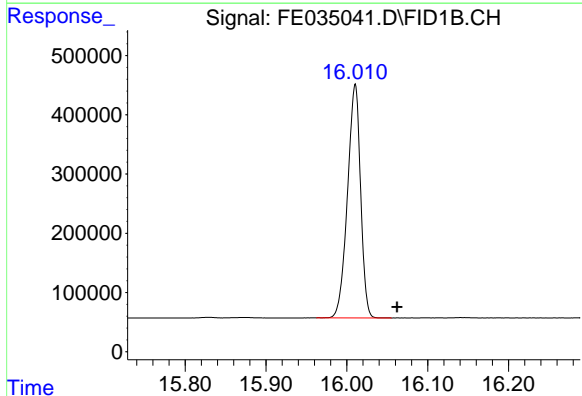
#13 n-Docosane (C22)

R.T.: 13.896 min  
Delta R.T.: -0.054 min  
Response: 4427879  
Conc: 4.78 ug/ml



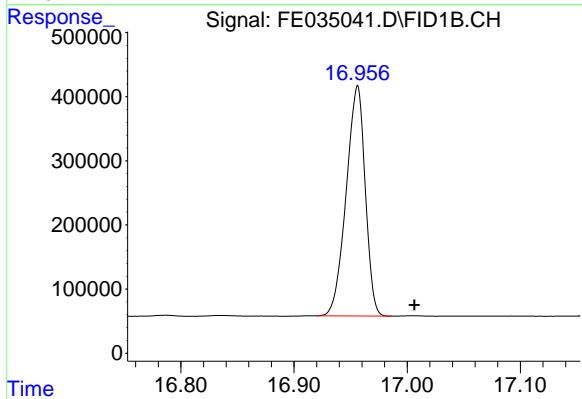
#14 n-Tetracosane (C24)

R.T.: 14.994 min  
Delta R.T.: -0.053 min  
Response: 4505208  
Conc: 4.96 ug/ml



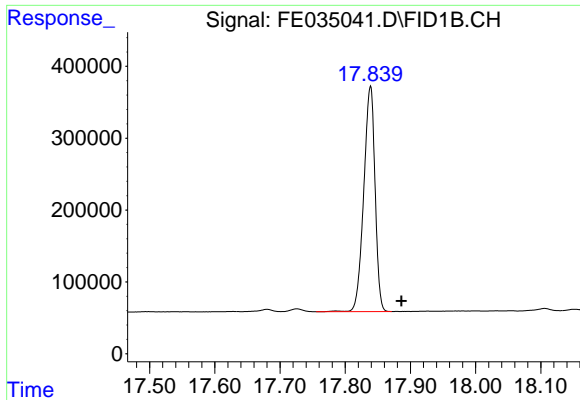
#15 n-Hexacosane (C26)

R.T.: 16.010 min  
Delta R.T.: -0.052 min  
Response: 4425818  
Conc: 5.11 ug/ml

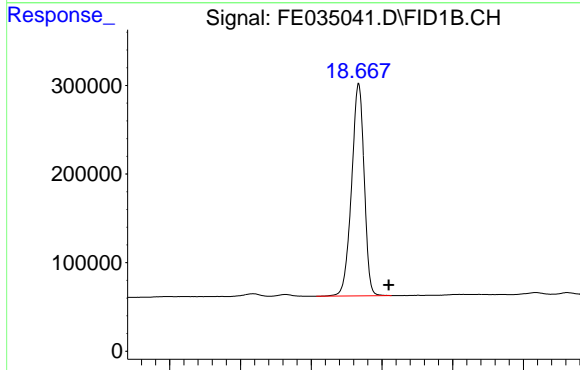


#16 n-Octacosane (C28)

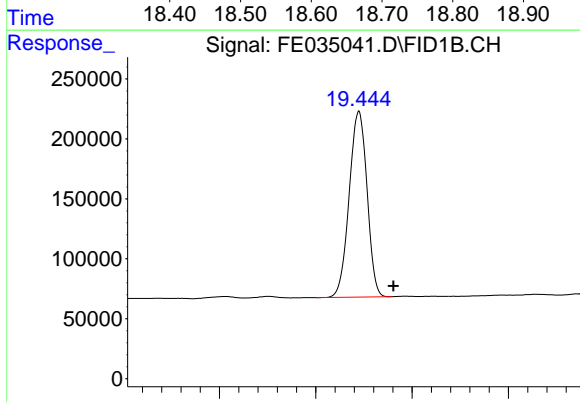
R.T.: 16.956 min  
Delta R.T.: -0.050 min  
Response: 4197873  
Conc: 5.29 ug/ml



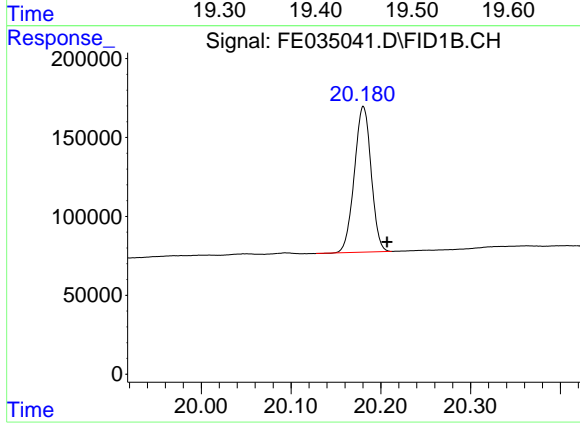
#17 n-Tricontane (C30)  
R.T.: 17.839 min  
Delta R.T.: -0.048 min  
Response: 3777253  
Conc: 5.48 ug/ml



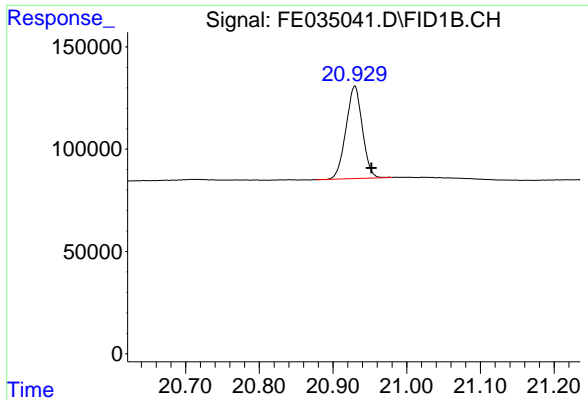
#18 n-Dotriacontane (C32)  
R.T.: 18.667 min  
Delta R.T.: -0.042 min  
Response: 2963979  
Conc: 5.47 ug/ml



#19 n-Tetratriacontane (C34)  
R.T.: 19.445 min  
Delta R.T.: -0.036 min  
Response: 1991255  
Conc: 5.23 ug/ml

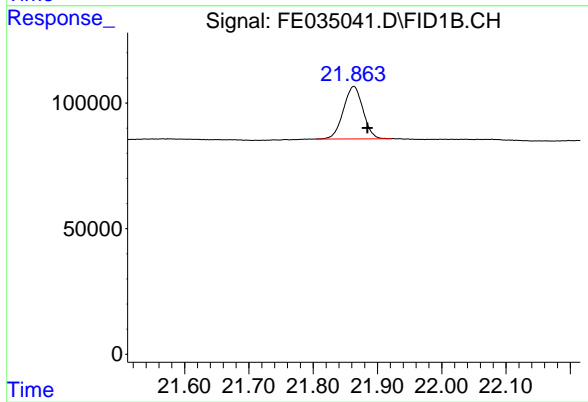


#20 n-Hexatriacontane (C36)  
R.T.: 20.181 min  
Delta R.T.: -0.026 min  
Response: 1199671  
Conc: 5.04 ug/ml



#21 n-Octatriacontane (C38)

R.T.: 20.930 min  
Delta R.T.: -0.022 min  
Response: 695699  
Conc: 4.87 ug/ml



#22 n-Tetracontane (C40)

R.T.: 21.863 min  
Delta R.T.: -0.021 min  
Response: 440900  
Conc: 4.81 ug/ml