

Data Path : Z:\pestpcbsrv\HPCHEM1\FID_E\Data\FE021925AL\
Data File : FE052411.D
Signal(s) : FID1B.ch
Acq On : 19 Feb 2025 18:34
Operator : YP\AJ
Sample : I.BLK
Misc :
ALS Vial : 1 Sample Multiplier: 1

Instrument :
FID_E
ClientSampleId :

Integration File: autoint1.e
Quant Time: Feb 20 00:21:13 2025
Quant Method : Z:\pestpcbsrv\HPCHEM1\FID_E\methods\Aliphatic EPH 021325.M
Quant Title : GC Extractables
QLast Update : Fri Feb 14 00:50:00 2025
Response via : Initial Calibration
Integrator: ChemStation

Volume Inj. : 1 ul
Signal Phase : Rxi-1ms
Signal Info : 20M x 0.18mm x 0.18um

Compound	R.T.	Response	Conc Units

System Monitoring Compounds			
Target Compounds			
20) T n-Hexatriacontane (C36)	20.461	368273	2.955 ug/ml

(f)=RT Delta > 1/2 Window

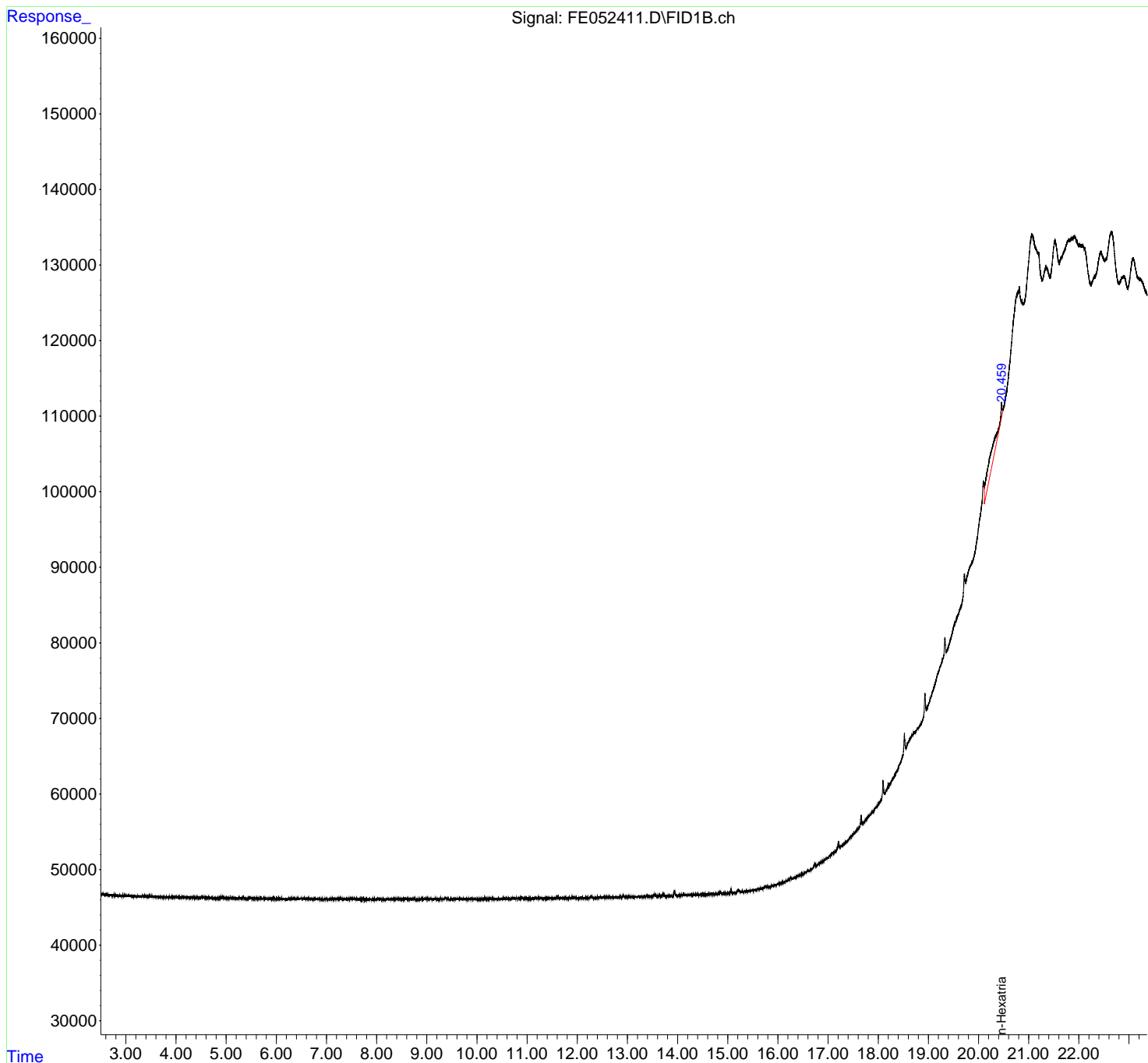
(m)=manual int.

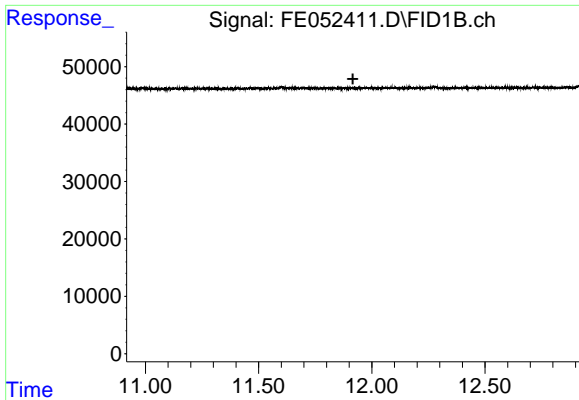
Data Path : Z:\pestpcbsrv\HPCHEM1\FID_E\Data\FE021925AL\
Data File : FE052411.D
Signal(s) : FID1B.ch
Acq On : 19 Feb 2025 18:34
Operator : YP\AJ
Sample : I.BLK
Misc :
ALS Vial : 1 Sample Multiplier: 1

Instrument :
FID_E
ClientSampleId :

Integration File: autoint1.e
Quant Time: Feb 20 00:21:13 2025
Quant Method : Z:\pestpcbsrv\HPCHEM1\FID_E\methods\Aliphatic EPH 021325.M
Quant Title : GC Extractables
QLast Update : Fri Feb 14 00:50:00 2025
Response via : Initial Calibration
Integrator: ChemStation

Volume Inj. : 1 ul
Signal Phase : Rxi-1ms
Signal Info : 20M x 0.18mm x 0.18um

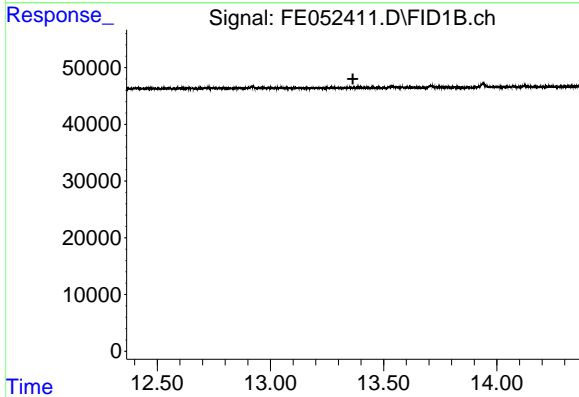




#9 ortho-Terphenyl (SURR)

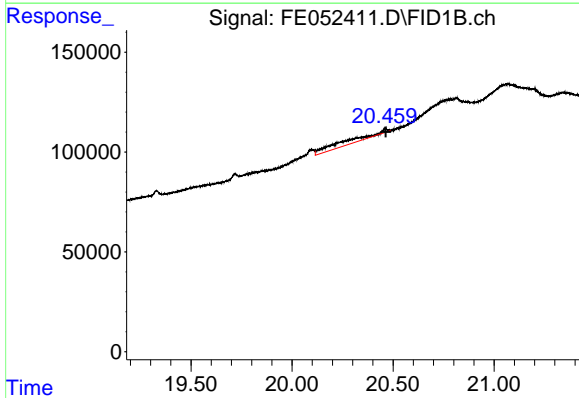
R.T.: 0.000 min
 Exp R.T.: 11.917 min
 Response: 0
 Conc: N.D.

Instrument : FID_E
 ClientSampleId :



#12 1-chlorooctadecane (SURR)

R.T.: 0.000 min
 Exp R.T.: 13.364 min
 Response: 0
 Conc: N.D.



#20 n-Hexatriacontane (C36)

R.T.: 20.461 min
 Delta R.T.: -0.002 min
 Response: 368273
 Conc: 2.95 ug/ml