

Data Path : Z:\pestpcbsrv\HPCHEM1\FID_E\Data\FE022023AL\
 Data File : FE040458.D
 Signal(s) : FID1B.ch
 Acq On : 21 Feb 2023 02:44
 Operator : YP\AJ
 Sample : 01597-01
 Misc :
 ALS Vial : 22 Sample Multiplier: 1

Instrument :
 FID_E
ClientSampleId :
 NYE-WATER-0217

Integration File: autoint1.e
 Quant Time: Feb 21 05:14:13 2023
 Quant Method : Z:\pestpcbsrv\HPCHEM1\FID_E\methods\Aliphatic EPH 020223.M
 Quant Title : GC Extractables
 QLast Update : Thu Feb 02 04:52:48 2023
 Response via : Initial Calibration
 Integrator: ChemStation

Volume Inj. : 1 ul
 Signal Phase : Rxi-1ms
 Signal Info : 20M x 0.18mm x 0.18um

Compound	R.T.	Response	Conc Units

System Monitoring Compounds			
12) S 1-chlorooctadecane (S...	13.328	5379759	43.377 ug/ml
Spiked Amount	50.000	Recovery =	86.75%

Target Compounds

(f)=RT Delta > 1/2 Window

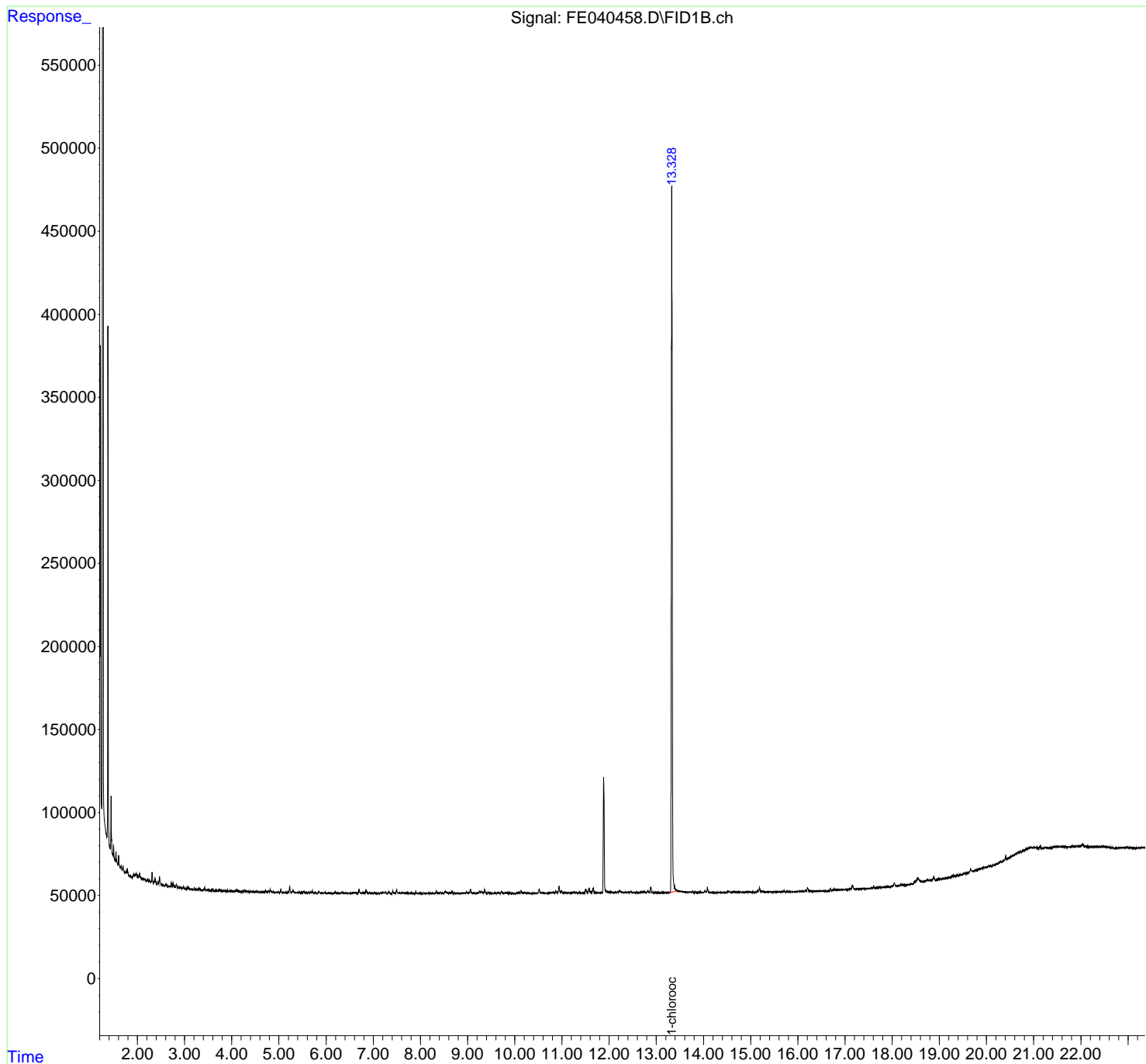
(m)=manual int.

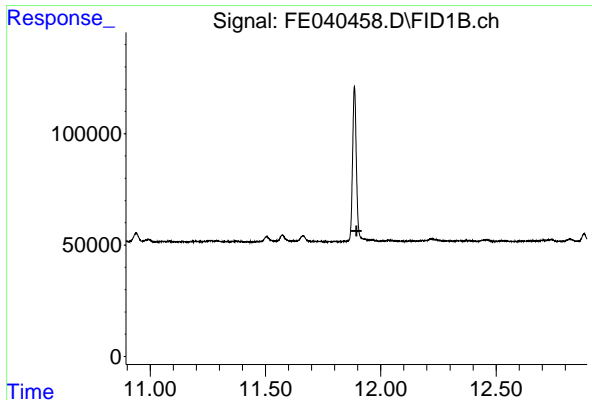
Data Path : Z:\pestpcbsrv\HPCHEM1\FID_E\Data\FE022023AL\
 Data File : FE040458.D
 Signal(s) : FID1B.ch
 Acq On : 21 Feb 2023 02:44
 Operator : YP\AJ
 Sample : 01597-01
 Misc :
 ALS Vial : 22 Sample Multiplier: 1

Instrument :
 FID_E
 ClientSampleId :
 NYE-WATER-0217

Integration File: autoint1.e
 Quant Time: Feb 21 05:14:13 2023
 Quant Method : Z:\pestpcbsrv\HPCHEM1\FID_E\methods\Aliphatic EPH 020223.M
 Quant Title : GC Extractables
 QLast Update : Thu Feb 02 04:52:48 2023
 Response via : Initial Calibration
 Integrator: ChemStation

Volume Inj. : 1 ul
 Signal Phase : Rxi-1ms
 Signal Info : 20M x 0.18mm x 0.18um

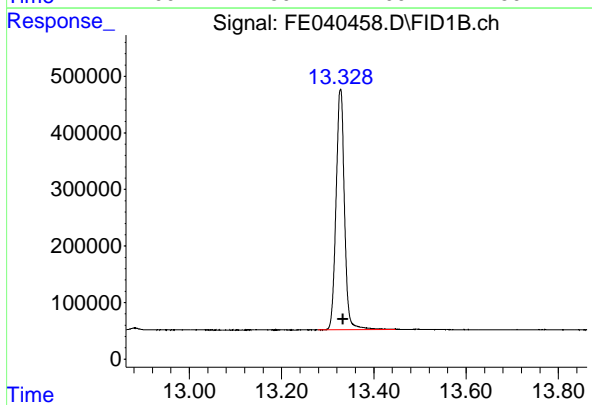




#9 ortho-Terphenyl (SURR)

R.T.: 0.000 min
Exp R.T.: 11.895 min
Response: 0
Conc: N.D.

Instrument :
FID_E
ClientSampleId :
NYE-WATER-0217



#12 1-chlorooctadecane (SURR)

R.T.: 13.328 min
Delta R.T.: -0.006 min
Response: 5379759
Conc: 43.38 ug/ml