

Data Path : Z:\pestpcbsrv\HPCHEM1\FID_E\Data\FE022122AL\
 Data File : FE035101.D
 Signal(s) : FID1B.CH
 Acq On : 21 Feb 2022 12:17
 Operator : YP\AJ
 Sample : 20 PPM ALIPHATIC HC STD
 Misc :
 ALS Vial : 2 Sample Multiplier: 1

Integration File: autoint1.e
 Quant Time: Feb 21 13:13:45 2022
 Quant Method : Z:\pestpcbsrv\HPCHEM1\FID_E\methods\Aliphatic EPH 021822.M
 Quant Title : GC Extractables
 QLast Update : Fri Feb 18 14:37:45 2022
 Response via : Initial Calibration
 Integrator: ChemStation 6890 Scale Mode: Large solvent peaks clipped

Volume Inj. : 1 ul
 Signal Phase : Rxi-1ms
 Signal Info : 20M x 0.18mm x 0.18um

Compound	R.T.	Response	Conc Units

System Monitoring Compounds			
9) S ortho-Terphenyl (SURR)	11.735	18815005	19.365 ug/ml
Spiked Amount	50.000	Recovery	= 38.73%
12) S 1-chlorooctadecane (S...	13.151	14563099	19.798 ug/ml
Spiked Amount	50.000	Recovery	= 39.60%
Target Compounds			
1) T n-Nonane (C9)	3.615	15472384	18.882 ug/ml
2) T n-Decane (C10)	4.614	16109089	19.232 ug/ml
3) T A~Naphthalene (C11.7)	6.169	17764758	18.957 ug/ml
4) T n-Dodecane (C12)	6.587	16623107	19.256 ug/ml
5) T A~2-methylnaphthalene...	7.218	17985174	19.025 ug/ml
6) T n-Tetradecane (C14)	8.370	16669370	19.339 ug/ml
7) T n-Hexadecane (C16)	9.965	16857842	19.368 ug/ml
8) T n-Octadecane (C18)	11.405	17066763	19.343 ug/ml
10) T n-Eicosane (C20)	12.707	16954827	19.420 ug/ml
11) T n-Heneicosane (C21)	13.317	16990210	19.418 ug/ml
13) T n-Docosane (C22)	13.900	16911765	19.386 ug/ml
14) T n-Tetracosane (C24)	14.998	16644928	19.240 ug/ml
15) T n-Hexacosane (C26)	16.014	15996296	18.973 ug/ml
16) T n-Octacosane (C28)	16.959	15022031	18.627 ug/ml
17) T n-Tricontane (C30)	17.840	13542309	18.120 ug/ml
18) T n-Dotriacontane (C32)	18.667	11279770	17.109 ug/ml
19) T n-Tetratriacontane (C34)	19.444	8558507	15.649 ug/ml
20) T n-Hexatriacontane (C36)	20.178	5876353	14.371 ug/ml
21) T n-Octatriacontane (C38)	20.924	3826930	14.004 ug/ml
22) T n-Tetracontane (C40)	21.852	2529484	14.669 ug/ml

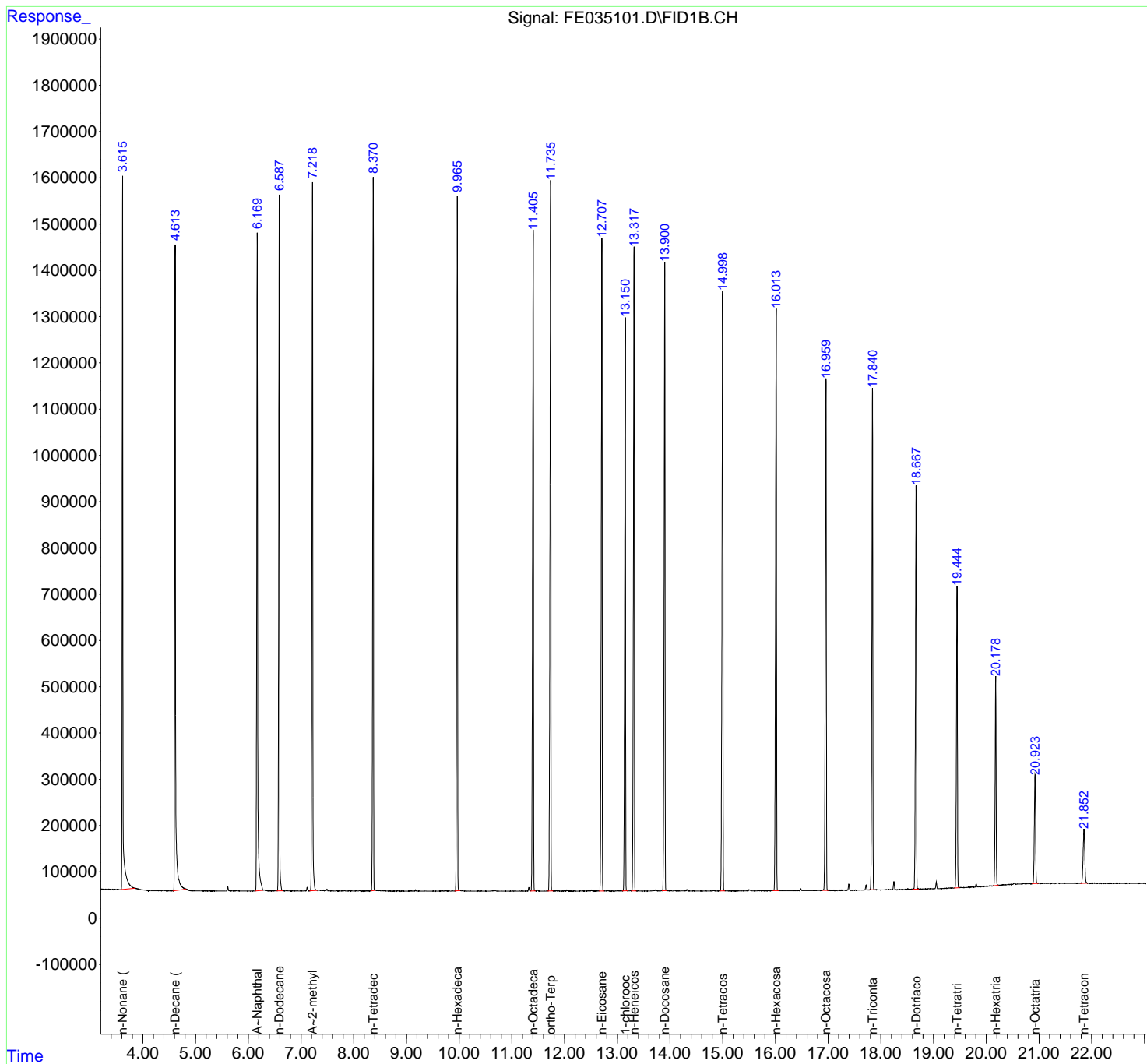
(f)=RT Delta > 1/2 Window

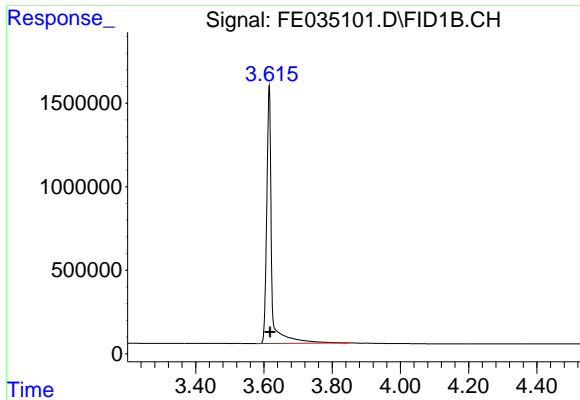
(m)=manual int.

Data Path : Z:\pestpcbsrv\HPCHEM1\FID_E\Data\FE022122AL\
 Data File : FE035101.D
 Signal(s) : FID1B.CH
 Acq On : 21 Feb 2022 12:17
 Operator : YP\AJ
 Sample : 20 PPM ALIPHATIC HC STD
 Misc :
 ALS Vial : 2 Sample Multiplier: 1

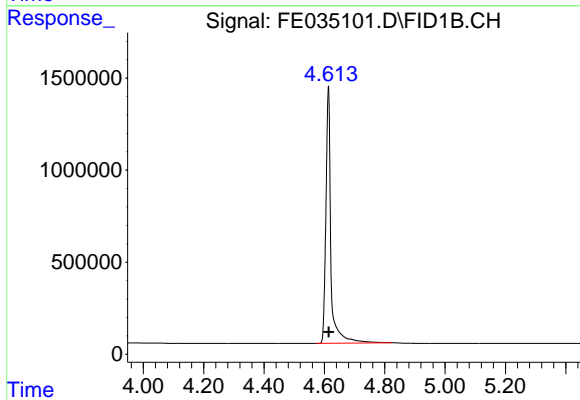
Integration File: autoint1.e
 Quant Time: Feb 21 13:13:45 2022
 Quant Method : Z:\pestpcbsrv\HPCHEM1\FID_E\methods\Aliphatic EPH 021822.M
 Quant Title : GC Extractables
 QLast Update : Fri Feb 18 14:37:45 2022
 Response via : Initial Calibration
 Integrator: ChemStation 6890 Scale Mode: Large solvent peaks clipped

Volume Inj. : 1 ul
 Signal Phase : Rxi-1ms
 Signal Info : 20M x 0.18mm x 0.18um

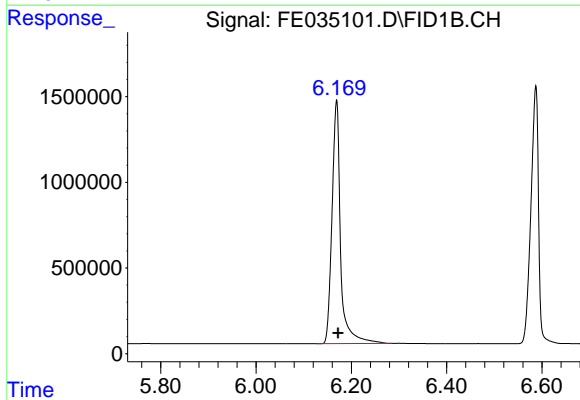




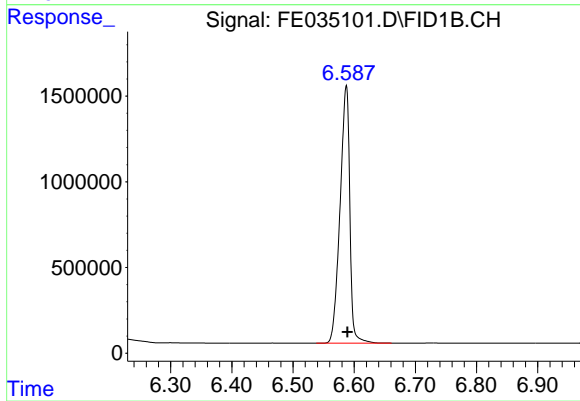
#1 n-Nonane (C9)
R.T.: 3.615 min
Delta R.T.: -0.003 min
Response: 15472384
Conc: 18.88 ug/ml



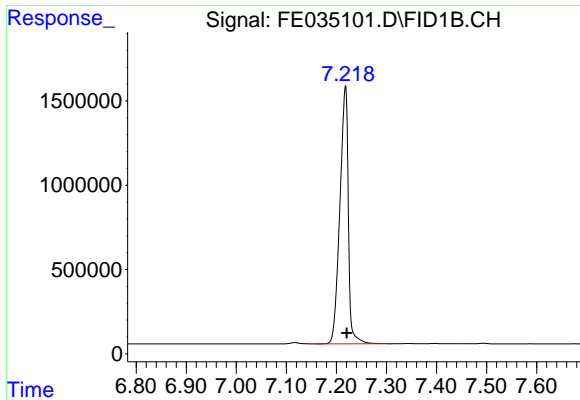
#2 n-Decane (C10)
R.T.: 4.614 min
Delta R.T.: 0.000 min
Response: 16109089
Conc: 19.23 ug/ml



#3 A~Naphthalene (C11.7)
R.T.: 6.169 min
Delta R.T.: -0.003 min
Response: 17764758
Conc: 18.96 ug/ml

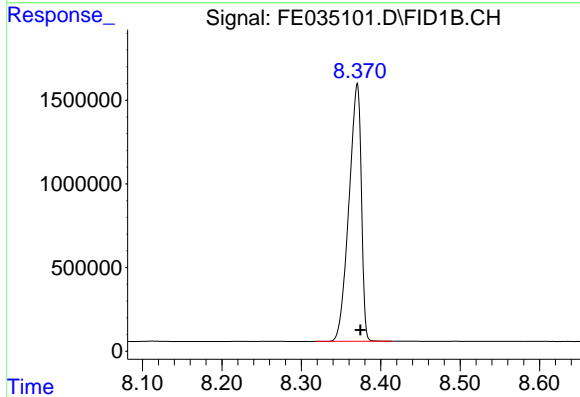


#4 n-Dodecane (C12)
R.T.: 6.587 min
Delta R.T.: -0.002 min
Response: 16623107
Conc: 19.26 ug/ml



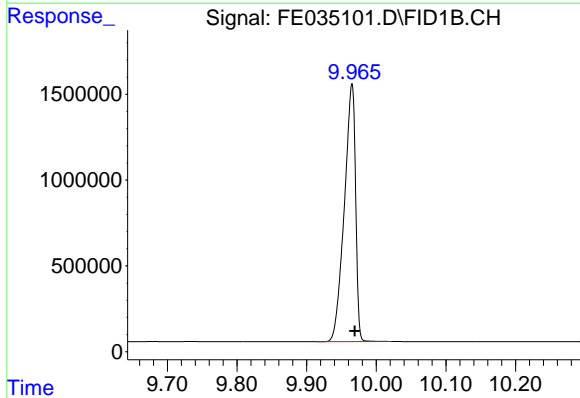
#5 A~2-methylnaphthalene (C12.89)

R.T.: 7.218 min
Delta R.T.: -0.003 min
Response: 17985174
Conc: 19.02 ug/ml



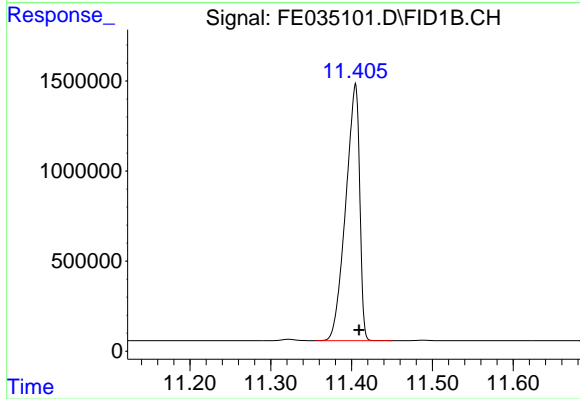
#6 n-Tetradecane (C14)

R.T.: 8.370 min
Delta R.T.: -0.004 min
Response: 16669370
Conc: 19.34 ug/ml



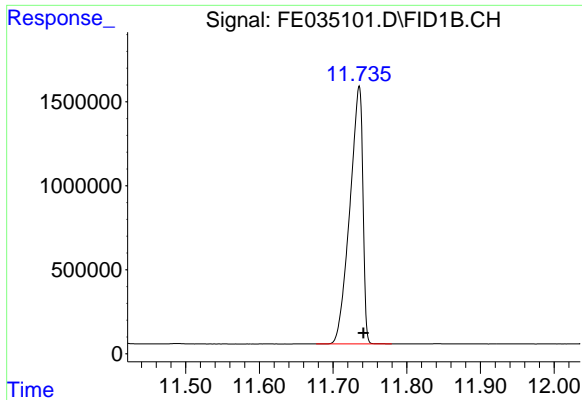
#7 n-Hexadecane (C16)

R.T.: 9.965 min
Delta R.T.: -0.004 min
Response: 16857842
Conc: 19.37 ug/ml



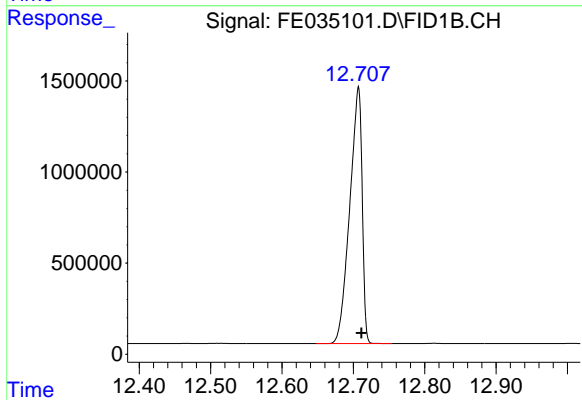
#8 n-Octadecane (C18)

R.T.: 11.405 min
Delta R.T.: -0.005 min
Response: 17066763
Conc: 19.34 ug/ml



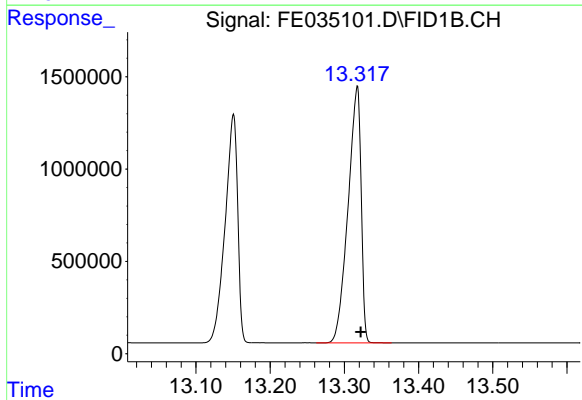
#9 ortho-Terphenyl (SURR)

R.T.: 11.735 min
Delta R.T.: -0.006 min
Response: 18815005
Conc: 19.37 ug/ml



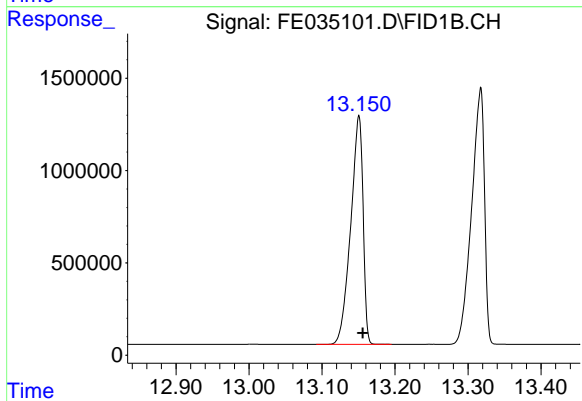
#10 n-Eicosane (C20)

R.T.: 12.707 min
Delta R.T.: -0.004 min
Response: 16954827
Conc: 19.42 ug/ml



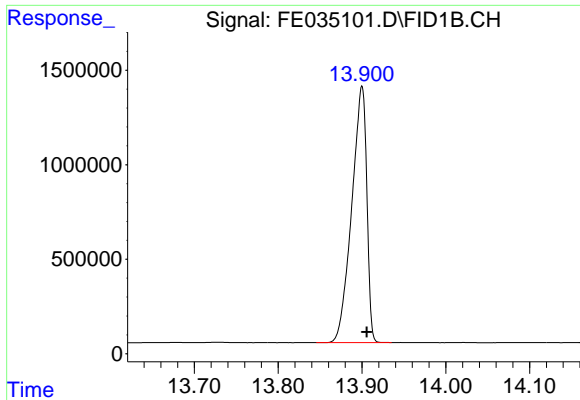
#11 n-Heneicosane (C21)

R.T.: 13.317 min
Delta R.T.: -0.005 min
Response: 16990210
Conc: 19.42 ug/ml



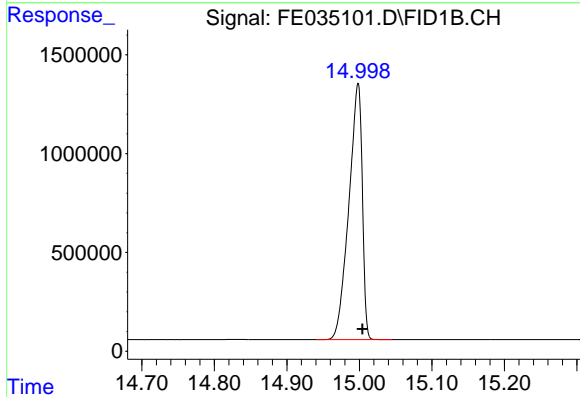
#12 1-chlorooctadecane (SURR)

R.T.: 13.151 min
Delta R.T.: -0.005 min
Response: 14563099
Conc: 19.80 ug/ml



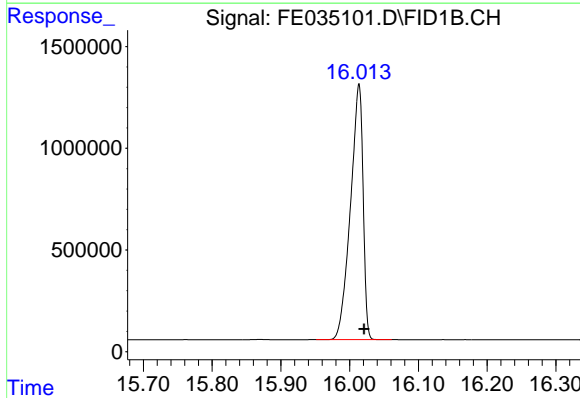
#13 n-Docosane (C22)

R.T.: 13.900 min
Delta R.T.: -0.006 min
Response: 16911765
Conc: 19.39 ug/ml



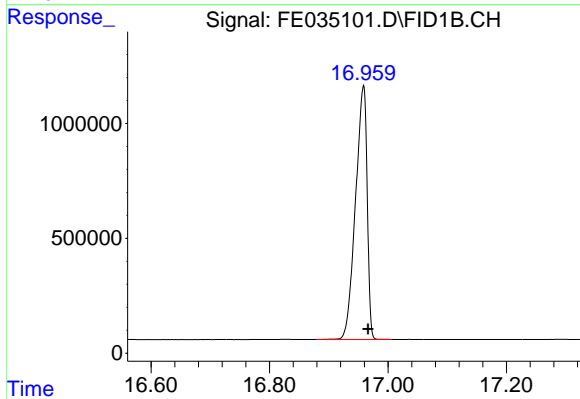
#14 n-Tetracosane (C24)

R.T.: 14.998 min
Delta R.T.: -0.006 min
Response: 16644928
Conc: 19.24 ug/ml



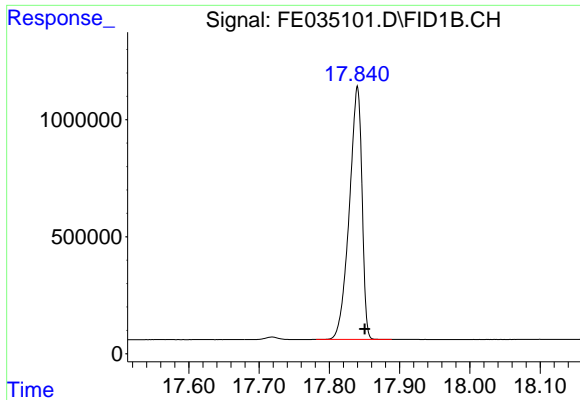
#15 n-Hexacosane (C26)

R.T.: 16.014 min
Delta R.T.: -0.007 min
Response: 15996296
Conc: 18.97 ug/ml



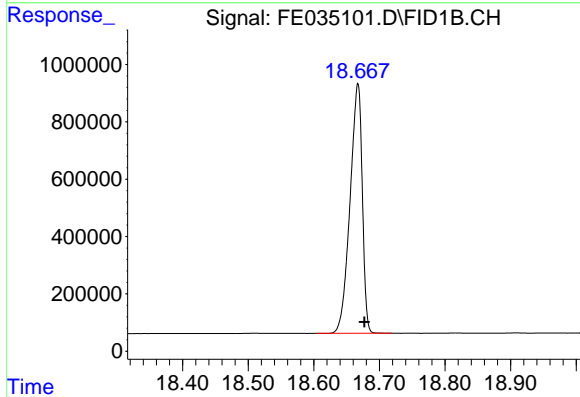
#16 n-Octacosane (C28)

R.T.: 16.959 min
Delta R.T.: -0.008 min
Response: 15022031
Conc: 18.63 ug/ml



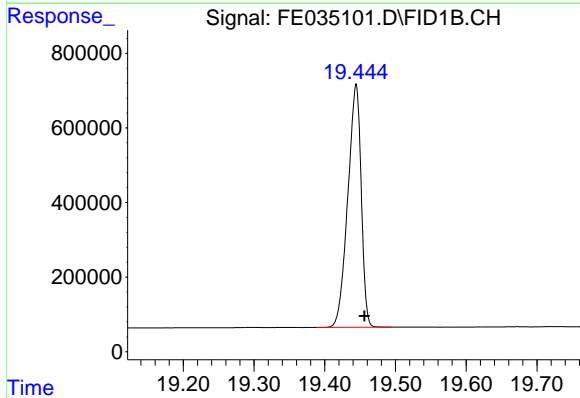
#17 n-Tricontane (C30)

R.T.: 17.840 min
Delta R.T.: -0.010 min
Response: 13542309
Conc: 18.12 ug/ml



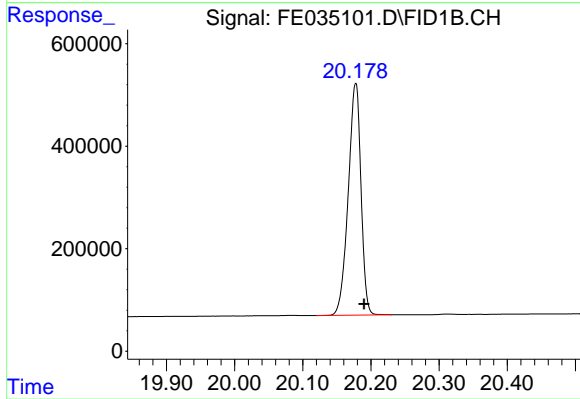
#18 n-Dotriacontane (C32)

R.T.: 18.667 min
Delta R.T.: -0.010 min
Response: 11279770
Conc: 17.11 ug/ml



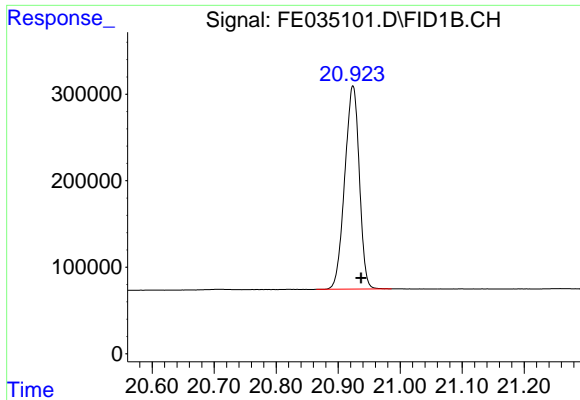
#19 n-Tetratriacontane (C34)

R.T.: 19.444 min
Delta R.T.: -0.012 min
Response: 8558507
Conc: 15.65 ug/ml



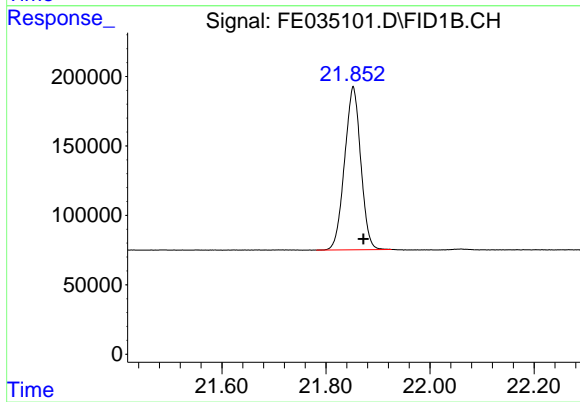
#20 n-Hexatriacontane (C36)

R.T.: 20.178 min
Delta R.T.: -0.012 min
Response: 5876353
Conc: 14.37 ug/ml



#21 n-Octatriacontane (C38)

R.T.: 20.924 min
Delta R.T.: -0.013 min
Response: 3826930
Conc: 14.00 ug/ml



#22 n-Tetracontane (C40)

R.T.: 21.852 min
Delta R.T.: -0.019 min
Response: 2529484
Conc: 14.67 ug/ml