

Data Path : Z:\pestpcbsrv\HPCHEM1\FID_E\Data\FE022222AL\
 Data File : FE035112.D
 Signal(s) : FID1B.CH
 Acq On : 21 Feb 2022 18:17
 Operator : YP\AJ
 Sample : 10 PPM ALIPHATIC HC STD4
 Misc :
 ALS Vial : 5 Sample Multiplier: 1

Instrument :
 FID_E
 ClientSampleId :
 10 PPM ALIPHATIC HC STD4

Integration File: sample.E
 Quant Time: Feb 22 01:20:24 2022
 Quant Method : Z:\pestpcbsrv\HPCHEM1\FID_E\methods\Aliphatic EPH 022222.M
 Quant Title : GC Extractables
 QLast Update : Tue Feb 22 01:19:17 2022
 Response via : Initial Calibration
 Integrator: ChemStation 6890 Scale Mode: Large solvent peaks clipped

Volume Inj. : 1 ul
 Signal Phase : Rxi-1ms
 Signal Info : 20M x 0.18mm x 0.18um

Compound	R.T.	Response	Conc Units

System Monitoring Compounds			
9) S ortho-Terphenyl (SURR)	11.725	10245677	10.330 ug/ml
Spiked Amount	50.000	Recovery	= 20.66%
12) S 1-chlorooctadecane (S...	13.143	7961225	10.297 ug/ml
Spiked Amount	50.000	Recovery	= 20.59%
Target Compounds			
1) T n-Nonane (C9)	3.610	8359951	10.192 ug/ml
2) T n-Decane (C10)	4.608	8656560	10.273 ug/ml
3) T A~Naphthalene (C11.7)	6.163	9676881	10.311 ug/ml
4) T n-Dodecane (C12)	6.581	9047559	10.368 ug/ml
5) T A~2-methylnaphthalene...	7.210	9743308	10.285 ug/ml
6) T n-Tetradecane (C14)	8.364	9036938	10.327 ug/ml
7) T n-Hexadecane (C16)	9.958	9191943	10.354 ug/ml
8) T n-Octadecane (C18)	11.395	9304882	10.373 ug/ml
10) T n-Eicosane (C20)	12.699	9248681	10.366 ug/ml
11) T n-Heneicosane (C21)	13.309	9260798	10.345 ug/ml
13) T n-Docosane (C22)	13.892	9195849	10.324 ug/ml
14) T n-Tetracosane (C24)	14.989	9005449	10.272 ug/ml
15) T n-Hexacosane (C26)	16.005	8574582	10.198 ug/ml
16) T n-Octacosane (C28)	16.950	7916934	10.127 ug/ml
17) T n-Tricontane (C30)	17.833	7027462	10.193 ug/ml
18) T n-Dotriacontane (C32)	18.661	5731236	10.288 ug/ml
19) T n-Tetratriacontane (C34)	19.438	4251212	10.329 ug/ml
20) T n-Hexatriacontane (C36)	20.173	2871363	10.371 ug/ml
21) T n-Octatriacontane (C38)	20.919	1881370	10.445 ug/ml
22) T n-Tetracontane (C40)	21.846	1280516	10.458 ug/ml

(f)=RT Delta > 1/2 Window

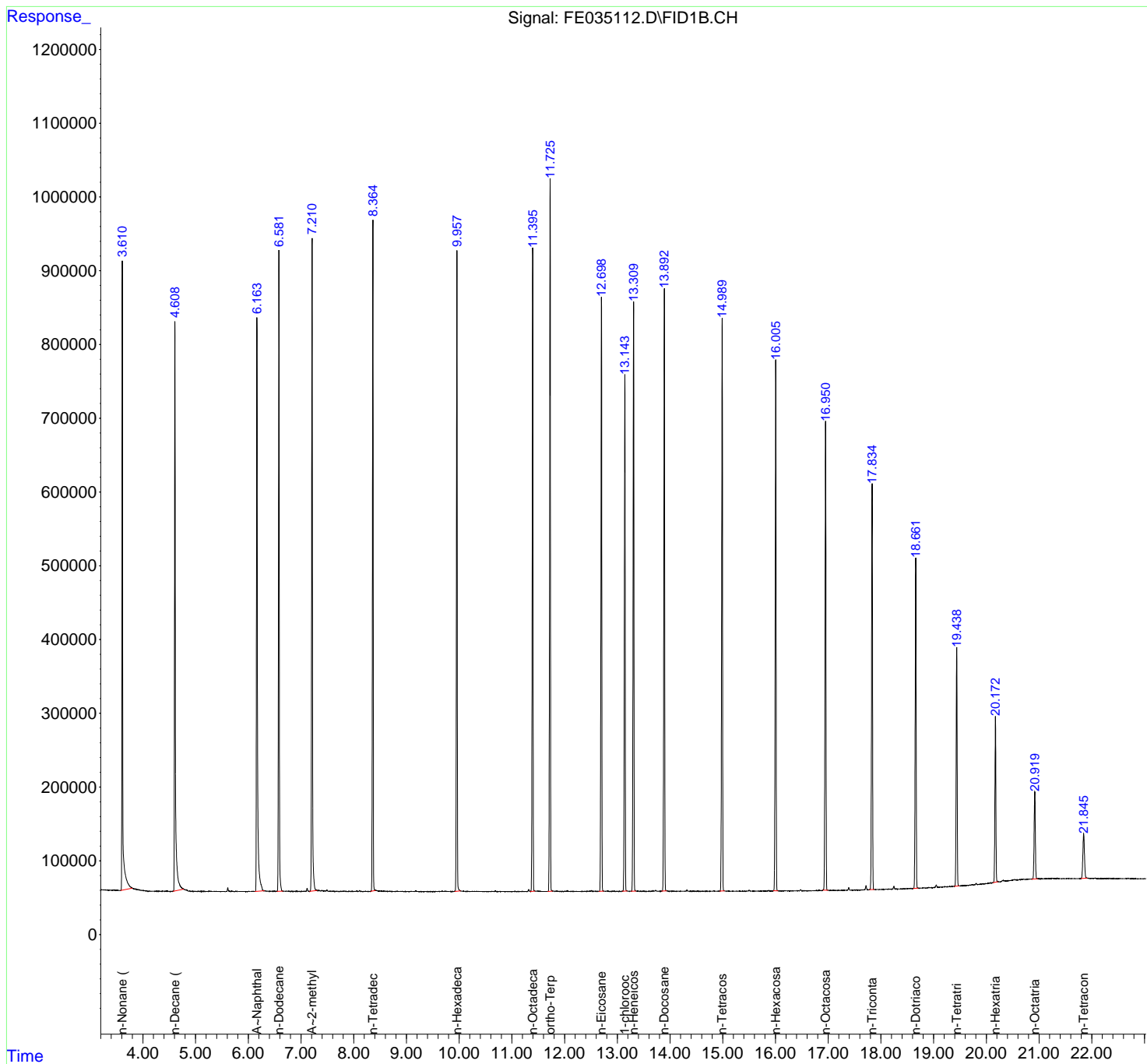
(m)=manual int.

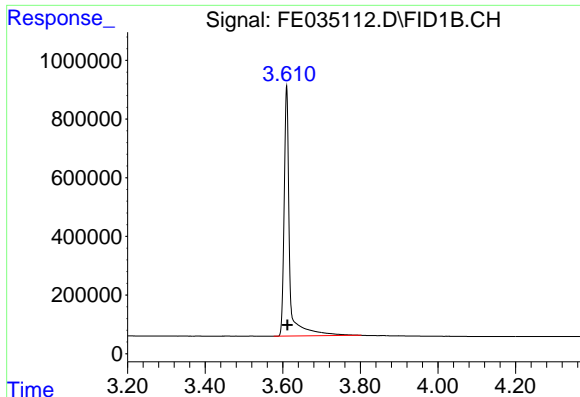
Data Path : Z:\pestpcbsrv\HPCHEM1\FID_E\Data\FE022222AL\
 Data File : FE035112.D
 Signal(s) : FID1B.CH
 Acq On : 21 Feb 2022 18:17
 Operator : YP\AJ
 Sample : 10 PPM ALIPHATIC HC STD4
 Misc :
 ALS Vial : 5 Sample Multiplier: 1

Instrument :
 FID_E
 ClientSampleId :
 10 PPM ALIPHATIC HC STD4

Integration File: sample.E
 Quant Time: Feb 22 01:20:24 2022
 Quant Method : Z:\pestpcbsrv\HPCHEM1\FID_E\methods\Aliphatic EPH 022222.M
 Quant Title : GC Extractables
 QLast Update : Tue Feb 22 01:19:17 2022
 Response via : Initial Calibration
 Integrator: ChemStation 6890 Scale Mode: Large solvent peaks clipped

Volume Inj. : 1 ul
 Signal Phase : Rxi-1ms
 Signal Info : 20M x 0.18mm x 0.18um

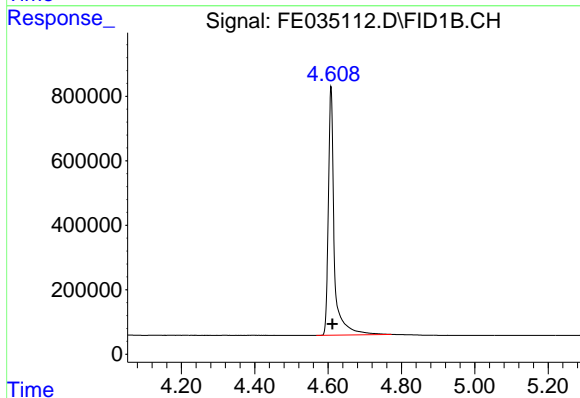




#1 n-Nonane (C9)

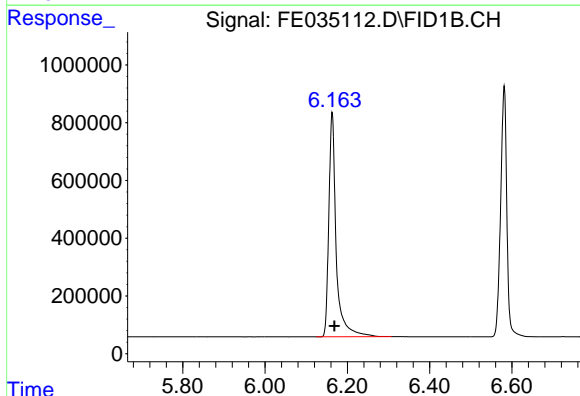
R.T.: 3.610 min
 Delta R.T.: -0.002 min
 Response: 8359951
 Conc: 10.19 ug/ml

Instrument :
 FID_E
 ClientSampleId :
 10 PPM ALIPHATIC HC STD4



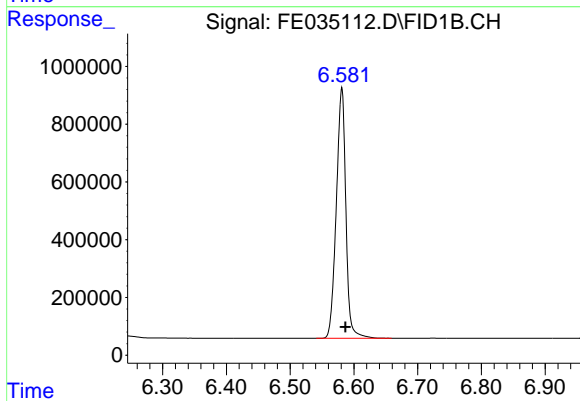
#2 n-Decane (C10)

R.T.: 4.608 min
 Delta R.T.: -0.004 min
 Response: 8656560
 Conc: 10.27 ug/ml



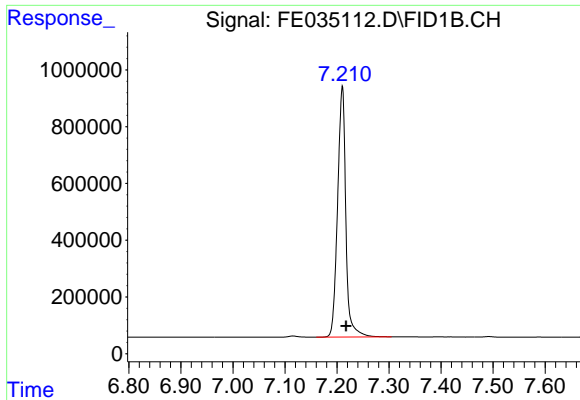
#3 A~Naphthalene (C11.7)

R.T.: 6.163 min
 Delta R.T.: -0.006 min
 Response: 9676881
 Conc: 10.31 ug/ml



#4 n-Dodecane (C12)

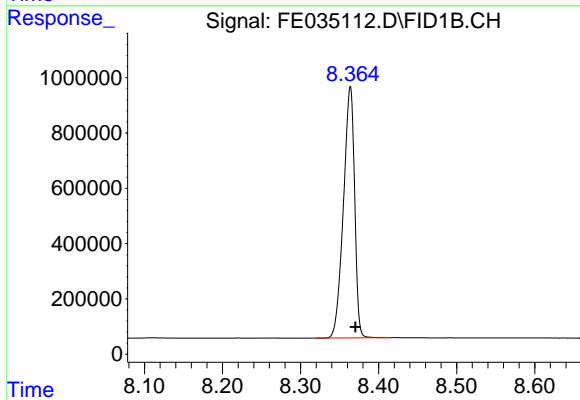
R.T.: 6.581 min
 Delta R.T.: -0.005 min
 Response: 9047559
 Conc: 10.37 ug/ml



#5 A~2-methylnaphthalene (C12.89)

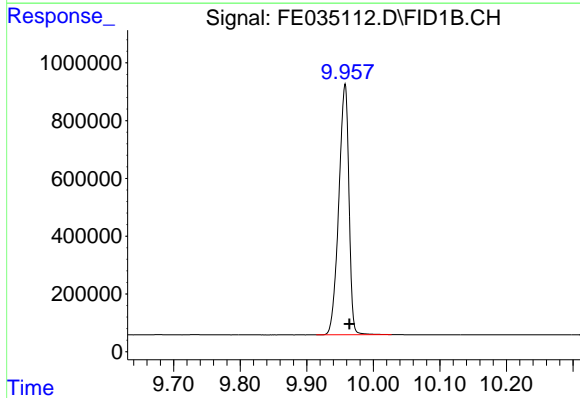
R.T.: 7.210 min
Delta R.T.: -0.007 min
Response: 9743308
Conc: 10.28 ug/ml

Instrument :
FID_E
ClientSampleId :
10 PPM ALIPHATIC HC STD4



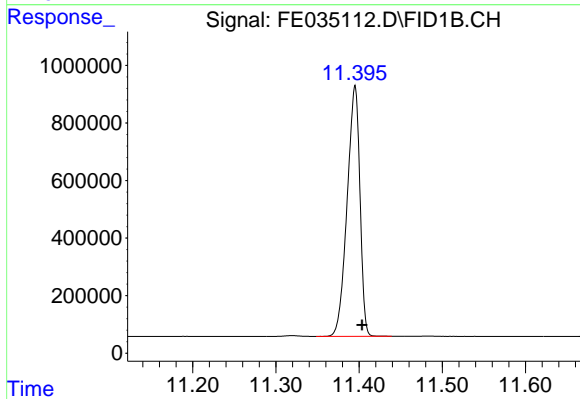
#6 n-Tetradecane (C14)

R.T.: 8.364 min
Delta R.T.: -0.007 min
Response: 9036938
Conc: 10.33 ug/ml



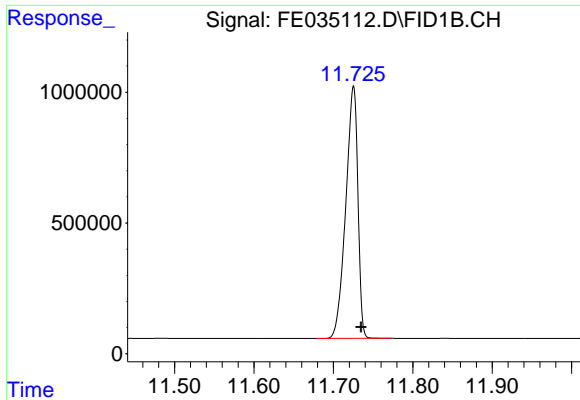
#7 n-Hexadecane (C16)

R.T.: 9.958 min
Delta R.T.: -0.007 min
Response: 9191943
Conc: 10.35 ug/ml



#8 n-Octadecane (C18)

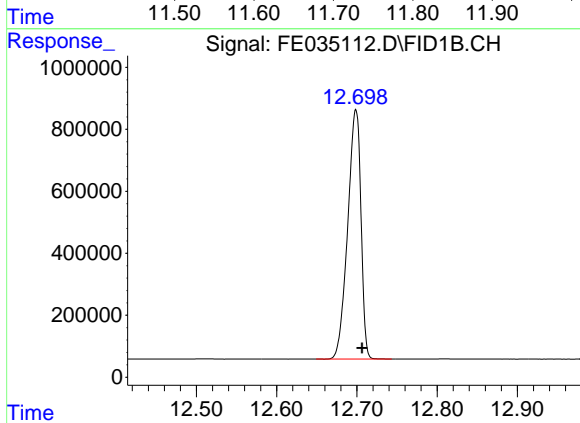
R.T.: 11.395 min
Delta R.T.: -0.008 min
Response: 9304882
Conc: 10.37 ug/ml



#9 ortho-Terphenyl (SURR)

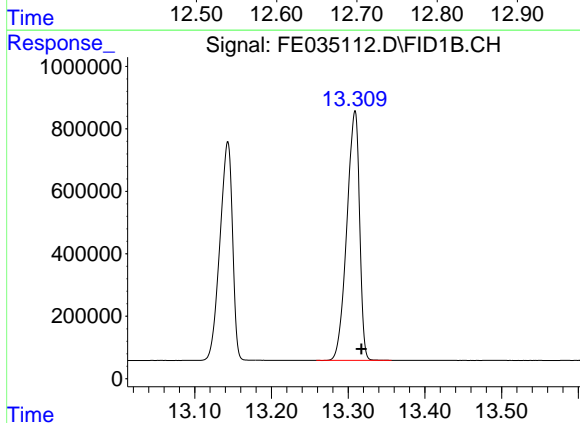
R.T.: 11.725 min
 Delta R.T.: -0.009 min
 Response: 10245677
 Conc: 10.33 ug/ml

Instrument : FID_E
 ClientSampleId : 10 PPM ALIPHATIC HC STD4



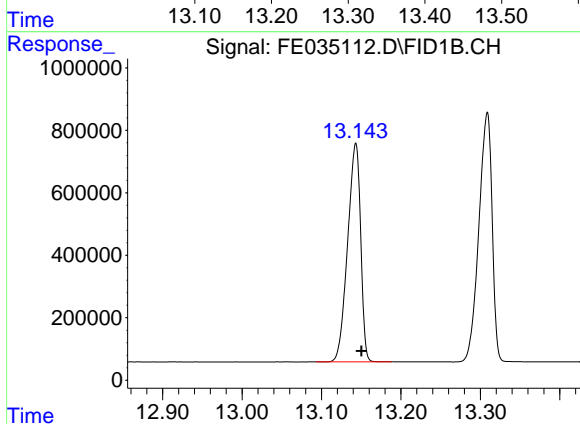
#10 n-Eicosane (C20)

R.T.: 12.699 min
 Delta R.T.: -0.008 min
 Response: 9248681
 Conc: 10.37 ug/ml



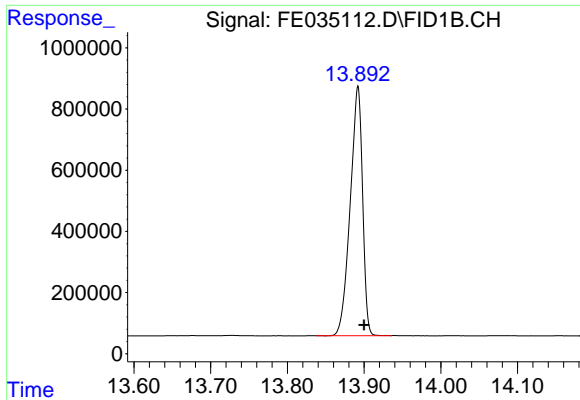
#11 n-Heneicosane (C21)

R.T.: 13.309 min
 Delta R.T.: -0.009 min
 Response: 9260798
 Conc: 10.34 ug/ml



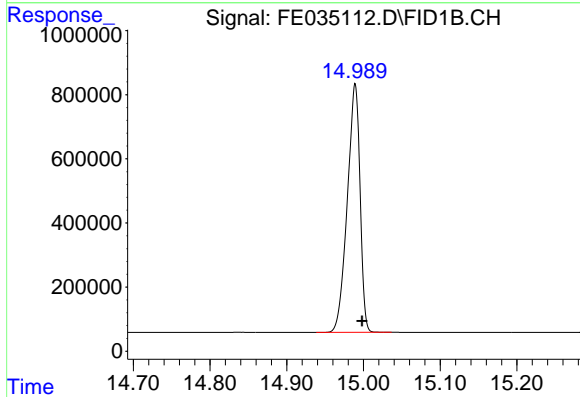
#12 1-chlorooctadecane (SURR)

R.T.: 13.143 min
 Delta R.T.: -0.007 min
 Response: 7961225
 Conc: 10.30 ug/ml

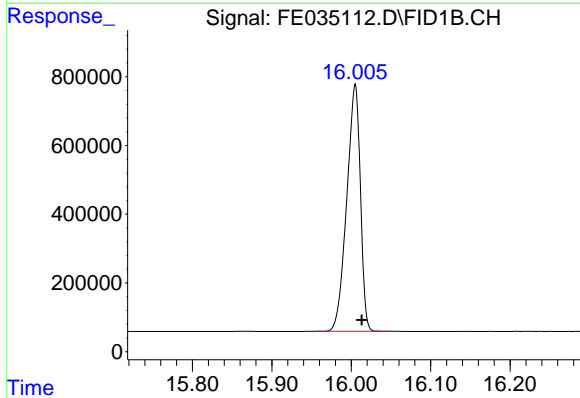


#13 n-Docosane (C22)
 R.T.: 13.892 min
 Delta R.T.: -0.008 min
 Response: 9195849
 Conc: 10.32 ug/ml

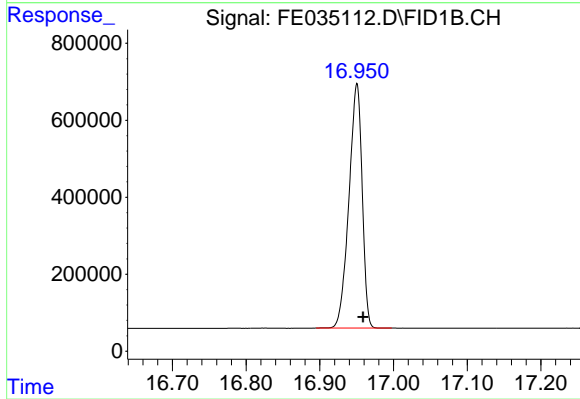
Instrument :
 FID_E
 ClientSampleId :
 10 PPM ALIPHATIC HC STD4



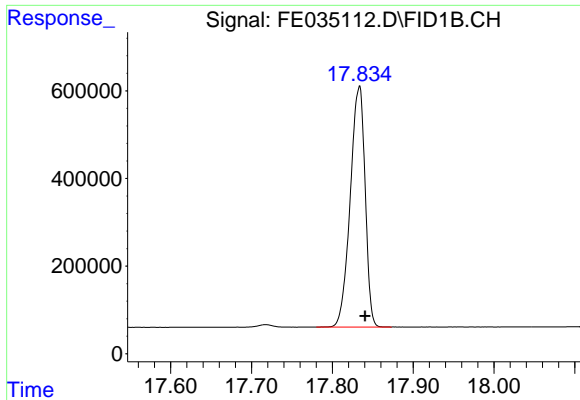
#14 n-Tetracosane (C24)
 R.T.: 14.989 min
 Delta R.T.: -0.009 min
 Response: 9005449
 Conc: 10.27 ug/ml



#15 n-Hexacosane (C26)
 R.T.: 16.005 min
 Delta R.T.: -0.008 min
 Response: 8574582
 Conc: 10.20 ug/ml



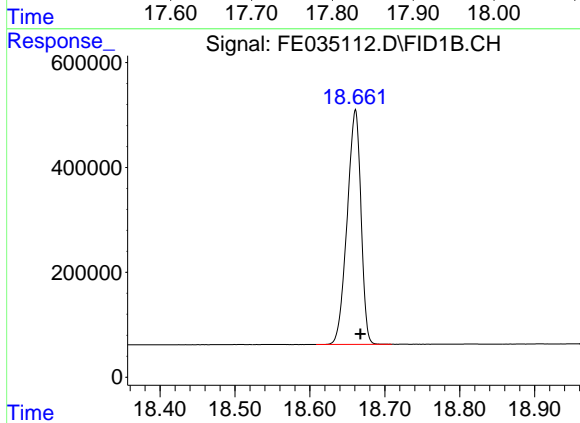
#16 n-Octacosane (C28)
 R.T.: 16.950 min
 Delta R.T.: -0.008 min
 Response: 7916934
 Conc: 10.13 ug/ml



#17 n-Tricontane (C30)

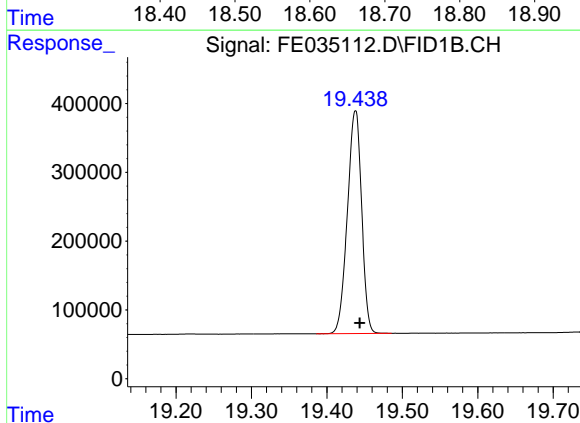
R.T.: 17.833 min
Delta R.T.: -0.007 min
Response: 7027462
Conc: 10.19 ug/ml

Instrument :
FID_E
ClientSampleId :
10 PPM ALIPHATIC HC STD4



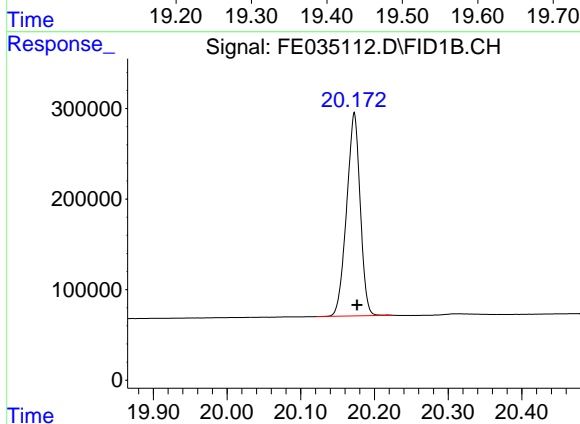
#18 n-Dotriacontane (C32)

R.T.: 18.661 min
Delta R.T.: -0.007 min
Response: 5731236
Conc: 10.29 ug/ml



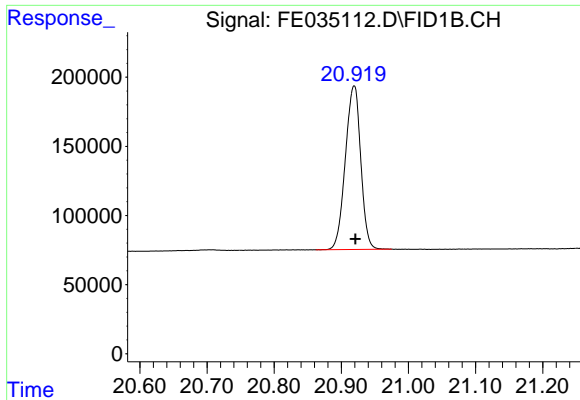
#19 n-Tetratriacontane (C34)

R.T.: 19.438 min
Delta R.T.: -0.006 min
Response: 4251212
Conc: 10.33 ug/ml



#20 n-Hexatriacontane (C36)

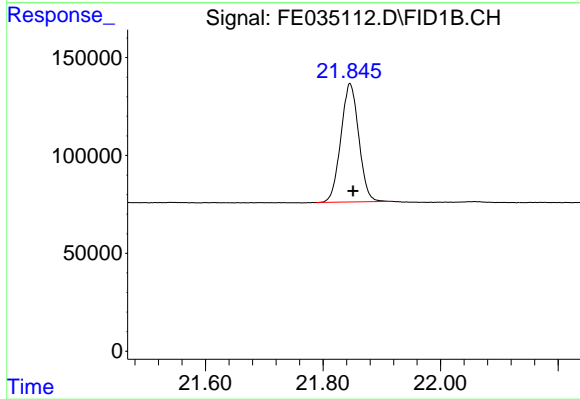
R.T.: 20.173 min
Delta R.T.: -0.004 min
Response: 2871363
Conc: 10.37 ug/ml



#21 n-Octatriacontane (C38)

R.T.: 20.919 min
Delta R.T.: -0.002 min
Response: 1881370
Conc: 10.44 ug/ml

Instrument :
FID_E
ClientSampleId :
10 PPM ALIPHATIC HC STD4



#22 n-Tetracontane (C40)

R.T.: 21.846 min
Delta R.T.: -0.006 min
Response: 1280516
Conc: 10.46 ug/ml