

Data Path : Z:\pestpcbsrv\HPCHEM1\FID_E\Data\FE022425AL\
 Data File : FE052472.D
 Signal(s) : FID1B.ch
 Acq On : 24 Feb 2025 17:50
 Operator : YP\AJ
 Sample : Q1411-03D
 Misc :
 ALS Vial : 17 Sample Multiplier: 1

Instrument :
 FID_E
ClientSampleId :
 HR-03-02212025

Manual Integrations
APPROVED
 Reviewed By :Yogesh Patel 02/25/2025
 Supervised By :Ankita Jodhani 02/25/2025

Integration File: autoint1.e
 Quant Time: Feb 25 00:29:01 2025
 Quant Method : Z:\pestpcbsrv\HPCHEM1\FID_E\methods\Aliphatic EPH 021325.M
 Quant Title : GC Extractables
 QLast Update : Fri Feb 14 00:50:00 2025
 Response via : Initial Calibration
 Integrator: ChemStation

Volume Inj. : 1 ul
 Signal Phase : Rxi-1ms
 Signal Info : 20M x 0.18mm x 0.18um

Compound	R.T.	Response	Conc Units
System Monitoring Compounds			
9) S ortho-Terphenyl (SURR)	11.920	5992460	32.057 ug/mlm
Spiked Amount	50.000	Recovery =	64.11%
12) S 1-chlorooctadecane (S...	13.367	4851362	34.903 ug/mlm
Spiked Amount	50.000	Recovery =	69.81%

Target Compounds

(f)=RT Delta > 1/2 Window

(m)=manual int.

Data Path : Z:\pestpcbsrv\HPCHEM1\FID_E\Data\FE022425AL\
Data File : FE052472.D
Signal(s) : FID1B.ch
Acq On : 24 Feb 2025 17:50
Operator : YP\AJ
Sample : Q1411-03D
Misc :
ALS Vial : 17 Sample Multiplier: 1

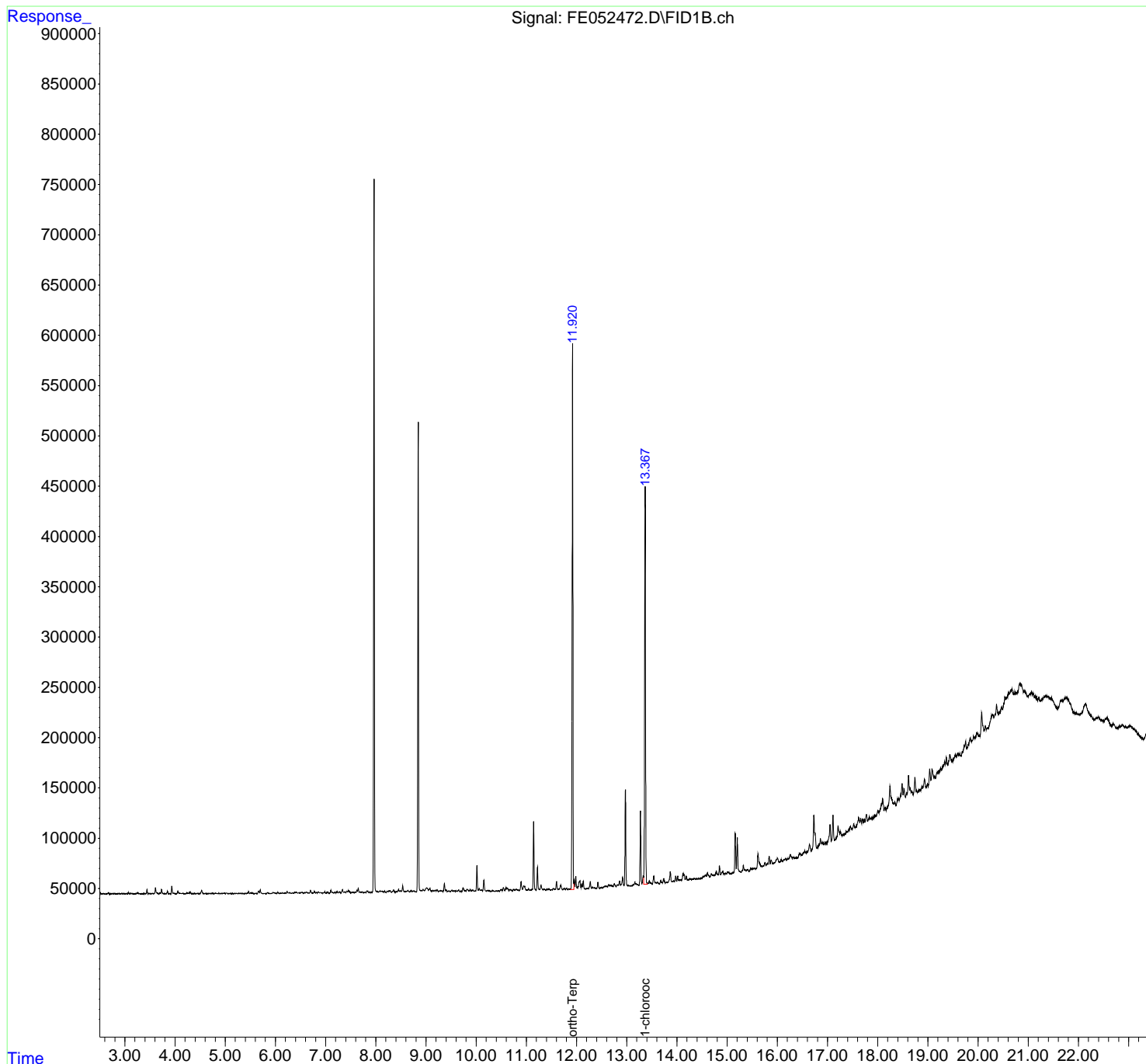
Instrument :
FID_E
ClientSampleId :
HR-03-02212025

Manual Integrations
APPROVED

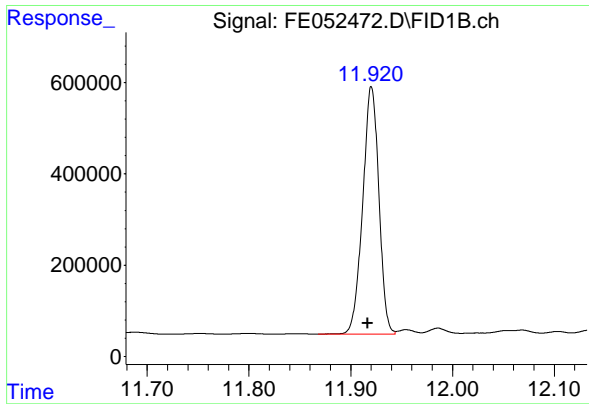
Reviewed By :Yogesh Patel 02/25/2025
Supervised By :Ankita Jodhani 02/25/2025

Integration File: autoint1.e
Quant Time: Feb 25 00:29:01 2025
Quant Method : Z:\pestpcbsrv\HPCHEM1\FID_E\methods\Aliphatic EPH 021325.
Quant Title : GC Extractables
QLast Update : Fri Feb 14 00:50:00 2025
Response via : Initial Calibration
Integrator: ChemStation

Volume Inj. : 1 ul
Signal Phase : Rxi-1ms
Signal Info : 20M x 0.18mm x 0.18um



ortho-Terp
1-chlorooc



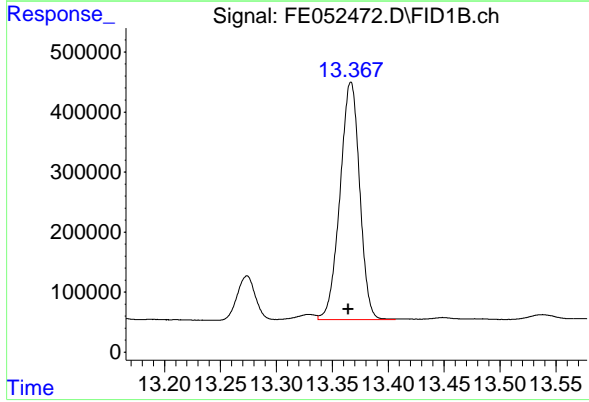
#9 ortho-Terphenyl (SURR)

R.T.: 11.920 min
 Delta R.T.: 0.003 min
 Response: 5992460
 Conc: 32.06 ug/ml

Instrument : FID_E
 ClientSampleId : HR-03-02212025

Manual Integrations
 APPROVED

Reviewed By :Yogesh Patel 02/25/2025
 Supervised By :Ankita Jodhani 02/25/2025



#12 1-chlorooctadecane (SURR)

R.T.: 13.367 min
 Delta R.T.: 0.003 min
 Response: 4851362
 Conc: 34.90 ug/ml m