

Data Path : Z:\pestpcbsrv\HPCHEM1\FID\_E\Data\FE022624AL\  
 Data File : FE046932.D  
 Signal(s) : FID1B.ch  
 Acq On : 26 Feb 2024 18:45  
 Operator : YP\AJ  
 Sample : P1585-01  
 Misc :  
 ALS Vial : 14 Sample Multiplier: 1

Integration File: autoint1.e  
 Quant Time: Feb 26 22:55:29 2024  
 Quant Method : Z:\pestpcbsrv\HPCHEM1\FID\_E\methods\Aliphatic EPH 022024.M  
 Quant Title : GC Extractables  
 QLast Update : Tue Feb 20 11:04:00 2024  
 Response via : Initial Calibration  
 Integrator: ChemStation

Volume Inj. : 1 ul  
 Signal Phase : Rxi-1ms  
 Signal Info : 20M x 0.18mm x 0.18um

Compound	R.T.	Response	Conc Units
-----			
System Monitoring Compounds			
9) S ortho-Terphenyl (SURR)	11.798	3940673	23.985 ug/ml
Spiked Amount	50.000	Recovery	= 47.97%
12) S 1-chlorooctadecane (S...	13.240	3116055	25.313 ug/ml
Spiked Amount	50.000	Recovery	= 50.63%
Target Compounds			
13) T n-Docosane (C22)	13.991	16294	0.112 ug/ml
14) T n-Tetracosane (C24)	15.096	43314	0.303 ug/ml
15) T n-Hexacosane (C26)	16.117	49256	0.352 ug/ml
16) T n-Octacosane (C28)	17.068	41093	0.302 ug/ml
17) T n-Tricontane (C30)	17.955	1570	0.011 ug/ml
18) T n-Dotriacontane (C32)	18.798	102690	0.746 ug/ml
19) T n-Tetratriacontane (C34)	19.591	152061	1.132 ug/ml
20) T n-Hexatriacontane (C36)	20.305	118814	0.892 ug/ml
21) T n-Octatriacontane (C38)	21.007	26786	0.194 ug/ml
22) T n-Tetracontane (C40)	21.898	147454	1.045 ug/ml
-----			

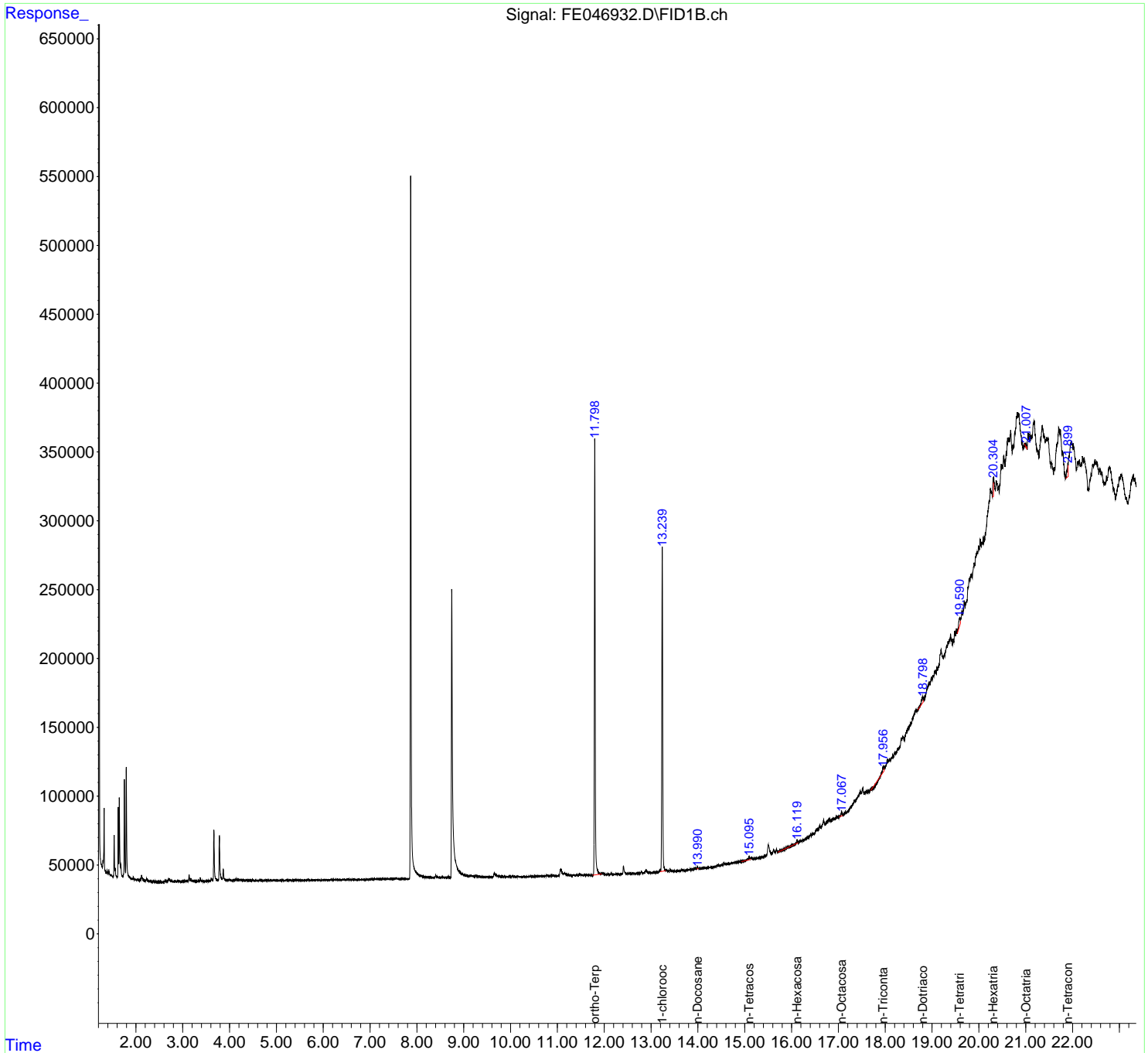
(f)=RT Delta > 1/2 Window

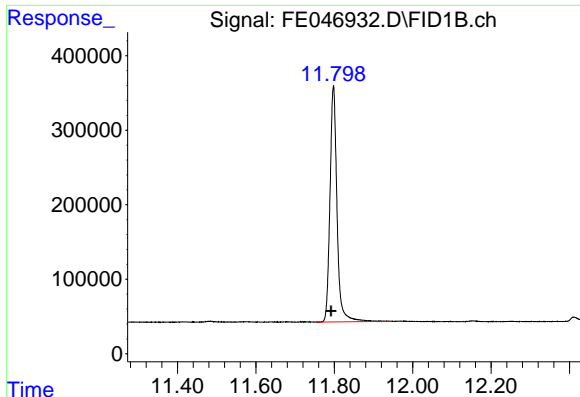
(m)=manual int.

Data Path : Z:\pestpcbsrv\HPCHEM1\FID\_E\Data\FE022624AL\  
 Data File : FE046932.D  
 Signal(s) : FID1B.ch  
 Acq On : 26 Feb 2024 18:45  
 Operator : YP\AJ  
 Sample : P1585-01  
 Misc :  
 ALS Vial : 14 Sample Multiplier: 1

Integration File: autoint1.e  
 Quant Time: Feb 26 22:55:29 2024  
 Quant Method : Z:\pestpcbsrv\HPCHEM1\FID\_E\methods\Aliphatic EPH 022024.M  
 Quant Title : GC Extractables  
 QLast Update : Tue Feb 20 11:04:00 2024  
 Response via : Initial Calibration  
 Integrator: ChemStation

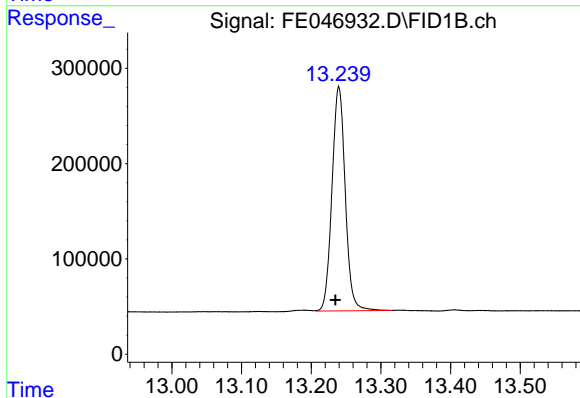
Volume Inj. : 1 ul  
 Signal Phase : Rxi-1ms  
 Signal Info : 20M x 0.18mm x 0.18um





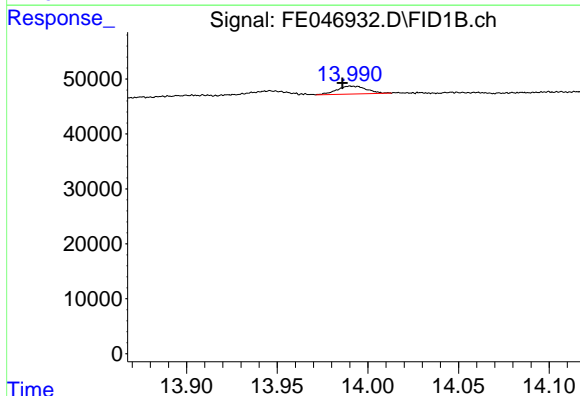
#9 ortho-Terphenyl (SURR)

R.T.: 11.798 min  
Delta R.T.: 0.006 min  
Response: 3940673  
Conc: 23.98 ug/ml



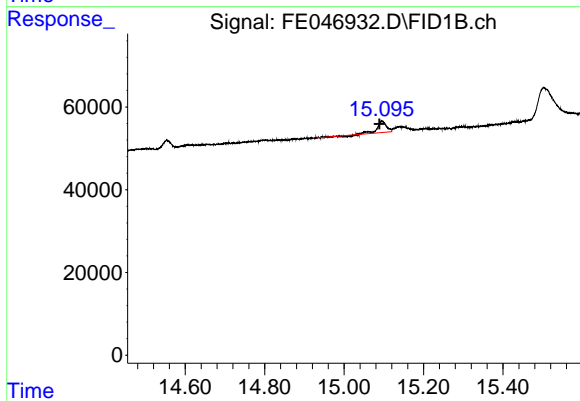
#12 1-chlorooctadecane (SURR)

R.T.: 13.240 min  
Delta R.T.: 0.005 min  
Response: 3116055  
Conc: 25.31 ug/ml



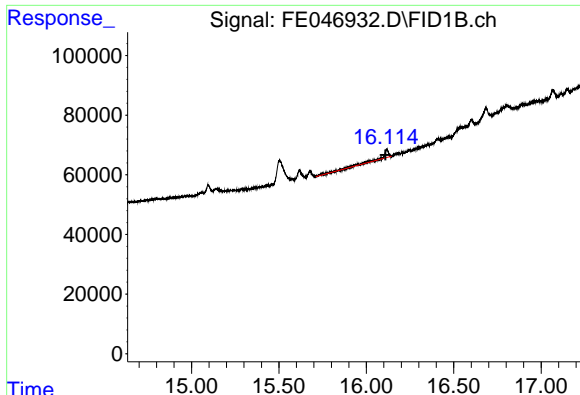
#13 n-Docosane (C22)

R.T.: 13.991 min  
Delta R.T.: 0.005 min  
Response: 16294  
Conc: 0.11 ug/ml



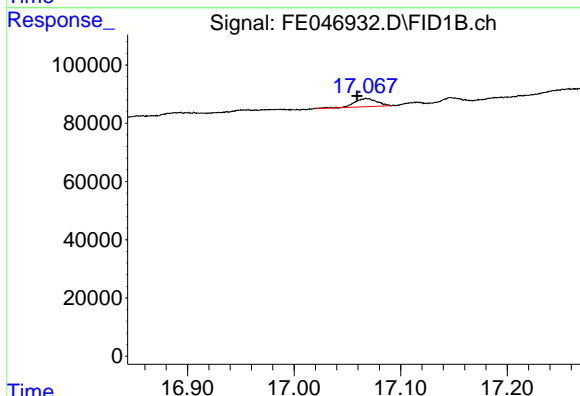
#14 n-Tetracosane (C24)

R.T.: 15.096 min  
Delta R.T.: 0.007 min  
Response: 43314  
Conc: 0.30 ug/ml



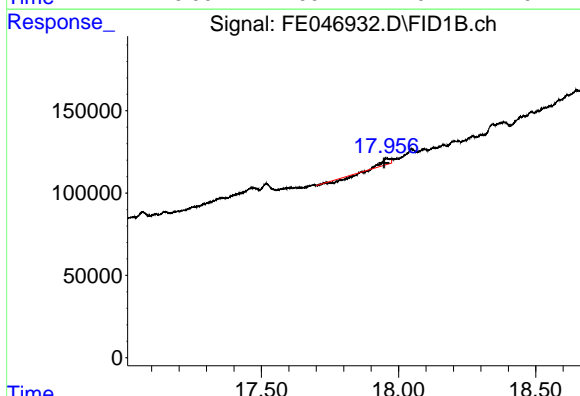
#15 n-Hexacosane (C26)

R.T.: 16.117 min  
Delta R.T.: 0.008 min  
Response: 49256  
Conc: 0.35 ug/ml



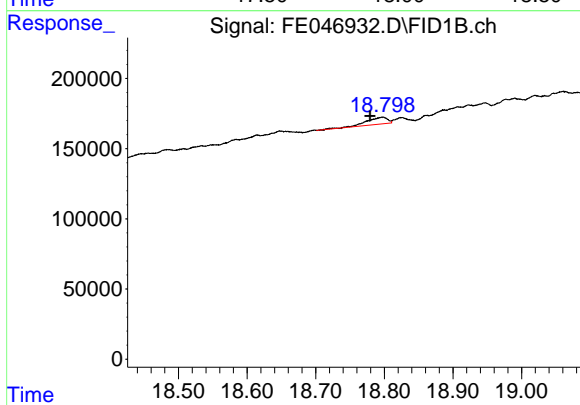
#16 n-Octacosane (C28)

R.T.: 17.068 min  
Delta R.T.: 0.008 min  
Response: 41093  
Conc: 0.30 ug/ml



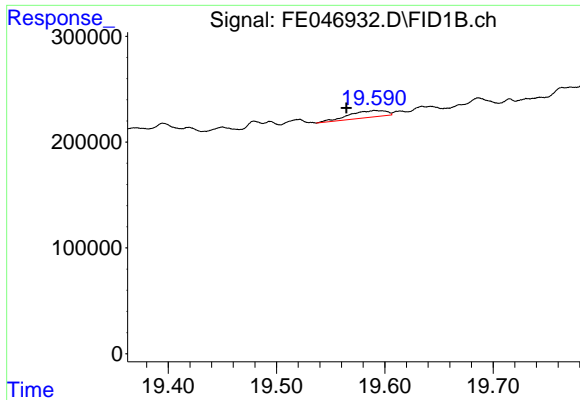
#17 n-Tricontane (C30)

R.T.: 17.955 min  
Delta R.T.: 0.009 min  
Response: 1570  
Conc: 0.01 ug/ml



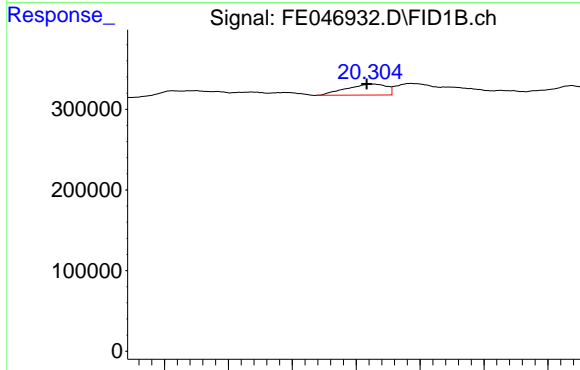
#18 n-Dotriacontane (C32)

R.T.: 18.798 min  
Delta R.T.: 0.019 min  
Response: 102690  
Conc: 0.75 ug/ml



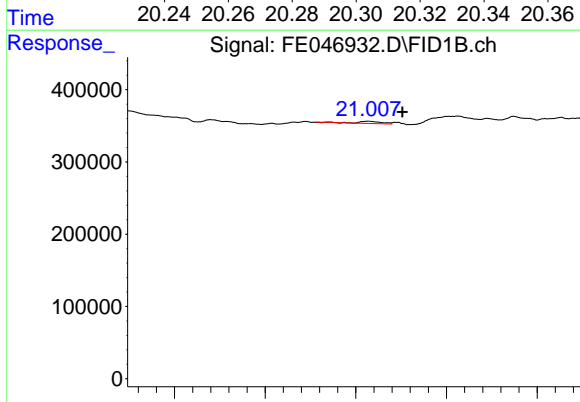
#19 n-Tetratriacontane (C34)

R.T.: 19.591 min  
Delta R.T.: 0.026 min  
Response: 152061  
Conc: 1.13 ug/ml



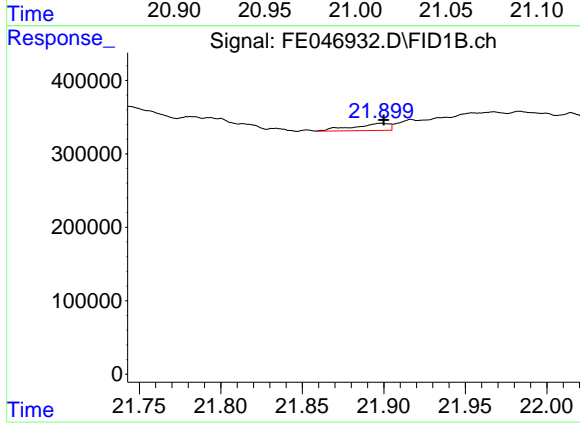
#20 n-Hexatriacontane (C36)

R.T.: 20.305 min  
Delta R.T.: 0.002 min  
Response: 118814  
Conc: 0.89 ug/ml



#21 n-Octatriacontane (C38)

R.T.: 21.007 min  
Delta R.T.: -0.019 min  
Response: 26786  
Conc: 0.19 ug/ml



#22 n-Tetracontane (C40)

R.T.: 21.898 min  
Delta R.T.: -0.002 min  
Response: 147454  
Conc: 1.05 ug/ml