

Data Path : Z:\pestpcbsrv\HPCHEM1\FID_E\Data\FE022724AL\
 Data File : FE046943.D
 Signal(s) : FID1B.ch
 Acq On : 27 Feb 2024 15:31
 Operator : YP\AJ
 Sample : PB159320BL
 Misc :
 ALS Vial : 6 Sample Multiplier: 1

Integration File: autoint1.e
 Quant Time: Feb 28 04:49:02 2024
 Quant Method : Z:\pestpcbsrv\HPCHEM1\FID_E\methods\Aliphatic EPH 022024.M
 Quant Title : GC Extractables
 QLast Update : Tue Feb 20 11:04:00 2024
 Response via : Initial Calibration
 Integrator: ChemStation

Volume Inj. : 1 ul
 Signal Phase : Rxi-1ms
 Signal Info : 20M x 0.18mm x 0.18um

Compound	R.T.	Response	Conc Units

System Monitoring Compounds			
9) S ortho-Terphenyl (SURR)	11.795	3968093	24.152 ug/mlm
Spiked Amount	50.000	Recovery	= 48.30%
12) S 1-chlorooctadecane (S...	13.238	3206641	26.049 ug/mlm
Spiked Amount	50.000	Recovery	= 52.10%

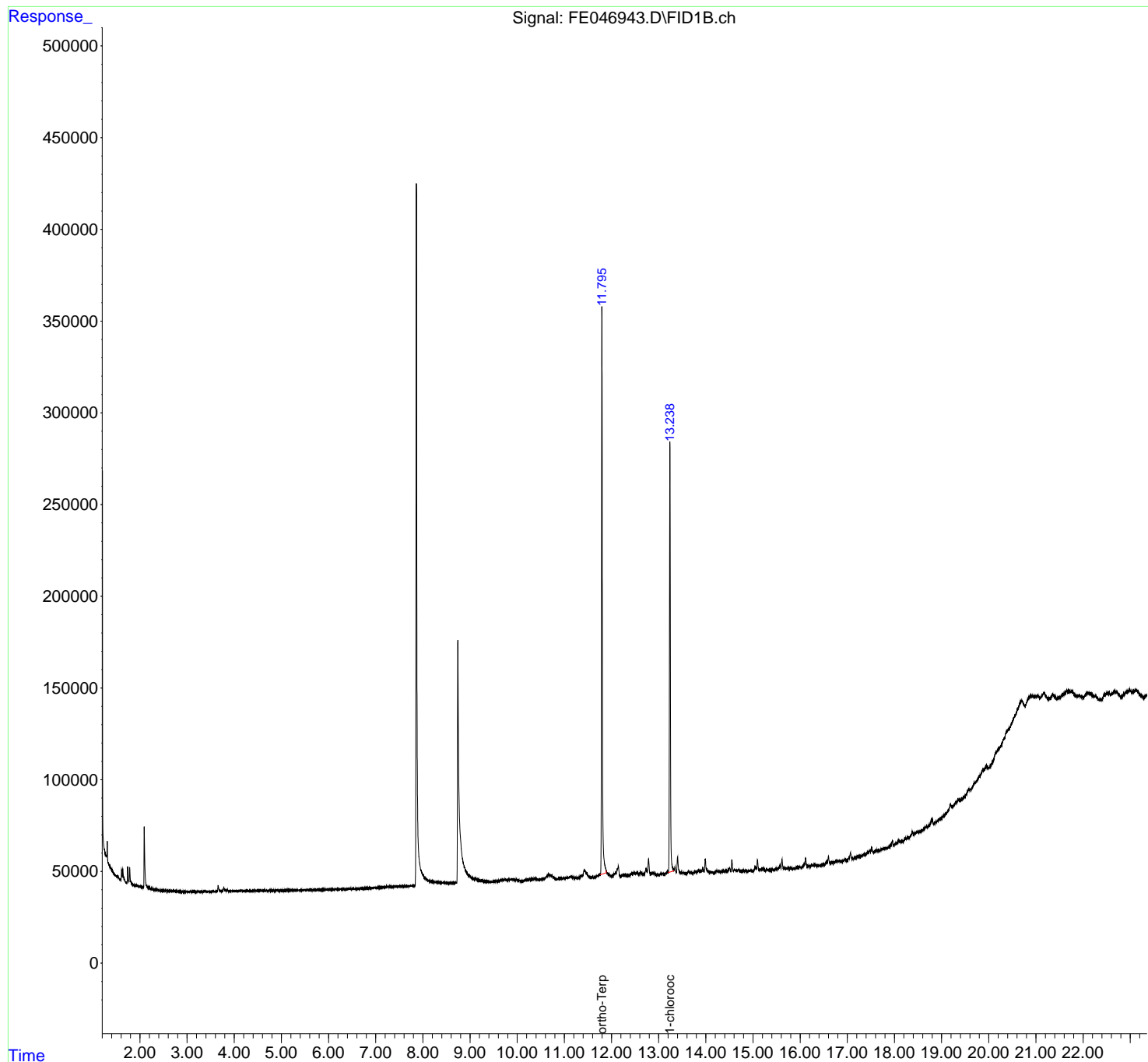
Target Compounds

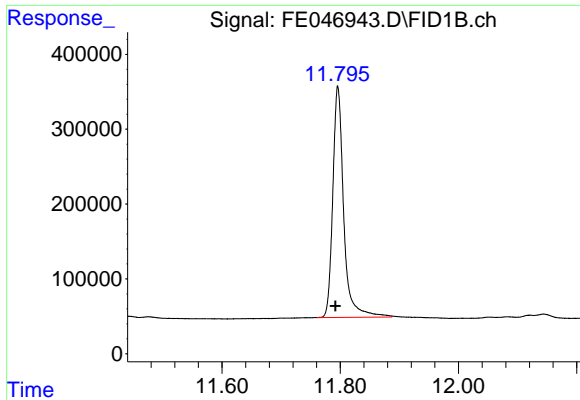
(f)=RT Delta > 1/2 Window (m)=manual int.

Data Path : Z:\pestpcbsrv\HPCHEM1\FID_E\Data\FE022724AL\
Data File : FE046943.D
Signal(s) : FID1B.ch
Acq On : 27 Feb 2024 15:31
Operator : YP\AJ
Sample : PB159320BL
Misc :
ALS Vial : 6 Sample Multiplier: 1

Integration File: autoint1.e
Quant Time: Feb 28 04:49:02 2024
Quant Method : Z:\pestpcbsrv\HPCHEM1\FID_E\methods\Aliphatic EPH 022024.M
Quant Title : GC Extractables
QLast Update : Tue Feb 20 11:04:00 2024
Response via : Initial Calibration
Integrator: ChemStation

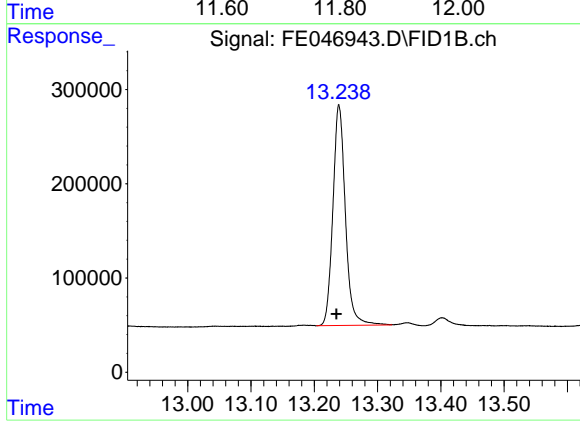
Volume Inj. : 1 ul
Signal Phase : Rxi-1ms
Signal Info : 20M x 0.18mm x 0.18um





#9 ortho-Terphenyl (SURR)

R.T.: 11.795 min
Delta R.T.: 0.003 min
Response: 3968093
Conc: 24.15 ug/ml m



#12 1-chlorooctadecane (SURR)

R.T.: 13.238 min
Delta R.T.: 0.003 min
Response: 3206641
Conc: 26.05 ug/ml m