

Data Path : Z:\pestpcbsrv\HPCHEM1\FID_E\Data\FE022724AL\
 Data File : FE046953.D
 Signal(s) : FID1B.ch
 Acq On : 28 Feb 2024 01:47
 Operator : YP\AJ
 Sample : P1602-10D
 Misc :
 ALS Vial : 16 Sample Multiplier: 1

Integration File: autoint1.e
 Quant Time: Feb 28 04:51:32 2024
 Quant Method : Z:\pestpcbsrv\HPCHEM1\FID_E\methods\Aliphatic EPH 022024.M
 Quant Title : GC Extractables
 QLast Update : Tue Feb 20 11:04:00 2024
 Response via : Initial Calibration
 Integrator: ChemStation

Volume Inj. : 1 ul
 Signal Phase : Rxi-1ms
 Signal Info : 20M x 0.18mm x 0.18um

Compound	R.T.	Response	Conc Units

System Monitoring Compounds			
9) S ortho-Terphenyl (SURR)	11.797	5415282	32.960 ug/ml
Spiked Amount	50.000	Recovery	= 65.92%
12) S 1-chlorooctadecane (S...	13.239	5246848	42.623 ug/ml
Spiked Amount	50.000	Recovery	= 85.25%

Target Compounds

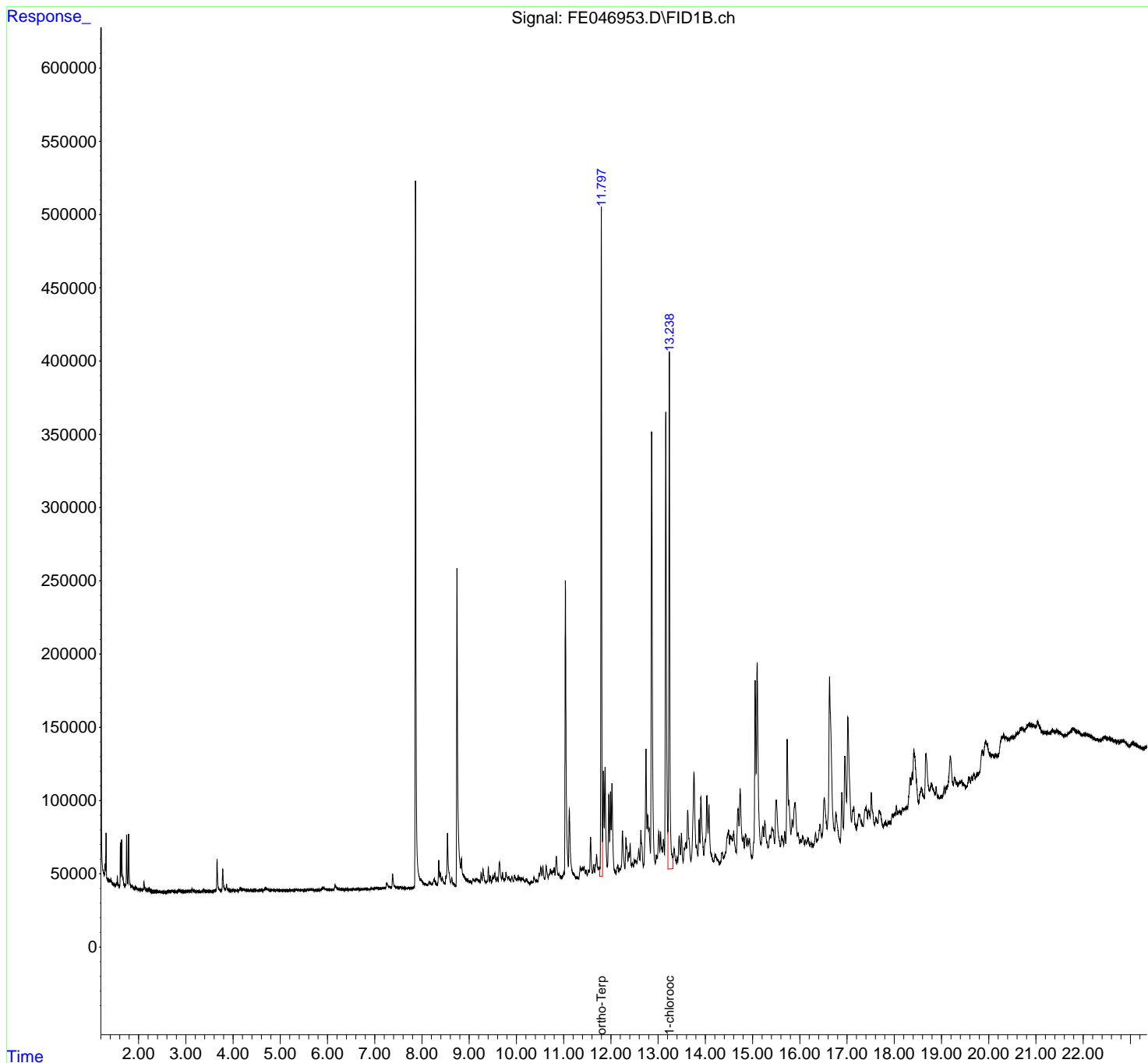
(f)=RT Delta > 1/2 Window

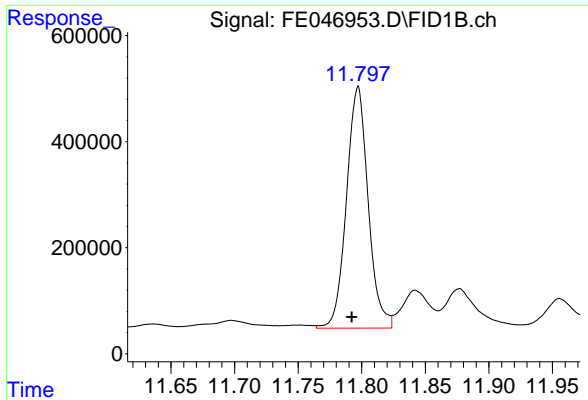
(m)=manual int.

Data Path : Z:\pestpcbsrv\HPCHEM1\FID_E\Data\FE022724AL\
 Data File : FE046953.D
 Signal(s) : FID1B.ch
 Acq On : 28 Feb 2024 01:47
 Operator : YP\AJ
 Sample : P1602-10D
 Misc :
 ALS Vial : 16 Sample Multiplier: 1

Integration File: autoint1.e
 Quant Time: Feb 28 04:51:32 2024
 Quant Method : Z:\pestpcbsrv\HPCHEM1\FID_E\methods\Aliphatic EPH 022024.M
 Quant Title : GC Extractables
 QLast Update : Tue Feb 20 11:04:00 2024
 Response via : Initial Calibration
 Integrator: ChemStation

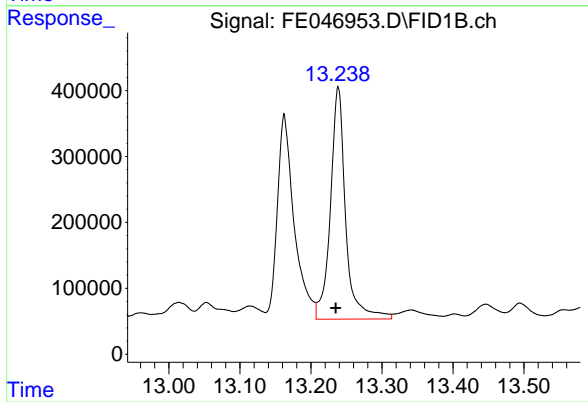
Volume Inj. : 1 ul
 Signal Phase : Rxi-1ms
 Signal Info : 20M x 0.18mm x 0.18um





#9 ortho-Terphenyl (SURR)

R.T.: 11.797 min
Delta R.T.: 0.005 min
Response: 5415282
Conc: 32.96 ug/ml



#12 1-chlorooctadecane (SURR)

R.T.: 13.239 min
Delta R.T.: 0.004 min
Response: 5246848
Conc: 42.62 ug/ml