

Data Path : Z:\pestpcbsrv\HPCHEM1\FID_E\Data\FE022924AL\
 Data File : FE046986.D
 Signal(s) : FID1B.ch
 Acq On : 29 Feb 2024 07:55
 Operator : YP\AJ
 Sample : I.BLK
 Misc :
 ALS Vial : 1 Sample Multiplier: 1

Integration File: autoint1.e
 Quant Time: Mar 01 01:06:50 2024
 Quant Method : Z:\pestpcbsrv\HPCHEM1\FID_E\methods\Aliphatic EPH 022024.M
 Quant Title : GC Extractables
 QLast Update : Tue Feb 20 11:04:00 2024
 Response via : Initial Calibration
 Integrator: ChemStation

Volume Inj. : 1 ul
 Signal Phase : Rxi-1ms
 Signal Info : 20M x 0.18mm x 0.18um

Compound	R.T.	Response	Conc Units

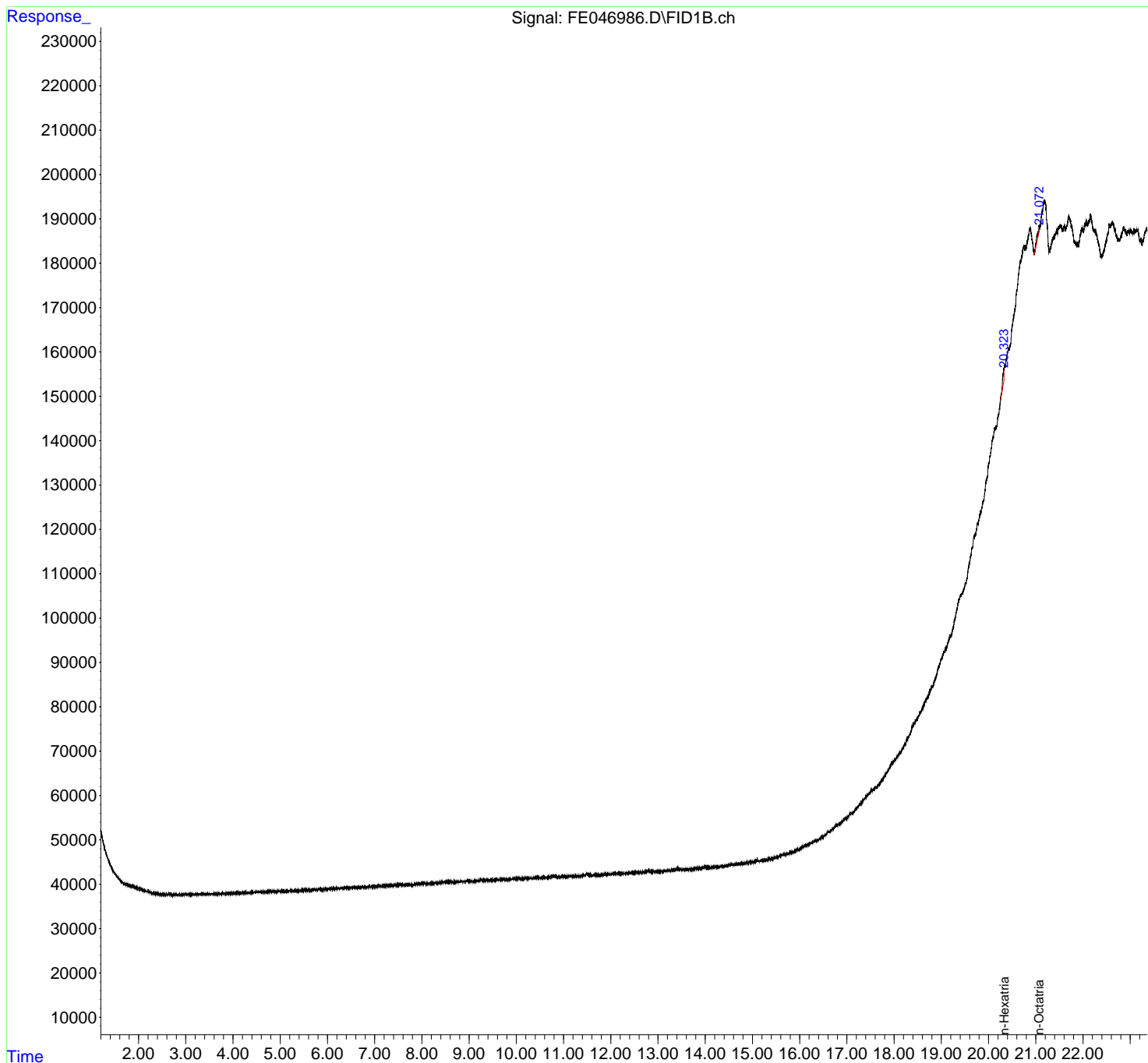
System Monitoring Compounds			
Target Compounds			
20) T n-Hexatriacontane (C36)	20.323	59230	0.445 ug/ml
21) T n-Octatriacontane (C38)	21.072	52512	0.381 ug/ml

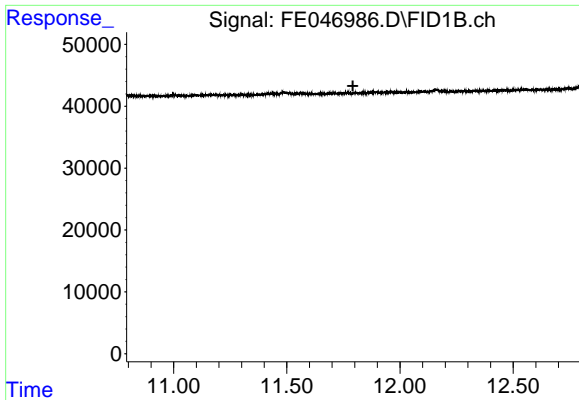
(f)=RT Delta > 1/2 Window (m)=manual int.

Data Path : Z:\pestpcbsrv\HPCHEM1\FID_E\Data\FE022924AL\
Data File : FE046986.D
Signal(s) : FID1B.ch
Acq On : 29 Feb 2024 07:55
Operator : YP\AJ
Sample : I.BLK
Misc :
ALS Vial : 1 Sample Multiplier: 1

Integration File: autoint1.e
Quant Time: Mar 01 01:06:50 2024
Quant Method : Z:\pestpcbsrv\HPCHEM1\FID_E\methods\Aliphatic EPH 022024.M
Quant Title : GC Extractables
QLast Update : Tue Feb 20 11:04:00 2024
Response via : Initial Calibration
Integrator: ChemStation

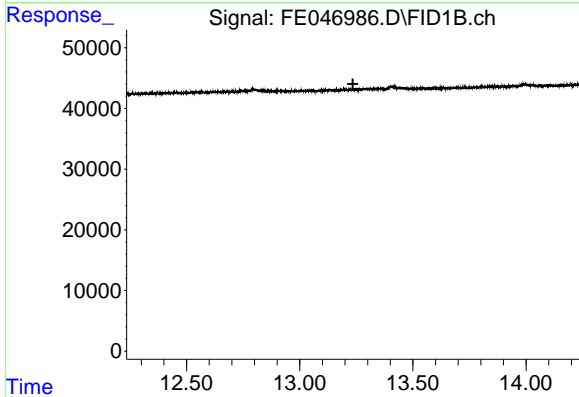
Volume Inj. : 1 ul
Signal Phase : Rxi-1ms
Signal Info : 20M x 0.18mm x 0.18um





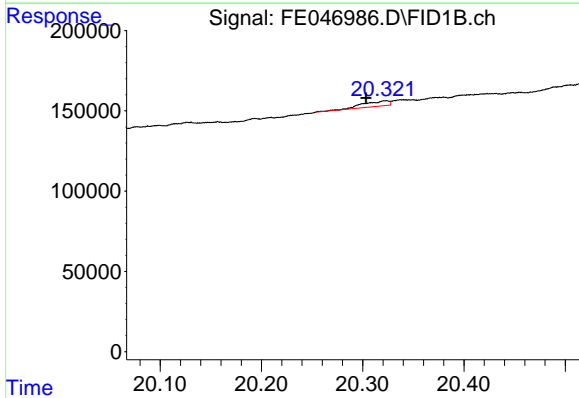
#9 ortho-Terphenyl (SURR)

R.T.: 0.000 min
 Exp R.T. : 11.792 min
 Response: 0
 Conc: N.D.



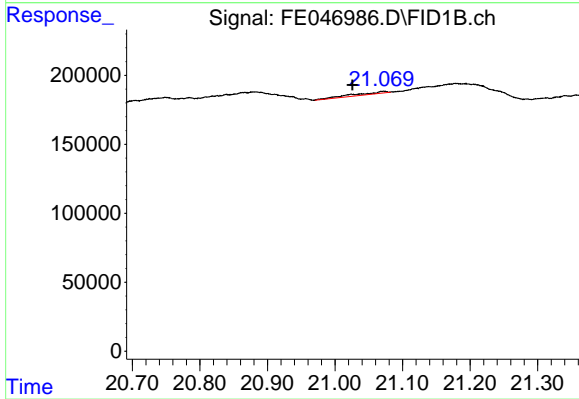
#12 1-chlorooctadecane (SURR)

R.T.: 0.000 min
 Exp R.T. : 13.235 min
 Response: 0
 Conc: N.D.



#20 n-Hexatriacontane (C36)

R.T.: 20.323 min
 Delta R.T.: 0.020 min
 Response: 59230
 Conc: 0.44 ug/ml



#21 n-Octatriacontane (C38)

R.T.: 21.072 min
 Delta R.T.: 0.047 min
 Response: 52512
 Conc: 0.38 ug/ml