

Data Path : Z:\pestpcbsrv\HPCHEM1\FID_E\Data\FE030424AL\
 Data File : FE047069.D
 Signal(s) : FID1B.ch
 Acq On : 04 Mar 2024 16:09
 Operator : YP\AJ
 Sample : P1669-01
 Misc :
 ALS Vial : 13 Sample Multiplier: 1

Integration File: autoint1.e
 Quant Time: Mar 05 00:35:28 2024
 Quant Method : Z:\pestpcbsrv\HPCHEM1\FID_E\methods\Aliphatic EPH 022024.M
 Quant Title : GC Extractables
 QLast Update : Tue Feb 20 11:04:00 2024
 Response via : Initial Calibration
 Integrator: ChemStation

Volume Inj. : 1 ul
 Signal Phase : Rxi-1ms
 Signal Info : 20M x 0.18mm x 0.18um

Compound	R.T.	Response	Conc Units

System Monitoring Compounds			
9) S ortho-Terphenyl (SURR)	11.783	4947740	30.114 ug/ml
Spiked Amount	50.000	Recovery	= 60.23%
12) S 1-chlorooctadecane (S...	13.225	3982029	32.348 ug/ml
Spiked Amount	50.000	Recovery	= 64.70%
Target Compounds			
6) T n-Tetradecane (C14)	8.390	21568	0.140 ug/ml
14) T n-Tetracosane (C24)	15.079	29809	0.209 ug/ml
15) T n-Hexacosane (C26)	16.099	48659	0.348 ug/ml
16) T n-Octacosane (C28)	17.050	26297	0.193 ug/ml
17) T n-Tricontane (C30)	17.937	158093	1.133 ug/ml
18) T n-Dotriacontane (C32)	18.769	65433	0.476 ug/ml
19) T n-Tetratriacontane (C34)	19.556	44026	0.328 ug/ml
20) T n-Hexatriacontane (C36)	20.307	39194	0.294 ug/ml
21) T n-Octatriacontane (C38)	21.047	118037	0.857 ug/ml

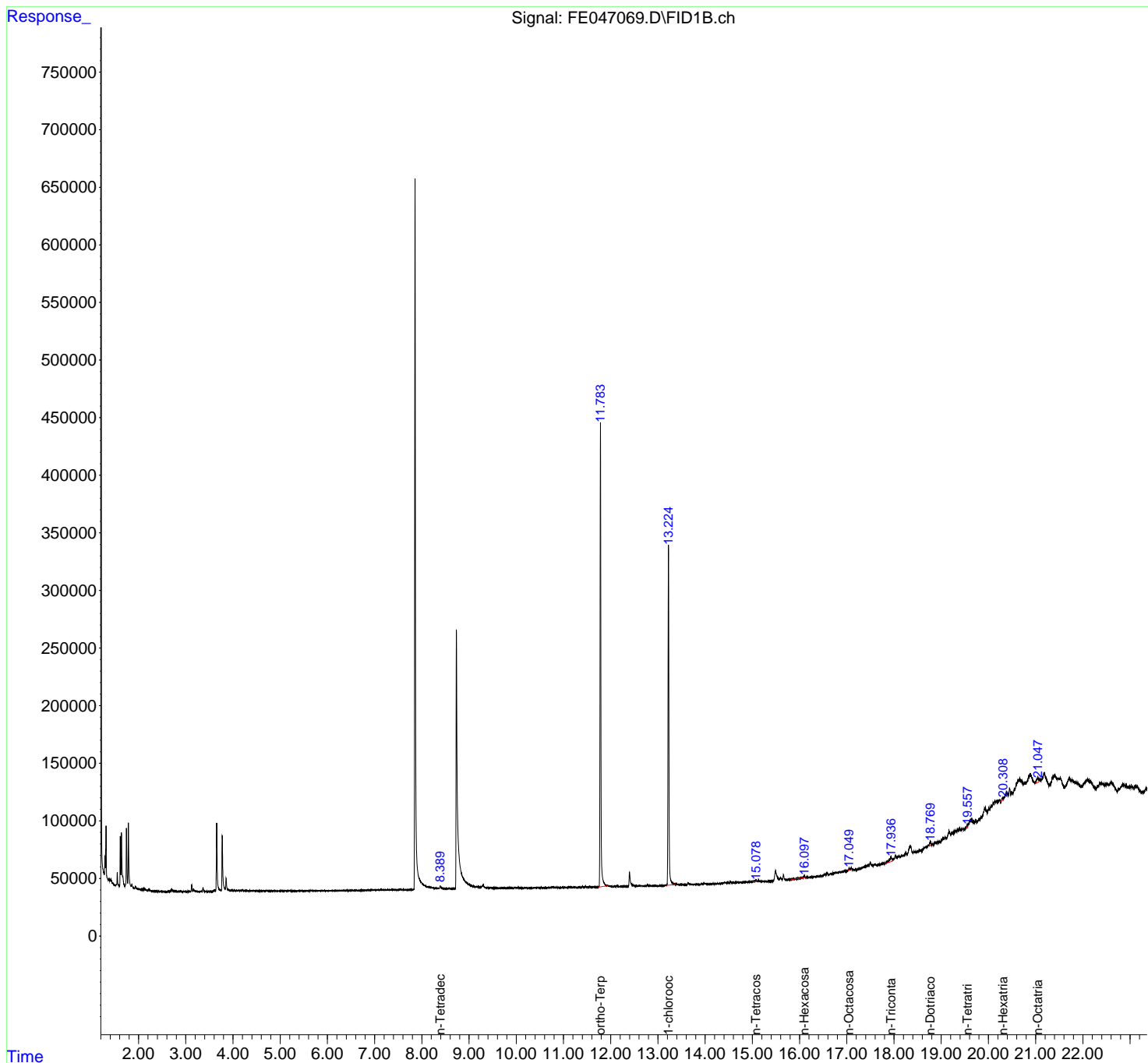
(f)=RT Delta > 1/2 Window

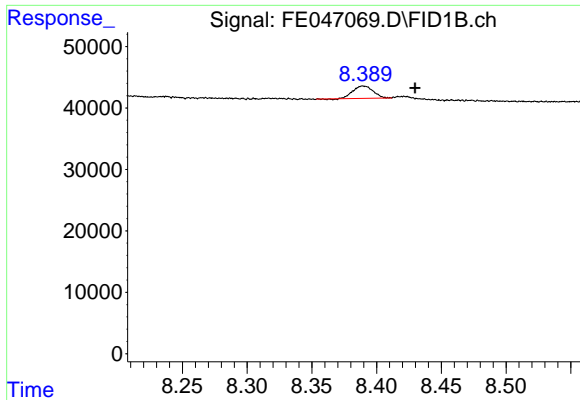
(m)=manual int.

Data Path : Z:\pestpcbsrv\HPCHEM1\FID_E\Data\FE030424AL\
 Data File : FE047069.D
 Signal(s) : FID1B.ch
 Acq On : 04 Mar 2024 16:09
 Operator : YP\AJ
 Sample : P1669-01
 Misc :
 ALS Vial : 13 Sample Multiplier: 1

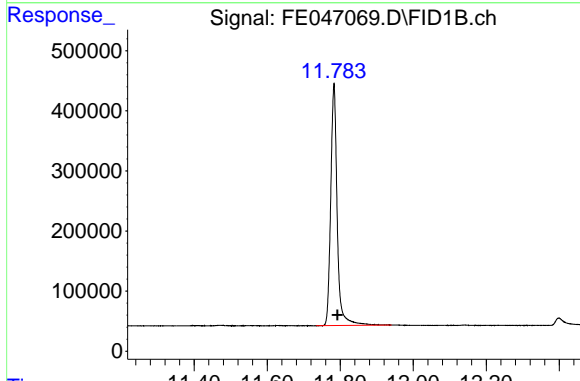
Integration File: autoint1.e
 Quant Time: Mar 05 00:35:28 2024
 Quant Method : Z:\pestpcbsrv\HPCHEM1\FID_E\methods\Aliphatic EPH 022024.M
 Quant Title : GC Extractables
 QLast Update : Tue Feb 20 11:04:00 2024
 Response via : Initial Calibration
 Integrator: ChemStation

Volume Inj. : 1 ul
 Signal Phase : Rxi-1ms
 Signal Info : 20M x 0.18mm x 0.18um

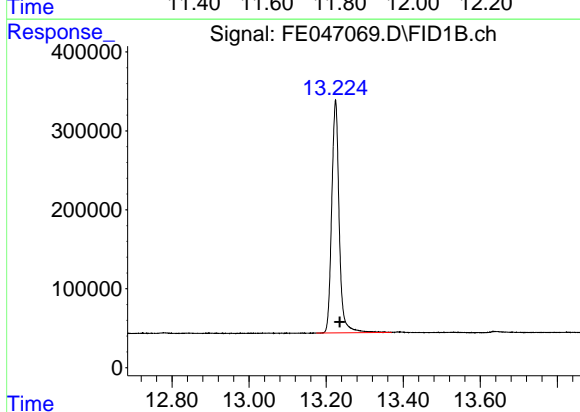




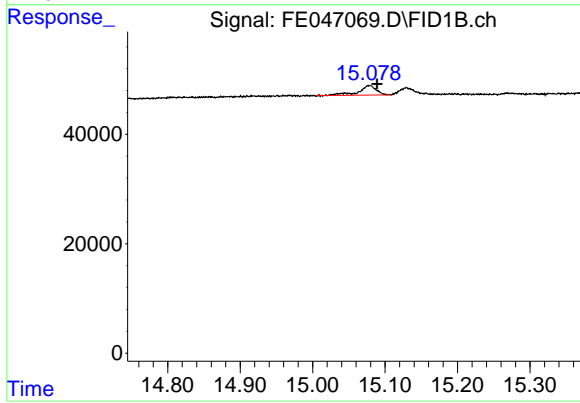
#6 n-Tetradecane (C14)
 R.T.: 8.390 min
 Delta R.T.: -0.040 min
 Response: 21568
 Conc: 0.14 ug/ml



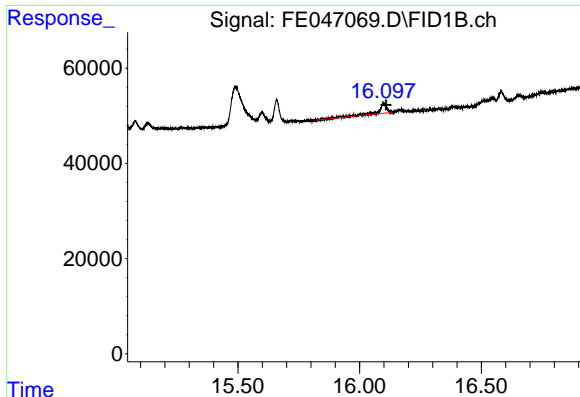
#9 ortho-Terphenyl (SURR)
 R.T.: 11.783 min
 Delta R.T.: -0.009 min
 Response: 4947740
 Conc: 30.11 ug/ml



#12 1-chlorooctadecane (SURR)
 R.T.: 13.225 min
 Delta R.T.: -0.010 min
 Response: 3982029
 Conc: 32.35 ug/ml

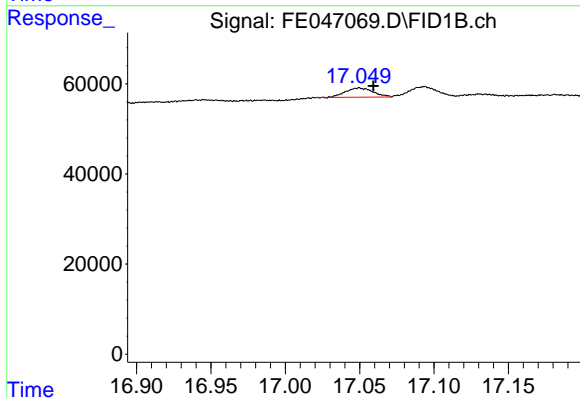


#14 n-Tetracosane (C24)
 R.T.: 15.079 min
 Delta R.T.: -0.010 min
 Response: 29809
 Conc: 0.21 ug/ml



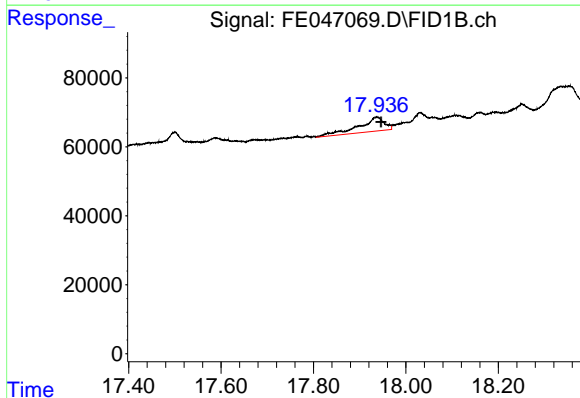
#15 n-Hexacosane (C26)

R.T.: 16.099 min
Delta R.T.: -0.010 min
Response: 48659
Conc: 0.35 ug/ml



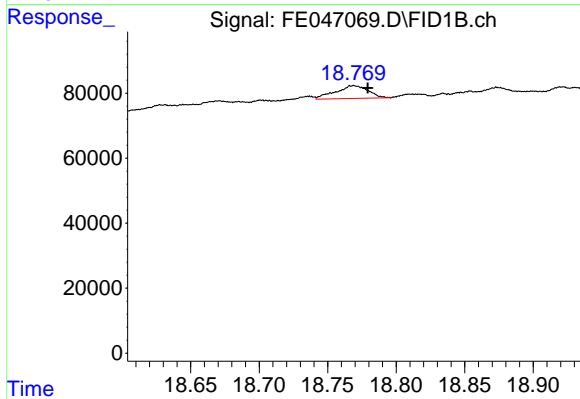
#16 n-Octacosane (C28)

R.T.: 17.050 min
Delta R.T.: -0.009 min
Response: 26297
Conc: 0.19 ug/ml



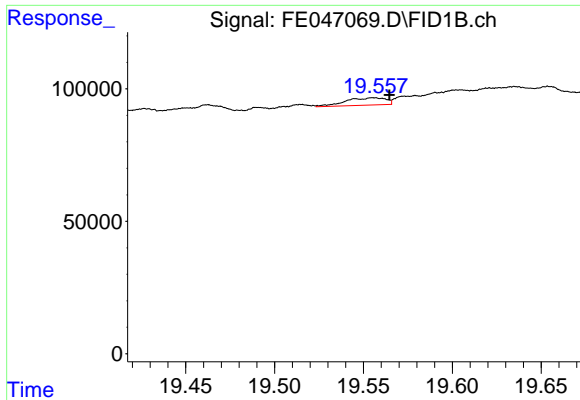
#17 n-Tricontane (C30)

R.T.: 17.937 min
Delta R.T.: -0.010 min
Response: 158093
Conc: 1.13 ug/ml



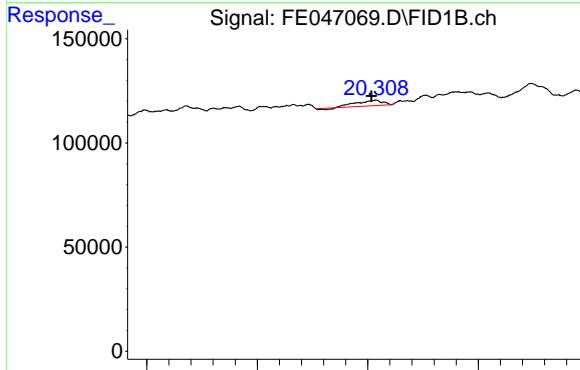
#18 n-Dotriacontane (C32)

R.T.: 18.769 min
Delta R.T.: -0.010 min
Response: 65433
Conc: 0.48 ug/ml



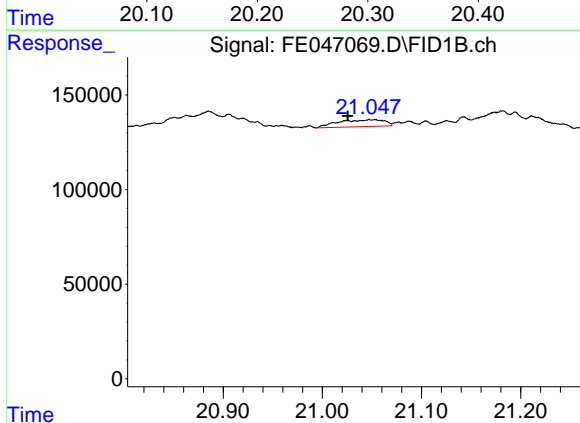
#19 n-Tetratriacontane (C34)

R.T.: 19.556 min
Delta R.T.: -0.009 min
Response: 44026
Conc: 0.33 ug/ml



#20 n-Hexatriacontane (C36)

R.T.: 20.307 min
Delta R.T.: 0.004 min
Response: 39194
Conc: 0.29 ug/ml



#21 n-Octatriacontane (C38)

R.T.: 21.047 min
Delta R.T.: 0.022 min
Response: 118037
Conc: 0.86 ug/ml