

Data Path : Z:\pestpcbsrv\HPCHEM1\FID_E\Data\FE030425AL\
 Data File : FE052593.D
 Signal(s) : FID1B.ch
 Acq On : 04 Mar 2025 17:49
 Operator : YP\AJ
 Sample : Q1480-04
 Misc :
 ALS Vial : 19 Sample Multiplier: 1

Instrument :
 FID_E
 ClientSampleId :
 TP-1-E4

Integration File: autoint1.e
 Quant Time: Mar 05 05:08:33 2025
 Quant Method : Z:\pestpcbsrv\HPCHEM1\FID_E\methods\Aliphatic EPH 030325.M
 Quant Title : GC Extractables
 QLast Update : Mon Mar 03 13:39:39 2025
 Response via : Initial Calibration
 Integrator: ChemStation

Volume Inj. : 1 ul
 Signal Phase : Rxi-1ms
 Signal Info : 20M x 0.18mm x 0.18um

Compound	R.T.	Response	Conc Units

System Monitoring Compounds			
9) S ortho-Terphenyl (SURR)	11.916	5063127	30.033 ug/ml
Spiked Amount	50.000	Recovery	= 60.07%
12) S 1-chlorooctadecane (S...	13.361	8887662	73.194 ug/ml
Spiked Amount	50.000	Recovery	= 146.39%
Target Compounds			
3) T A~Naphthalene (C11.7)	6.229	8963716	52.855 ug/ml
5) T A~2-methylnaphthalene...	7.330	4558772	28.131 ug/ml
6) T n-Tetradecane (C14)	8.506	301919	1.995 ug/ml
7) T n-Hexadecane (C16)	10.155	2145245	14.032 ug/ml
8) T n-Octadecane (C18)	11.599	244745	1.609 ug/ml
10) T n-Eicosane (C20)	12.906	2011849	13.858 ug/ml
11) T n-Heneicosane (C21)	13.541	2381862	16.735 ug/ml
13) T n-Docosane (C22)	14.108	2295146	16.128 ug/ml
14) T n-Tetracosane (C24)	15.222	15136594	105.770 ug/ml
15) T n-Hexacosane (C26)	16.258	1112235	7.822 ug/ml
16) T n-Octacosane (C28)	17.217	3540224	24.897 ug/ml
17) T n-Tricontane (C30)	18.070	1268061	8.585 ug/ml
18) T n-Dotriacontane (C32)	18.976f	358052	2.466 ug/ml
19) T n-Tetratriacontane (C34)	19.705	233651	1.734 ug/ml
20) T n-Hexatriacontane (C36)	20.438	63926	0.538 ug/ml

(f)=RT Delta > 1/2 Window

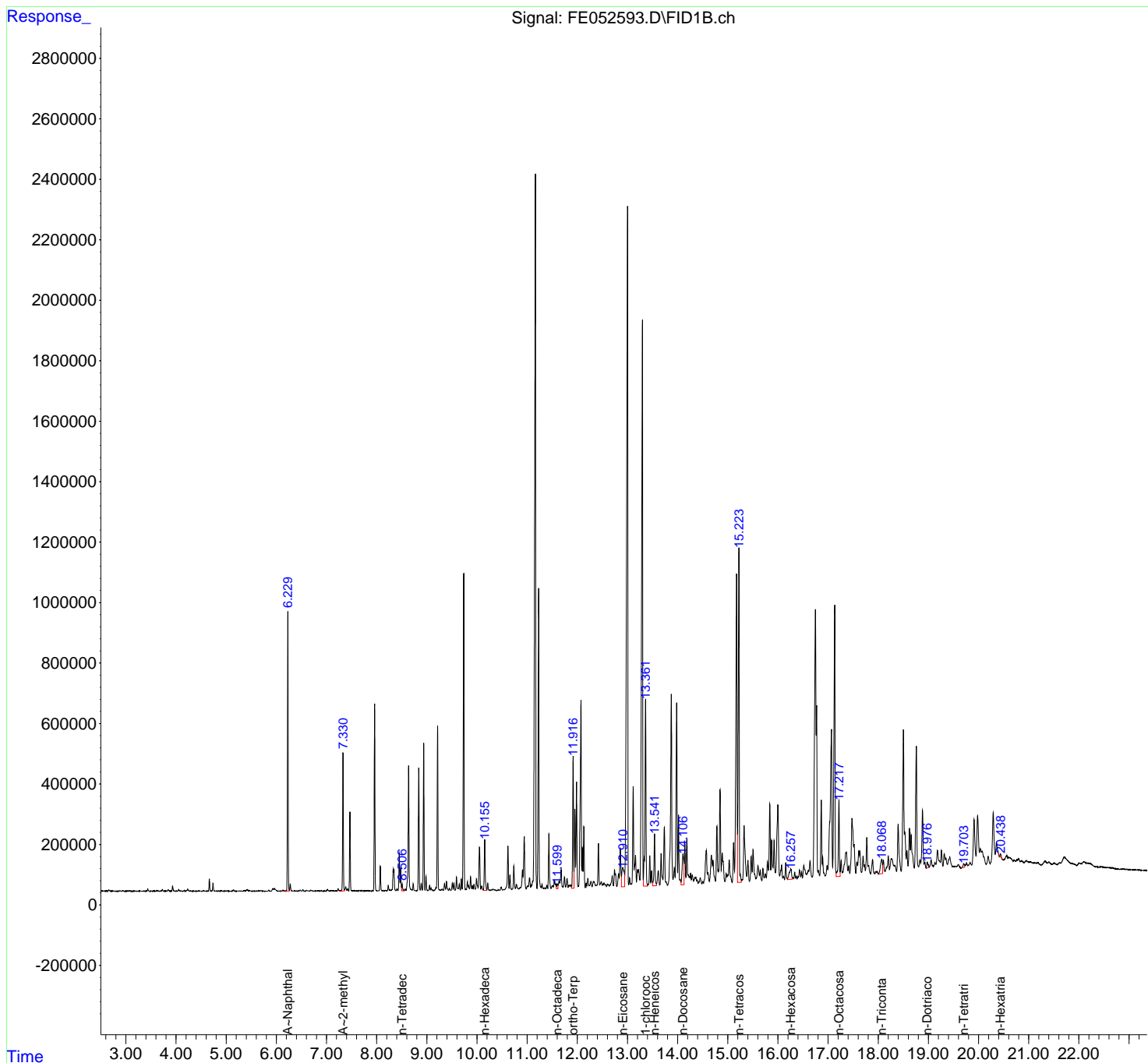
(m)=manual int.

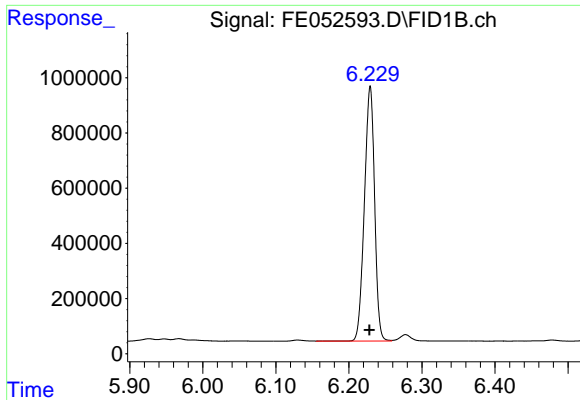
Data Path : Z:\pestpcbsrv\HPCHEM1\FID_E\Data\FE030425AL\
 Data File : FE052593.D
 Signal(s) : FID1B.ch
 Acq On : 04 Mar 2025 17:49
 Operator : YP\AJ
 Sample : Q1480-04
 Misc :
 ALS Vial : 19 Sample Multiplier: 1

Instrument :
 FID_E
 ClientSampleId :
 TP-1-E4

Integration File: autoint1.e
 Quant Time: Mar 05 05:08:33 2025
 Quant Method : Z:\pestpcbsrv\HPCHEM1\FID_E\methods\Aliphatic EPH 030325.M
 Quant Title : GC Extractables
 QLast Update : Mon Mar 03 13:39:39 2025
 Response via : Initial Calibration
 Integrator: ChemStation

Volume Inj. : 1 ul
 Signal Phase : Rxi-1ms
 Signal Info : 20M x 0.18mm x 0.18um

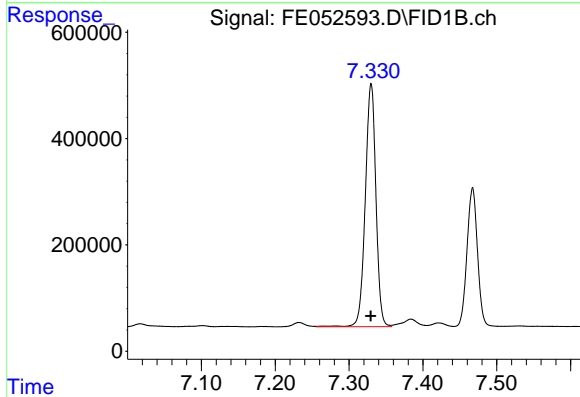




#3 A~Naphthalene (C11.7)

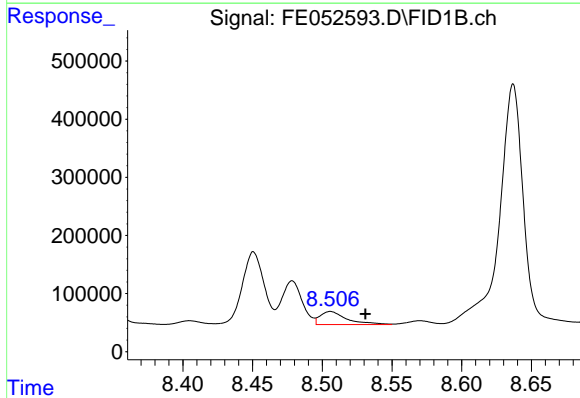
R.T.: 6.229 min
 Delta R.T.: 0.001 min
 Response: 8963716
 Conc: 52.85 ug/ml

Instrument :
 FID_E
 ClientSampleId :
 TP-1-E4



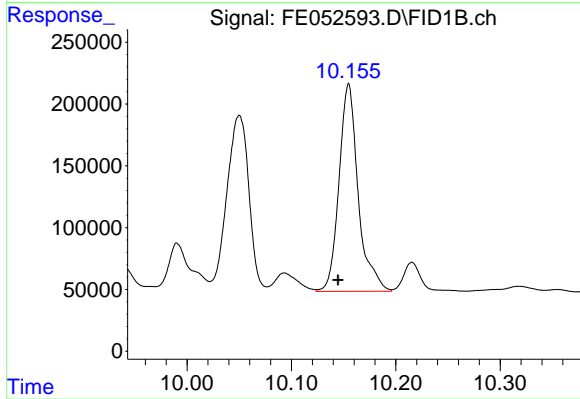
#5 A~2-methylnaphthalene (C12.89)

R.T.: 7.330 min
 Delta R.T.: 0.000 min
 Response: 4558772
 Conc: 28.13 ug/ml



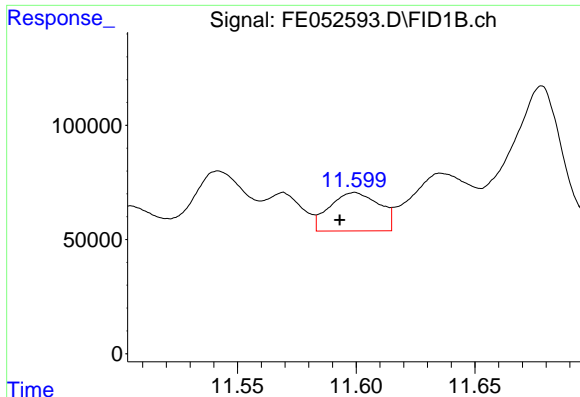
#6 n-Tetradecane (C14)

R.T.: 8.506 min
 Delta R.T.: -0.025 min
 Response: 301919
 Conc: 2.00 ug/ml



#7 n-Hexadecane (C16)

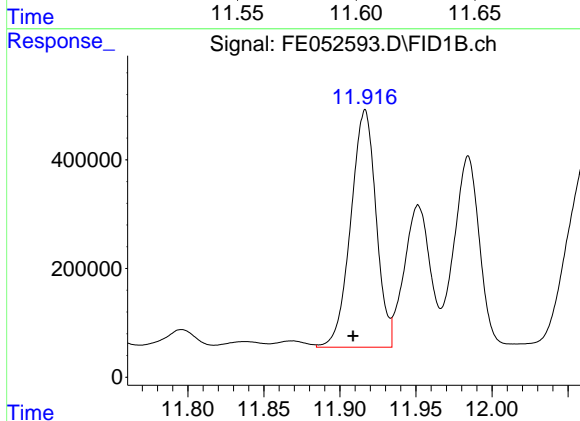
R.T.: 10.155 min
 Delta R.T.: 0.010 min
 Response: 2145245
 Conc: 14.03 ug/ml



#8 n-Octadecane (C18)

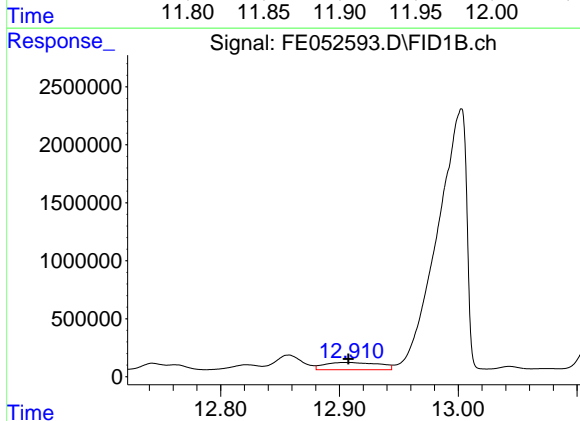
R.T.: 11.599 min
 Delta R.T.: 0.006 min
 Response: 244745
 Conc: 1.61 ug/ml

Instrument :
 FID_E
 ClientSampleId :
 TP-1-E4



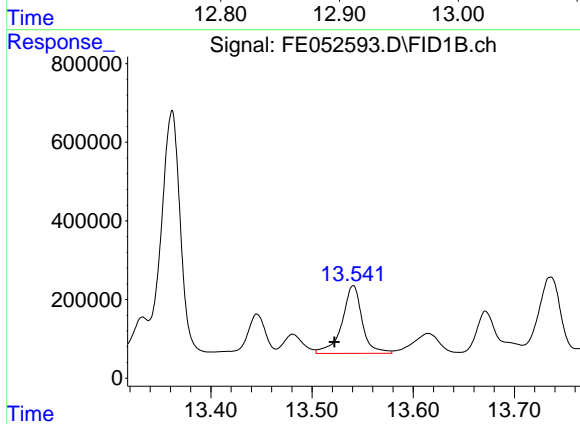
#9 ortho-Terphenyl (SURRE)

R.T.: 11.916 min
 Delta R.T.: 0.008 min
 Response: 5063127
 Conc: 30.03 ug/ml



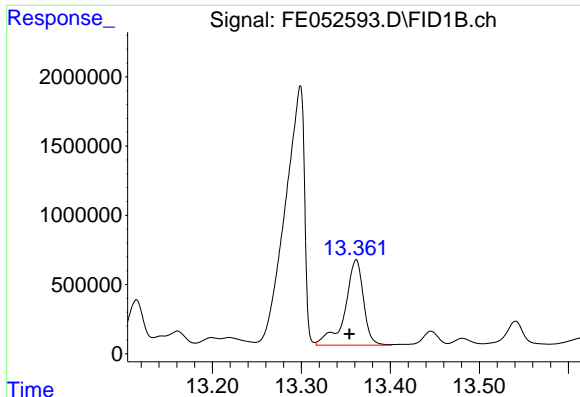
#10 n-Eicosane (C20)

R.T.: 12.906 min
 Delta R.T.: -0.002 min
 Response: 2011849
 Conc: 13.86 ug/ml



#11 n-Heneicosane (C21)

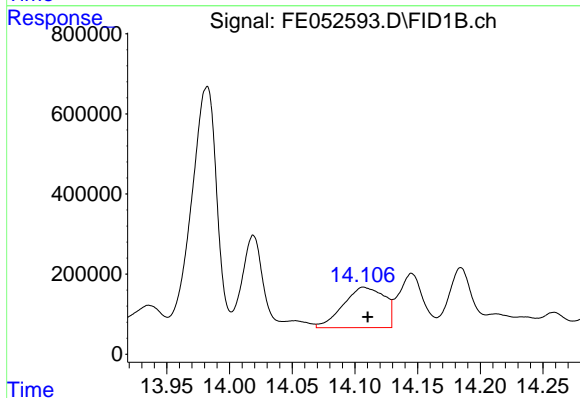
R.T.: 13.541 min
 Delta R.T.: 0.018 min
 Response: 2381862
 Conc: 16.73 ug/ml



#12 1-chlorooctadecane (SURR)

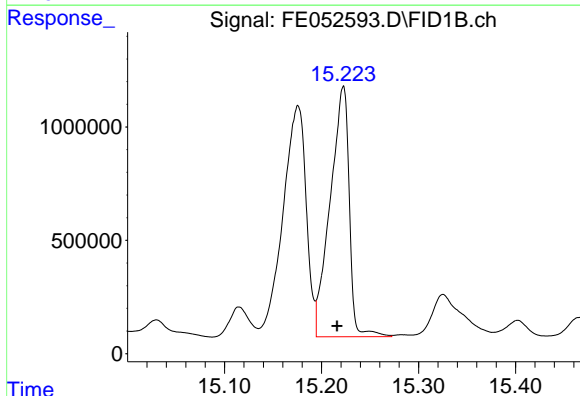
R.T.: 13.361 min
Delta R.T.: 0.007 min
Response: 8887662
Conc: 73.19 ug/ml

Instrument :
FID_E
ClientSampleId :
TP-1-E4



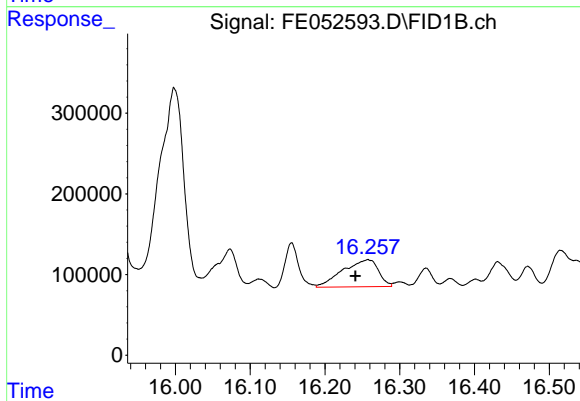
#13 n-Docosane (C22)

R.T.: 14.108 min
Delta R.T.: -0.002 min
Response: 2295146
Conc: 16.13 ug/ml



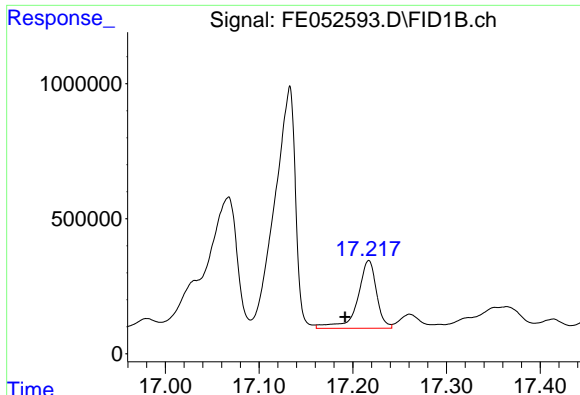
#14 n-Tetracosane (C24)

R.T.: 15.222 min
Delta R.T.: 0.006 min
Response: 15136594
Conc: 105.77 ug/ml



#15 n-Hexacosane (C26)

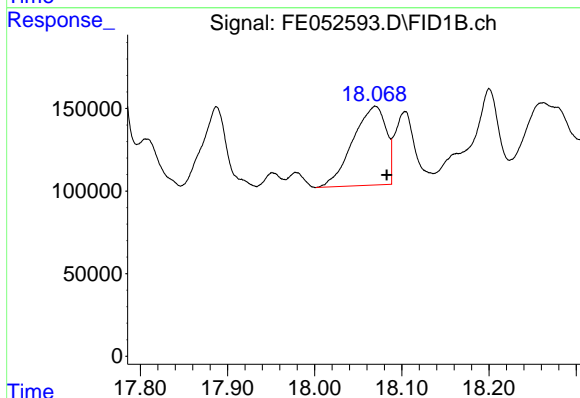
R.T.: 16.258 min
Delta R.T.: 0.017 min
Response: 1112235
Conc: 7.82 ug/ml



#16 n-Octacosane (C28)

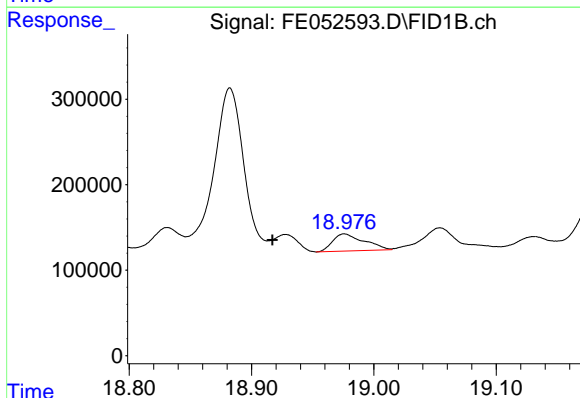
R.T.: 17.217 min
 Delta R.T.: 0.025 min
 Response: 3540224
 Conc: 24.90 ug/ml

Instrument :
 FID_E
 ClientSampleId :
 TP-1-E4



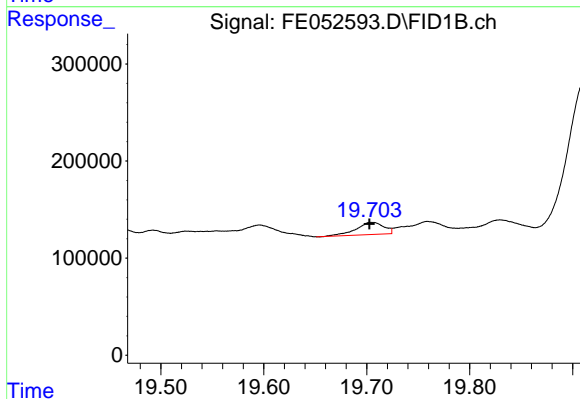
#17 n-Tricontane (C30)

R.T.: 18.070 min
 Delta R.T.: -0.013 min
 Response: 1268061
 Conc: 8.59 ug/ml



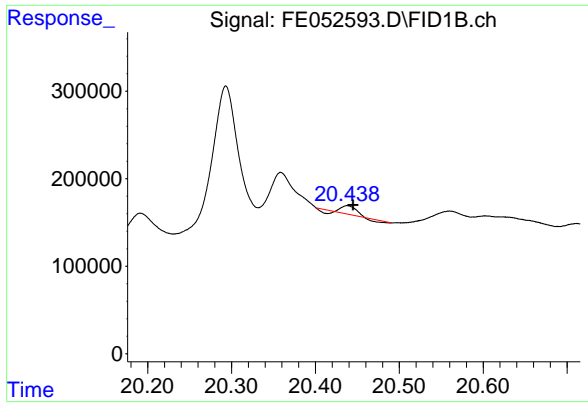
#18 n-Dotriacontane (C32)

R.T.: 18.976 min
 Delta R.T.: 0.059 min
 Response: 358052
 Conc: 2.47 ug/ml



#19 n-Tetratriacontane (C34)

R.T.: 19.705 min
 Delta R.T.: 0.003 min
 Response: 233651
 Conc: 1.73 ug/ml



#20 n-Hexatriacontane (C36)

R.T.: 20.438 min
Delta R.T.: -0.007 min
Response: 63926
Conc: 0.54 ug/ml

Instrument :
FID_E
ClientSampleId :
TP-1-E4