

Data Path : Z:\pestpcbsrv\HPCHEM1\FID_E\Data\FE030425AL\
 Data File : FE052591.D
 Signal(s) : FID1B.ch
 Acq On : 04 Mar 2025 16:49
 Operator : YP\AJ
 Sample : Q1480-02
 Misc :
 ALS Vial : 17 Sample Multiplier: 1

Instrument :
 FID_E
 ClientSampleId :
 TP-1-E2

Integration File: sample.E
 Quant Time: Mar 05 05:07:46 2025
 Quant Method : Z:\pestpcbsrv\HPCHEM1\FID_E\methods\Aliphatic EPH 030325.M
 Quant Title : GC Extractables
 QLast Update : Mon Mar 03 13:39:39 2025
 Response via : Initial Calibration
 Integrator: ChemStation

Volume Inj. : 1 ul
 Signal Phase : Rxi-1ms
 Signal Info : 20M x 0.18mm x 0.18um

Compound	R.T.	Response	Conc Units
System Monitoring Compounds			
9) S ortho-Terphenyl (SURR)	11.913	4762622	28.250 ug/ml
Spiked Amount	50.000	Recovery	= 56.50%
12) S 1-chlorooctadecane (S...	13.357	5501144	45.304 ug/ml
Spiked Amount	50.000	Recovery	= 90.61%

Target Compounds

(f)=RT Delta > 1/2 Window

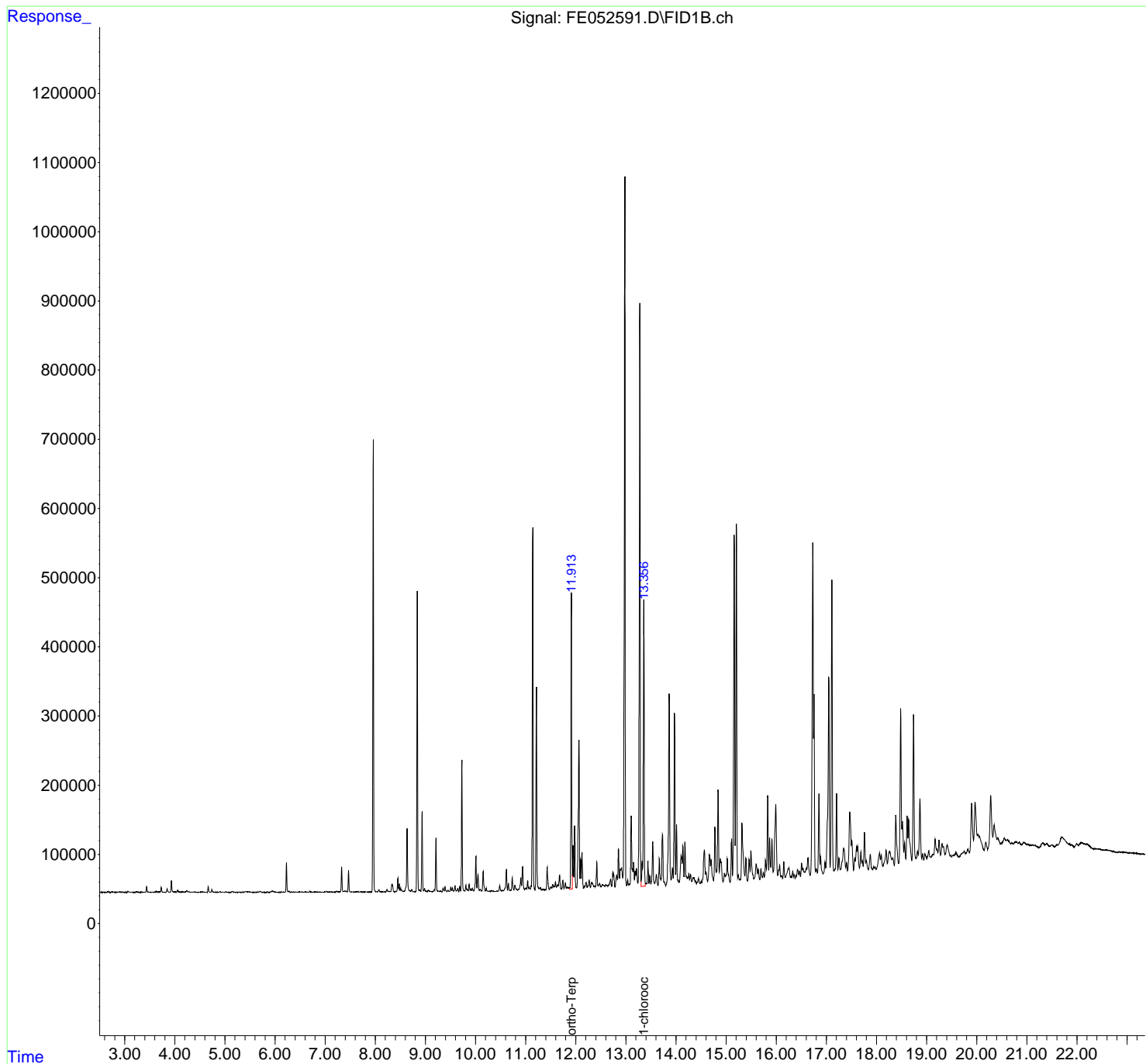
(m)=manual int.

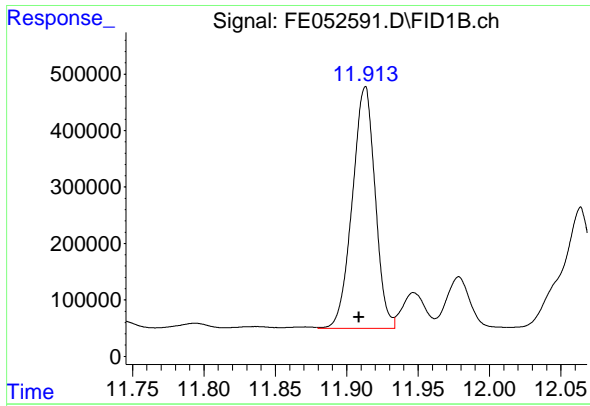
Data Path : Z:\pestpcbsrv\HPCHEM1\FID_E\Data\FE030425AL\
 Data File : FE052591.D
 Signal(s) : FID1B.ch
 Acq On : 04 Mar 2025 16:49
 Operator : YP\AJ
 Sample : Q1480-02
 Misc :
 ALS Vial : 17 Sample Multiplier: 1

Instrument :
 FID_E
 ClientSampleId :
 TP-1-E2

Integration File: sample.E
 Quant Time: Mar 05 05:07:46 2025
 Quant Method : Z:\pestpcbsrv\HPCHEM1\FID_E\methods\Aliphatic EPH 030325.M
 Quant Title : GC Extractables
 QLast Update : Mon Mar 03 13:39:39 2025
 Response via : Initial Calibration
 Integrator: ChemStation

Volume Inj. : 1 ul
 Signal Phase : Rxi-1ms
 Signal Info : 20M x 0.18mm x 0.18um

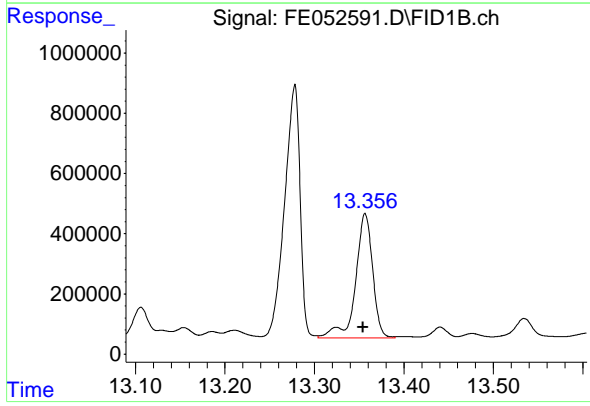




#9 ortho-Terphenyl (SURRE)

R.T.: 11.913 min
Delta R.T.: 0.004 min
Response: 4762622
Conc: 28.25 ug/ml

Instrument :
FID_E
ClientSampleId :
TP-1-E2



#12 1-chlorooctadecane (SURRE)

R.T.: 13.357 min
Delta R.T.: 0.003 min
Response: 5501144
Conc: 45.30 ug/ml