

Data Path : Z:\pestpcbsrv\HPCHEM1\FID_E\Data\FE030525AL\
 Data File : FE052643.D
 Signal(s) : FID1B.ch
 Acq On : 05 Mar 2025 21:28
 Operator : YP\AJ
 Sample : Q1484-05
 Misc :
 ALS Vial : 24 Sample Multiplier: 1

Instrument :
 FID_E
 ClientSampleId :

Integration File: autoint1.e
 Quant Time: Mar 06 01:53:37 2025
 Quant Method : Z:\pestpcbsrv\HPCHEM1\FID_E\methods\Aliphatic EPH 030325.M
 Quant Title : GC Extractables
 QLast Update : Mon Mar 03 13:39:39 2025
 Response via : Initial Calibration
 Integrator: ChemStation

Volume Inj. : 1 ul
 Signal Phase : Rxi-1ms
 Signal Info : 20M x 0.18mm x 0.18um

| Compound | R.T. | Response | Conc Units |
|--------------------------------|---------|----------|--------------|
| ----- | | | |
| System Monitoring Compounds | | | |
| 9) S ortho-Terphenyl (SURR) | 11.916 | 3653831 | 21.673 ug/ml |
| Spiked Amount | 50.000 | Recovery | = 43.35% |
| 12) S 1-chlorooctadecane (S... | 13.362 | 2831258 | 23.317 ug/ml |
| Spiked Amount | 50.000 | Recovery | = 46.63% |
| Target Compounds | | | |
| 10) T n-Eicosane (C20) | 12.974f | 180695 | 1.245 ug/ml |
| 14) T n-Tetracosane (C24) | 15.202 | 117968 | 0.824 ug/ml |
| 17) T n-Tricontane (C30) | 18.095 | 229566 | 1.554 ug/ml |
| 22) T n-Tetracontane (C40) | 22.132 | 553808 | 5.122 ug/ml |
| ----- | | | |

(f)=RT Delta > 1/2 Window

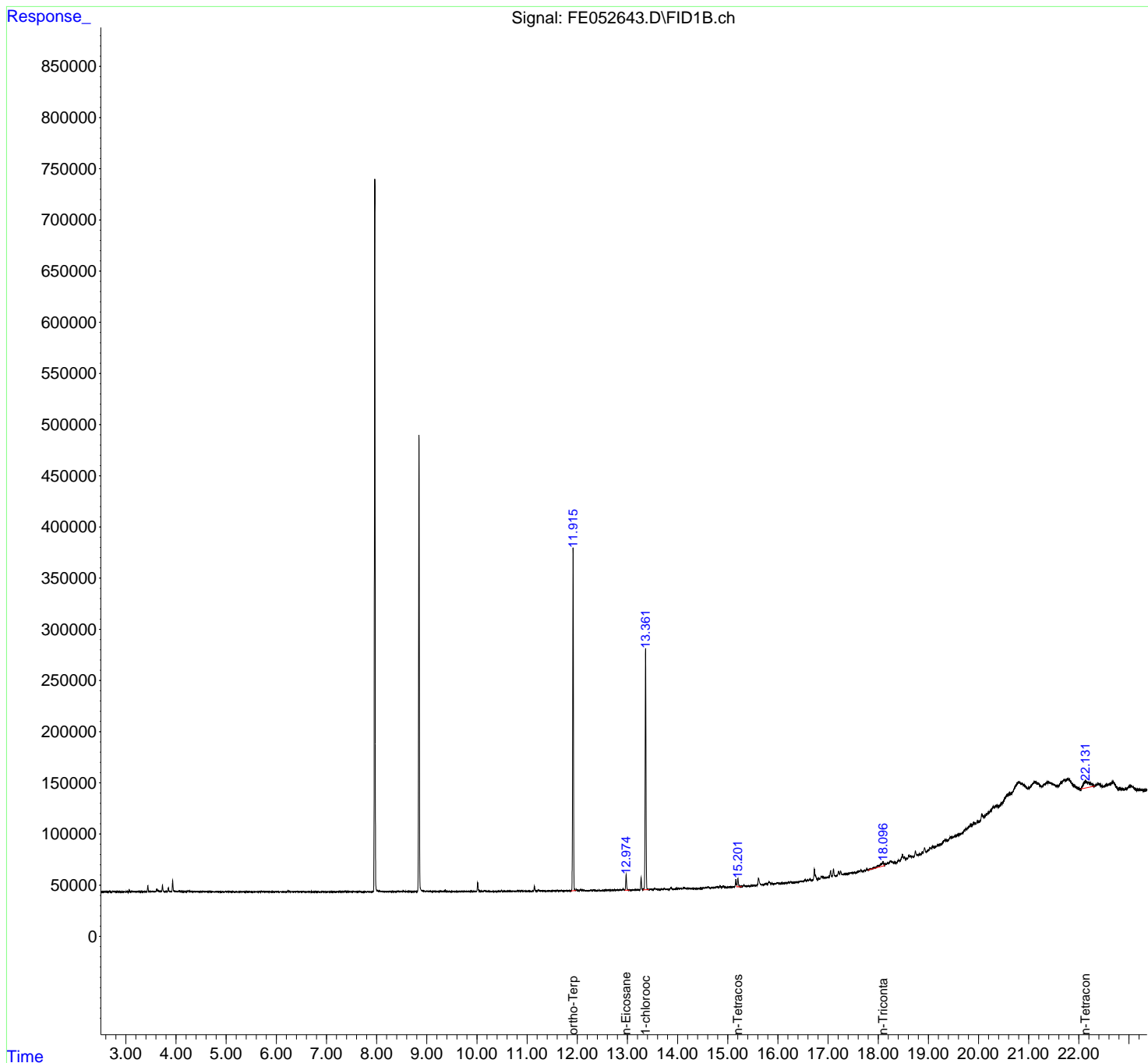
(m)=manual int.

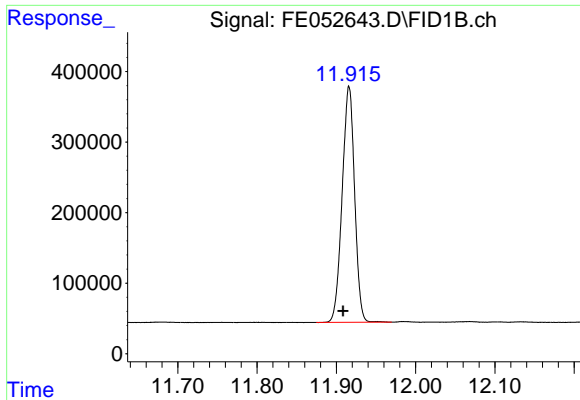
Data Path : Z:\pestpcbsrv\HPCHEM1\FID_E\Data\FE030525AL\
Data File : FE052643.D
Signal(s) : FID1B.ch
Acq On : 05 Mar 2025 21:28
Operator : YP\AJ
Sample : Q1484-05
Misc :
ALS Vial : 24 Sample Multiplier: 1

Instrument :
FID_E
ClientSampleId :

Integration File: autoint1.e
Quant Time: Mar 06 01:53:37 2025
Quant Method : Z:\pestpcbsrv\HPCHEM1\FID_E\methods\Aliphatic EPH 030325.M
Quant Title : GC Extractables
QLast Update : Mon Mar 03 13:39:39 2025
Response via : Initial Calibration
Integrator: ChemStation

Volume Inj. : 1 ul
Signal Phase : Rxi-1ms
Signal Info : 20M x 0.18mm x 0.18um

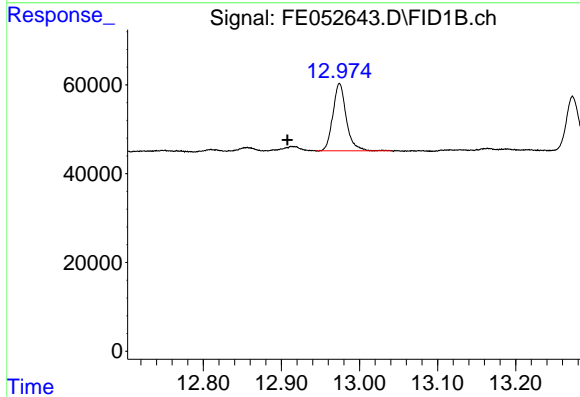




#9 ortho-Terphenyl (SURR)

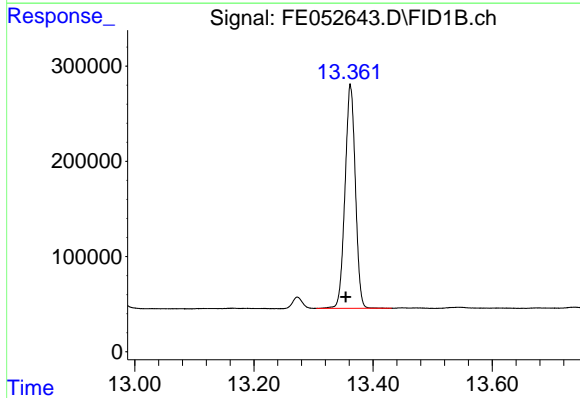
R.T.: 11.916 min
 Delta R.T.: 0.007 min
 Response: 3653831
 Conc: 21.67 ug/ml

Instrument :
 FID_E
 ClientSampleId :



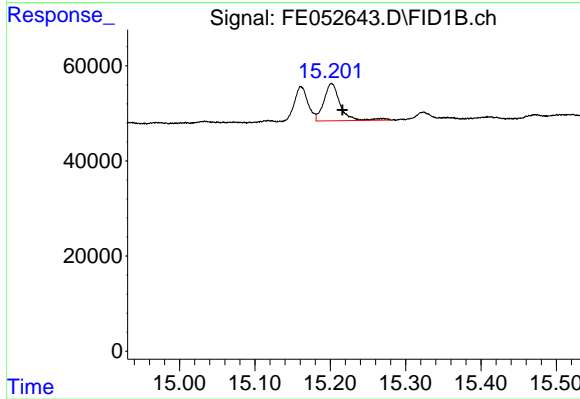
#10 n-Eicosane (C20)

R.T.: 12.974 min
 Delta R.T.: 0.067 min
 Response: 180695
 Conc: 1.24 ug/ml



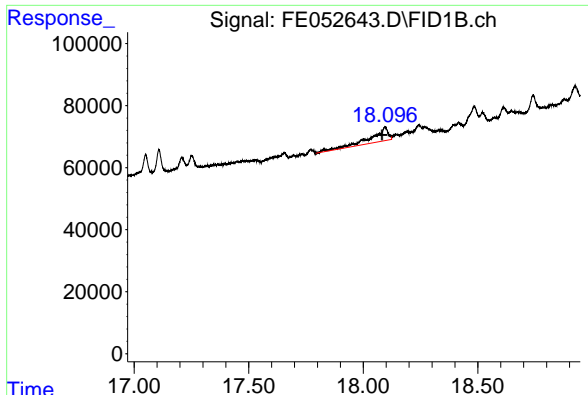
#12 1-chlorooctadecane (SURR)

R.T.: 13.362 min
 Delta R.T.: 0.008 min
 Response: 2831258
 Conc: 23.32 ug/ml



#14 n-Tetracosane (C24)

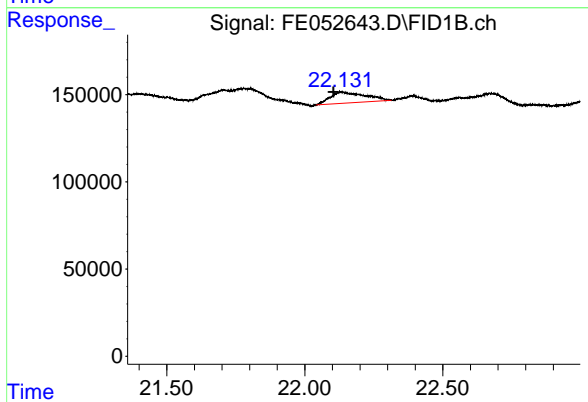
R.T.: 15.202 min
 Delta R.T.: -0.014 min
 Response: 117968
 Conc: 0.82 ug/ml



#17 n-Tricontane (C30)

R.T.: 18.095 min
Delta R.T.: 0.012 min
Response: 229566
Conc: 1.55 ug/ml

Instrument :
FID_E
ClientSampleId :



#22 n-Tetracontane (C40)

R.T.: 22.132 min
Delta R.T.: 0.028 min
Response: 553808
Conc: 5.12 ug/ml