

Data Path : Z:\pestpcbsrv\HPCHEM1\FID_E\Data\FE030722AL\
Data File : FE035246.D
Signal(s) : FID1B.CH
Acq On : 08 Mar 2022 9:38
Operator : YP\AJ
Sample : I.BLK
Misc :
ALS Vial : 1 Sample Multiplier: 1

Instrument :
FID_E
ClientSampleId :
I.BLK

Integration File: sample.E
Quant Time: Mar 08 10:13:15 2022
Quant Method : Z:\pestpcbsrv\HPCHEM1\FID_E\methods\Aliphatic EPH 022822.M
Quant Title : GC Extractables
QLast Update : Tue Mar 01 02:07:56 2022
Response via : Initial Calibration
Integrator: ChemStation 6890 Scale Mode: Large solvent peaks clipped

Volume Inj. : 1 ul
Signal Phase : Rxi-1ms
Signal Info : 20M x 0.18mm x 0.18um

Compound	R.T.	Response	Conc Units

System Monitoring Compounds			
Target Compounds			

(f)=RT Delta > 1/2 Window

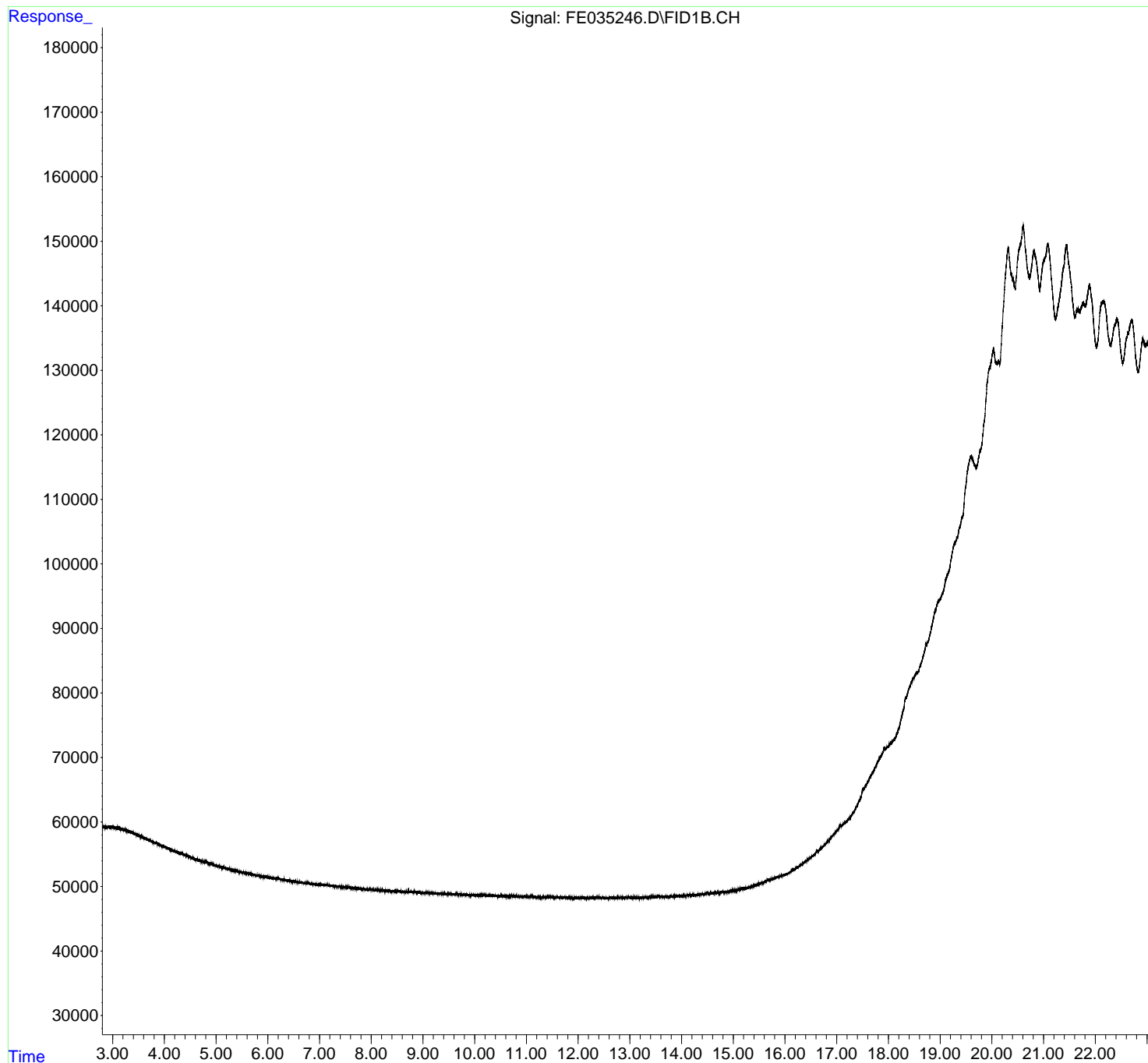
(m)=manual int.

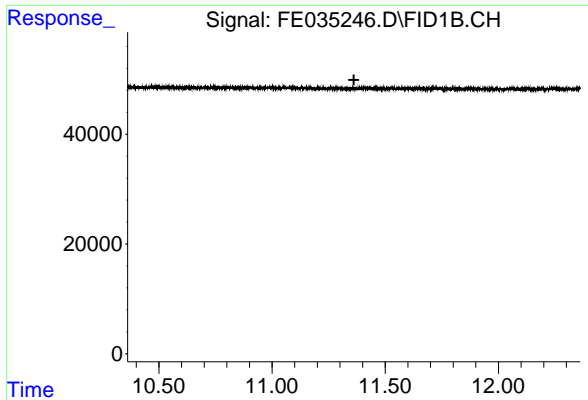
Data Path : Z:\pestpcbsrv\HPCHEM1\FID_E\Data\FE030722AL\
Data File : FE035246.D
Signal(s) : FID1B.CH
Acq On : 08 Mar 2022 9:38
Operator : YP\AJ
Sample : I.BLK
Misc :
ALS Vial : 1 Sample Multiplier: 1

Instrument :
FID_E
ClientSampleId :
I.BLK

Integration File: sample.E
Quant Time: Mar 08 10:13:15 2022
Quant Method : Z:\pestpcbsrv\HPCHEM1\FID_E\methods\Aliphatic EPH 022822.M
Quant Title : GC Extractables
QLast Update : Tue Mar 01 02:07:56 2022
Response via : Initial Calibration
Integrator: ChemStation 6890 Scale Mode: Large solvent peaks clipped

Volume Inj. : 1 ul
Signal Phase : Rxi-1ms
Signal Info : 20M x 0.18mm x 0.18um

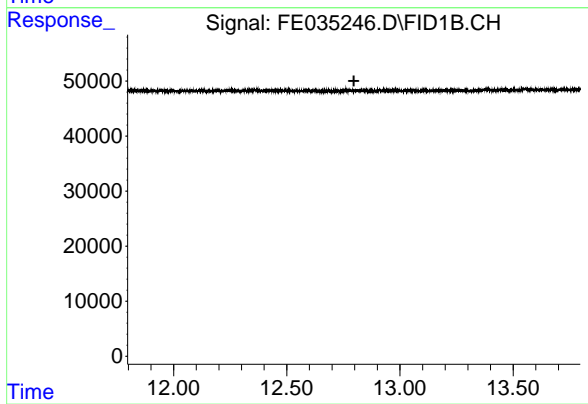




#9 ortho-Terphenyl (SURR)

R.T.: 0.000 min
 Exp R.T. : 11.362 min
 Response: 0
 Conc: N.D.

Instrument :
 FID_E
 ClientSampleId :
 I.BLK



#12 1-chlorooctadecane (SURR)

R.T.: 0.000 min
 Exp R.T. : 12.797 min
 Response: 0
 Conc: N.D.