

Data Path : Z:\pestpcbsrv\HPCHEM1\FID_E\Data\FE030724AL\
 Data File : FE047133.D
 Signal(s) : FID1B.ch
 Acq On : 07 Mar 2024 10:45
 Operator : YP\AJ
 Sample : P1684-02DL 5X
 Misc :
 ALS Vial : 9 Sample Multiplier: 1

Integration File: autoint1.e
 Quant Time: Mar 08 00:24:06 2024
 Quant Method : Z:\pestpcbsrv\HPCHEM1\FID_E\methods\Aliphatic EPH 022024.M
 Quant Title : GC Extractables
 QLast Update : Tue Feb 20 11:04:00 2024
 Response via : Initial Calibration
 Integrator: ChemStation

Volume Inj. : 1 ul
 Signal Phase : Rxi-1ms
 Signal Info : 20M x 0.18mm x 0.18um

Compound	R.T.	Response	Conc Units

System Monitoring Compounds			
9) S ortho-Terphenyl (SURR)	11.781	1075677	6.547 ug/ml
Spiked Amount	50.000	Recovery =	13.09%
12) S 1-chlorooctadecane (S...	13.219	1632439	13.261 ug/ml
Spiked Amount	50.000	Recovery =	26.52%
Target Compounds			
4) T n-Dodecane (C12)	6.595	56482	0.363 ug/ml
5) T A~2-methylnaphthalene...	7.270	18803	0.131 ug/ml
6) T n-Tetradecane (C14)	8.418	342721	2.223 ug/ml
7) T n-Hexadecane (C16)	10.026	510863	3.220 ug/ml
8) T n-Octadecane (C18)	11.468	493365	3.095 ug/ml
10) T n-Eicosane (C20)	12.778	321373	2.123 ug/ml
11) T n-Heneicosane (C21)	13.389	236595	1.598 ug/ml
13) T n-Docosane (C22)	13.974	162586	1.117 ug/ml
14) T n-Tetracosane (C24)	15.078	64161	0.449 ug/ml
15) T n-Hexacosane (C26)	16.100	77741	0.556 ug/ml
16) T n-Octacosane (C28)	17.055	53045	0.389 ug/ml
17) T n-Tricontane (C30)	17.935	145851	1.045 ug/ml
18) T n-Dotriacontane (C32)	18.771	78694	0.572 ug/ml
19) T n-Tetratriacontane (C34)	19.565	96225	0.716 ug/ml
20) T n-Hexatriacontane (C36)	20.301	87994	0.661 ug/ml
21) T n-Octatriacontane (C38)	21.014	34660	0.252 ug/ml

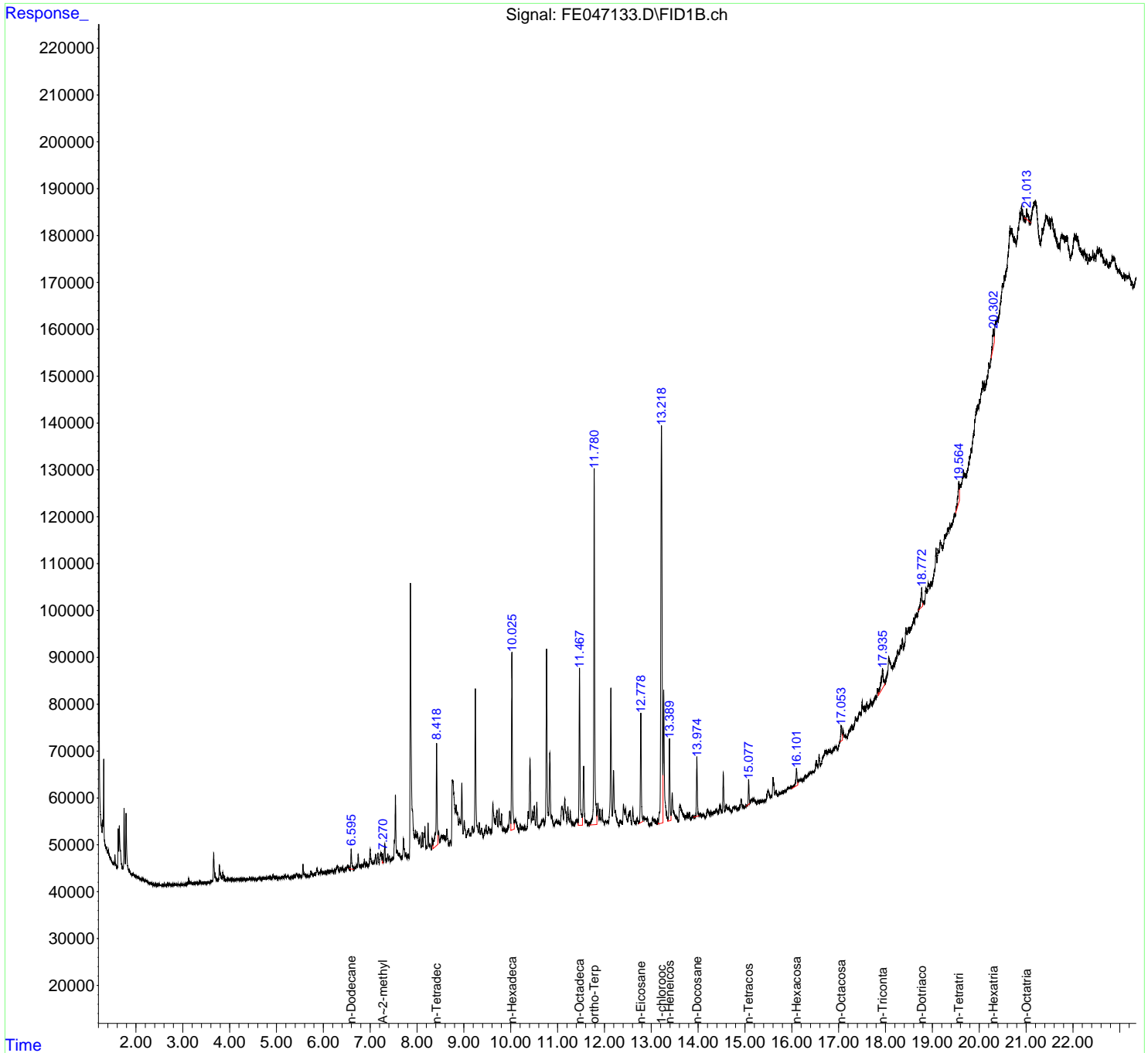
(f)=RT Delta > 1/2 Window

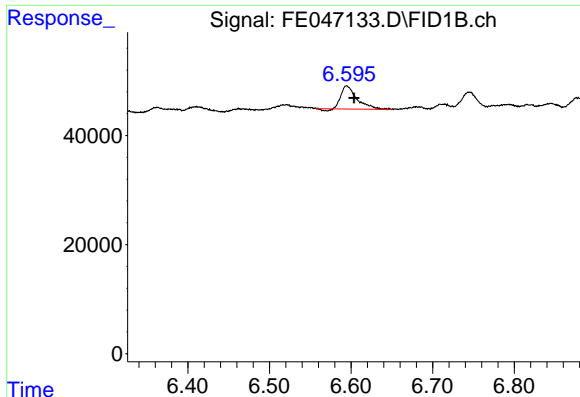
(m)=manual int.

Data Path : Z:\pestpcbsrv\HPCHEM1\FID_E\Data\FE030724AL\
 Data File : FE047133.D
 Signal(s) : FID1B.ch
 Acq On : 07 Mar 2024 10:45
 Operator : YP\AJ
 Sample : P1684-02DL 5X
 Misc :
 ALS Vial : 9 Sample Multiplier: 1

Integration File: autoint1.e
 Quant Time: Mar 08 00:24:06 2024
 Quant Method : Z:\pestpcbsrv\HPCHEM1\FID_E\methods\Aliphatic EPH 022024.M
 Quant Title : GC Extractables
 QLast Update : Tue Feb 20 11:04:00 2024
 Response via : Initial Calibration
 Integrator: ChemStation

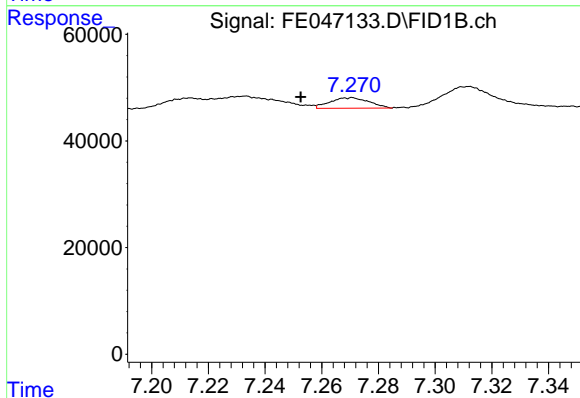
Volume Inj. : 1 ul
 Signal Phase : Rxi-1ms
 Signal Info : 20M x 0.18mm x 0.18um





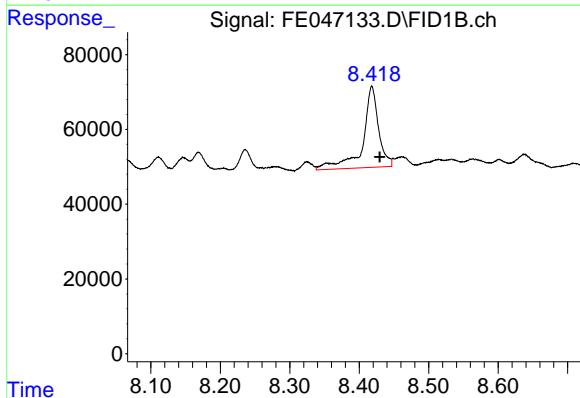
#4 n-Dodecane (C12)

R.T.: 6.595 min
 Delta R.T.: -0.009 min
 Response: 56482
 Conc: 0.36 ug/ml



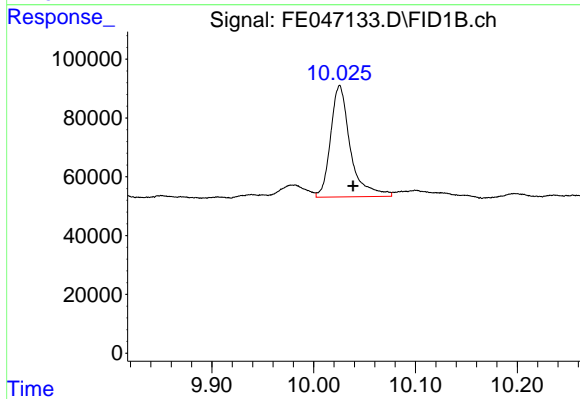
#5 A~2-methylnaphthalene (C12.89)

R.T.: 7.270 min
 Delta R.T.: 0.018 min
 Response: 18803
 Conc: 0.13 ug/ml



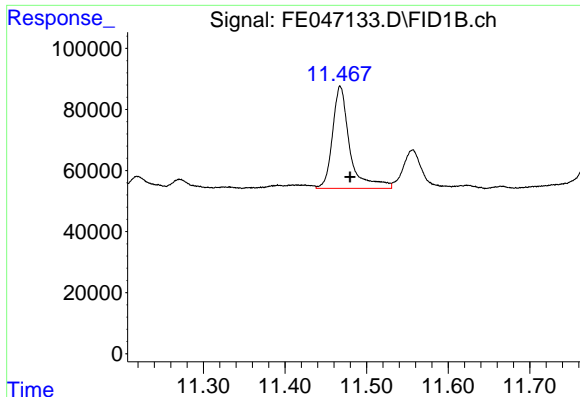
#6 n-Tetradecane (C14)

R.T.: 8.418 min
 Delta R.T.: -0.011 min
 Response: 342721
 Conc: 2.22 ug/ml



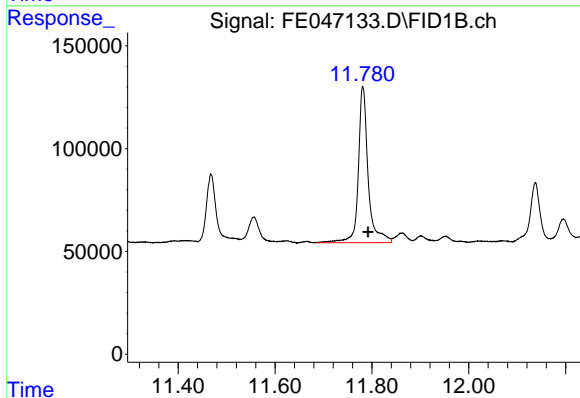
#7 n-Hexadecane (C16)

R.T.: 10.026 min
 Delta R.T.: -0.013 min
 Response: 510863
 Conc: 3.22 ug/ml



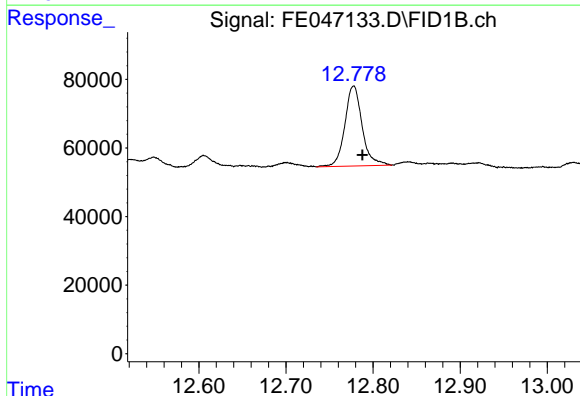
#8 n-Octadecane (C18)

R.T.: 11.468 min
Delta R.T.: -0.012 min
Response: 493365
Conc: 3.09 ug/ml



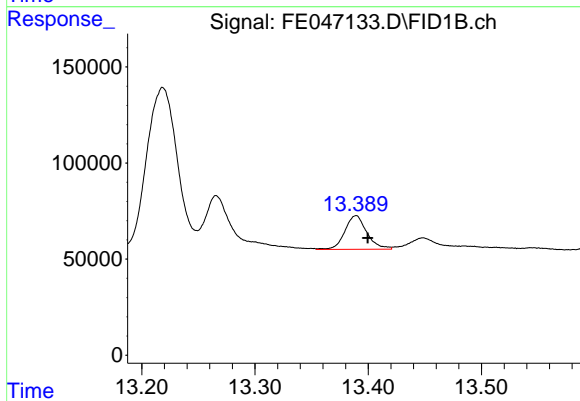
#9 ortho-Terphenyl (SURR)

R.T.: 11.781 min
Delta R.T.: -0.011 min
Response: 1075677
Conc: 6.55 ug/ml



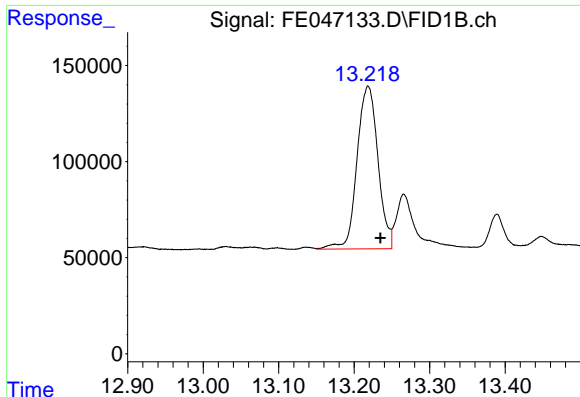
#10 n-Eicosane (C20)

R.T.: 12.778 min
Delta R.T.: -0.010 min
Response: 321373
Conc: 2.12 ug/ml



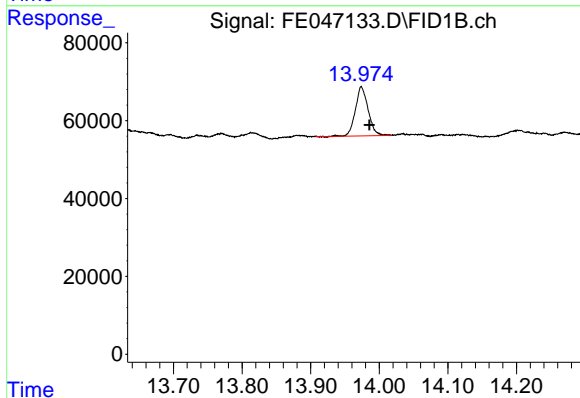
#11 n-Heneicosane (C21)

R.T.: 13.389 min
Delta R.T.: -0.010 min
Response: 236595
Conc: 1.60 ug/ml



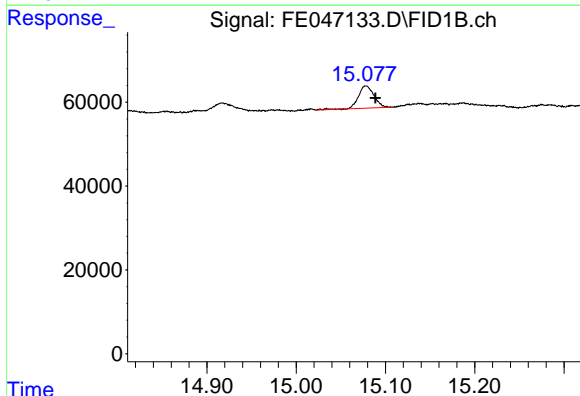
#12 1-chlorooctadecane (SURR)

R.T.: 13.219 min
Delta R.T.: -0.016 min
Response: 1632439
Conc: 13.26 ug/ml



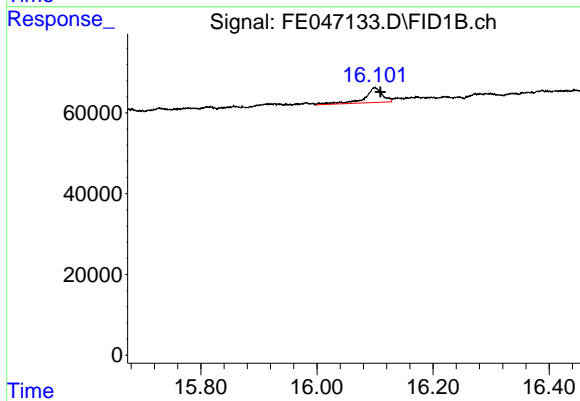
#13 n-Docosane (C22)

R.T.: 13.974 min
Delta R.T.: -0.012 min
Response: 162586
Conc: 1.12 ug/ml



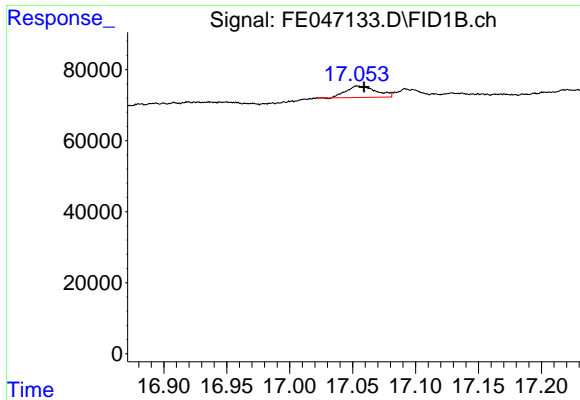
#14 n-Tetracosane (C24)

R.T.: 15.078 min
Delta R.T.: -0.010 min
Response: 64161
Conc: 0.45 ug/ml

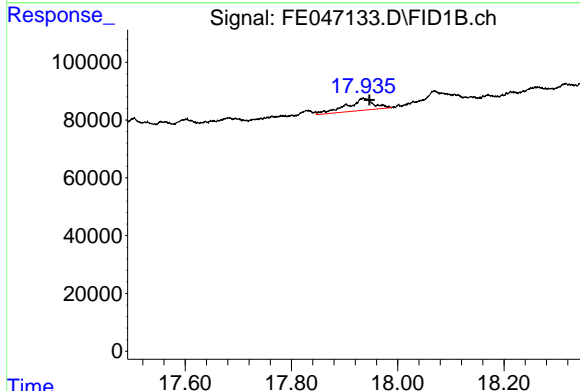


#15 n-Hexacosane (C26)

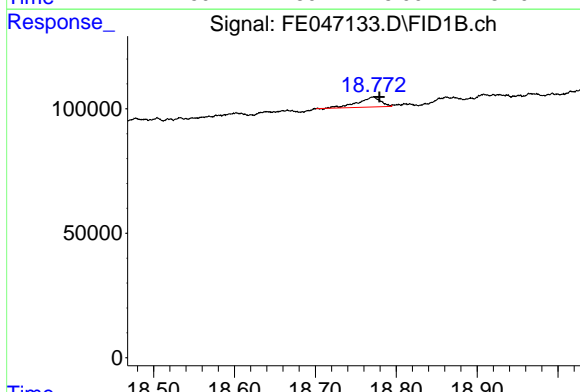
R.T.: 16.100 min
Delta R.T.: -0.010 min
Response: 77741
Conc: 0.56 ug/ml



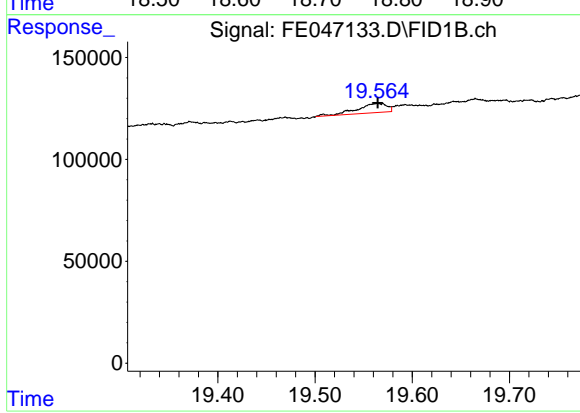
#16 n-Octacosane (C28)
R.T.: 17.055 min
Delta R.T.: -0.004 min
Response: 53045
Conc: 0.39 ug/ml



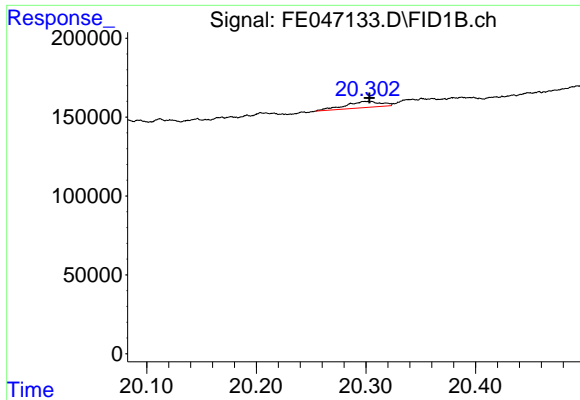
#17 n-Tricontane (C30)
R.T.: 17.935 min
Delta R.T.: -0.012 min
Response: 145851
Conc: 1.05 ug/ml



#18 n-Dotriacontane (C32)
R.T.: 18.771 min
Delta R.T.: -0.008 min
Response: 78694
Conc: 0.57 ug/ml

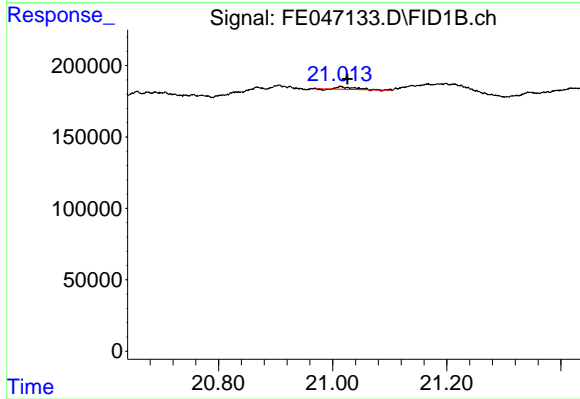


#19 n-Tetratriacontane (C34)
R.T.: 19.565 min
Delta R.T.: 0.000 min
Response: 96225
Conc: 0.72 ug/ml



#20 n-Hexatriacontane (C36)

R.T.: 20.301 min
Delta R.T.: -0.002 min
Response: 87994
Conc: 0.66 ug/ml



#21 n-Octatriacontane (C38)

R.T.: 21.014 min
Delta R.T.: -0.012 min
Response: 34660
Conc: 0.25 ug/ml