

Data Path : Z:\pestpcbsrv\HPCHEM1\FID_E\Data\FE031025AL\
 Data File : FE052698.D
 Signal(s) : FID1B.ch
 Acq On : 10 Mar 2025 14:01
 Operator : YP\AJ
 Sample : PB167046BL
 Misc :
 ALS Vial : 11 Sample Multiplier: 1

Instrument :
 FID_E
 ClientSampleId :

Integration File: autoint1.e
 Quant Time: Mar 11 05:17:57 2025
 Quant Method : Z:\pestpcbsrv\HPCHEM1\FID_E\methods\Aliphatic EPH 030325.M
 Quant Title : GC Extractables
 QLast Update : Mon Mar 03 13:39:39 2025
 Response via : Initial Calibration
 Integrator: ChemStation

Volume Inj. : 1 ul
 Signal Phase : Rxi-1ms
 Signal Info : 20M x 0.18mm x 0.18um

Compound	R.T.	Response	Conc Units

System Monitoring Compounds			
9) S ortho-Terphenyl (SURR)	11.916	6098026	36.172 ug/ml
Spiked Amount	50.000	Recovery	= 72.34%
12) S 1-chlorooctadecane (S...	13.361	4567920	37.619 ug/ml
Spiked Amount	50.000	Recovery	= 75.24%

Target Compounds

(f)=RT Delta > 1/2 Window

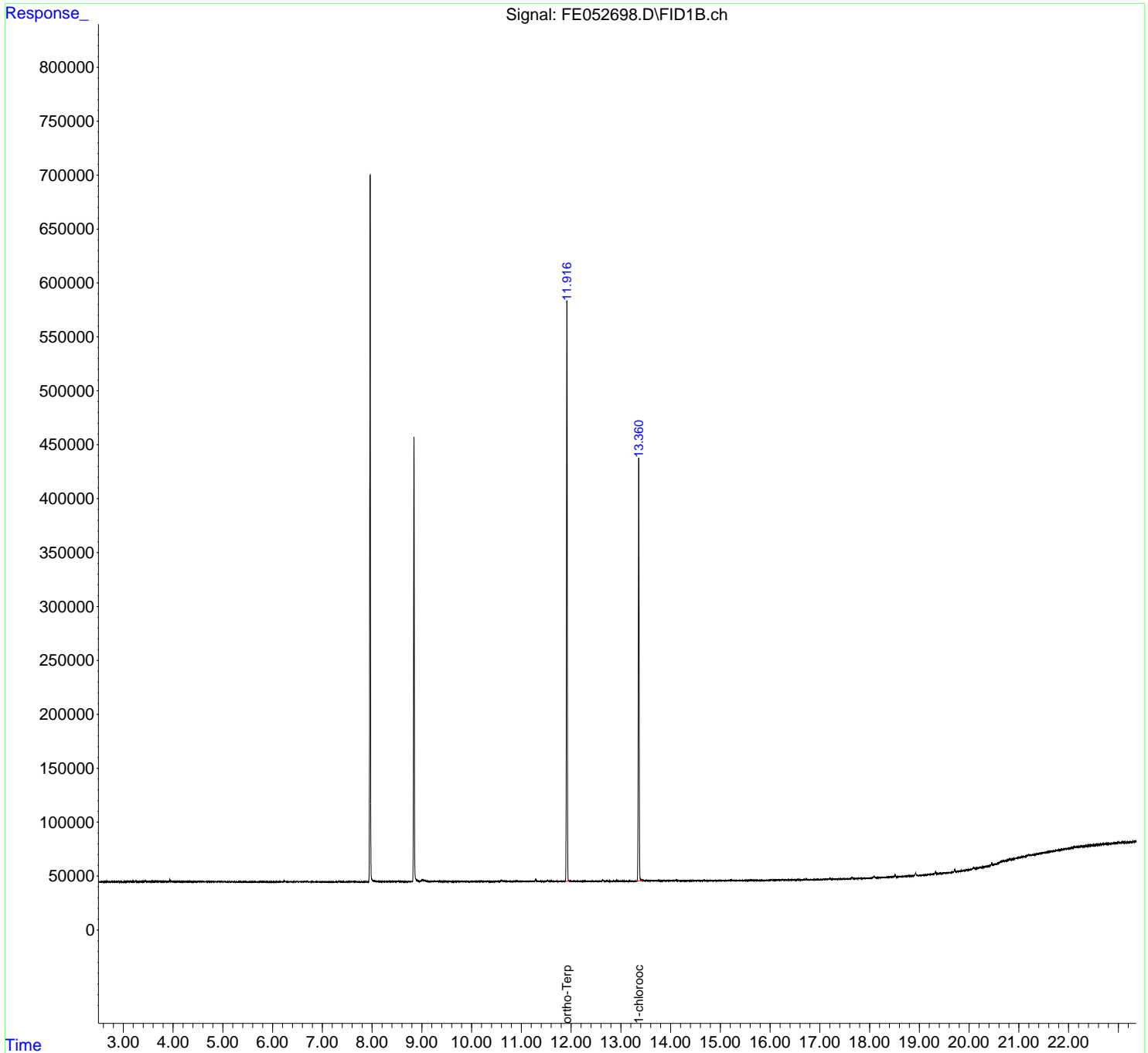
(m)=manual int.

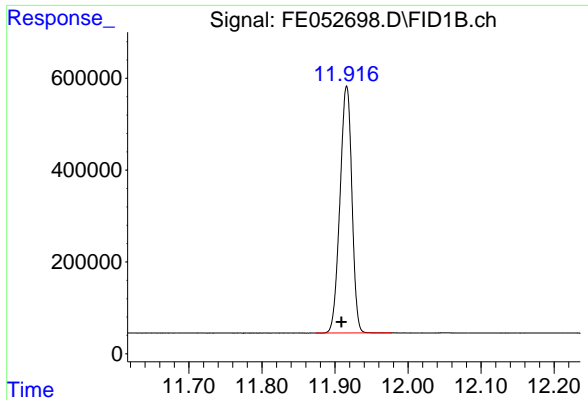
Data Path : Z:\pestpcbsrv\HPCHEM1\FID_E\Data\FE031025AL\
 Data File : FE052698.D
 Signal(s) : FID1B.ch
 Acq On : 10 Mar 2025 14:01
 Operator : YP\AJ
 Sample : PB167046BL
 Misc :
 ALS Vial : 11 Sample Multiplier: 1

Instrument :
 FID_E
 ClientSampleId :

Integration File: autoint1.e
 Quant Time: Mar 11 05:17:57 2025
 Quant Method : Z:\pestpcbsrv\HPCHEM1\FID_E\methods\Aliphatic EPH 030325.M
 Quant Title : GC Extractables
 QLast Update : Mon Mar 03 13:39:39 2025
 Response via : Initial Calibration
 Integrator: ChemStation

Volume Inj. : 1 ul
 Signal Phase : Rxi-1ms
 Signal Info : 20M x 0.18mm x 0.18um

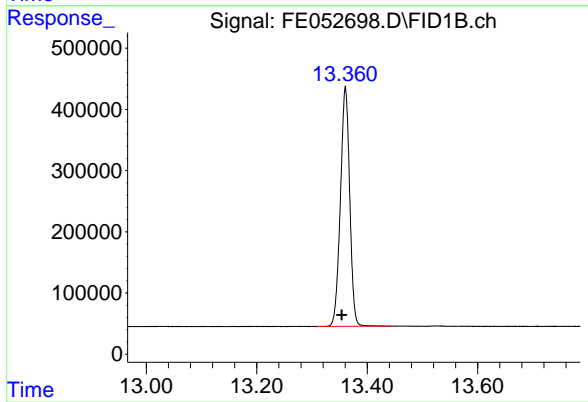




#9 ortho-Terphenyl (SURR)

R.T.: 11.916 min
Delta R.T.: 0.007 min
Response: 6098026
Conc: 36.17 ug/ml

Instrument :
FID_E
ClientSampleId :



#12 1-chlorooctadecane (SURR)

R.T.: 13.361 min
Delta R.T.: 0.006 min
Response: 4567920
Conc: 37.62 ug/ml