

Data Path : Z:\pestpcbsrv\HPCHEM1\FID_E\Data\FE031120\
 Data File : FE031455.D
 Signal(s) : FID1B.CH
 Acq On : 11 Mar 2020 21:44
 Operator : DD\AJ
 Sample : L1859-10
 Misc :
 ALS Vial : 18 Sample Multiplier: 1

Instrument :
 FID_E
 ClientSampleId :
 TP-8-SA

Integration File: autoint1.e
 Quant Time: Mar 12 03:39:42 2020
 Quant Method : Z:\pestpcbsrv\HPCHEM1\FID_E\methods\FE031020.M
 Quant Title :
 QLast Update : Wed Mar 11 09:35:11 2020
 Response via : Initial Calibration
 Integrator: ChemStation 6890 Scale Mode: Large solvent peaks clipped

Volume Inj. : 1uL
 Signal Phase : Rxi-1ms
 Signal Info : 20mx0.18mmx0.18um

Compound	R.T.	Response	Conc Units

System Monitoring Compounds			
9) S TETRACOSANE-d50 (SURR...	14.401	7083202	19.192 ug/ml
Target Compounds			

(f)=RT Delta > 1/2 Window

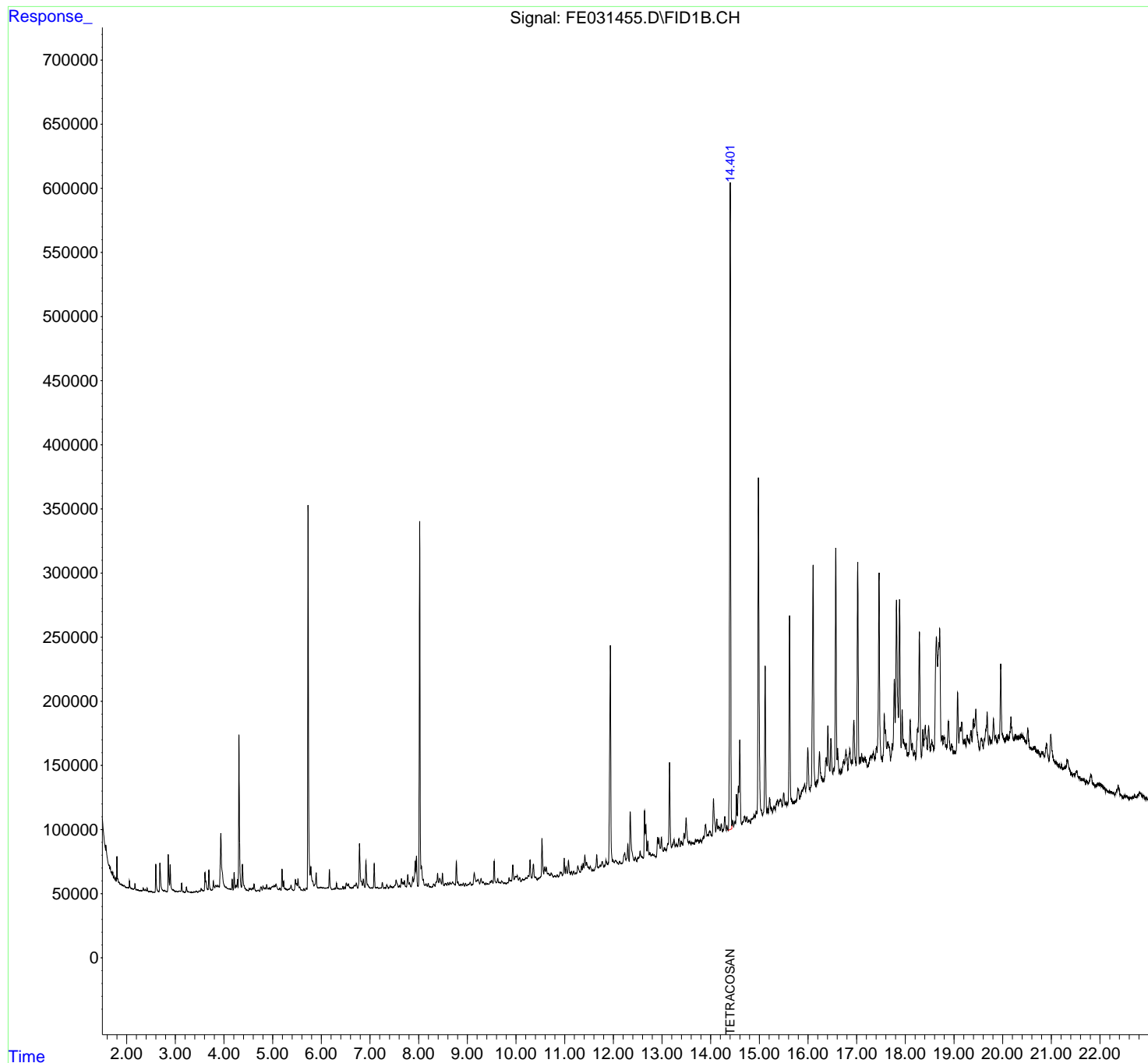
(m)=manual int.

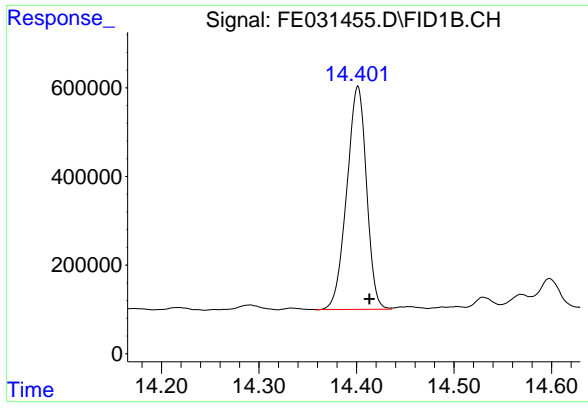
Data Path : Z:\pestpcbsrv\HPCHEM1\FID_E\Data\FE031120\
Data File : FE031455.D
Signal(s) : FID1B.CH
Acq On : 11 Mar 2020 21:44
Operator : DD\AJ
Sample : L1859-10
Misc :
ALS Vial : 18 Sample Multiplier: 1

Instrument :
FID_E
ClientSampleId :
TP-8-SA

Integration File: autoint1.e
Quant Time: Mar 12 03:39:42 2020
Quant Method : Z:\pestpcbsrv\HPCHEM1\FID_E\methods\FE031020.M
Quant Title :
QLast Update : Wed Mar 11 09:35:11 2020
Response via : Initial Calibration
Integrator: ChemStation 6890 Scale Mode: Large solvent peaks clipped

Volume Inj. : 1uL
Signal Phase : Rxi-1ms
Signal Info : 20mx0.18mmx0.18um





#9 TETRACOSANE-d50 (SURROGATE)

R.T.: 14.401 min
Delta R.T.: -0.012 min
Response: 7083202
Conc: 19.19 ug/ml

Instrument :
FID_E
ClientSampled :
TP-8-SA