

Data Path : Z:\pestpcbsrv\HPCHEM1\FID_E\Data\FE031125AL\
 Data File : FE052737.D
 Signal(s) : FID1B.ch
 Acq On : 11 Mar 2025 16:39
 Operator : YP\AJ
 Sample : Q1534-09
 Misc :
 ALS Vial : 17 Sample Multiplier: 1

Instrument :
 FID_E
 ClientSampleId :

Integration File: autoint1.e
 Quant Time: Mar 12 02:11:01 2025
 Quant Method : Z:\pestpcbsrv\HPCHEM1\FID_E\methods\Aliphatic EPH 030325.M
 Quant Title : GC Extractables
 QLast Update : Mon Mar 03 13:39:39 2025
 Response via : Initial Calibration
 Integrator: ChemStation

Volume Inj. : 1 ul
 Signal Phase : Rxi-1ms
 Signal Info : 20M x 0.18mm x 0.18um

Compound	R.T.	Response	Conc Units

System Monitoring Compounds			
9) S ortho-Terphenyl (SURR)	11.910	4372994	25.939 ug/ml
Spiked Amount	50.000	Recovery	= 51.88%
12) S 1-chlorooctadecane (S...	13.354	3370583	27.758 ug/ml
Spiked Amount	50.000	Recovery	= 55.52%
Target Compounds			
10) T n-Eicosane (C20)	12.965f	1431974	9.864 ug/ml
13) T n-Docosane (C22)	14.133	253195	1.779 ug/ml
14) T n-Tetracosane (C24)	15.190	734845	5.135 ug/ml
16) T n-Octacosane (C28)	17.195	234721	1.651 ug/ml
17) T n-Tricontane (C30)	18.082	210860	1.428 ug/ml
19) T n-Tetratriacontane (C34)	19.741	218018	1.618 ug/ml

(f)=RT Delta > 1/2 Window

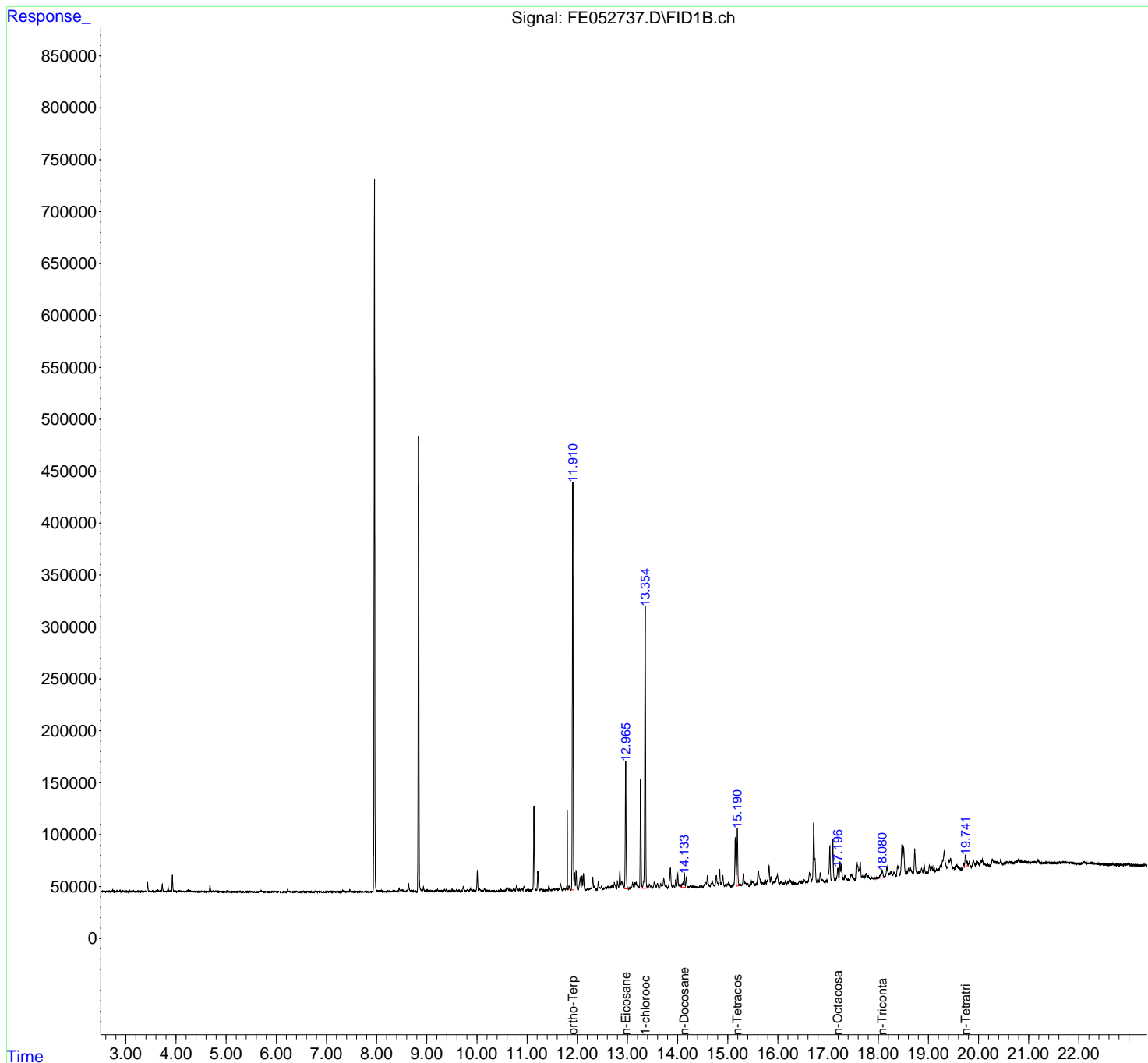
(m)=manual int.

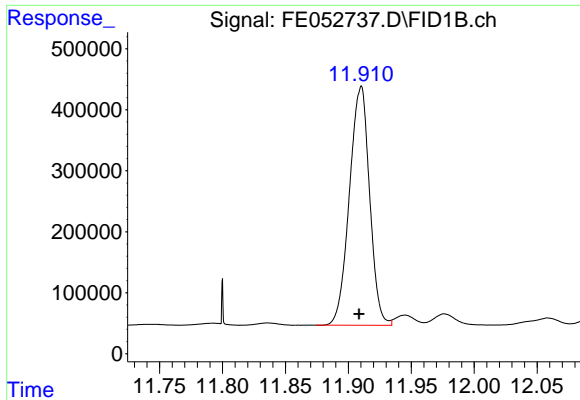
Data Path : Z:\pestpcbsrv\HPCHEM1\FID_E\Data\FE031125AL\
 Data File : FE052737.D
 Signal(s) : FID1B.ch
 Acq On : 11 Mar 2025 16:39
 Operator : YP\AJ
 Sample : Q1534-09
 Misc :
 ALS Vial : 17 Sample Multiplier: 1

Instrument :
 FID_E
 ClientSampleId :

Integration File: autoint1.e
 Quant Time: Mar 12 02:11:01 2025
 Quant Method : Z:\pestpcbsrv\HPCHEM1\FID_E\methods\Aliphatic EPH 030325.M
 Quant Title : GC Extractables
 QLast Update : Mon Mar 03 13:39:39 2025
 Response via : Initial Calibration
 Integrator: ChemStation

Volume Inj. : 1 ul
 Signal Phase : Rxi-1ms
 Signal Info : 20M x 0.18mm x 0.18um

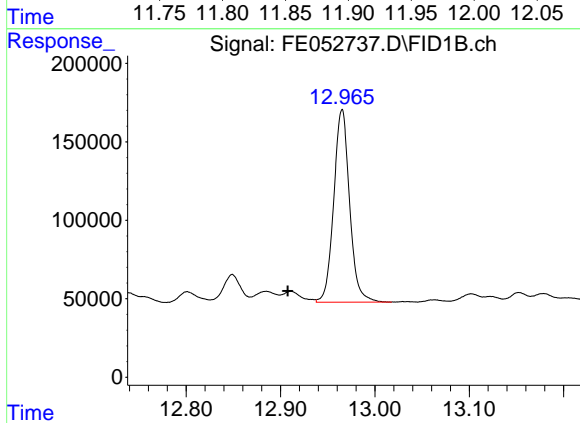




#9 ortho-Terphenyl (SURR)

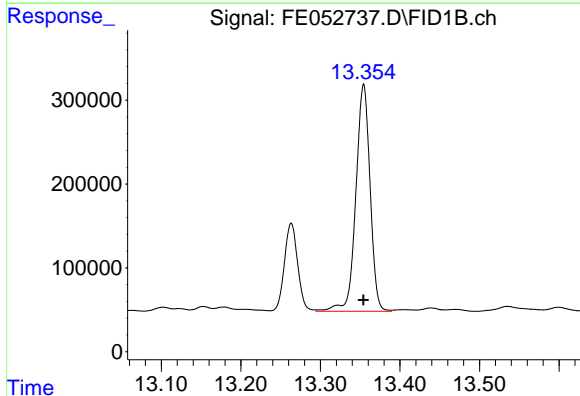
R.T.: 11.910 min
 Delta R.T.: 0.001 min
 Response: 4372994
 Conc: 25.94 ug/ml

Instrument :
 FID_E
 ClientSampleId :



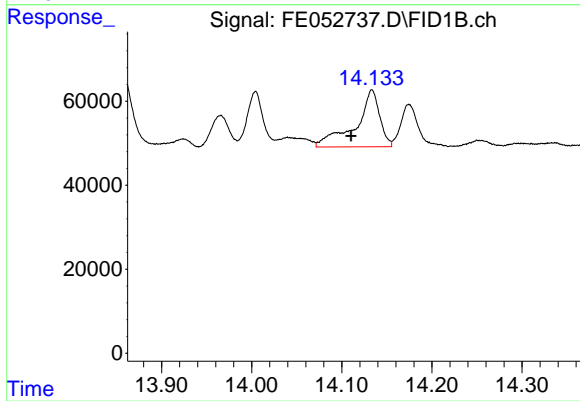
#10 n-Eicosane (C20)

R.T.: 12.965 min
 Delta R.T.: 0.057 min
 Response: 1431974
 Conc: 9.86 ug/ml



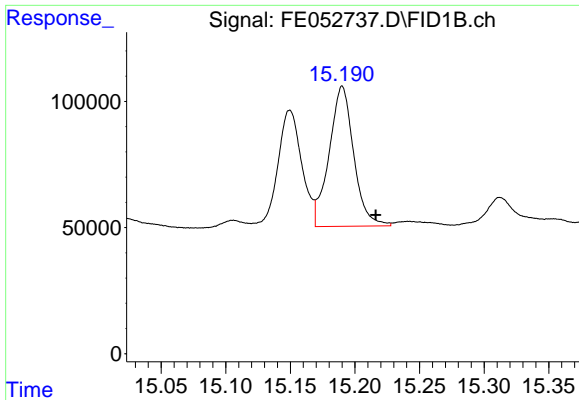
#12 1-chlorooctadecane (SURR)

R.T.: 13.354 min
 Delta R.T.: 0.000 min
 Response: 3370583
 Conc: 27.76 ug/ml



#13 n-Docosane (C22)

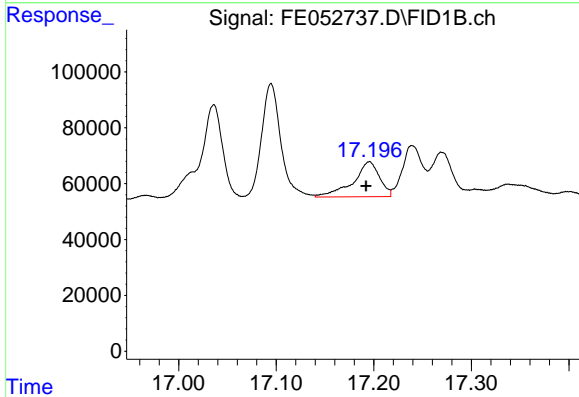
R.T.: 14.133 min
 Delta R.T.: 0.023 min
 Response: 253195
 Conc: 1.78 ug/ml



#14 n-Tetracosane (C24)

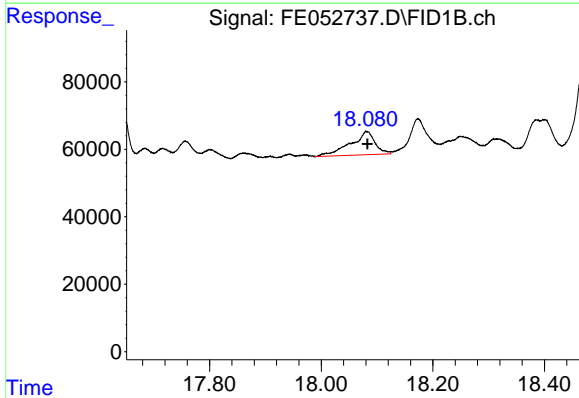
R.T.: 15.190 min
 Delta R.T.: -0.026 min
 Response: 734845
 Conc: 5.13 ug/ml

Instrument :
 FID_E
 ClientSampleId :



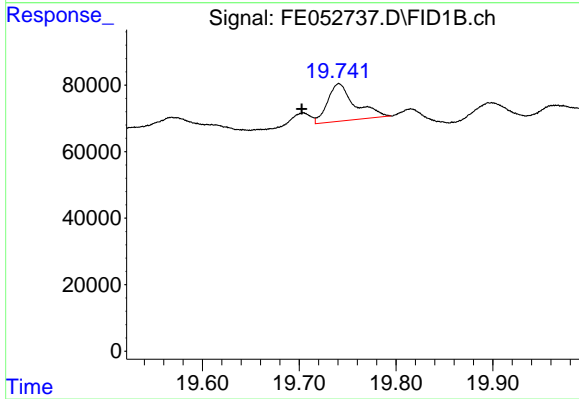
#16 n-Octacosane (C28)

R.T.: 17.195 min
 Delta R.T.: 0.003 min
 Response: 234721
 Conc: 1.65 ug/ml



#17 n-Tricontane (C30)

R.T.: 18.082 min
 Delta R.T.: 0.000 min
 Response: 210860
 Conc: 1.43 ug/ml



#19 n-Tetratriacontane (C34)

R.T.: 19.741 min
 Delta R.T.: 0.038 min
 Response: 218018
 Conc: 1.62 ug/ml