

Data Path : Z:\pestpcbsrv\HPCHEM1\FID_E\Data\FE031723AL\
Data File : FE040855.D
Signal(s) : FID1B.ch
Acq On : 17 Mar 2023 08:20
Operator : YP\AJ
Sample : I.BLK
Misc :
ALS Vial : 1 Sample Multiplier: 1

Integration File: autoint1.e
Quant Time: Mar 18 00:30:36 2023
Quant Method : Z:\pestpcbsrv\HPCHEM1\FID_E\methods\Aliphatic EPH 022823.M
Quant Title : GC Extractables
QLast Update : Tue Feb 28 03:05:09 2023
Response via : Initial Calibration
Integrator: ChemStation

Volume Inj. : 1 ul
Signal Phase : Rxi-1ms
Signal Info : 20M x 0.18mm x 0.18um

Compound	R.T.	Response	Conc Units

System Monitoring Compounds			
Target Compounds			
20) T n-Hexatriacontane (C36)	20.438	36436	0.251 ug/ml

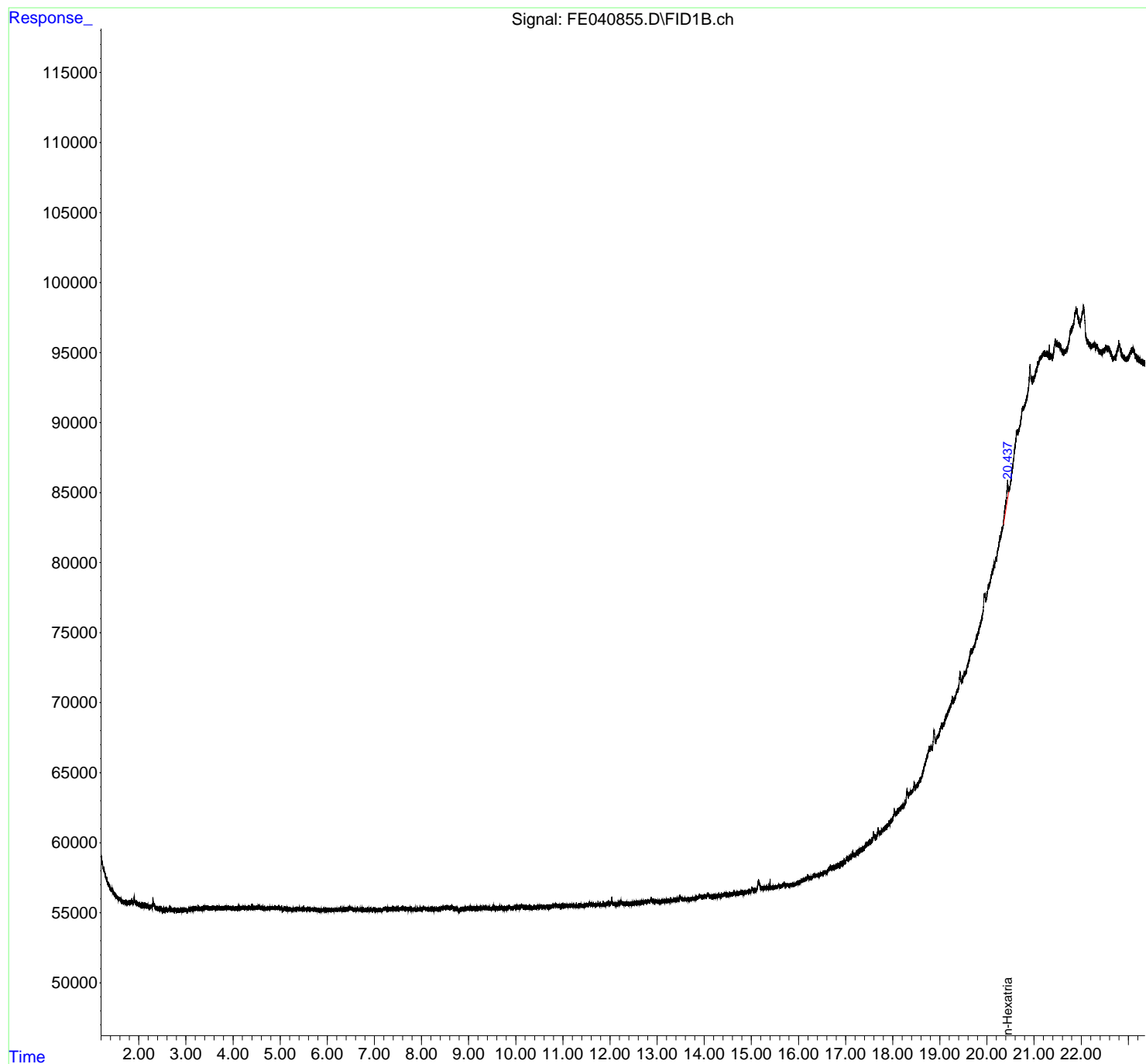
(f)=RT Delta > 1/2 Window

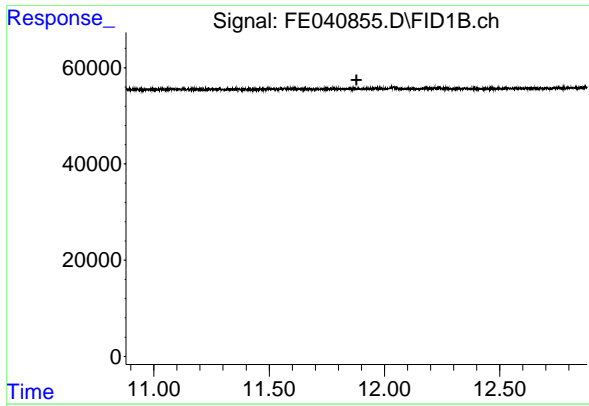
(m)=manual int.

Data Path : Z:\pestpcbsrv\HPCHEM1\FID_E\Data\FE031723AL\
 Data File : FE040855.D
 Signal(s) : FID1B.ch
 Acq On : 17 Mar 2023 08:20
 Operator : YP\AJ
 Sample : I.BLK
 Misc :
 ALS Vial : 1 Sample Multiplier: 1

Integration File: autoint1.e
 Quant Time: Mar 18 00:30:36 2023
 Quant Method : Z:\pestpcbsrv\HPCHEM1\FID_E\methods\Aliphatic EPH 022823.M
 Quant Title : GC Extractables
 QLast Update : Tue Feb 28 03:05:09 2023
 Response via : Initial Calibration
 Integrator: ChemStation

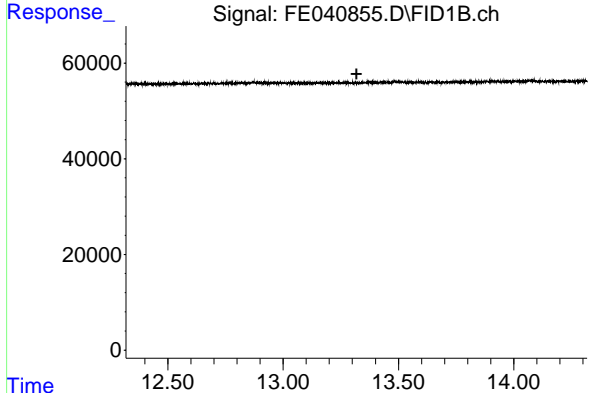
Volume Inj. : 1 ul
 Signal Phase : Rxi-1ms
 Signal Info : 20M x 0.18mm x 0.18um





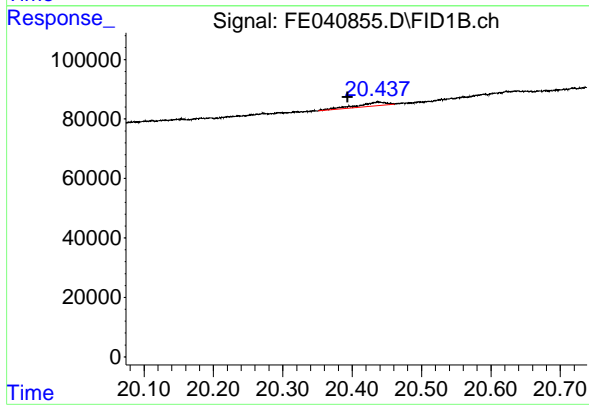
#9 ortho-Terphenyl (SURR)

R.T.: 0.000 min
 Exp R.T. : 11.879 min
 Response: 0
 Conc: N.D.



#12 1-chlorooctadecane (SURR)

R.T.: 0.000 min
 Exp R.T. : 13.318 min
 Response: 0
 Conc: N.D.



#20 n-Hexatriacontane (C36)

R.T.: 20.438 min
 Delta R.T.: 0.044 min
 Response: 36436
 Conc: 0.25 ug/ml