

Data Path : Z:\pestpcbsrv\HPCHEM1\FID_E\Data\FE031723AL\
Data File : FE040863.D
Signal(s) : FID1B.ch
Acq On : 17 Mar 2023 12:31
Operator : YP\AJ
Sample : 01939-04DL 100X
Misc :
ALS Vial : 12 Sample Multiplier: 1

Integration File: autoint1.e
Quant Time: Mar 18 00:31:34 2023
Quant Method : Z:\pestpcbsrv\HPCHEM1\FID_E\methods\Aliphatic EPH 022823.M
Quant Title : GC Extractables
QLast Update : Tue Feb 28 03:05:09 2023
Response via : Initial Calibration
Integrator: ChemStation

Volume Inj. : 1 ul
Signal Phase : Rxi-1ms
Signal Info : 20M x 0.18mm x 0.18um

Compound	R.T.	Response	Conc Units

System Monitoring Compounds			
Target Compounds			

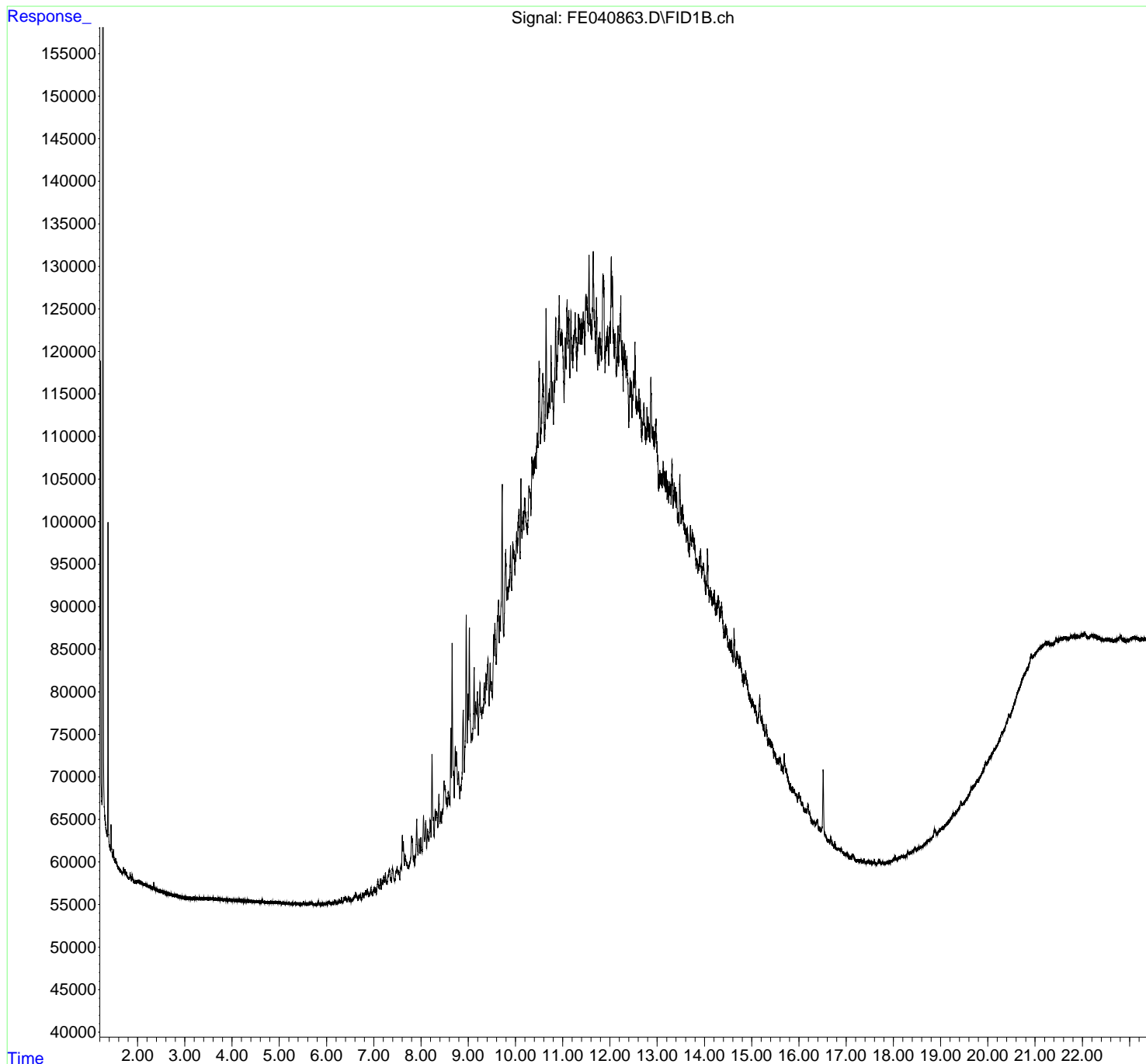
(f)=RT Delta > 1/2 Window

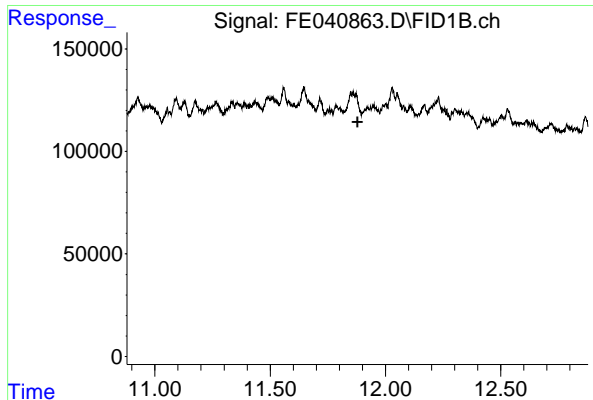
(m)=manual int.

Data Path : Z:\pestpcbsrv\HPCHEM1\FID_E\Data\FE031723AL\
Data File : FE040863.D
Signal(s) : FID1B.ch
Acq On : 17 Mar 2023 12:31
Operator : YP\AJ
Sample : 01939-04DL 100X
Misc :
ALS Vial : 12 Sample Multiplier: 1

Integration File: autoint1.e
Quant Time: Mar 18 00:31:34 2023
Quant Method : Z:\pestpcbsrv\HPCHEM1\FID_E\methods\Aliphatic EPH 022823.M
Quant Title : GC Extractables
QLast Update : Tue Feb 28 03:05:09 2023
Response via : Initial Calibration
Integrator: ChemStation

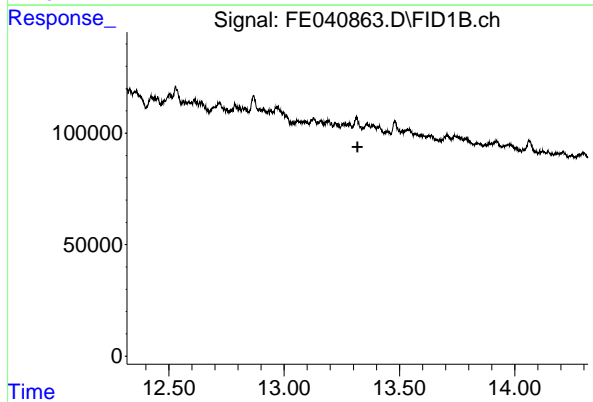
Volume Inj. : 1 ul
Signal Phase : Rxi-1ms
Signal Info : 20M x 0.18mm x 0.18um





#9 ortho-Terphenyl (SURR)

R.T.: 0.000 min
Exp R.T. : 11.879 min
Response: 0
Conc: N.D.



#12 1-chlorooctadecane (SURR)

R.T.: 0.000 min
Exp R.T. : 13.318 min
Response: 0
Conc: N.D.