

Data Path : Z:\pestpcbsrv\HPCHEM1\FID\_E\Data\FE032025AL\  
 Data File : FE052883.D  
 Signal(s) : FID1B.ch  
 Acq On : 20 Mar 2025 13:08  
 Operator : YP\AJ  
 Sample : PB167227BL  
 Misc :  
 ALS Vial : 11 Sample Multiplier: 1

**Instrument :**  
 FID\_E  
**ClientSampleId :**  
 PB167227BL

Integration File: autoint1.e  
 Quant Time: Mar 20 23:21:21 2025  
 Quant Method : Z:\pestpcbsrv\HPCHEM1\FID\_E\methods\Aliphatic EPH 030325.M  
 Quant Title : GC Extractables  
 QLast Update : Mon Mar 03 13:39:39 2025  
 Response via : Initial Calibration  
 Integrator: ChemStation

Volume Inj. : 1 ul  
 Signal Phase : Rxi-1ms  
 Signal Info : 20M x 0.18mm x 0.18um

Compound	R.T.	Response	Conc Units
-----			
System Monitoring Compounds			
9) S ortho-Terphenyl (SURR)	11.905	6123798	36.324 ug/ml
Spiked Amount	50.000	Recovery	= 72.65%
12) S 1-chlorooctadecane (S...	13.350	4630335	38.133 ug/ml
Spiked Amount	50.000	Recovery	= 76.27%

Target Compounds

-----

(f)=RT Delta > 1/2 Window

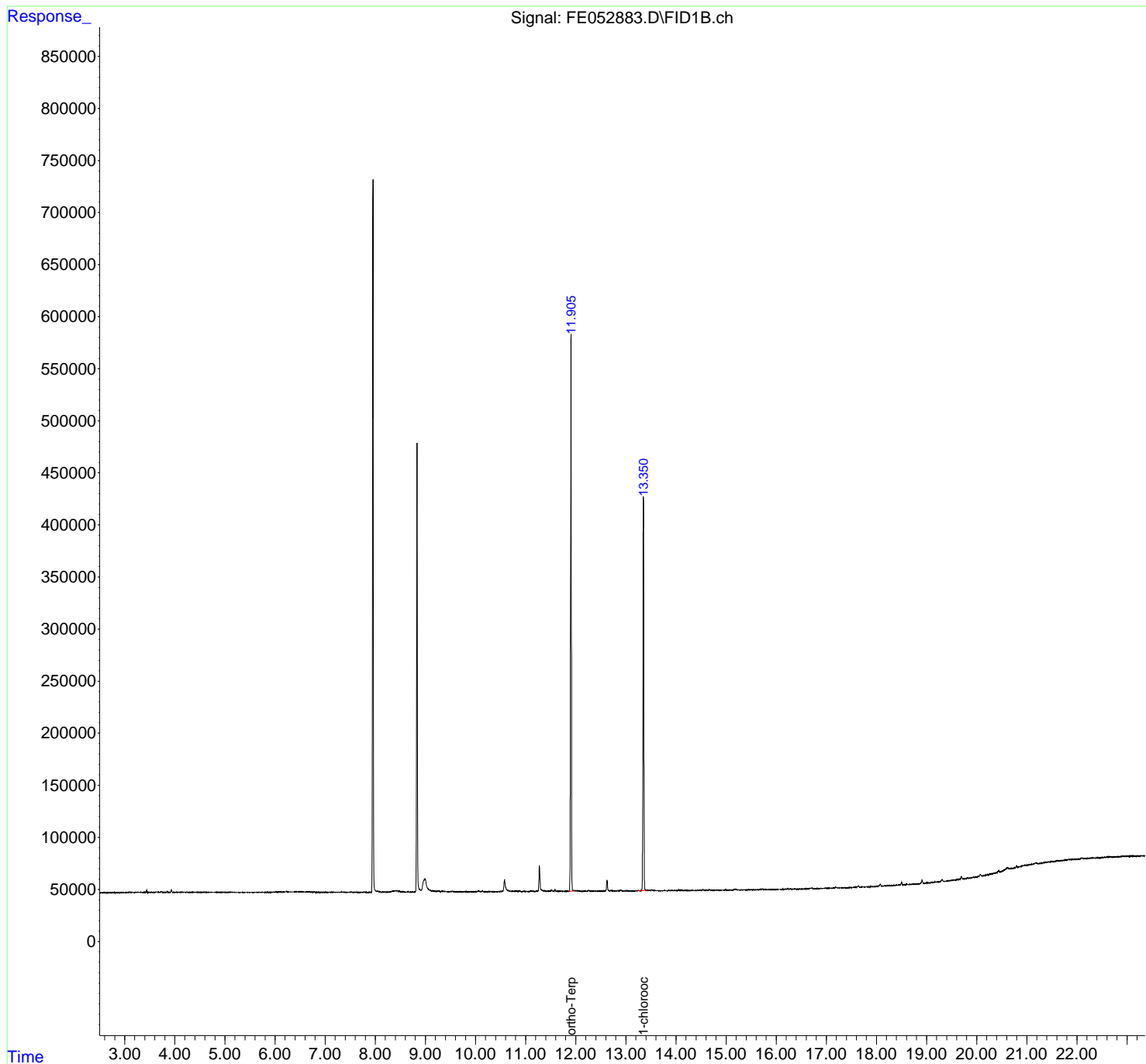
(m)=manual int.

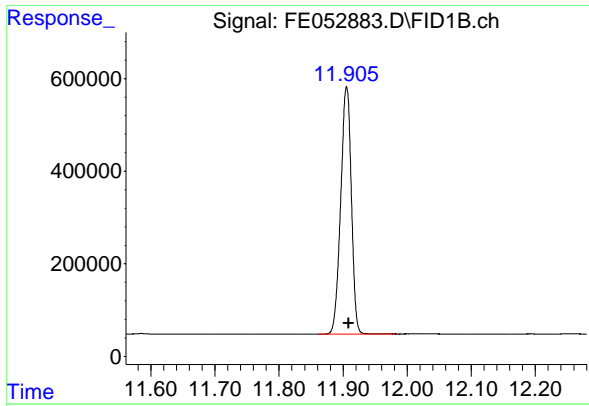
Data Path : Z:\pestpcbsrv\HPCHEM1\FID\_E\Data\FE032025AL\  
 Data File : FE052883.D  
 Signal(s) : FID1B.ch  
 Acq On : 20 Mar 2025 13:08  
 Operator : YP\AJ  
 Sample : PB167227BL  
 Misc :  
 ALS Vial : 11 Sample Multiplier: 1

Instrument :  
 FID\_E  
 ClientSampleId :  
 PB167227BL

Integration File: autoint1.e  
 Quant Time: Mar 20 23:21:21 2025  
 Quant Method : Z:\pestpcbsrv\HPCHEM1\FID\_E\methods\Aliphatic EPH 030325.M  
 Quant Title : GC Extractables  
 QLast Update : Mon Mar 03 13:39:39 2025  
 Response via : Initial Calibration  
 Integrator: ChemStation

Volume Inj. : 1 ul  
 Signal Phase : Rxi-1ms  
 Signal Info : 20M x 0.18mm x 0.18um

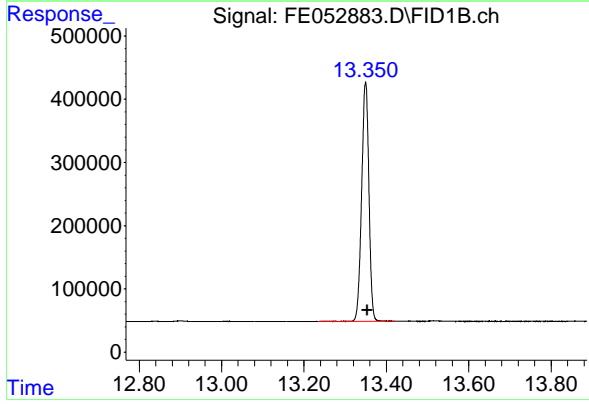




#9 ortho-Terphenyl (SURR)

R.T.: 11.905 min  
Delta R.T.: -0.003 min  
Response: 6123798  
Conc: 36.32 ug/ml

Instrument :  
FID\_E  
ClientSampleId :  
PB167227BL



#12 1-chlorooctadecane (SURR)

R.T.: 13.350 min  
Delta R.T.: -0.004 min  
Response: 4630335  
Conc: 38.13 ug/ml