

Data Path : Z:\pestpcbsrv\HPCHEM1\FID_E\Data\FE032124AL\
 Data File : FE047254.D
 Signal(s) : FID1B.ch
 Acq On : 21 Mar 2024 17:36
 Operator : YP\AJ
 Sample : P1815-02
 Misc :
 ALS Vial : 20 Sample Multiplier: 1

Integration File: autoint1.e
 Quant Time: Mar 22 01:23:22 2024
 Quant Method : Z:\pestpcbsrv\HPCHEM1\FID_E\methods\Aliphatic EPH 031324.M
 Quant Title : GC Extractables
 QLast Update : Thu Mar 14 01:54:27 2024
 Response via : Initial Calibration
 Integrator: ChemStation

Volume Inj. : 1 ul
 Signal Phase : Rxi-1ms
 Signal Info : 20M x 0.18mm x 0.18um

| Compound | R.T. | Response | Conc Units |
|--------------------------------|--------|----------|--------------|
| ----- | | | |
| System Monitoring Compounds | | | |
| 9) S ortho-Terphenyl (SURR) | 11.981 | 4954750 | 30.030 ug/ml |
| Spiked Amount | 50.000 | Recovery | = 60.06% |
| 12) S 1-chlorooctadecane (S... | 13.414 | 4127975 | 32.376 ug/ml |
| Spiked Amount | 50.000 | Recovery | = 64.75% |

Target Compounds

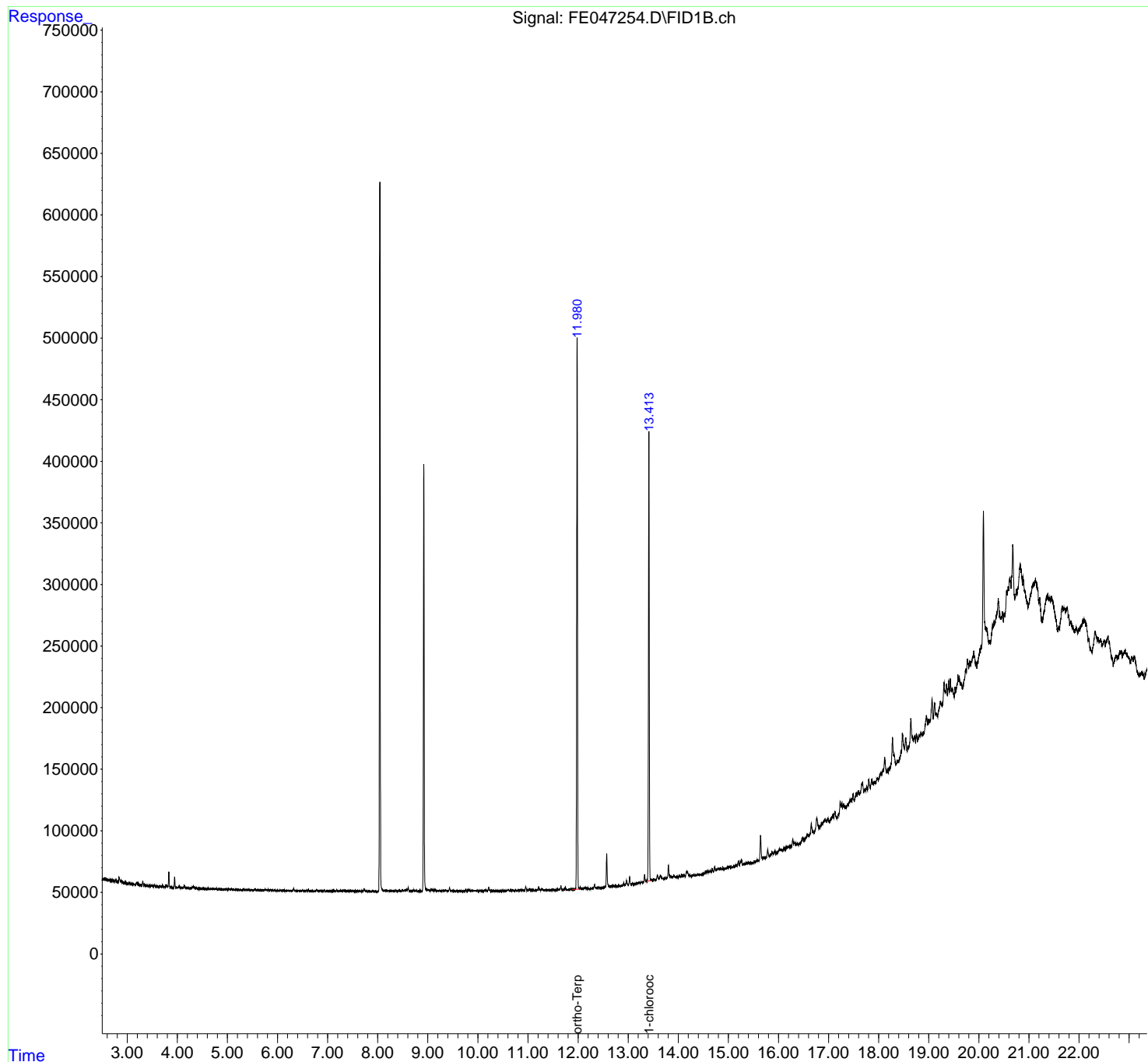
(f)=RT Delta > 1/2 Window

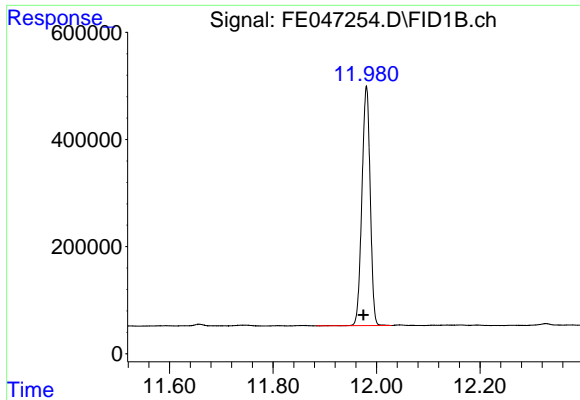
(m)=manual int.

Data Path : Z:\pestpcbsrv\HPCHEM1\FID_E\Data\FE032124AL\
Data File : FE047254.D
Signal(s) : FID1B.ch
Acq On : 21 Mar 2024 17:36
Operator : YP\AJ
Sample : P1815-02
Misc :
ALS Vial : 20 Sample Multiplier: 1

Integration File: autoint1.e
Quant Time: Mar 22 01:23:22 2024
Quant Method : Z:\pestpcbsrv\HPCHEM1\FID_E\methods\Aliphatic EPH 031324.M
Quant Title : GC Extractables
QLast Update : Thu Mar 14 01:54:27 2024
Response via : Initial Calibration
Integrator: ChemStation

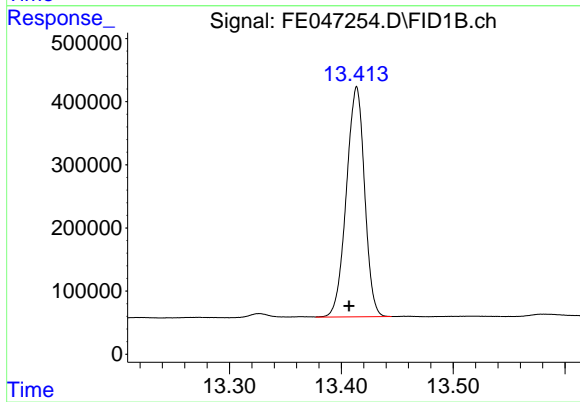
Volume Inj. : 1 ul
Signal Phase : Rxi-1ms
Signal Info : 20M x 0.18mm x 0.18um





#9 ortho-Terphenyl (SURR)

R.T.: 11.981 min
Delta R.T.: 0.006 min
Response: 4954750
Conc: 30.03 ug/ml



#12 1-chlorooctadecane (SURR)

R.T.: 13.414 min
Delta R.T.: 0.007 min
Response: 4127975
Conc: 32.38 ug/ml