

Data Path : Z:\pestpcbsrv\HPCHEM1\FID_E\Data\FE032125AL\
 Data File : FE052931.D
 Signal(s) : FID1B.ch
 Acq On : 22 Mar 2025 01:54
 Operator : YP\AJ
 Sample : Q1614-02DL 5X
 Misc :
 ALS Vial : 30 Sample Multiplier: 1

Instrument :
 FID_E
 ClientSampleId :

Integration File: autoint1.e
 Quant Time: Mar 22 03:11:18 2025
 Quant Method : Z:\pestpcbsrv\HPCHEM1\FID_E\methods\Aliphatic EPH 030325.M
 Quant Title : GC Extractables
 QLast Update : Mon Mar 03 13:39:39 2025
 Response via : Initial Calibration
 Integrator: ChemStation

Volume Inj. : 1 ul
 Signal Phase : Rxi-1ms
 Signal Info : 20M x 0.18mm x 0.18um

Compound	R.T.	Response	Conc Units

System Monitoring Compounds			
9) S ortho-Terphenyl (SURR)	11.905	1167293	6.924 ug/ml
Spiked Amount	50.000	Recovery =	13.85%
12) S 1-chlorooctadecane (S...	13.351	894397	7.366 ug/ml
Spiked Amount	50.000	Recovery =	14.73%
Target Compounds			
5) T A~2-methylnaphthalene...	7.329	116797	0.721 ug/ml
6) T n-Tetradecane (C14)	8.525	296450	1.959 ug/ml
7) T n-Hexadecane (C16)	10.140	371095	2.427 ug/ml
8) T n-Octadecane (C18)	11.589	346314	2.276 ug/ml
10) T n-Eicosane (C20)	12.905	269753	1.858 ug/ml
11) T n-Heneicosane (C21)	13.518	146534	1.030 ug/ml
13) T n-Docosane (C22)	14.108	132172	0.929 ug/ml
16) T n-Octacosane (C28)	17.193	64788	0.456 ug/ml
17) T n-Tricontane (C30)	18.081	188660	1.277 ug/ml
18) T n-Dotriacontane (C32)	18.914	123829	0.853 ug/ml
19) T n-Tetratriacontane (C34)	19.700	123150	0.914 ug/ml
20) T n-Hexatriacontane (C36)	20.444	68222	0.574 ug/ml

(f)=RT Delta > 1/2 Window

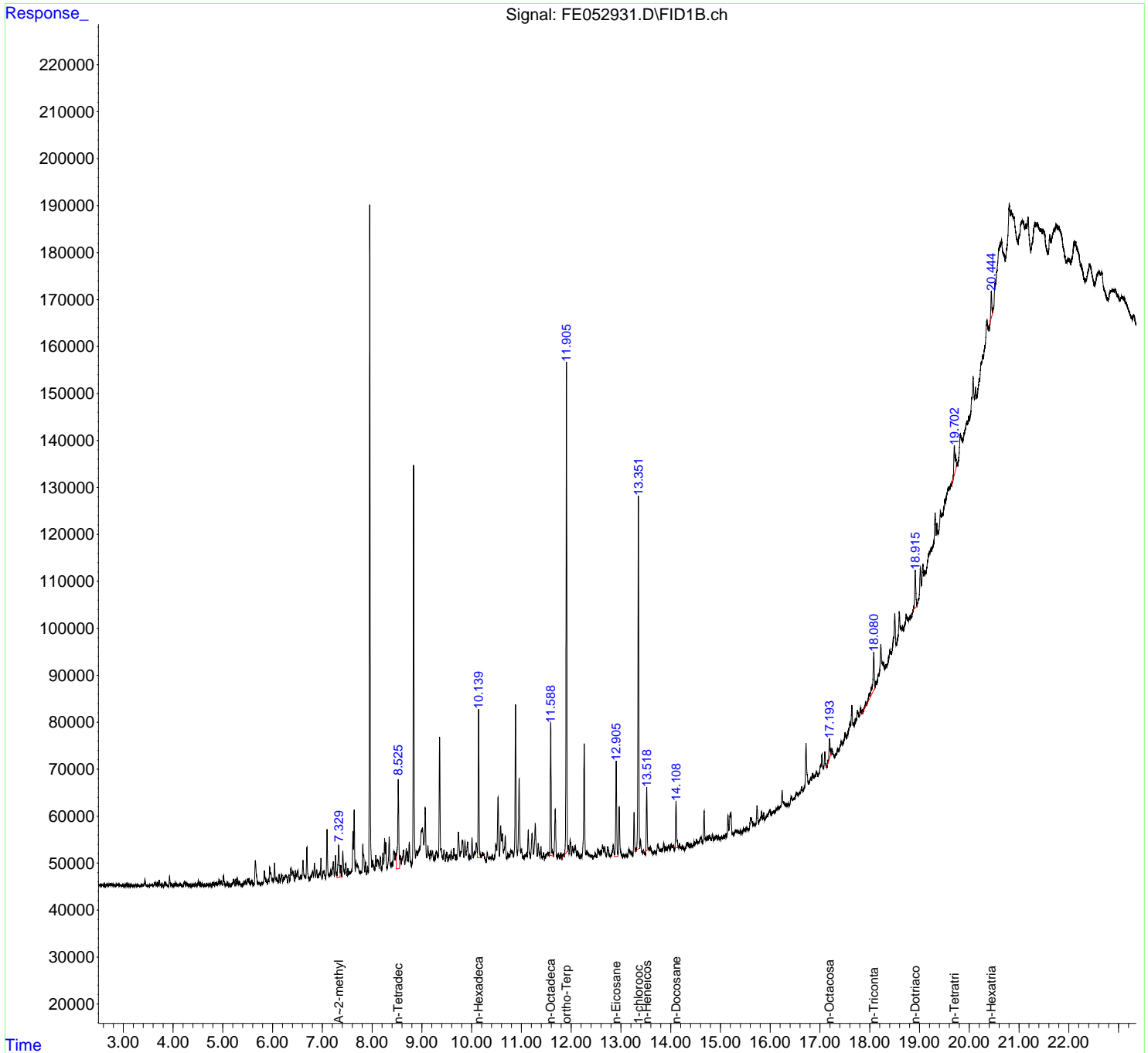
(m)=manual int.

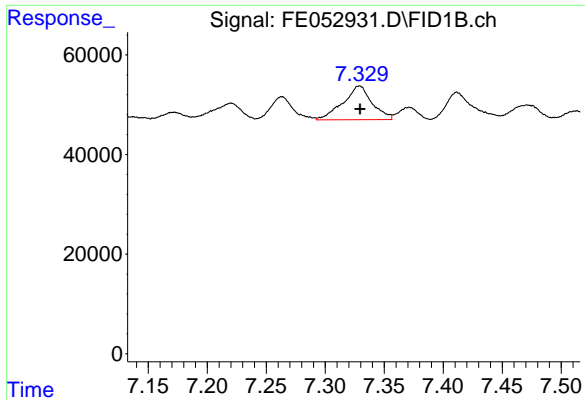
Data Path : Z:\pestpcbsrv\HPCHEM1\FID_E\Data\FE032125AL\
Data File : FE052931.D
Signal(s) : FID1B.ch
Acq On : 22 Mar 2025 01:54
Operator : YP\AJ
Sample : Q1614-02DL 5X
Misc :
ALS Vial : 30 Sample Multiplier: 1

Instrument :
FID_E
ClientSampleId :

Integration File: autoint1.e
Quant Time: Mar 22 03:11:18 2025
Quant Method : Z:\pestpcbsrv\HPCHEM1\FID_E\methods\Aliphatic EPH 030325.M
Quant Title : GC Extractables
QLast Update : Mon Mar 03 13:39:39 2025
Response via : Initial Calibration
Integrator: ChemStation

Volume Inj. : 1 ul
Signal Phase : Rxi-1ms
Signal Info : 20M x 0.18mm x 0.18um

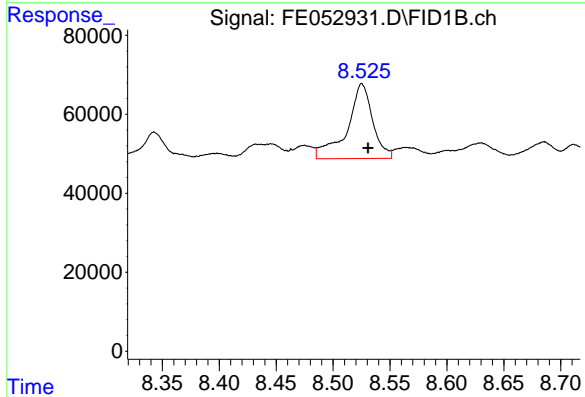




#5 A~2-methylnaphthalene (C12.89)

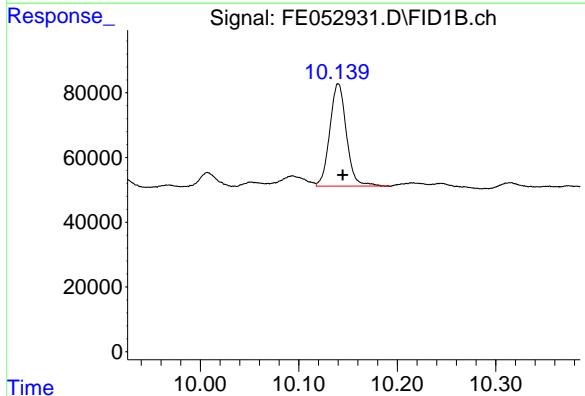
R.T.: 7.329 min
 Delta R.T.: 0.000 min
 Response: 116797
 Conc: 0.72 ug/ml

Instrument :
 FID_E
 ClientSampleId :



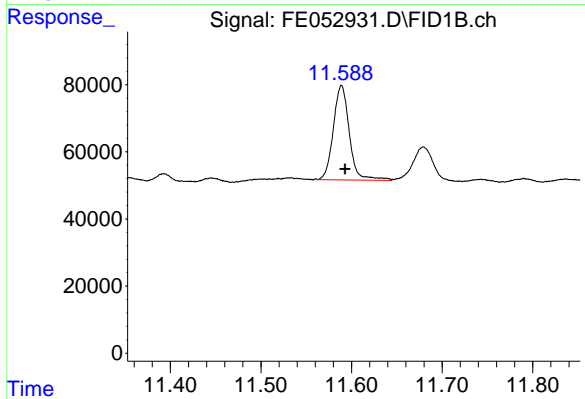
#6 n-Tetradecane (C14)

R.T.: 8.525 min
 Delta R.T.: -0.005 min
 Response: 296450
 Conc: 1.96 ug/ml



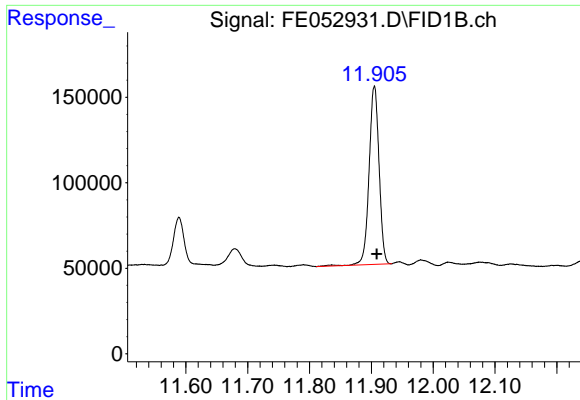
#7 n-Hexadecane (C16)

R.T.: 10.140 min
 Delta R.T.: -0.004 min
 Response: 371095
 Conc: 2.43 ug/ml



#8 n-Octadecane (C18)

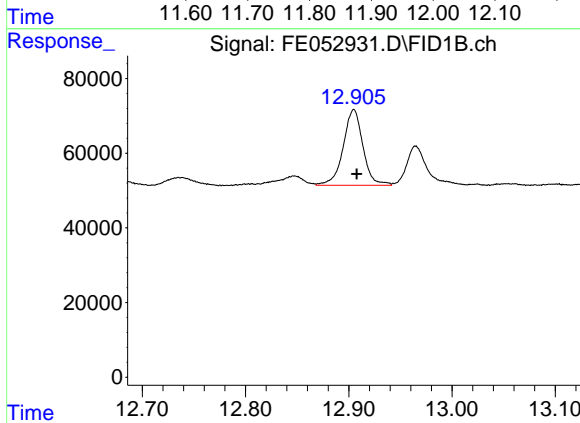
R.T.: 11.589 min
 Delta R.T.: -0.004 min
 Response: 346314
 Conc: 2.28 ug/ml



#9 ortho-Terphenyl (SURR)

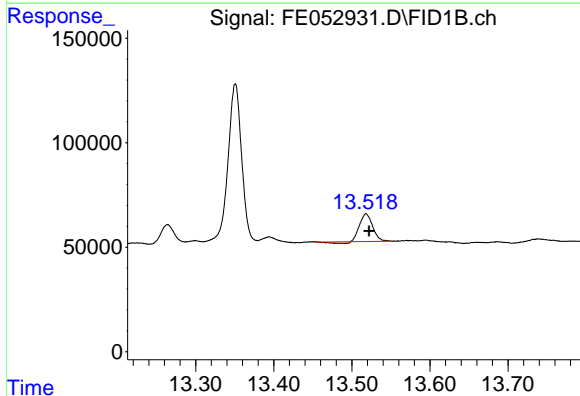
R.T.: 11.905 min
 Delta R.T.: -0.004 min
 Response: 1167293
 Conc: 6.92 ug/ml

Instrument :
 FID_E
 ClientSampleId :



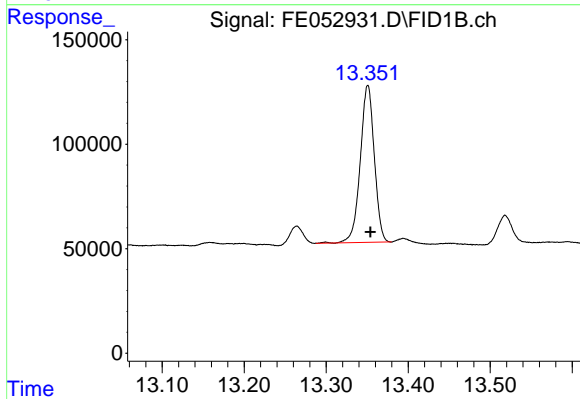
#10 n-Eicosane (C20)

R.T.: 12.905 min
 Delta R.T.: -0.003 min
 Response: 269753
 Conc: 1.86 ug/ml



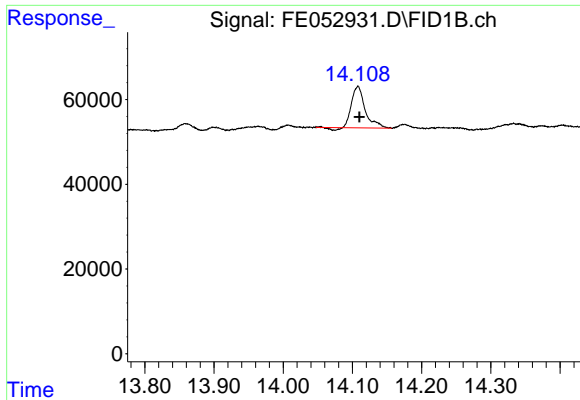
#11 n-Heneicosane (C21)

R.T.: 13.518 min
 Delta R.T.: -0.004 min
 Response: 146534
 Conc: 1.03 ug/ml



#12 1-chlorooctadecane (SURR)

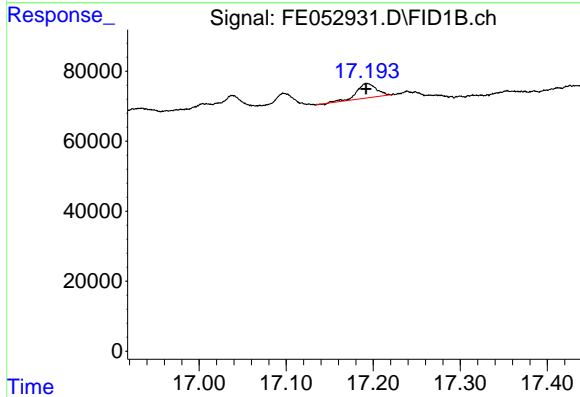
R.T.: 13.351 min
 Delta R.T.: -0.003 min
 Response: 894397
 Conc: 7.37 ug/ml



#13 n-Docosane (C22)

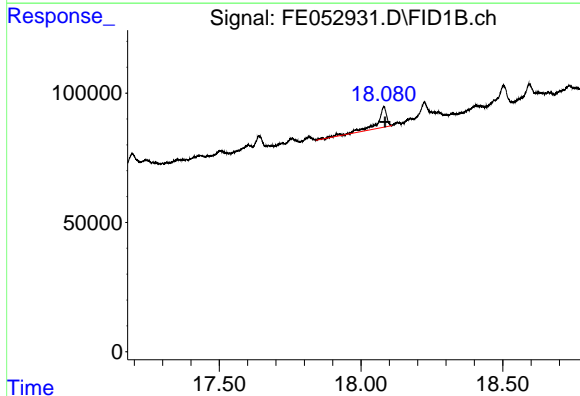
R.T.: 14.108 min
 Delta R.T.: -0.003 min
 Response: 132172
 Conc: 0.93 ug/ml

Instrument :
 FID_E
 ClientSampleId :



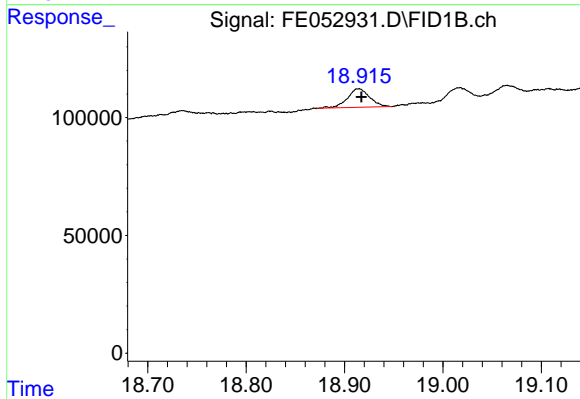
#16 n-Octacosane (C28)

R.T.: 17.193 min
 Delta R.T.: 0.001 min
 Response: 64788
 Conc: 0.46 ug/ml



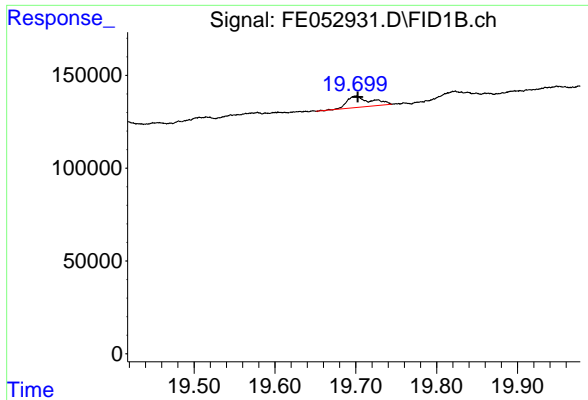
#17 n-Tricontane (C30)

R.T.: 18.081 min
 Delta R.T.: -0.004 min
 Response: 188660
 Conc: 1.28 ug/ml



#18 n-Dotriacontane (C32)

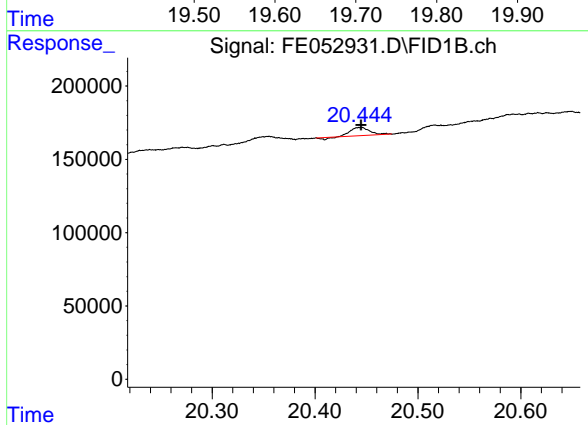
R.T.: 18.914 min
 Delta R.T.: -0.003 min
 Response: 123829
 Conc: 0.85 ug/ml



#19 n-Tetratriacontane (C34)

R.T.: 19.700 min
Delta R.T.: -0.002 min
Response: 123150
Conc: 0.91 ug/ml

Instrument :
FID_E
ClientSampleId :



#20 n-Hexatriacontane (C36)

R.T.: 20.444 min
Delta R.T.: -0.001 min
Response: 68222
Conc: 0.57 ug/ml