

Data Path : Z:\pestpcbsrv\HPCHEM1\FID_E\Data\FE032223AL\
 Data File : FE040954.D
 Signal(s) : FID1B.ch
 Acq On : 22 Mar 2023 20:44
 Operator : YP\AJ
 Sample : 02020-34
 Misc :
 ALS Vial : 18 Sample Multiplier: 1

Instrument :
 FID_E
 ClientSampleId :

Integration File: autoint1.e
 Quant Time: Mar 23 00:14:35 2023
 Quant Method : Z:\pestpcbsrv\HPCHEM1\FID_E\methods\Aliphatic EPH 022823.M
 Quant Title : GC Extractables
 QLast Update : Tue Feb 28 03:05:09 2023
 Response via : Initial Calibration
 Integrator: ChemStation

Volume Inj. : 1 ul
 Signal Phase : Rxi-1ms
 Signal Info : 20M x 0.18mm x 0.18um

Compound	R.T.	Response	Conc Units

System Monitoring Compounds			
9) S ortho-Terphenyl (SURR)	11.866	5673711	30.371 ug/ml
Spiked Amount	50.000	Recovery	= 60.74%
12) S 1-chlorooctadecane (S...	13.304	4783006	32.317 ug/ml
Spiked Amount	50.000	Recovery	= 64.63%
Target Compounds			
7) T n-Hexadecane (C16)	10.103	16869	0.104 ug/ml
14) T n-Tetracosane (C24)	15.159	54959	0.319 ug/ml
15) T n-Hexacosane (C26)	16.182	41148	0.242 ug/ml
16) T n-Octacosane (C28)	17.132	34612	0.206 ug/ml
17) T n-Tricontane (C30)	18.022	41961	0.257 ug/ml
18) T n-Dotriacontane (C32)	18.852	119382	0.698 ug/ml
19) T n-Tetratriacontane (C34)	19.642	30607	0.198 ug/ml
20) T n-Hexatriacontane (C36)	20.380	20447	0.141 ug/ml
21) T n-Octatriacontane (C38)	21.107	30013	0.218 ug/ml
22) T n-Tetracontane (C40)	21.992	19305	0.125 ug/ml

(f)=RT Delta > 1/2 Window

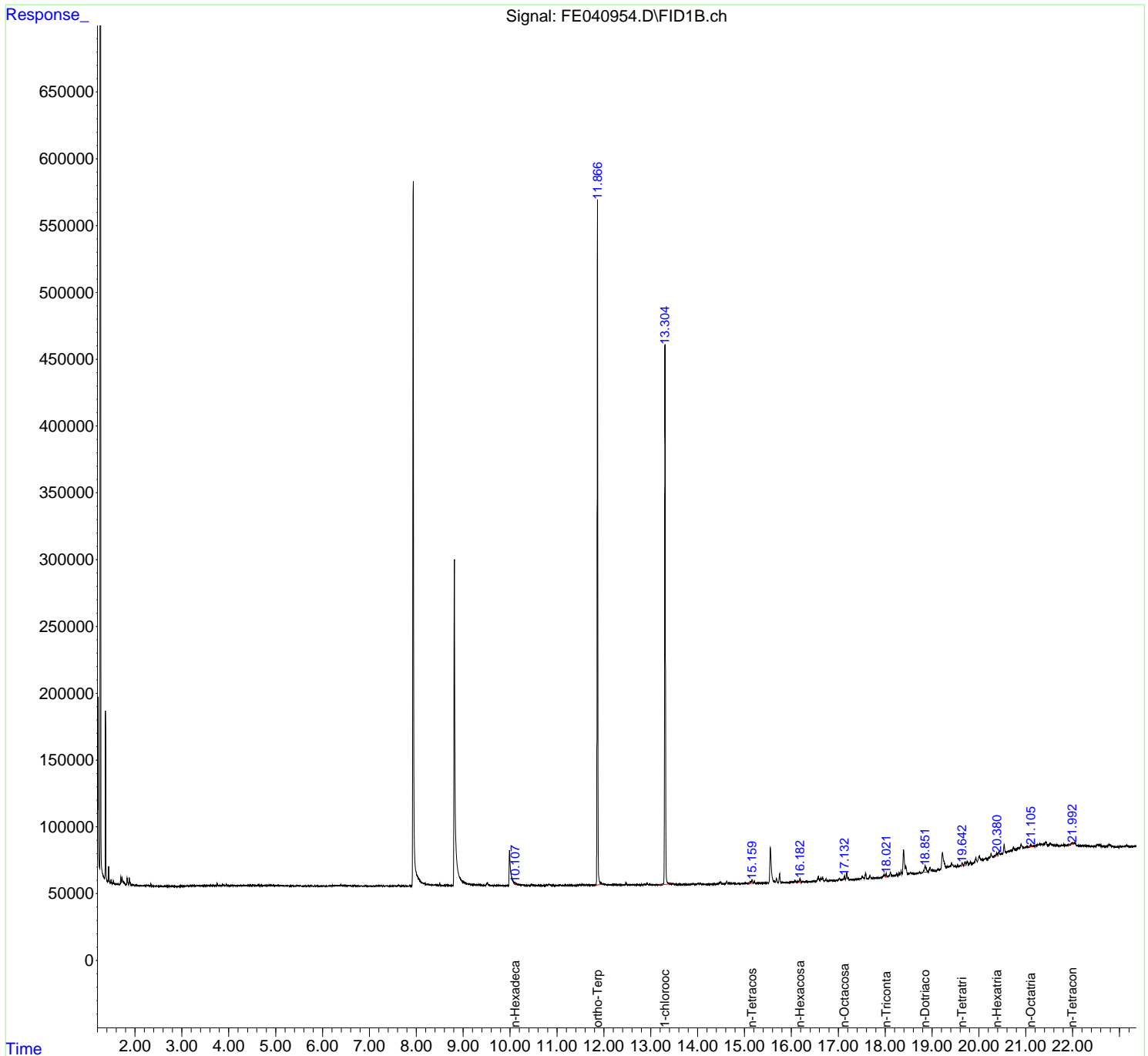
(m)=manual int.

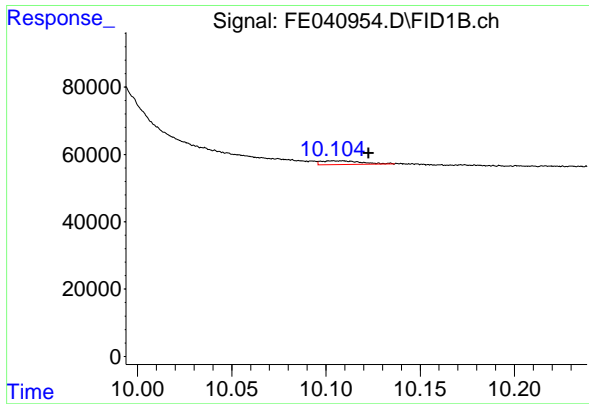
Data Path : Z:\pestpcbsrv\HPCHEM1\FID_E\Data\FE032223AL\
 Data File : FE040954.D
 Signal(s) : FID1B.ch
 Acq On : 22 Mar 2023 20:44
 Operator : YP\AJ
 Sample : 02020-34
 Misc :
 ALS Vial : 18 Sample Multiplier: 1

Instrument :
 FID_E
 ClientSampleId :

Integration File: autoint1.e
 Quant Time: Mar 23 00:14:35 2023
 Quant Method : Z:\pestpcbsrv\HPCHEM1\FID_E\methods\Aliphatic EPH 022823.M
 Quant Title : GC Extractables
 QLast Update : Tue Feb 28 03:05:09 2023
 Response via : Initial Calibration
 Integrator: ChemStation

Volume Inj. : 1 ul
 Signal Phase : Rxi-1ms
 Signal Info : 20M x 0.18mm x 0.18um

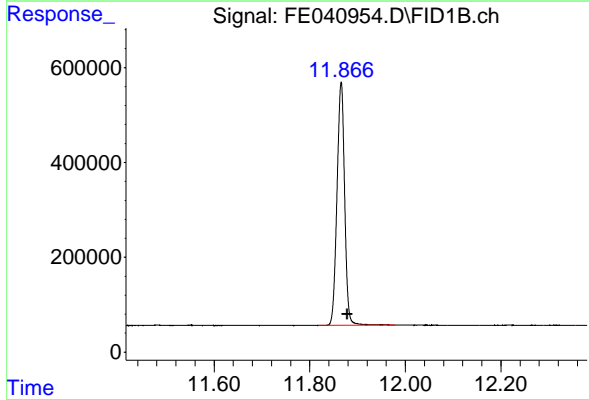




#7 n-Hexadecane (C16)

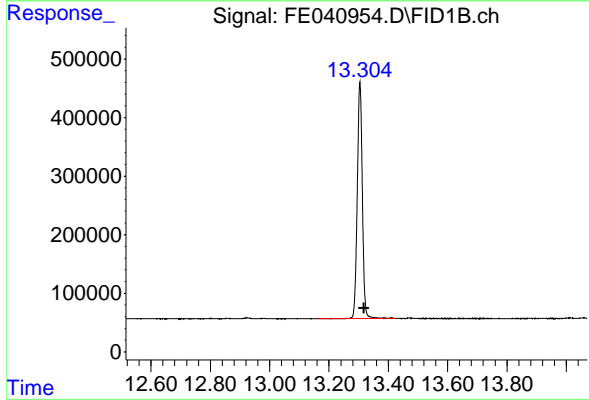
R.T.: 10.103 min
 Delta R.T.: -0.019 min
 Response: 16869
 Conc: 0.10 ug/ml

Instrument :
 FID_E
 ClientSampleId :



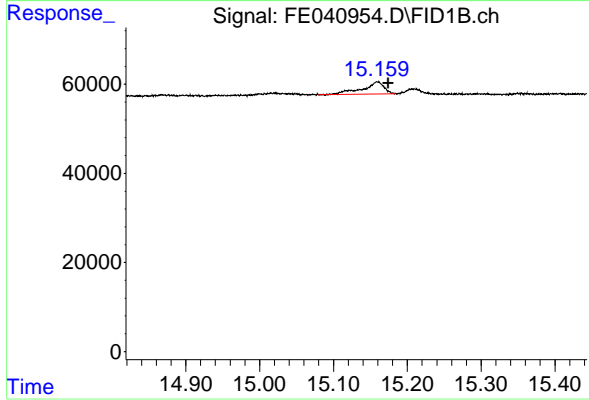
#9 ortho-Terphenyl (SURR)

R.T.: 11.866 min
 Delta R.T.: -0.013 min
 Response: 5673711
 Conc: 30.37 ug/ml



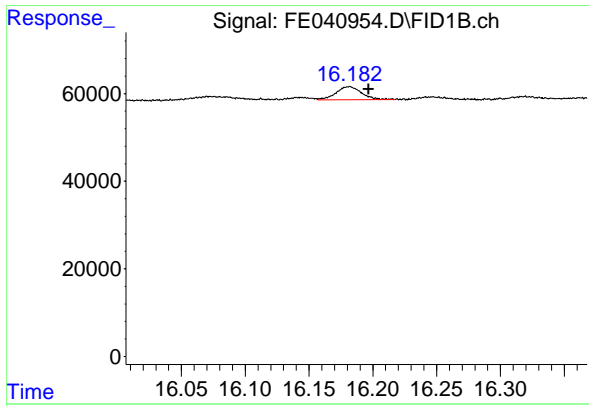
#12 1-chlorooctadecane (SURR)

R.T.: 13.304 min
 Delta R.T.: -0.014 min
 Response: 4783006
 Conc: 32.32 ug/ml



#14 n-Tetracosane (C24)

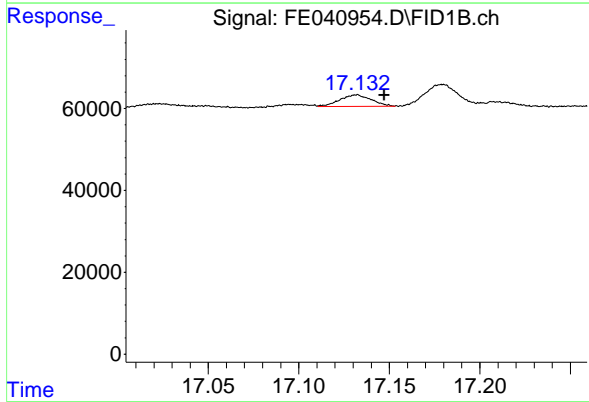
R.T.: 15.159 min
 Delta R.T.: -0.015 min
 Response: 54959
 Conc: 0.32 ug/ml



#15 n-Hexacosane (C26)

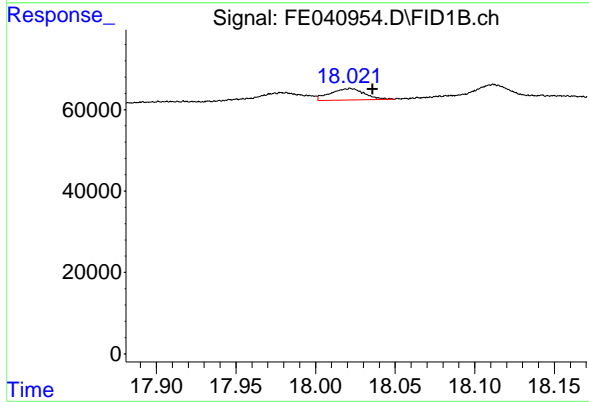
R.T.: 16.182 min
 Delta R.T.: -0.015 min
 Response: 41148
 Conc: 0.24 ug/ml

Instrument :
 FID_E
 ClientSampleId :



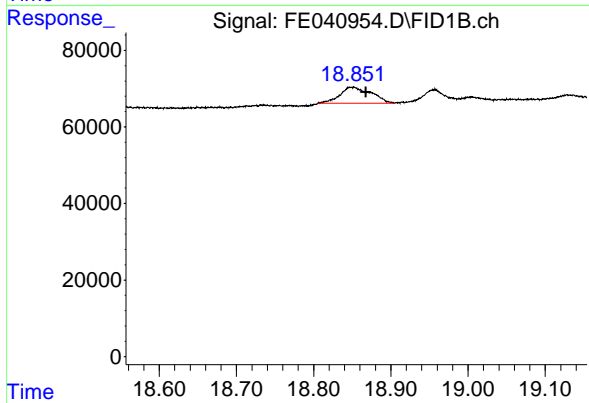
#16 n-Octacosane (C28)

R.T.: 17.132 min
 Delta R.T.: -0.015 min
 Response: 34612
 Conc: 0.21 ug/ml



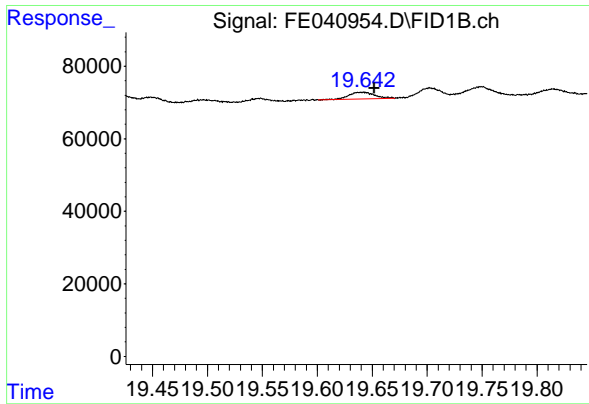
#17 n-Tricontane (C30)

R.T.: 18.022 min
 Delta R.T.: -0.014 min
 Response: 41961
 Conc: 0.26 ug/ml



#18 n-Dotriacontane (C32)

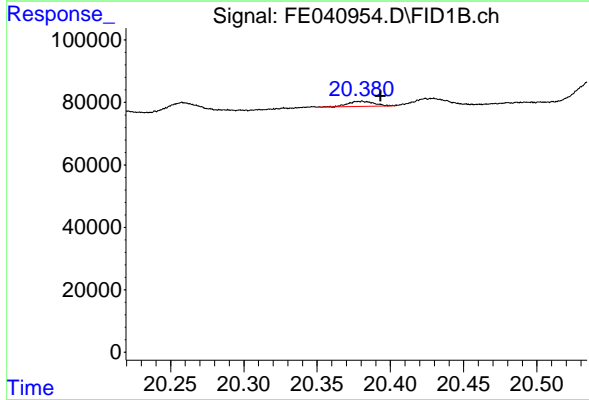
R.T.: 18.852 min
 Delta R.T.: -0.017 min
 Response: 119382
 Conc: 0.70 ug/ml



#19 n-Tetratriacontane (C34)

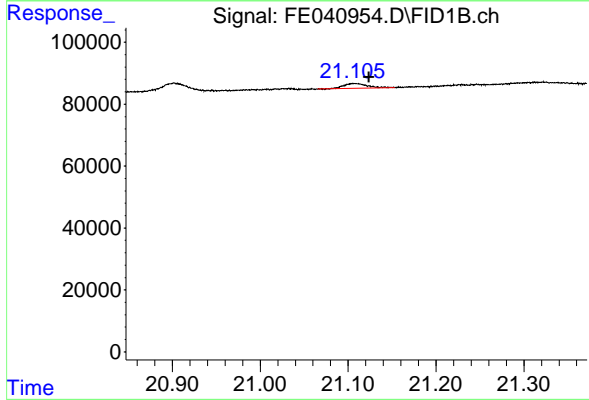
R.T.: 19.642 min
 Delta R.T.: -0.010 min
 Response: 30607
 Conc: 0.20 ug/ml

Instrument :
 FID_E
 ClientSampleId :



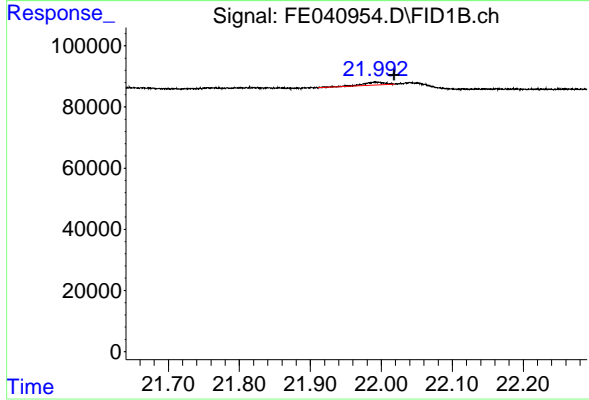
#20 n-Hexatriacontane (C36)

R.T.: 20.380 min
 Delta R.T.: -0.013 min
 Response: 20447
 Conc: 0.14 ug/ml



#21 n-Octatriacontane (C38)

R.T.: 21.107 min
 Delta R.T.: -0.016 min
 Response: 30013
 Conc: 0.22 ug/ml



#22 n-Tetracontane (C40)

R.T.: 21.992 min
 Delta R.T.: -0.027 min
 Response: 19305
 Conc: 0.12 ug/ml